

East Bay Plain Subbasin

**Sustainable Groundwater Management Act
(SGMA)**

Stakeholders Meeting

August 10, 2017

Agenda



- Introduction
- SGMA Overview
- Statutory Responsibilities of GSAs*
- Status Update
- Next Steps

* Groundwater Sustainability Agency

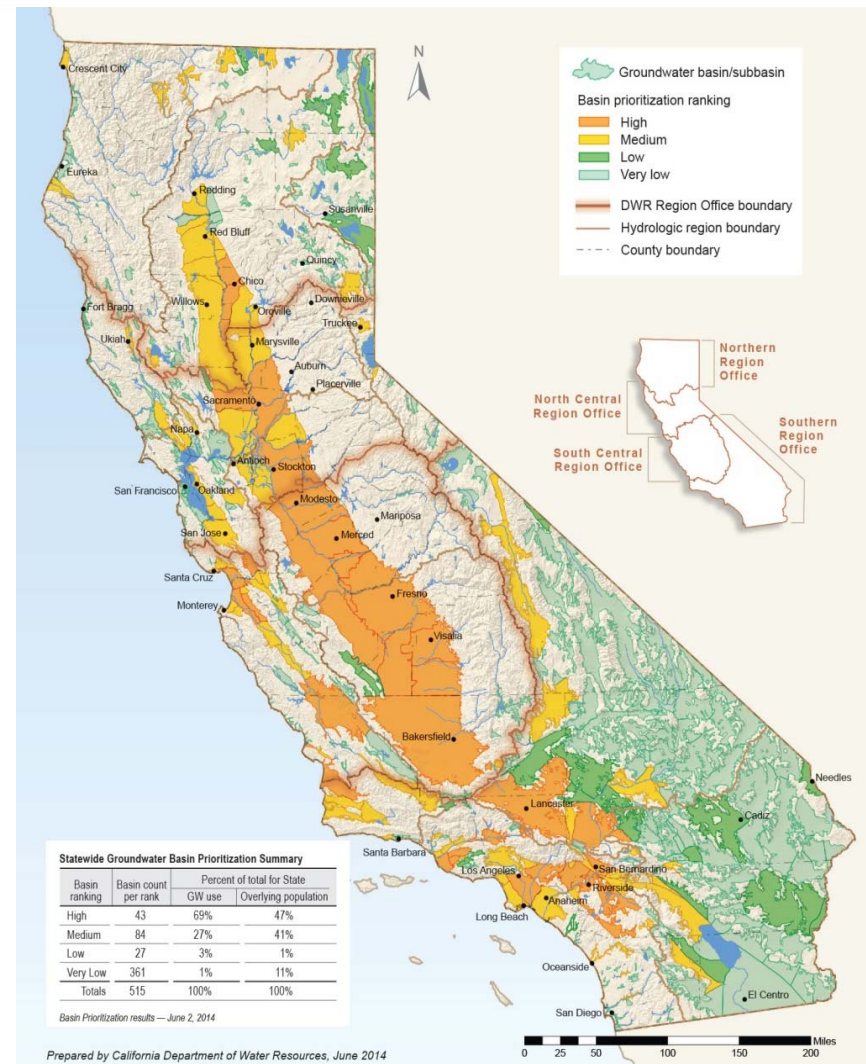
Introduction



- Requires Groundwater Sustainability Plans in 127 high- and medium-priority basins
- Authorizes management tools for local agencies
- Creates State “backstop”
- Defines time frame for accomplishing goals

BASIN RANKING	BASIN COUNT	PERCENT OF TOTAL	
		GW USE	POPULATION
High	43	69%	47%
Medium	84	27%	41%
Low	27	3%	1%
Very Low	361	1%	11%
Totals	515	100%	100%

Basin Prioritization Results – June 2, 2014









SGMA Overview



1. Provide the authority to manage groundwater basins
2. Require the state intervention when necessary
3. Define sustainable groundwater management
4. Require local agencies to develop plans and sustainably manage groundwater resources
5. Establish a timeline for implementation

SGMA Overview – Managing Undesirable Results



-  Chronic lowering of **groundwater levels** indicating a significant and unreasonable depletion of supply
-  Significant and unreasonable reduction of **groundwater storage**
-  Significant and unreasonable **seawater intrusion**
-  Significant and unreasonable degraded **water quality**
-  Significant and unreasonable **land subsidence**
-  Depletions of **interconnected surface water** that have significant and unreasonable adverse impacts on beneficial uses of the surface water

SGMA Roles and Responsibilities

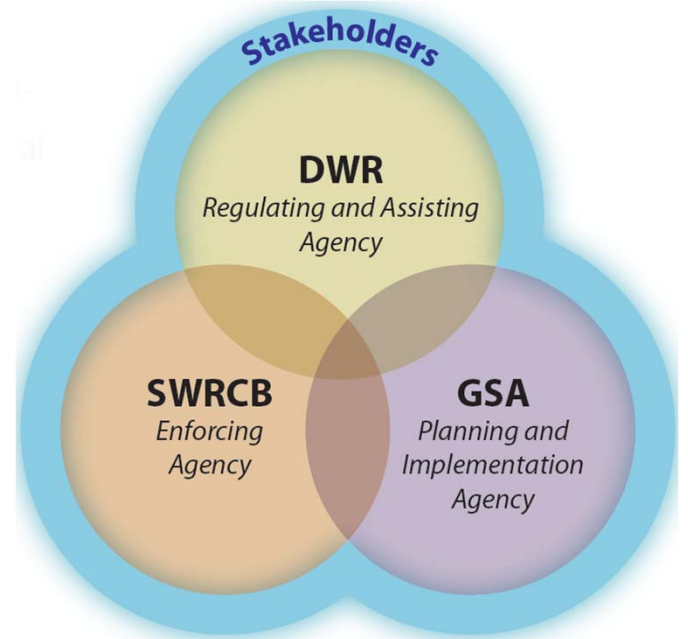


GSA - Planning and Implementing Agency

DWR - Regulating and Assisting Agency

SWRCB - Enforcing Agency

Other Stakeholders - Communication and Input

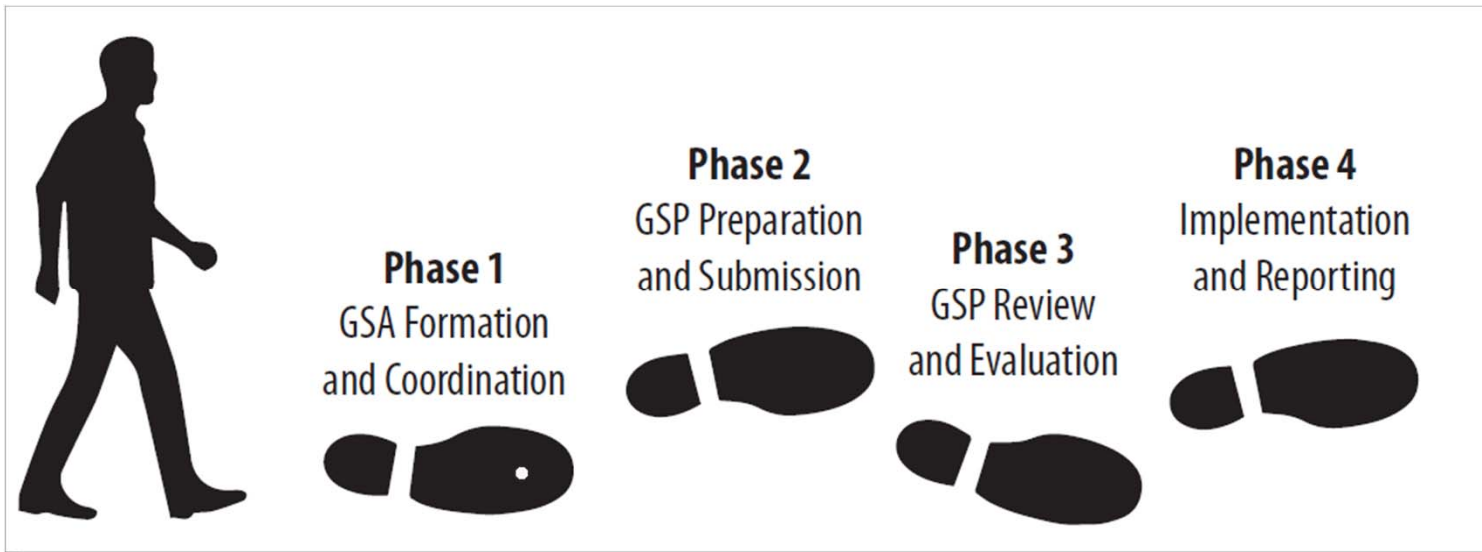


Noncompliance with SGMA



- State Intervention could happen if:
 1. GSAs covering the entire basin are not formed by 6/30/17, or
 2. There are no GSP(s) covering the entire basin by 1/31/22, or
 3. DWR and SWRCB determine a GSP is inadequate and a basin is in long-term overdraft anytime after 1/31/22.
- If state intervention occurs, groundwater extractors will need to file reports with SWRCB and pay the associated volumetric and per-well fees. EBMUD would only be subject to fees to the extent it extracts water from the subbasin
- No criminal penalties for SGMA noncompliance

SGMA Implementation Overview



Responsibilities of GSAs



As a GSA, EBMUD is required to:

- Develop a GSP in accordance with the GSP regulations by 1/31/22;
- Implement the approved GSP to meet the sustainability goals; and submit annual reports to DWR;
- Evaluate the GSP periodically to assess changing conditions and determine whether goals are being met; and modify the GSP as needed.

Financial Authorities as a GSA



To regulate, enforce and fund implementation of approved GSPs:

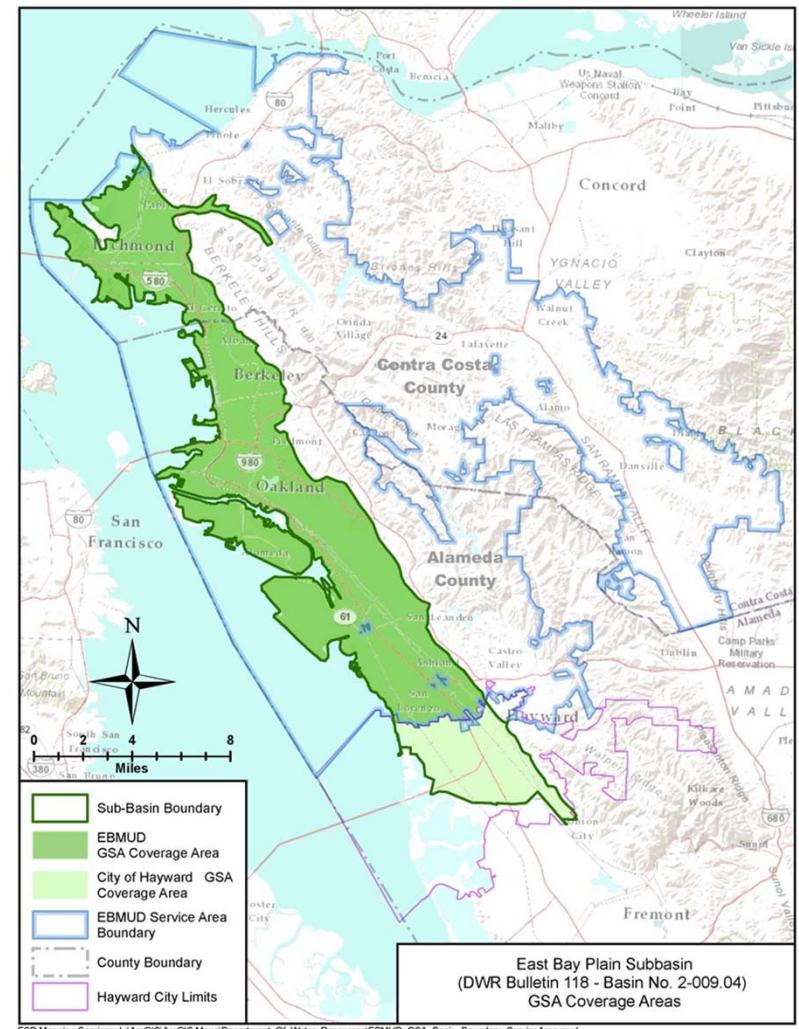
- A GSA can impose fees or taxes to fund the GSP implementation
- Alternatively, a GSA could collect the fees in the same manner as ordinary ad valorem taxes



Completed Milestones



- Board resolution to become a GSA on 8/9/16
- Submitted a GSA application on 8/15/16
- Became an exclusive GSA for a portion of the basin on 11/28/16 after the 90-day public comment period
- Hayward GSA approved on 6/6/17



Current Status



- Launching a dedicated SGMA webpage
- Preparing a Prop 1 Grant application package
- Developing a cooperating agreement with City of Hayward to prepare a single GSP and jointly implement SGMA
- Coordinating with stakeholders
- Developing a work plan for GSP development



WWW.EBMUD.COM/SGMA



[CONTACT US](#) [JOBS](#) [BUSINESS CENTER](#) [SITE MAP](#) [STORE](#)

[Home](#) [Customers](#) [Water](#) [Wastewater](#) [Recreation](#) [About us](#)

Sustainable Groundwater Management

[Home](#) / [Water](#) / [About your water](#) / [Water supply](#) / [Sustainable Groundwater Management](#)

The groundwater beneath the East Bay is an important local resource and EBMUD is stepping up to act as its steward. Many Californians rely daily on their underground aquifers. Here in the EBMUD service area, residents drink water from Pardee Reservoir in the Sierra foothills and from local surface reservoirs. While we don't regularly use our groundwater resource, EBMUD is still taking on the responsibility to manage it for supplemental supply and to preserve it for future generations.

[Urban Water Management Plan](#)

[Water Supply Management Program 2040](#)

[Mokelumne/Amador/Calaveras Integrated Regional Water Management Plan](#)

[EBMUD and the Delta](#)

[Water Right Permit 10478 Time Extension Project](#)

[The State Water Resources Control Board Delta Flow Criteria](#)

[Water supply reports](#)

Next Steps



- Complete the cooperating agreement
- Finalize funding mechanisms for GSP development
- Start GSP development
- Continue stakeholder communication and engagement process



Preliminary Schedule



- Grant Application (Summer 2017)
- MOU with City of Hayward (Fall 2017)
- Consultant Solicitation and Contract Award (Spring 2018)
- Groundwater Modeling (2018-2019)
- GSP Development (2018-2020)
- GSP Implementation (2021)

How can you participate?



- Send support letters for grant funding application
- Get on the mailing list
- Engage in SGMA Stakeholders outreach
- Communicate and provide inputs in GSP development process

Support Letters



Ms. Heather Shannon

Department of Water Resources

Division of Integrated Regional Water Management

901 P Street

P.O. Box 942836

Sacramento, CA 94236-0001

Re: EBMUD's Sustainable Groundwater Planning Grant Proposal

Q & A

For additional information

Ken Minn

510-287-0668

Ken.minn@ebmud.com