



Water Supply Update

Board of Directors

February 11, 2025

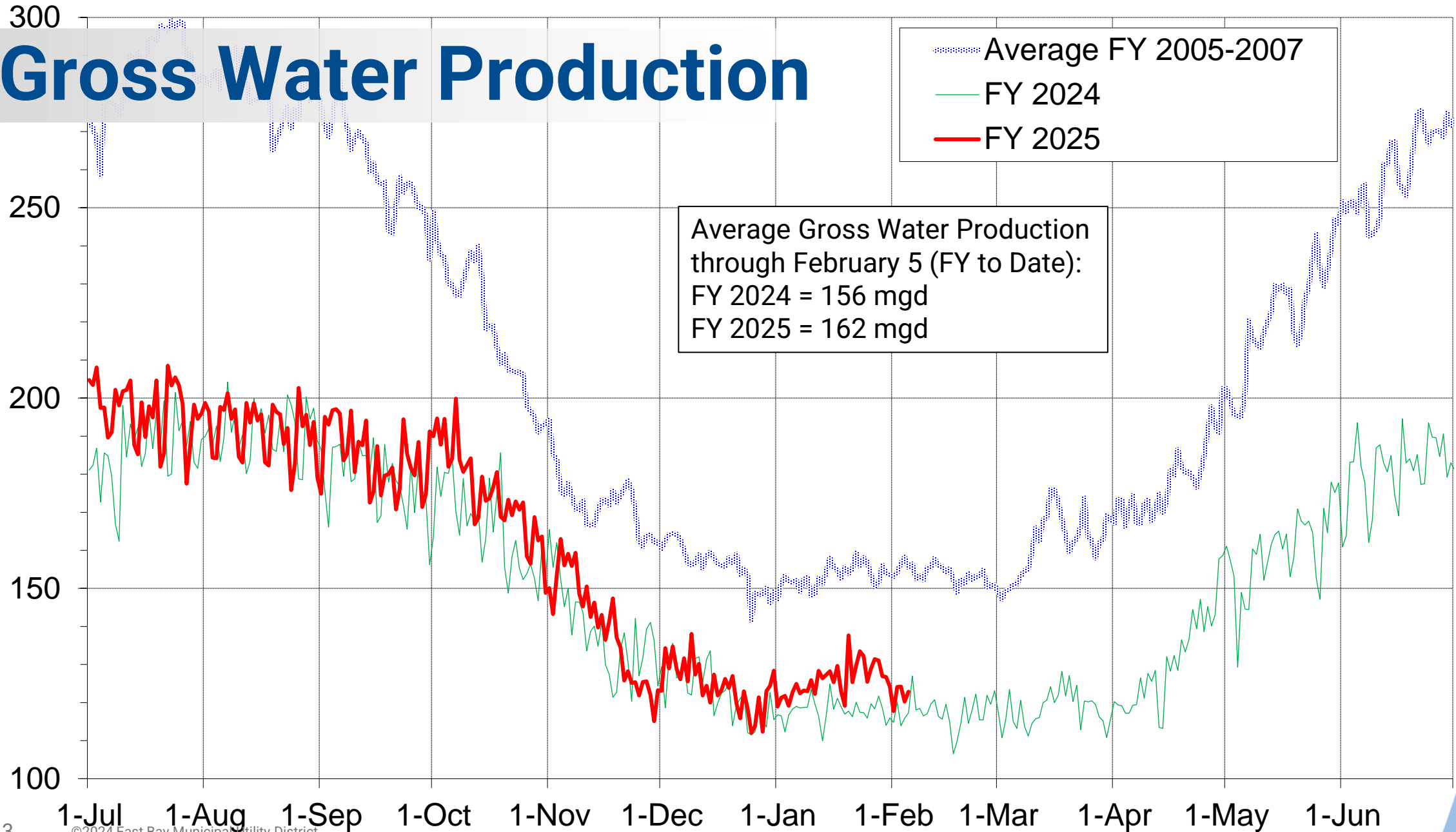
Roberto C. Cortez, Manager of Water Operations

Current Water Supply

A blue-tinted photograph of a river flowing over rocks, with dense trees in the background. The river is in the foreground, with many rocks visible beneath the water. The background is filled with a dense forest of trees.

Gross Water Production

Gross Water Production (mgd)



Reservoir Storage

As of 2/5/2025	Current Storage	Percent of Average	Percent of Capacity
Pardee	177,660 AF	99%	87%
Camanche	302,160 AF	115%	72%
East Bay	127,730 AF	100%	85%
Total System	607,550 AF	107%	79%

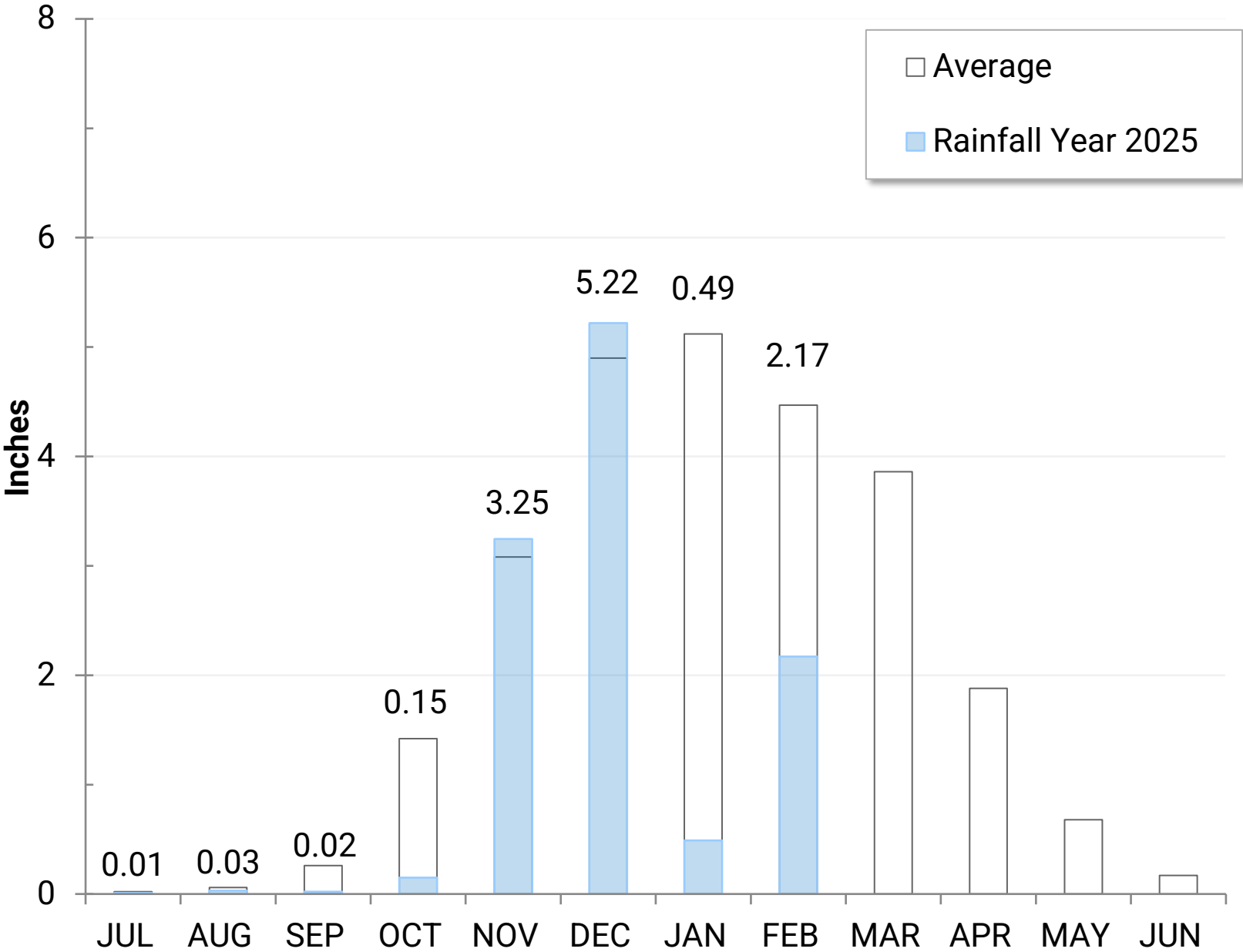
AF: Acre-Feet

Precipitation as of February 5

East Bay: 11.3”
(70% of average)

Weather Station Details

- USL WTP
- Lafayette Reservoir
- Data collected since 1953

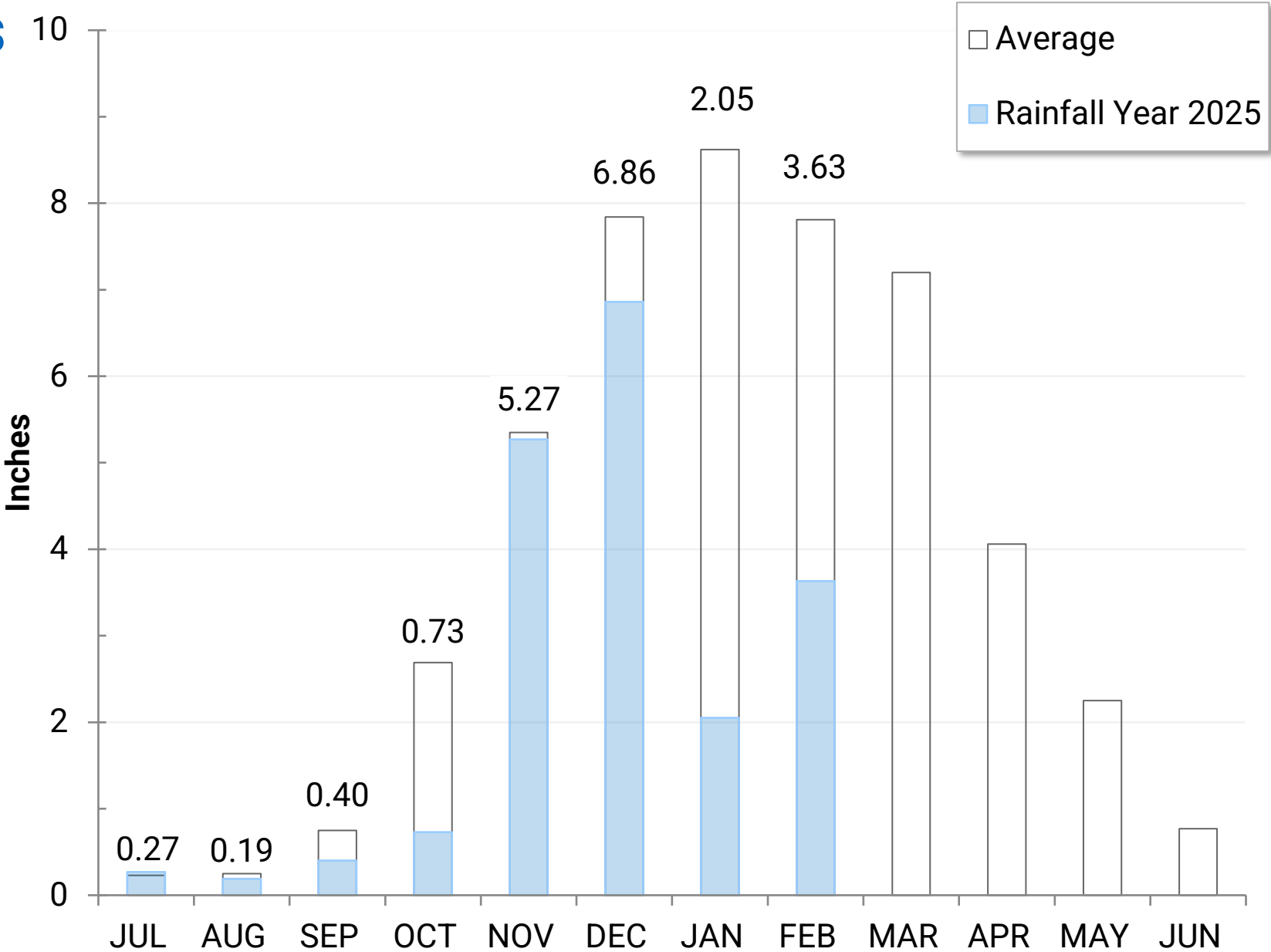


Precipitation as of February 5

Mokelumne: 19.2”
(70% of average)

Weather Station Details

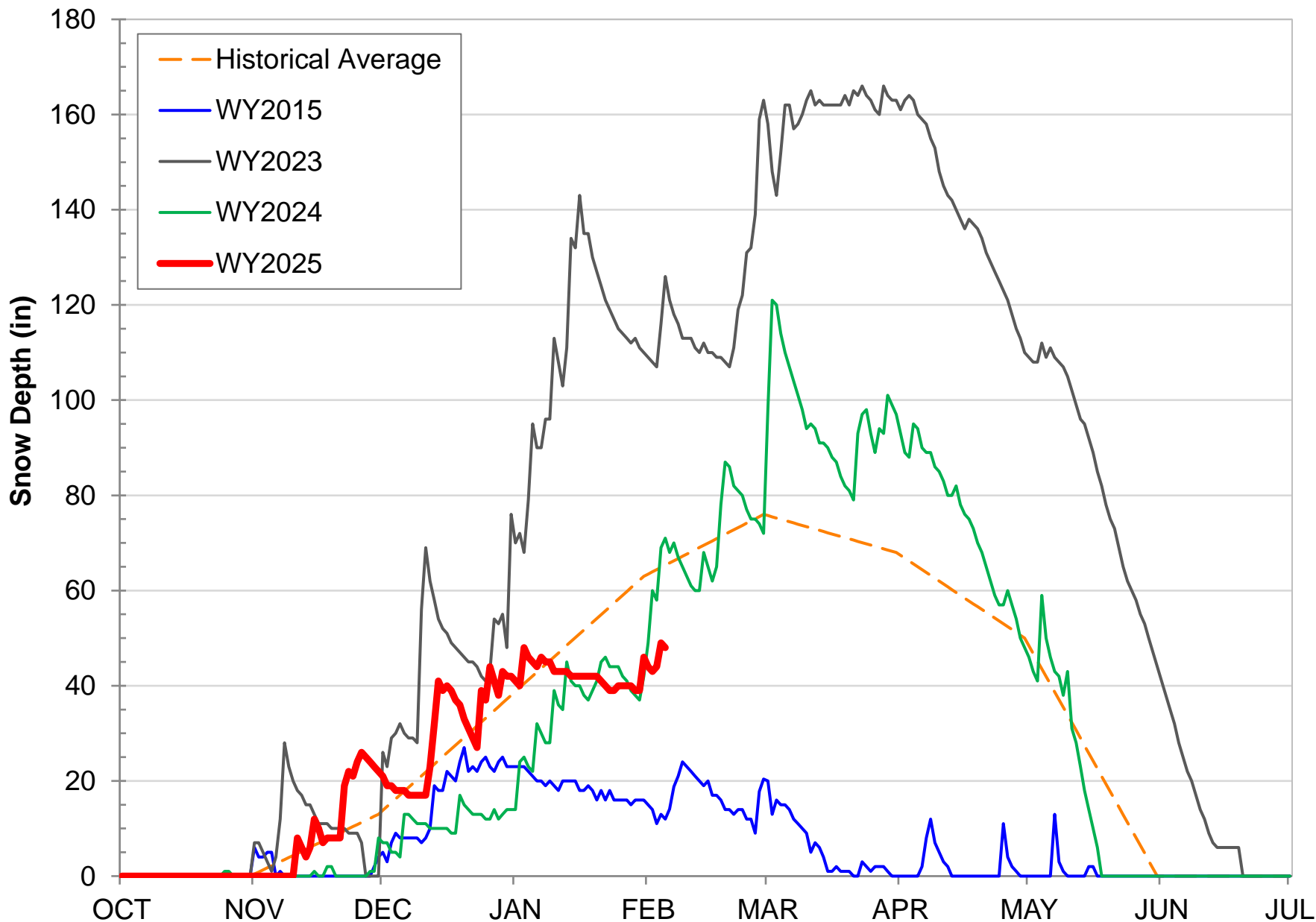
- Big Trees
- Caples Lake
- Salt Spring Reservoir
- Tiger Creek Power Station
- Data collected since 1930



Caples Lake Snow as of February 5

Snow Depth – 48”
(73% of average)

Snow Water
Content – 13.4”
(62% of average)





Caples Station, J. Toone 2024

Snowpack as of February 6

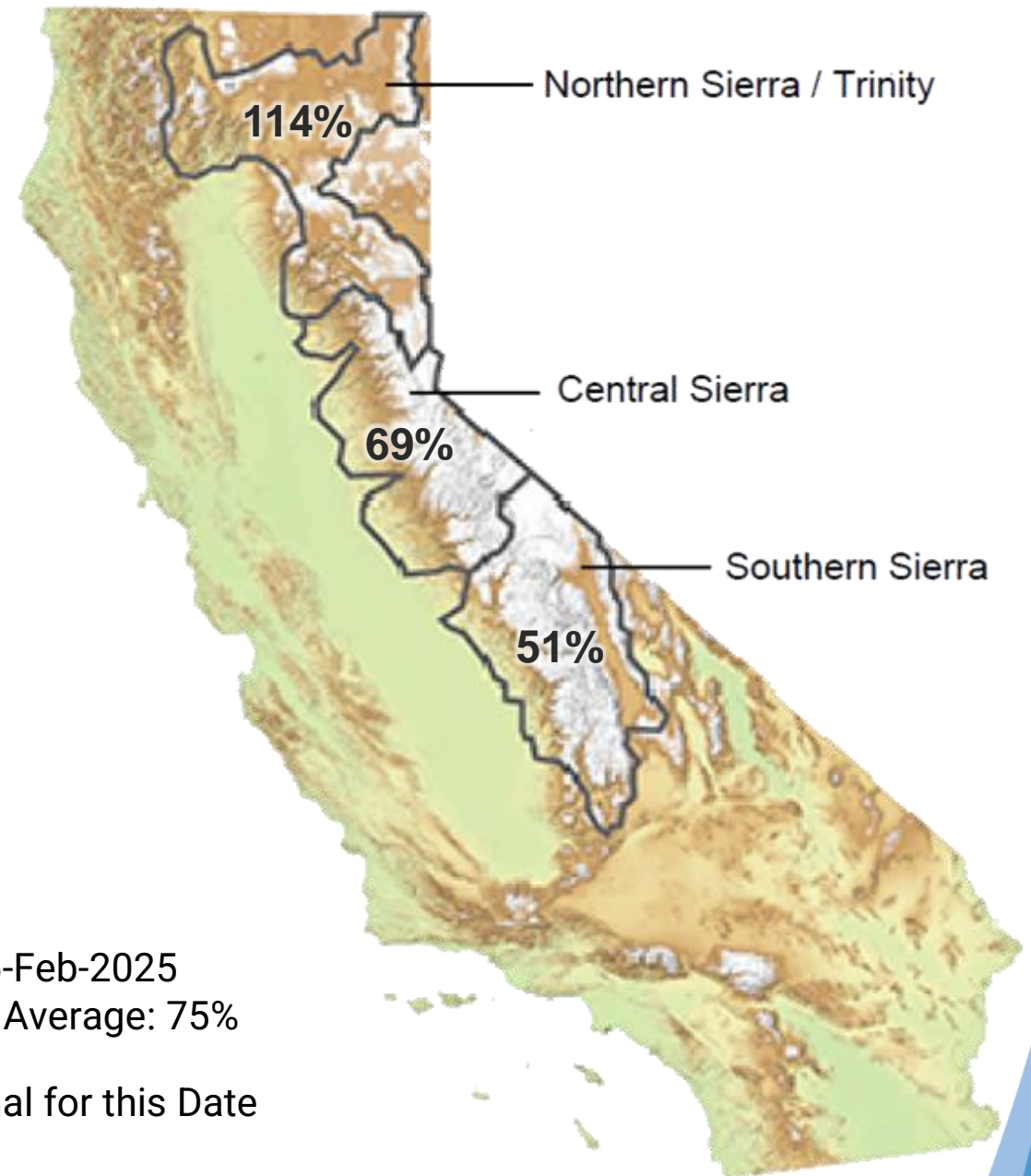
Snow Water Equivalent:

69% of Normal in Central Sierra



Data for: 6-Feb-2025
Statewide Average: 75%

% of Normal for this Date



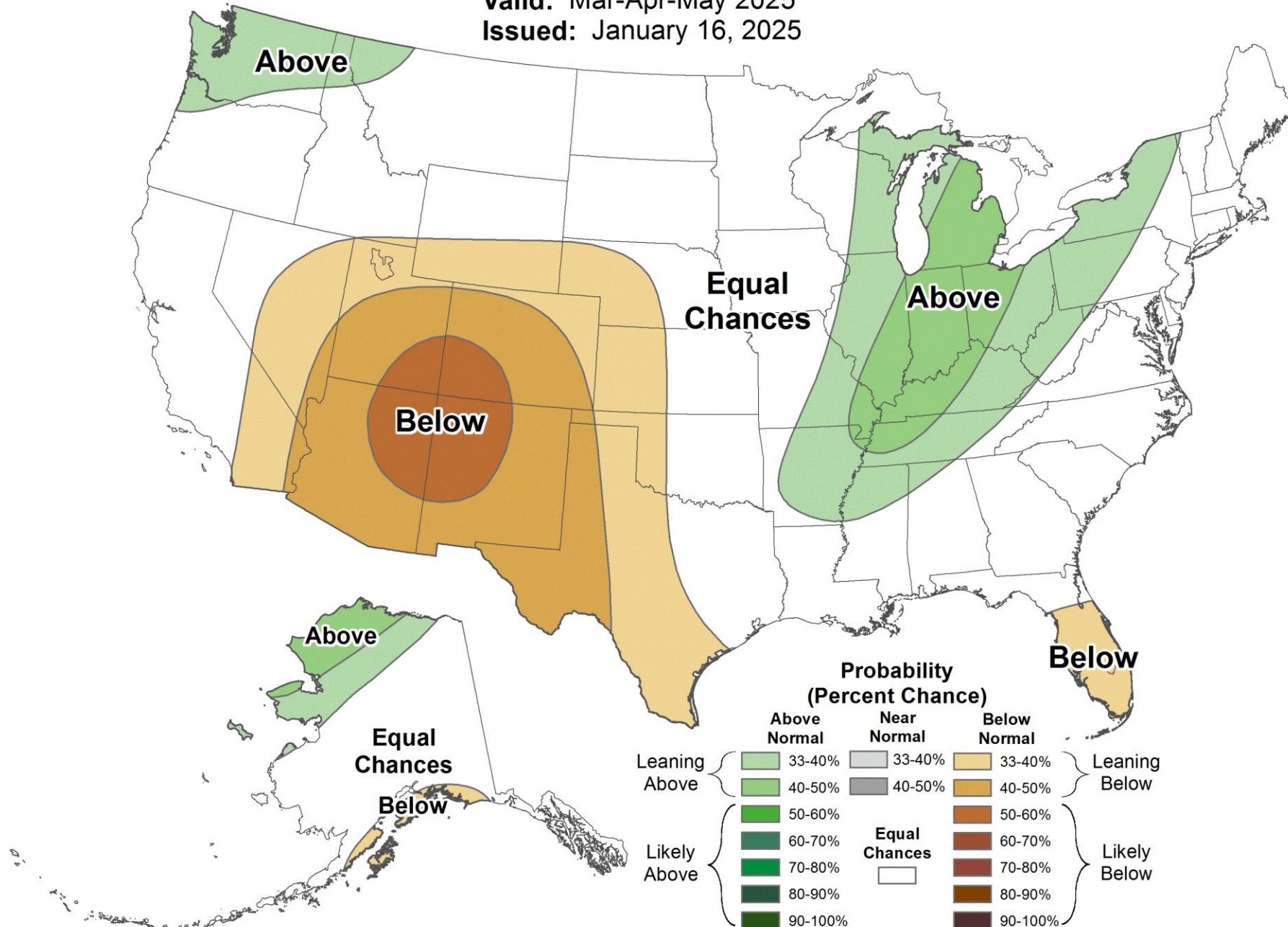
Water Supply Projections



Seasonal Precipitation Outlook

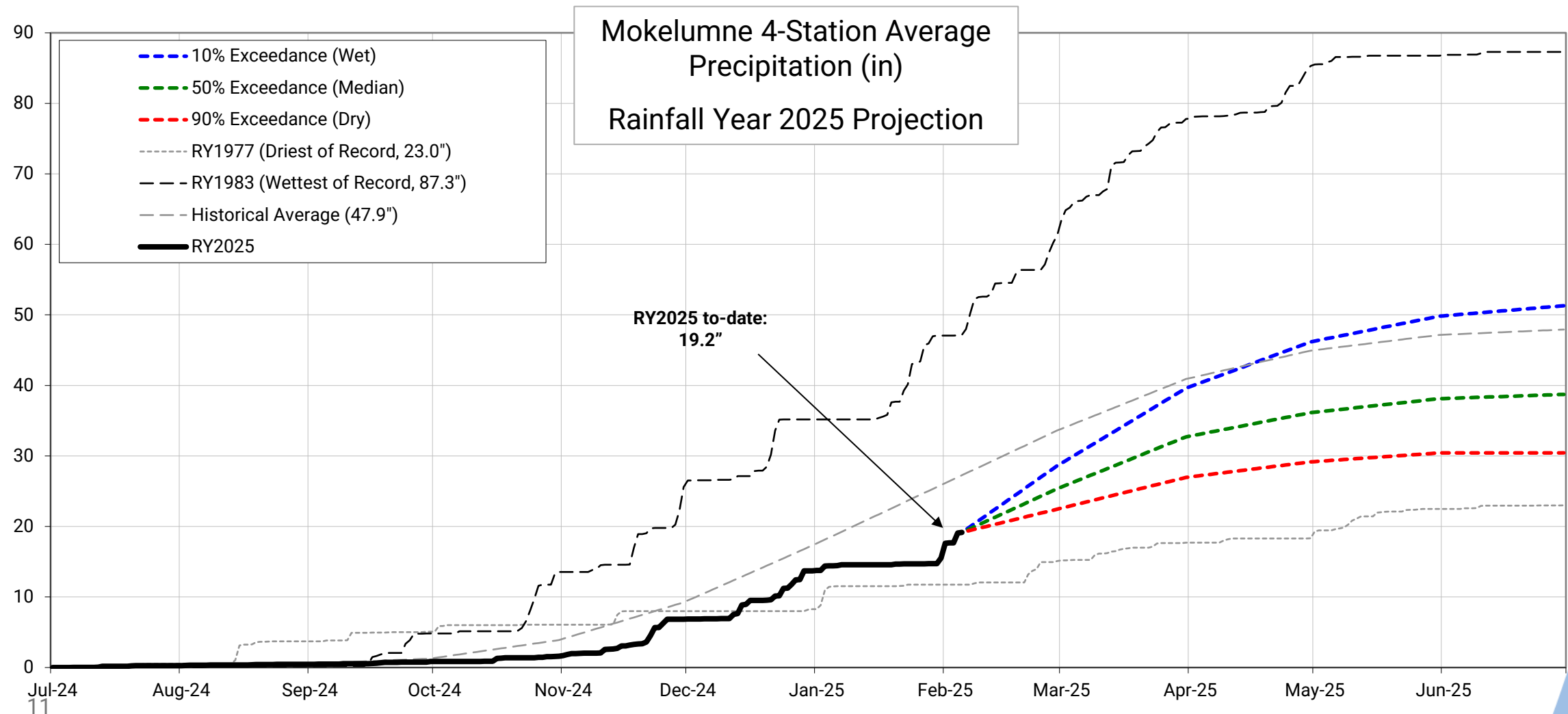


Valid: Mar-Apr-May 2025
Issued: January 16, 2025



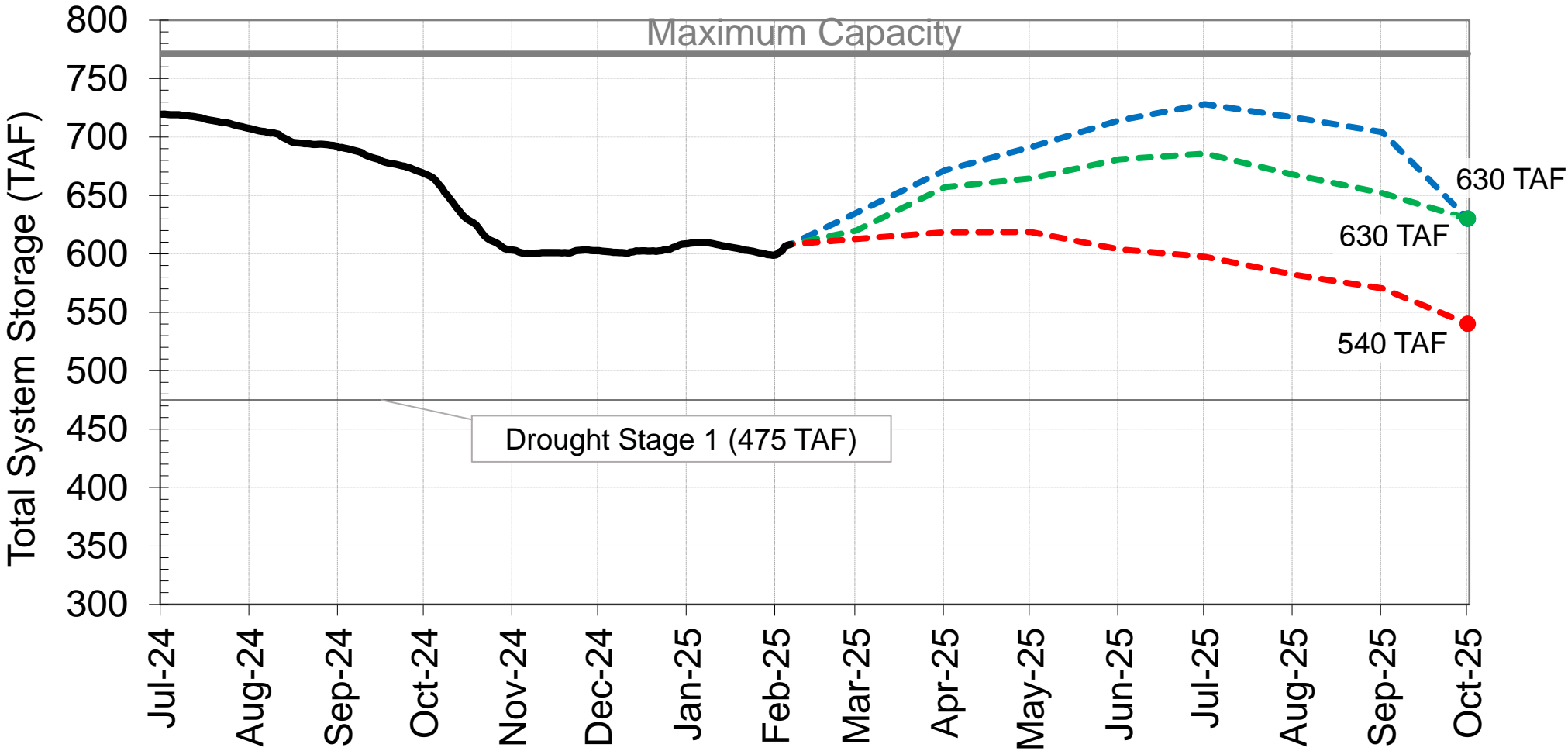
Projected Precipitation

Mokelumne Precipitation Rainfall Year 2025



End of Season Storage

2025 Total System Storage Projections





1-17
24412

Questions?

