



Water Supply Update

Board of Directors

April 11, 2023



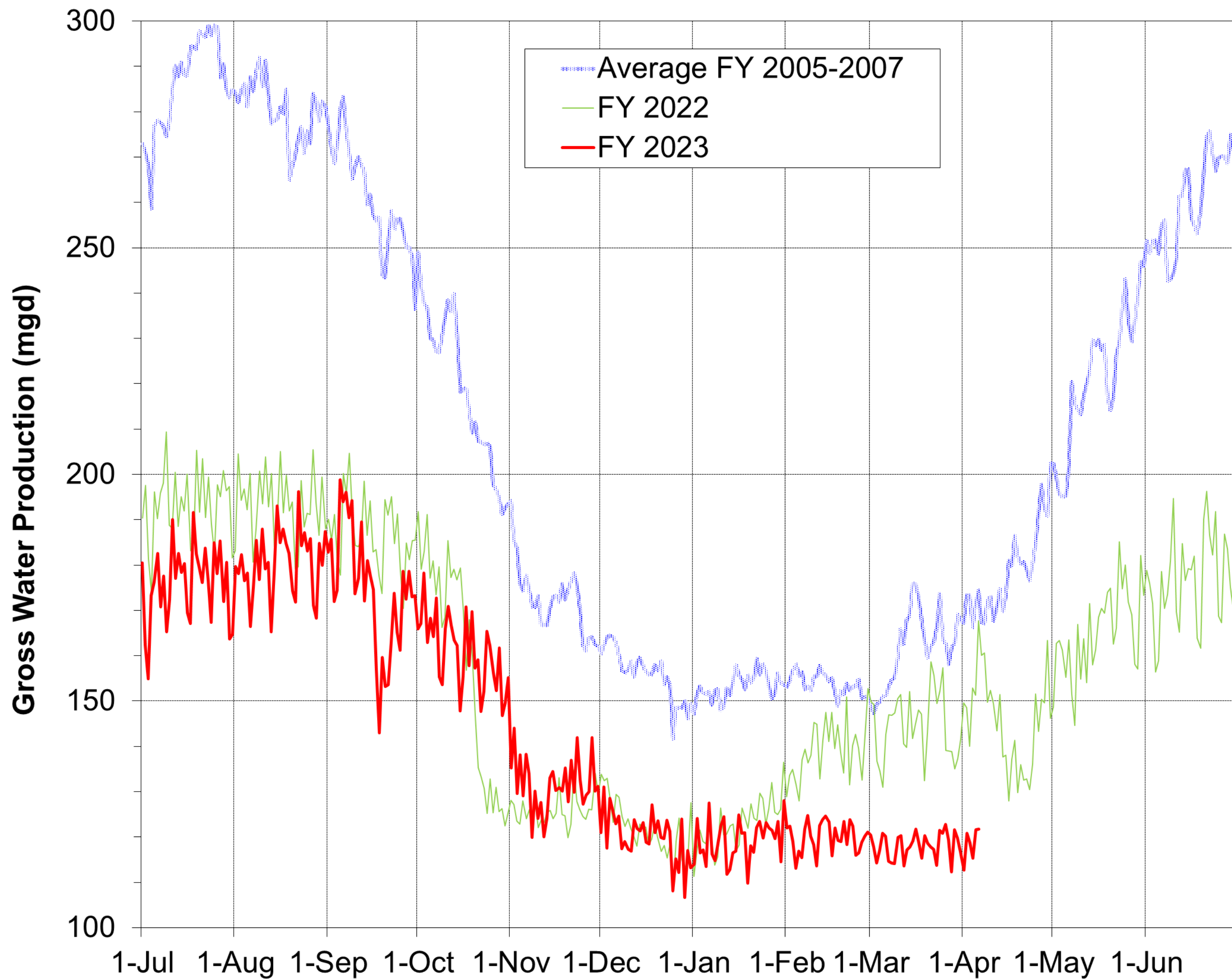
Water Supply Briefing

- Current Water Supply
- California Water Supply
- Water Supply Projections

Current Water Supply

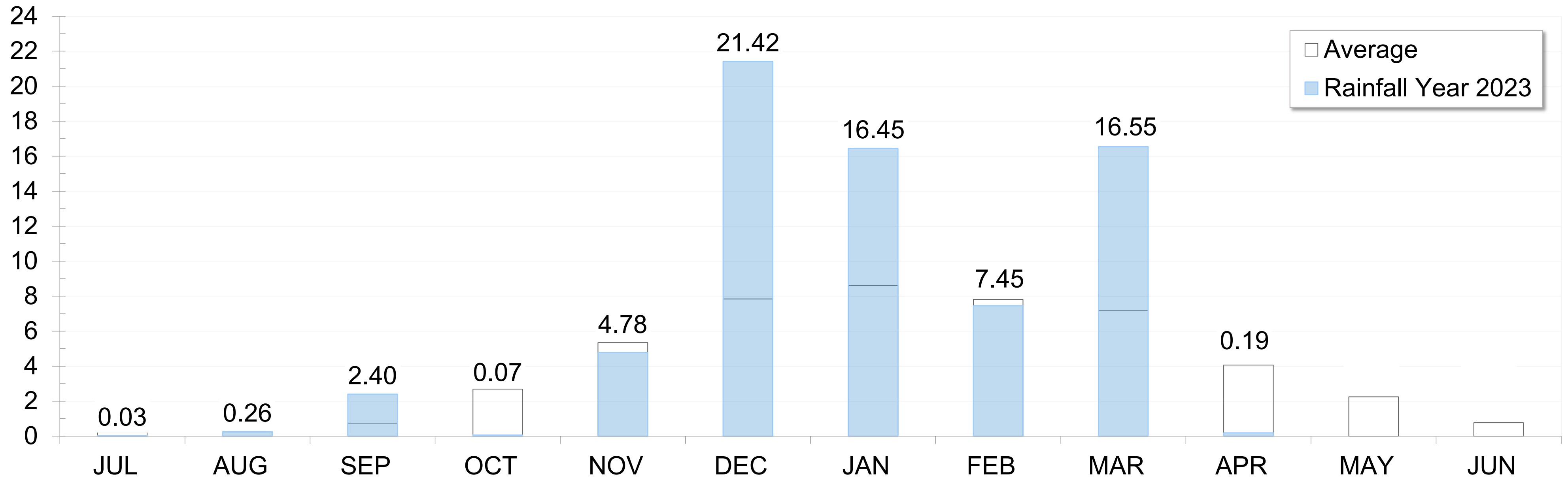


Gross Water Production



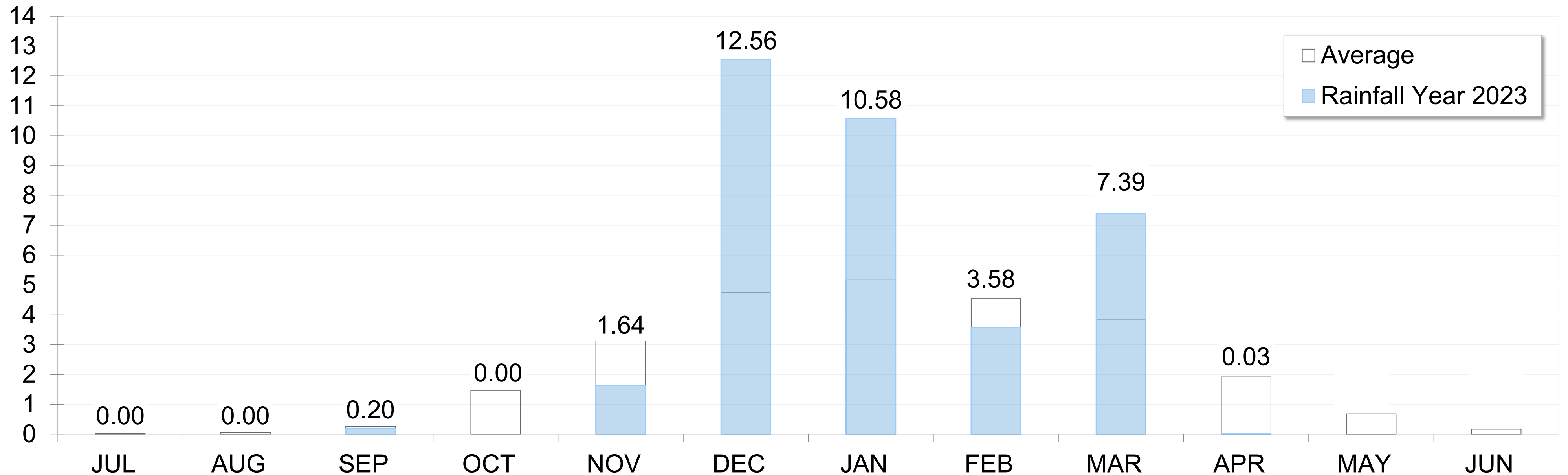
Mokelumne Precipitation

Through April 6: 69.60" (166% of Average)

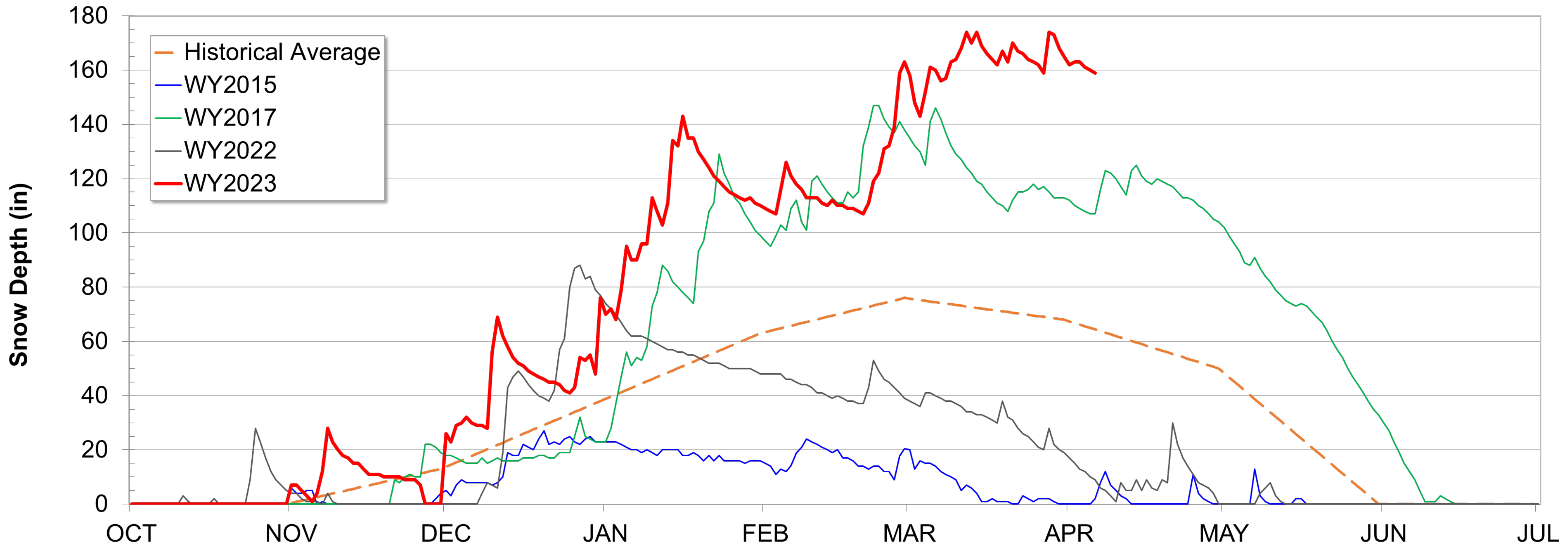


East Bay Precipitation

Through April 6: 35.98" (148% of average)



Caples Lake Snow Depth



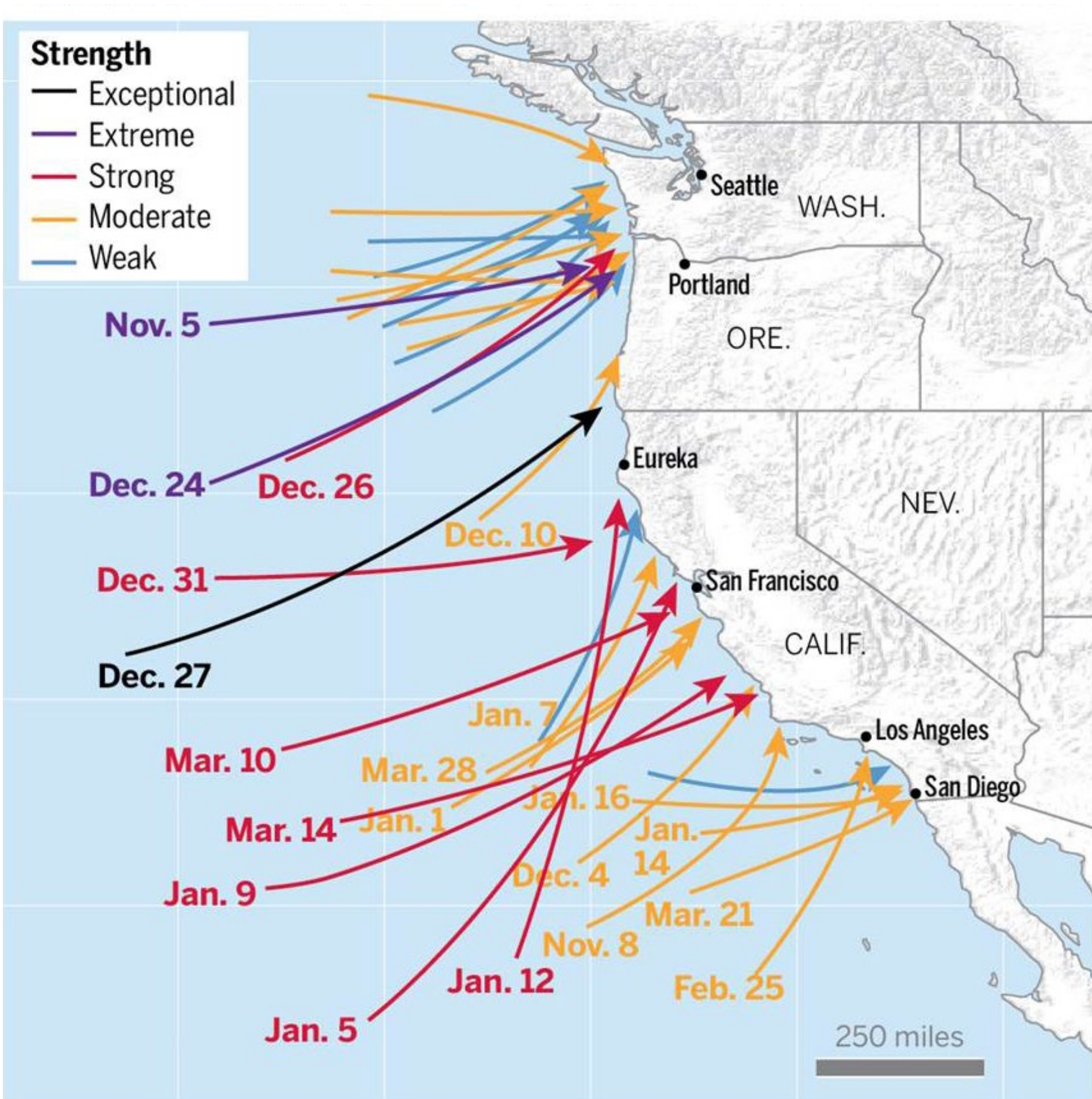
Reservoir Storage

As of 4/6/2023	Current Storage	Percent of Average	Percent of Capacity
Pardee	205,090 AF	109%	101%
Camanche	290,070 AF	96%	70%
East Bay	148,890 AF	107%	99%
Total System	644,050 AF	103%	84%

Pardee Reservoir Sluice – C. Potter, March 2023

California Water Supply



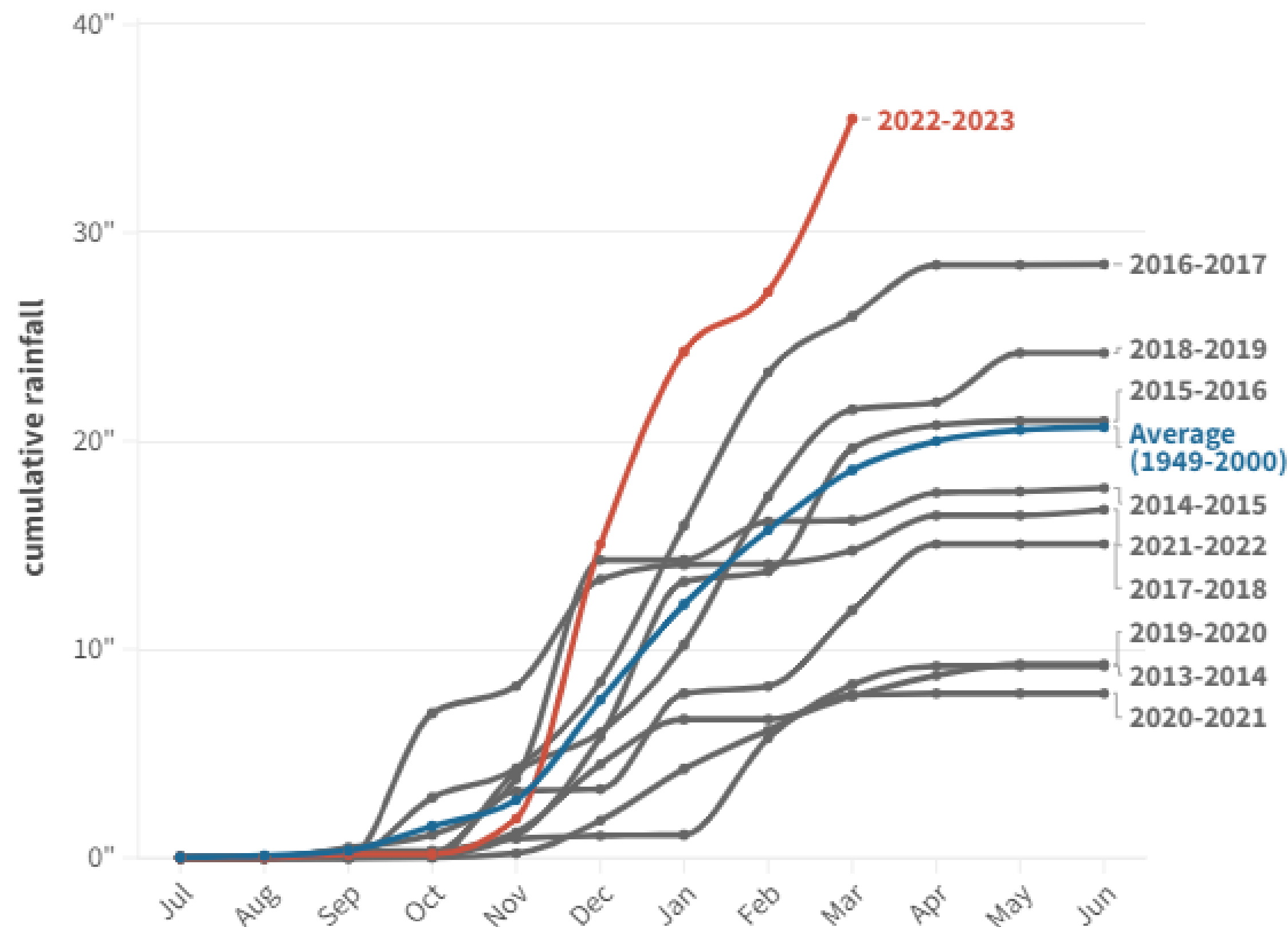


Atmospheric Rivers

Since October, more than 30 atmospheric river storms have impacted California, including six that were strong and one considered exceptional.

Oakland Rainfall Totals

Chart values shown are end-of-month cumulative totals



Source: NOAA's National Center for Environmental Information • *Average calculated using monthly totals from 1949-1950 through 1999-2000. The rain year starts July 1, and data is through March 31, 2023.

By: Harriet Blair Rowan - Bay Area News Group

California Water Supply

Snow Water Content Percent of Normal for this Date				
Date	North	Central	South	State
1/1/23	139	187	209	179
2/1/23	171	203	249	205
3/1/23	153	198	232	194
4/1/23	192	236	293	237
4/6/23	200	242	305	244



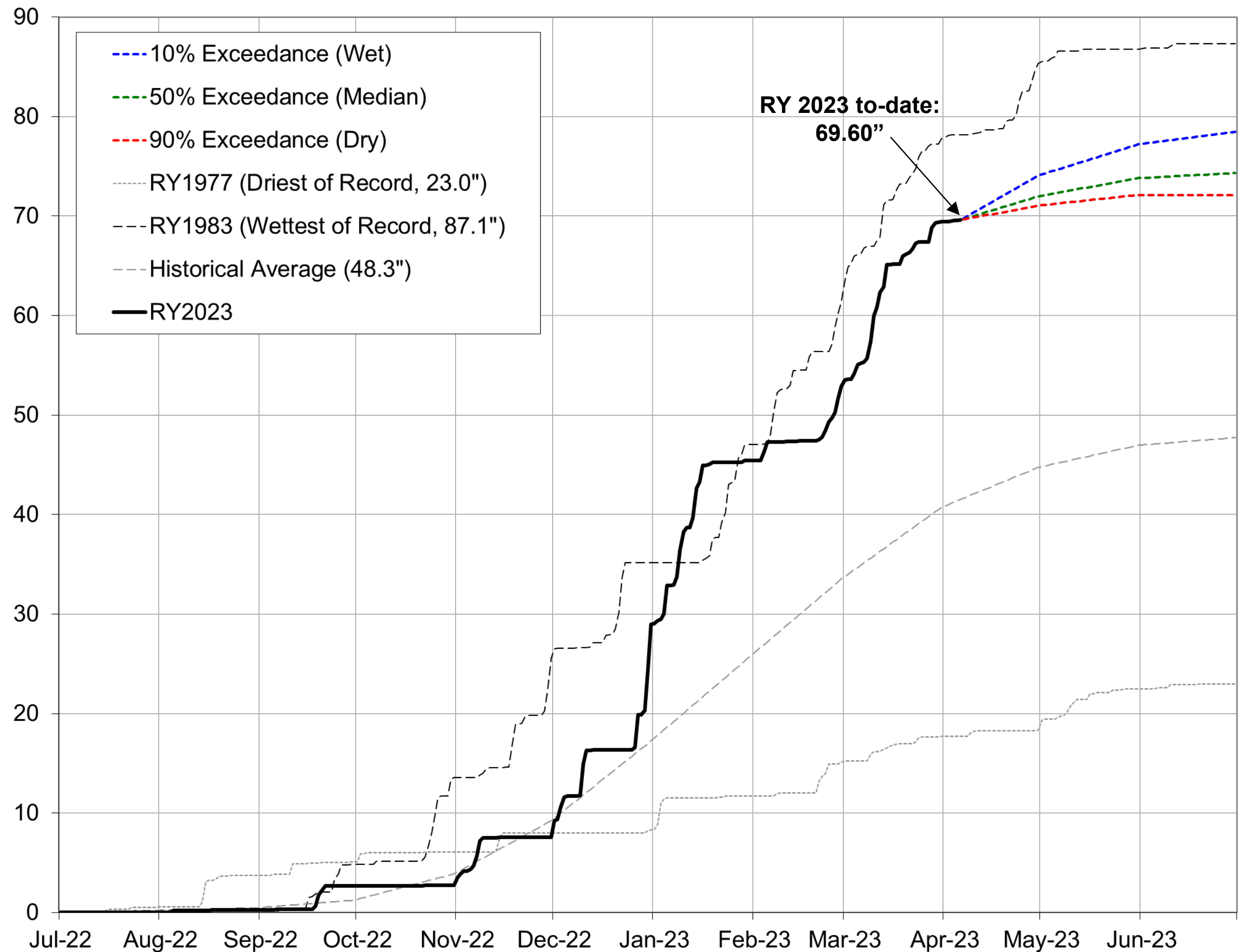
Water Supply Projections



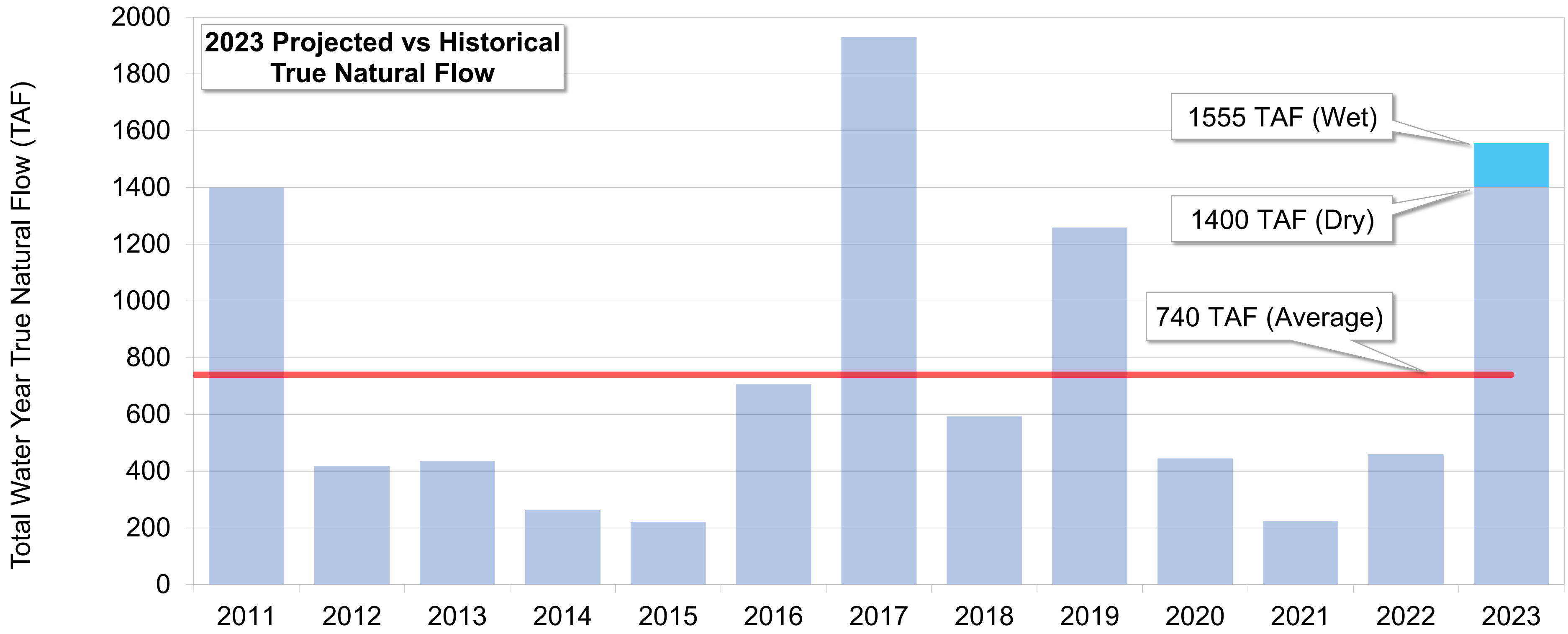
Precipitation Projections

Wet, Median and Dry Scenarios

Mokelumne 4-Station Average Precipitation (in)
Rainfall Year 2023 Projection



Projected 2023 EBMUD Unimpaired Runoff



Questions?



Camanche Reservoir Release – March 2023



WATER SUPPLY ENGINEERING DAILY REPORT

Thursday, April 6, 2023

RESERVOIR STORAGE AND ELEVATION

	<u>WATER SURFACE</u>		<u>STORAGE</u>		<u>MAXIMUM CAPACITY</u>		Release	Spill
	Elevation	+Gain		+Gain	Elevation	Storage		
<u>MOKELUMNE</u>	<u>Feet</u>	<u>-Loss</u>	<u>Ac-Ft</u>	<u>-Loss</u>	<u>Feet</u>	<u>Ac-Ft</u>	<u>Cfs</u>	<u>Cfs</u>
Pardee	568.22	0.01	205090	20	567.65	203795	2242	917
Camanche	217.08	-0.6	290070	-3790	235.5	417120	4003	0
<u>EAST BAY</u>								
Briones	576.37	0	59120	0	576.14	58960	0	20
Chabot	227.84	-0.1	10550	-40	227.25	10350	0	41
Lafayette	437.63	0	2900	0	449.16	4250	0	0
San Pablo	312.76	-0.32	37150	-270	313.68	37915	150	0
Upper San Leandro	460.32	-0.07	<u>39170</u>	<u>-50</u>	459.98	<u>38905</u>	0	40
<u>Total East Bay Res.</u>			<u>148890</u>	<u>-360</u>		<u>150380</u>		
TOTAL SYSTEM STORAGE			644050	-4130		771295		

DISTRIBUTION SYSTEM				MOKELUMNE SYSTEM			
<u>DISTRIBUTION RESERVOIRS</u>				<u>AQUEDUCT DELIVERIES</u>			
	<u>Storage</u>	<u>Operating</u>			<u>MG</u>	<u>Flow Conditions</u>	
	<u>MG</u>	<u>Capacity</u>		Line 1	39.3	GRAVITY	
Today	333	720		Line 2	5.3	SHUTDOWN	
Total Previous Day	<u>344</u>			Line 3	<u>39.9</u>	<u>THROTTLE</u>	
Total Change	-11			TOTAL	84.5	131 Cfs	
				<u>FSCC to MOK AQUEDUCTS (Measured at Brandt), MG</u>			
<u>WATER PRODUCTION</u>	Million	Capacity		Mok 1	0		
<u>AND DEMAND</u>	<u>Gallons</u>	<u>MGD</u>		Mok 2	<u>0</u>		
Lafayette WTP	0	25			0 MG		
Orinda WTP	55	190		<u>RIVER FLOWS AND RELEASES</u>			
San Pablo WTP	0	30				<u>Cfs</u>	
Sobrante WTP	15.6	50		Mokelumne River Natural Flow		1740	
Upper San Leandro WTP	22.2	45		Pardee Reservoir Inflow		2392	
Walnut Creek WTP	19.7	90		Pardee Release to Camanche Res.		2242	
<u>TOTAL SURFACE PRODUCTION</u>	112.5	430		Pardee Release to JVID		0	
Miscellaneous(Estimated)	0.4			Camanche Release to Mokel. River		4003	
<u>TOTAL WATER PRODUCTION</u>	<u>112.9</u>			<u>PG&E CO. STORAGE (Acre-feet)</u>			
Change in Distribution System	-11				<u>Storage</u>	<u>Change</u>	<u>Maximum</u>
Wash Water from Distribution Sys.	1.9			Old Reservoirs	11088	-23	26560
<u>SYSTEM DEMAND</u>	121.7			Salt Springs Res.	34459	-840	141857
East-of-Hills Demand	23.8			Lower Bear Res.	<u>23514</u>	<u>-430</u>	<u>52025</u>
West-of-Hills Demand	97.9			Total	69061	-1293	220442

RAW WATER TRANSMISSION Ac-ft			PRECIPITATION (Inches)				
	<u>INPUT</u>	<u>DRAFT</u>	<u>THIS YEAR</u>		<u>AVERAGE YEAR</u>		
Briones Res.	0	0	<u>STATION</u>	<u>Today</u>	<u>This</u>	<u>Season</u>	<u>Season</u>
San Pablo Res.	30	55		<u>Month</u>	<u>to-Date</u>	<u>to-Date</u>	<u>Season</u>
U. San Leandro Res.	0	74	USL WTP	0	0.05	37.66	22.87
TOTAL	30	129	Orinda WTP	0	0	48.38	29.04
REMARKS			Lafayette Reservoir	0	0	34.29	25.62
WID Canal Diversion = 89 cfs			Walnut Creek WTP	0	0.02	40.65	21.2
Mokelumne River below WID = 3,706 cfs			Camp Pardee	0	0	32.35	18.86
			Salt Springs P.H.	0	0.04	67.79	39.2
			<u>CAPLES LAKE (7.830 FT) DATA</u>				
PG&E data as of 4:00 pm previous date.				<u>Today</u>	<u>Average</u>		
All other data as of midnight.			Snow Depth	159 Inches	64 Inches		
WTP capacities are sustainable rates.			Water Content	65.8 Inches	27.3 Inches		