



# Water Supply Update

Board of Directors

March 26, 2024

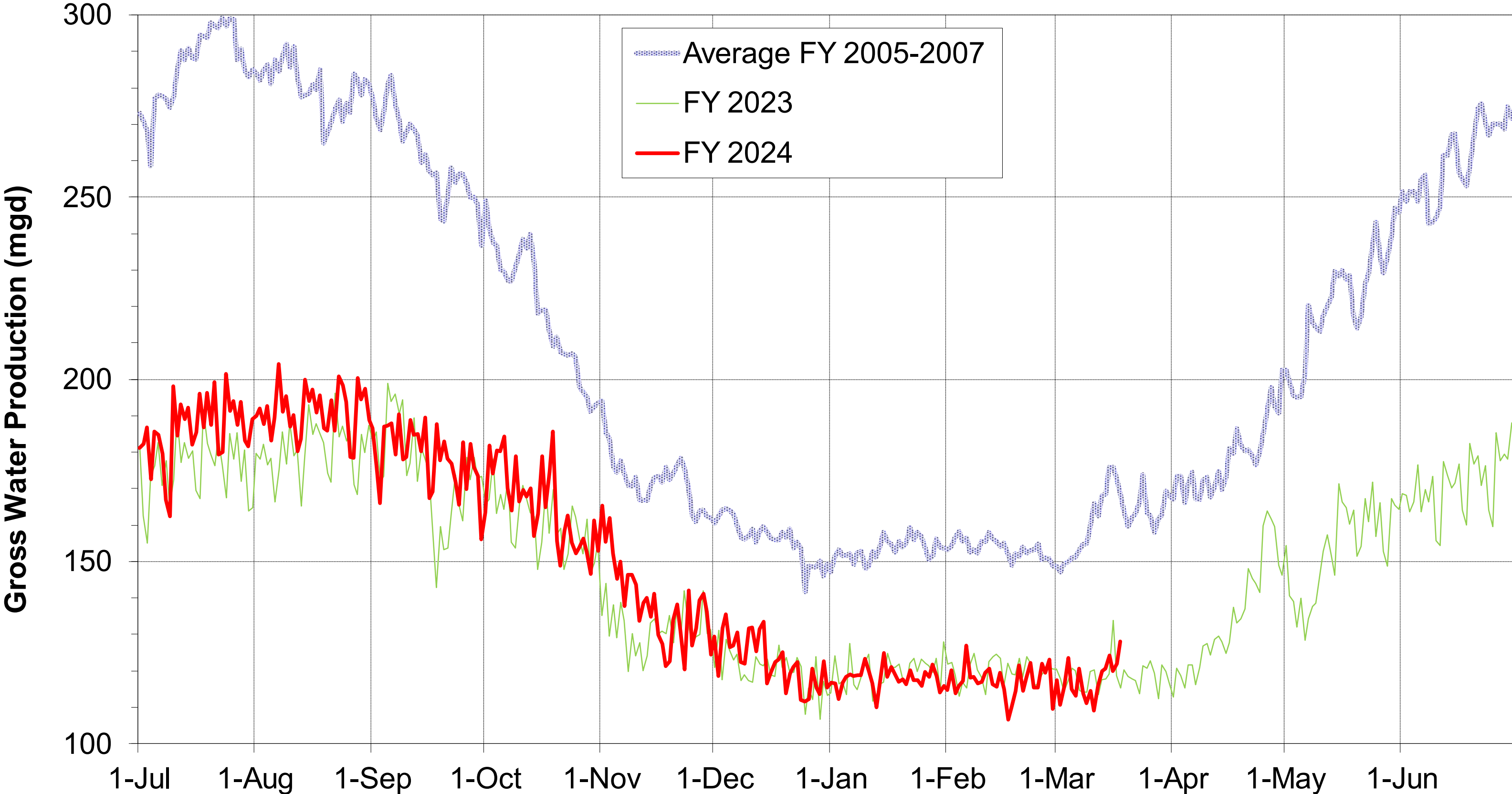
# Water Supply Briefing

- Current Water Supply
- California Water Supply
- Water Supply Projections



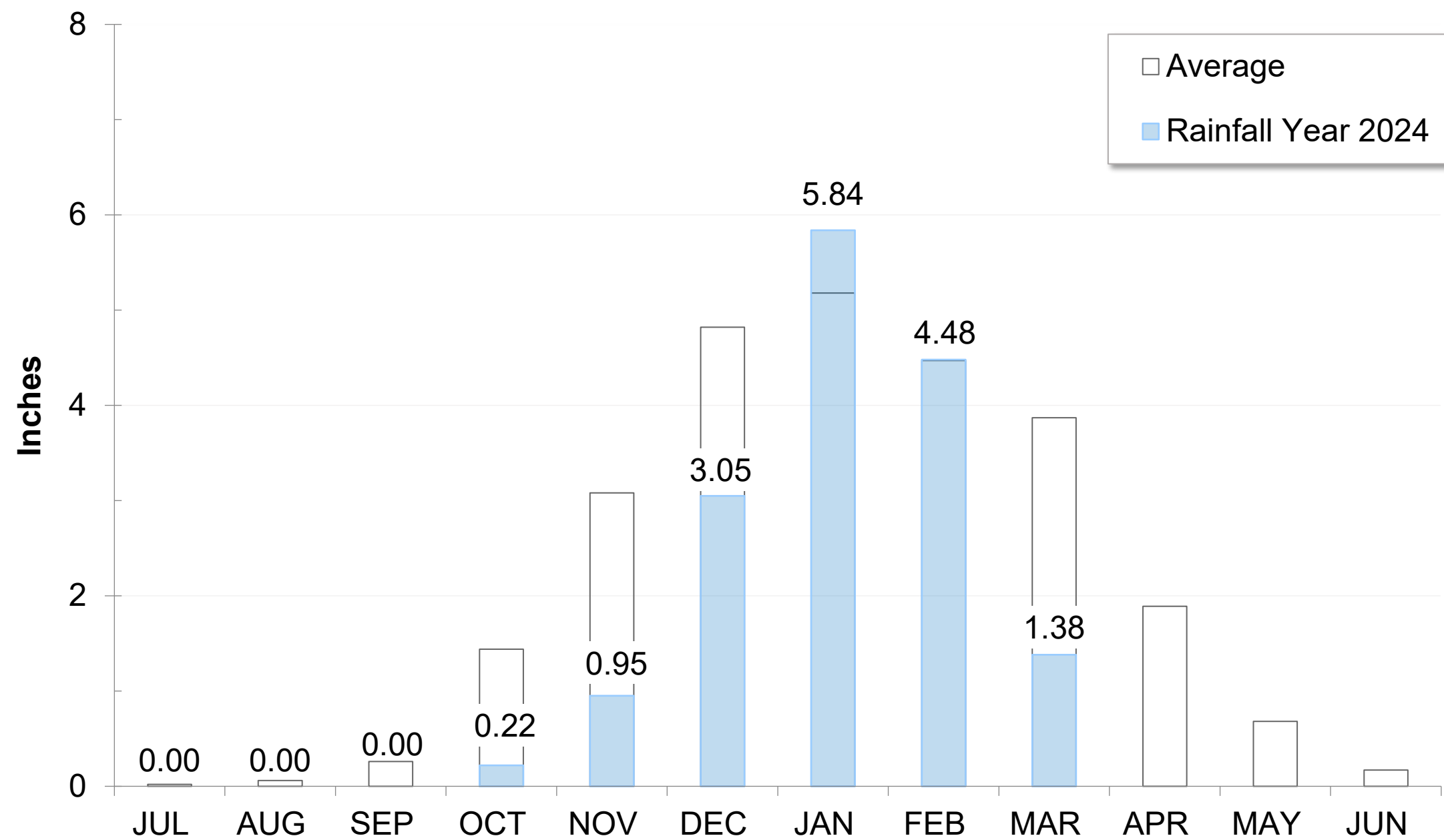
# Current Water Supply

# Gross Water Production



# Precipitation as of March 20

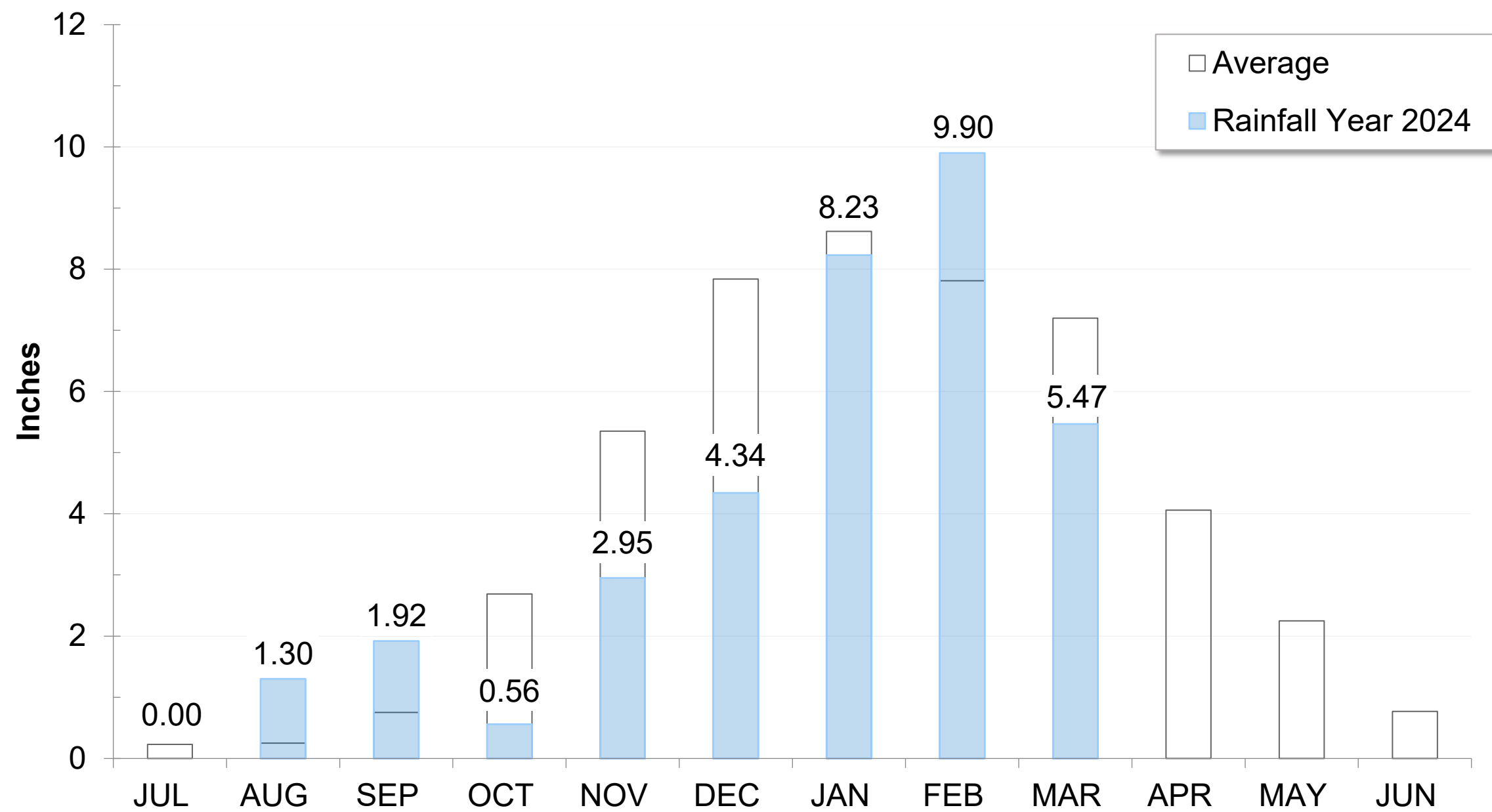
East Bay: 15.92" (71% of average)



San Pablo Reservoir Weather Station, D. Hansen, February 2024

# Precipitation as of March 20

Mokelumne: 34.67" (90% of Average)



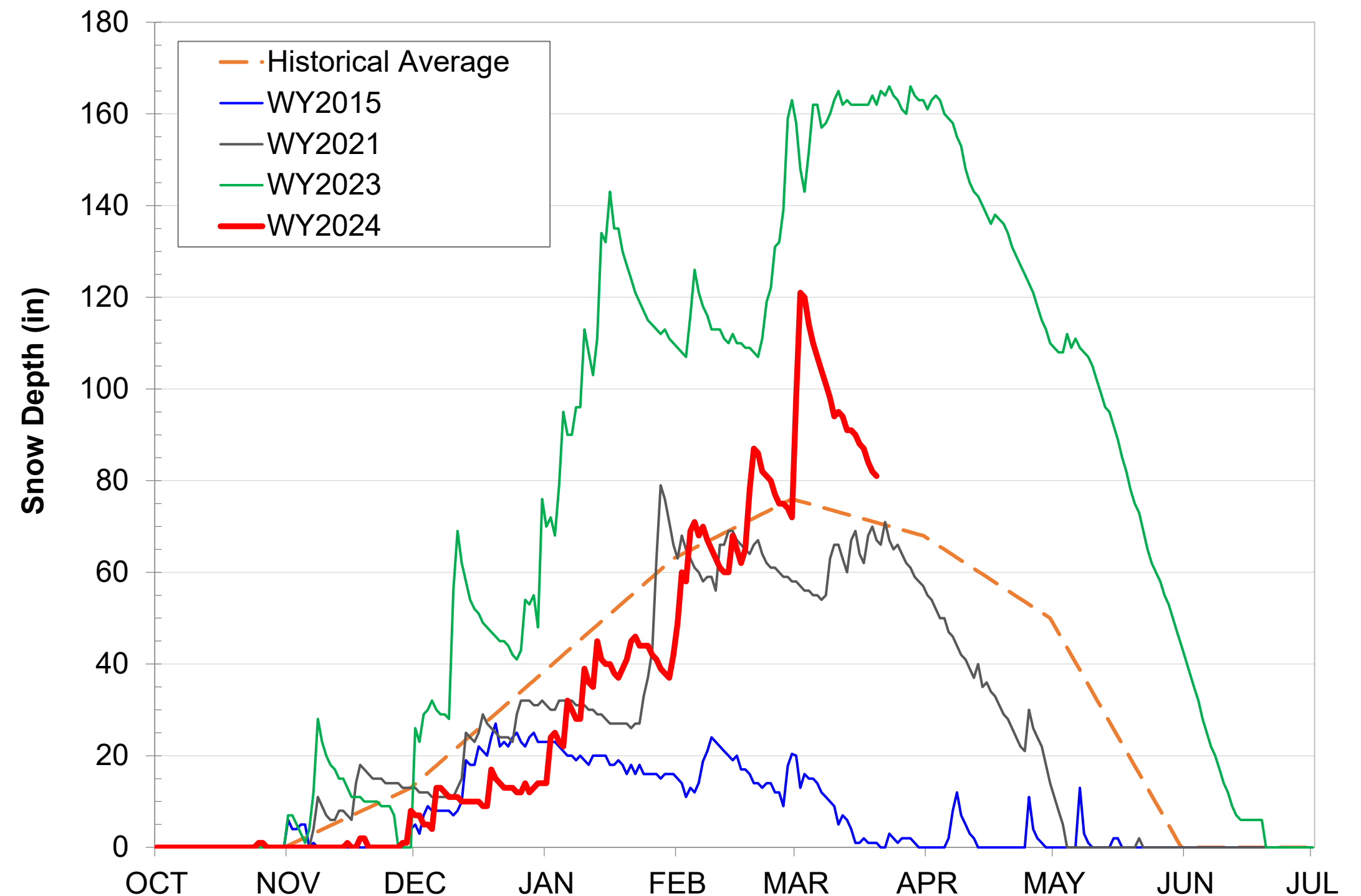
# High-Elevation Snow (Caples Lake) as of March 20

Snow Depth

81" (114% of average)

Snow Water Content

29.70" (107% of average)



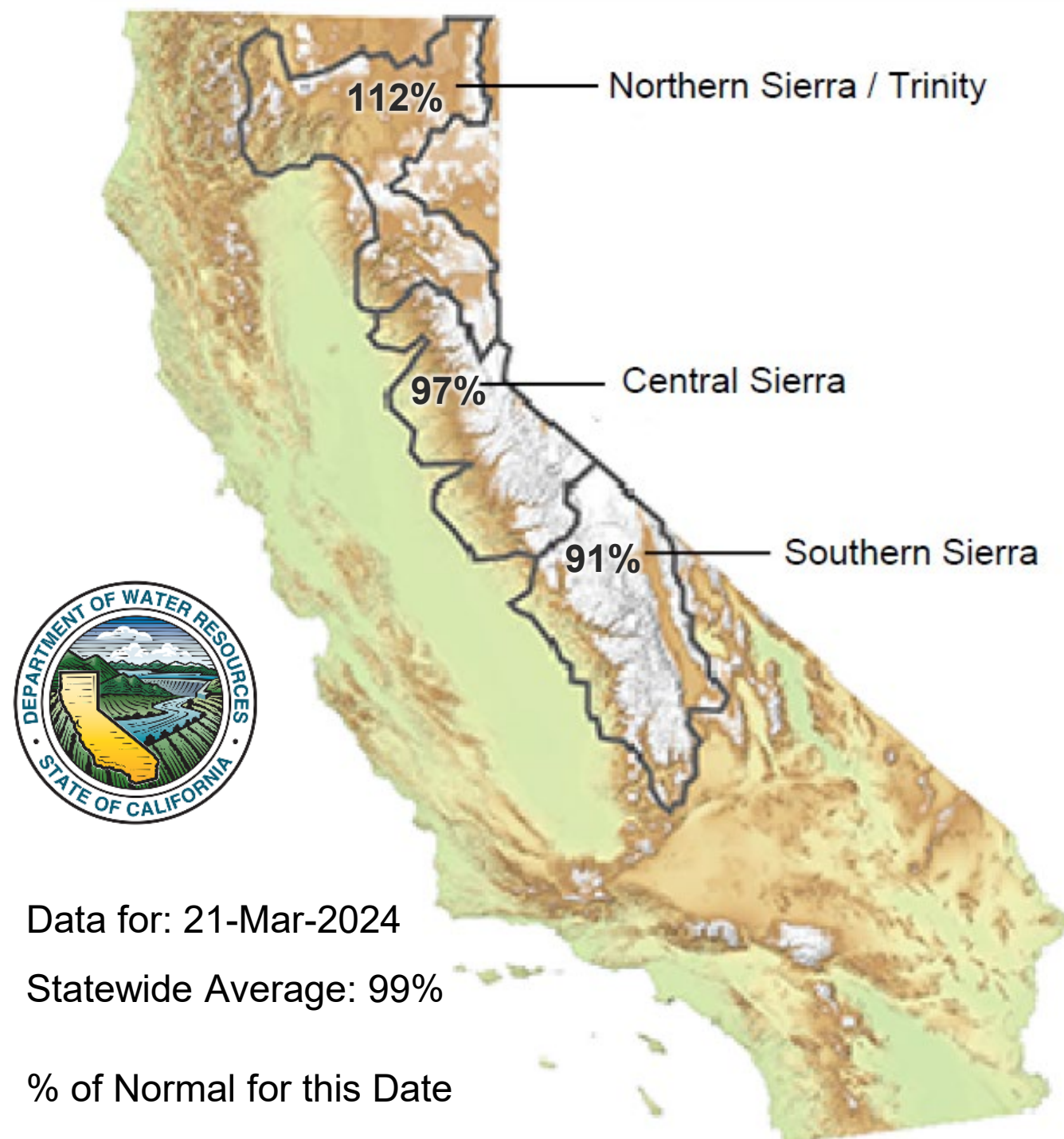
# California Water Supply





# Snowpack as of March 21

Snow Water Equivalent:  
97% in Central Sierra



Data for: 21-Mar-2024

Statewide Average: 99%

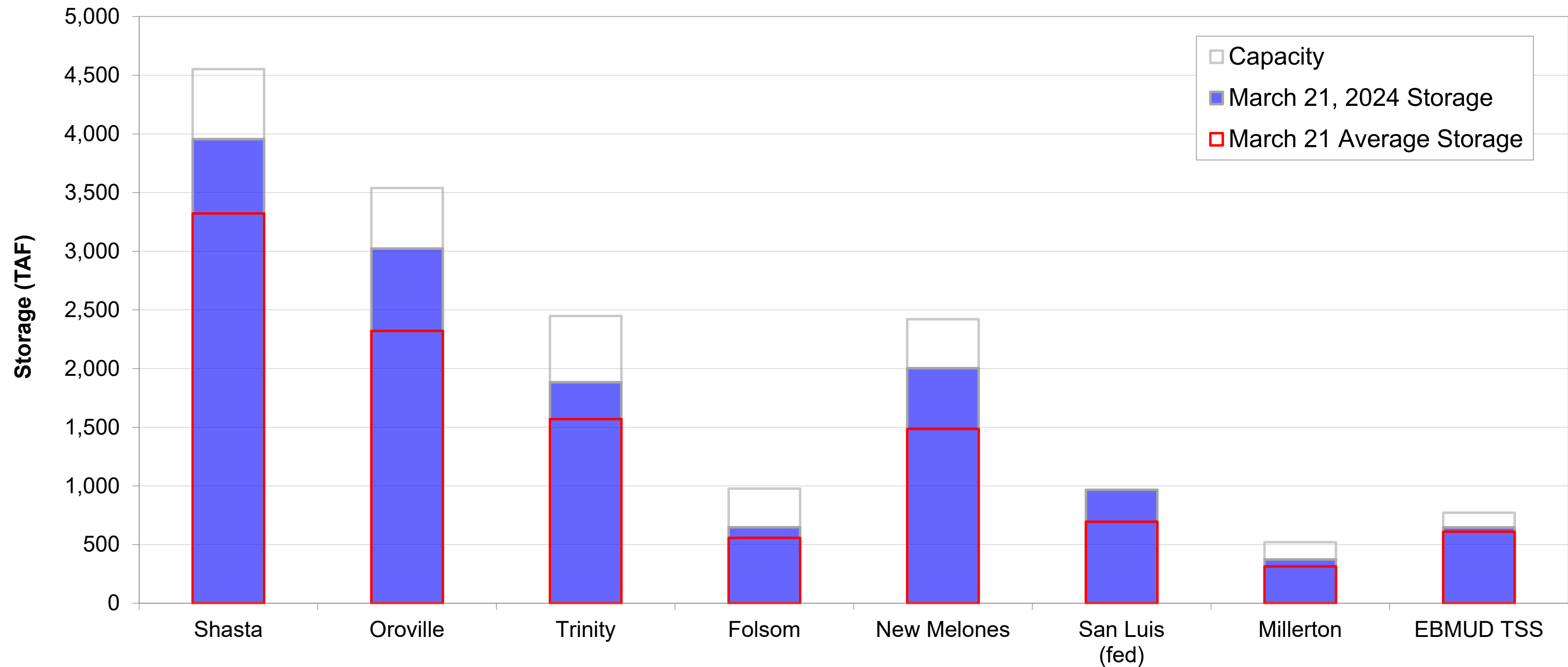
% of Normal for this Date



Caples Lake, J. Toone, January 2024

# Northern California Water Supply

## Current vs. Average Storage



TAF: Thousand Acre-Feet

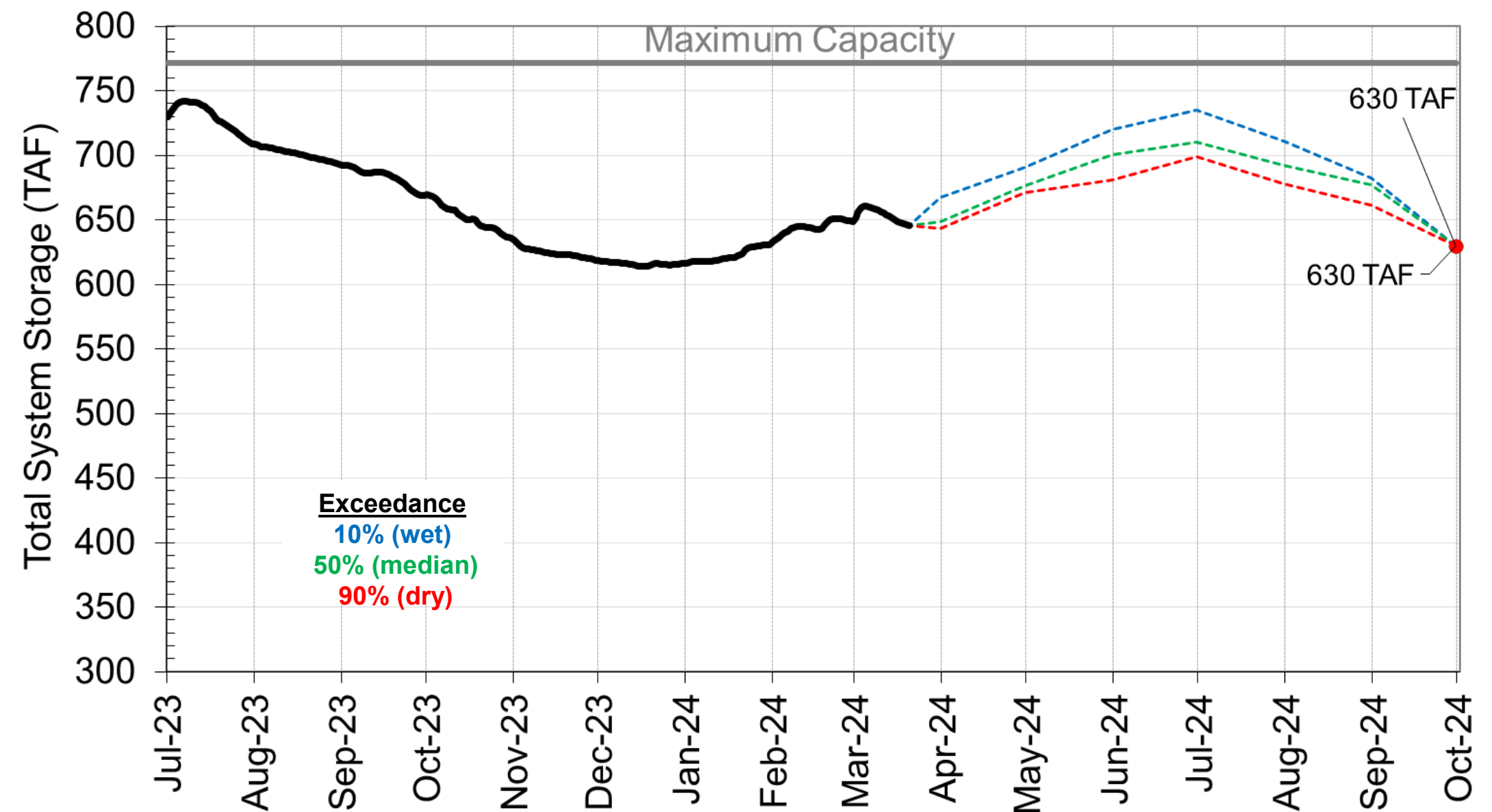
# Water Supply Projections

# Total System Storage as of March 20

Current: 647 TAF (106% of Average)

Reservoir	Current Storage, TAF	Percent of Average	Percent of Capacity
Pardee	173	93%	85%
Camanche	337	116%	81%
East Bay	137	101%	91%
<b>Total System</b>	<b>647</b>	<b>106%</b>	<b>84%</b>

Projected: 630 TAF by 9/30



TAF: Thousand Acre-Feet

# Questions



*Pardee Powerhouse, J. Wood, January 2023*



**FLOWING  
INTO  
THE  
FUTURE**

# WATER SUPPLY ENGINEERING DAILY REPORT

Thursday, March 21, 2024

## RESERVOIR STORAGE AND ELEVATION

	<u>WATER SURFACE</u>		<u>STORAGE</u>		<u>MAXIMUM CAPACITY</u>		Release <u>Cfs</u>	Spill <u>Cfs</u>
	Elevation <u>Feet</u>	+Gain <u>-Loss</u>	+Gain <u>Ac-Ft</u>	-Loss <u>-Loss</u>	Elevation <u>Feet</u>	Storage <u>Ac-Ft</u>		
<u>MOKELUMNE</u>								
Pardee	552.95	-0.02	172700	-40	567.65	203795	879	0
Camanche	224.33	0.12	337460	810	235.5	417120	501	0
<u>EAST BAY</u>								
Briones	574.89	0	58080	0	576.14	58960	0	0
Chabot	224.24	0.06	9350	20	227.25	10350	44	0
Lafayette	437.1	-0.01	2840	0	449.16	4250	0	0
San Pablo	304.94	-0.03	30990	-20	313.68	37915	0	0
Upper San Leandro	456.38	-0.06	<u>36200</u>	<u>-40</u>	459.98	<u>38905</u>	34	0
<u>Total East Bay Res.</u>			<u>137460</u>	<u>-40</u>		<u>150380</u>		
<b>TOTAL SYSTEM STORAGE</b>			<b>647620</b>	<b>730</b>		<b>771295</b>		

<b>DISTRIBUTION SYSTEM</b>		
<u>DISTRIBUTION RESERVOIRS</u>		
	Storage <u>MG</u>	Operating <u>Capacity</u>
Today	368	720
Total Previous Day	<u>362</u>	
Total Change	6	
<u>WATER PRODUCTION AND DEMAND</u>		
	Million <u>Gallons</u>	Capacity <u>MGD</u>
Lafayette WTP	0	25
Orinda WTP	90	190
San Pablo WTP	0	30
Sobrante WTP	17.3	50
Upper San Leandro WTP	0	45
Walnut Creek WTP	19.4	90
<u>TOTAL SURFACE PRODUCTION</u>	126.7	430
Miscellaneous(Estimated)	0.4	
<u>TOTAL WATER PRODUCTION</u>	<u>127.1</u>	
Change in Distribution System	6	
Wash Water from Distribution Sys.	0.4	
<u>SYSTEM DEMAND</u>		
	120.3	
East-of-Hills Demand	27.2	
West-of-Hills Demand	93.1	

<b>MOKELUMNE SYSTEM</b>			
<u>AQUEDUCT DELIVERIES</u>			
	<u>MG</u>	<u>Flow Conditions</u>	
Line 1	29.7	THROTTLE	
Line 2	34.9	THROTTLE	
Line 3	<u>48</u>	<u>THROTTLE</u>	
TOTAL	112.6	174 Cfs	
<u>FSCC to MOK AQUEDUCTS (Measured at Brandt), MG</u>			
Mok 1	0		
Mok 2	<u>0</u>		
	0 MG		
<u>RIVER FLOWS AND RELEASES</u>			
		<u>Cfs</u>	
Mokelumne River Natural Flow		1653	
Pardee Reservoir Inflow		1040	
Pardee Release to Camanche Res.		879	
Pardee Release to JVID		0	
Camanche Release to Mokel. River		501	
<u>PG&amp;E CO. STORAGE (Acre-feet)</u>			
	<u>Storage</u>	<u>Change</u>	<u>Maximum Capacity</u>
Old Reservoirs	8519	346	26560
Salt Springs Res.	26990	819	141857
Lower Bear Res.	<u>8177</u>	<u>50</u>	<u>52025</u>
Total	43686	1215	220442

<b>RAW WATER TRANSMISSION</b>		
	<u>Ac-ft</u>	
	<u>INPUT</u>	<u>DRAFT</u>
Briones Res.	0	0
San Pablo Res.	10	63
U. San Leandro Res.	0	0
<b>TOTAL</b>	<b>10</b>	<b>63</b>

<b>PRECIPITATION (Inches)</b>					
<u>STATION</u>	<u>THIS YEAR</u>			<u>AVERAGE YEAR</u>	
	<u>Today</u>	<u>This Month</u>	<u>Season to-Date</u>	<u>Season to-Date</u>	<u>Season Total</u>
USL WTP	0	1.57	17.62	21.29	25.33
Orinda WTP	0	1.02	22.67	26.98	32.06
Lafayette Reservoir	0	1.19	14.23	23.88	28.18
Walnut Creek WTP	0	2.17	15.94	19.79	23.02
Camp Pardee	0	2.7	15.59	17.34	21.56
Salt Springs P.H.	0	5.14	34.74	36.24	45.51

**REMARKS**  
 WID Canal Diversion = 57 cfs  
 Mokelumne River below WID = 453 cfs

<u>CAPLES LAKE (7,830 FT) DATA</u>				
	<u>Today</u>	<u>Average</u>		
Snow Depth	79 Inches	71 Inches		
Water Content	29.2 Inches	27.7 Inches		

PG&E data as of 4:00 pm previous date.  
 All other data as of midnight.  
 WTP capacities are sustainable rates.