



Sobrante Water Treatment Plant

Sobrante Water Treatment Plant Reliability Improvements Project

Update and Notice of Availability of Draft EIR
El Sobrante Municipal Advisory Council

October 9, 2024

EIR = Environmental Impact Report



Agenda

- Background
- Purpose and Need
- Project Objectives
- Public Outreach
- Draft EIR Analysis
- Next Steps

Purpose and Need

- Critical facility – summer operation, drought operation, and outages
- Continue to treat water supply from San Pablo Reservoir
 - Local runoff
 - Sacramento River (drought operation)

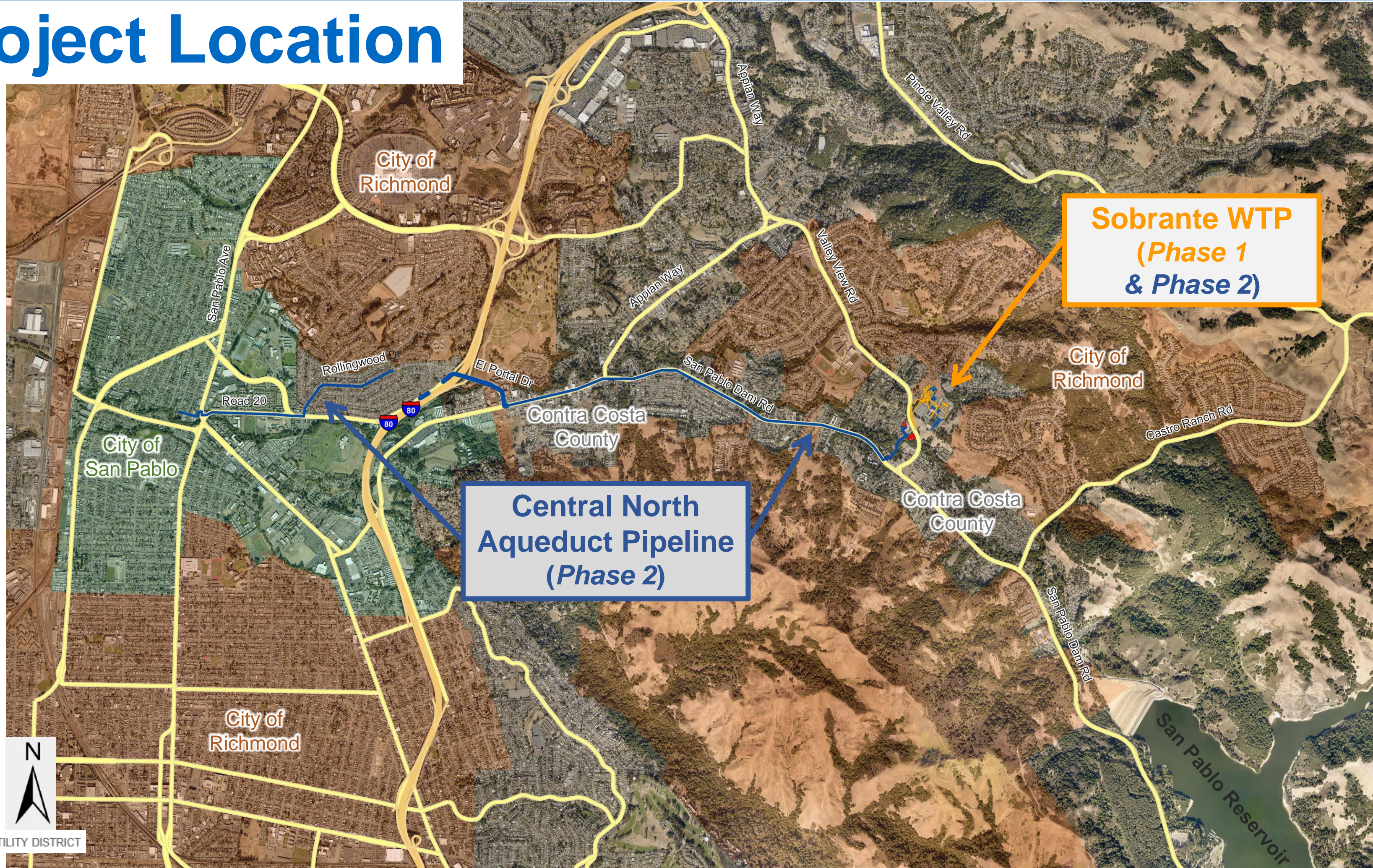


WTP = Water Treatment Plant

Project Objectives

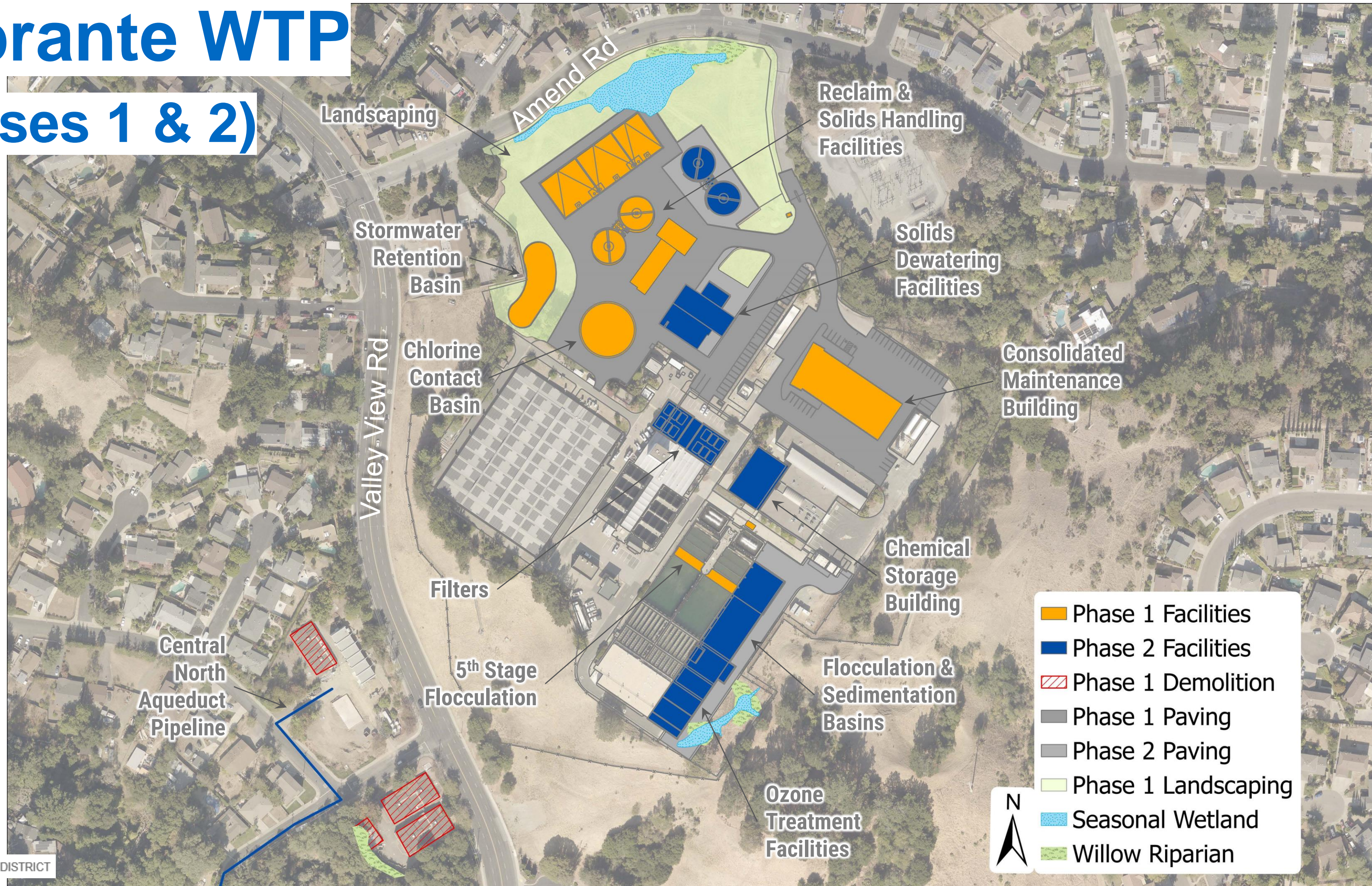
- Replace aging infrastructure
- Restore reliable treatment capacity to full capacity
- Reduce disinfection byproducts
- Improve efficiency of operations and maintenance
- Maintain flexibility to treat water from supplemental supplies
- Increase treatment capacity as needed to meet future demands

Project Location



Sobrante WTP

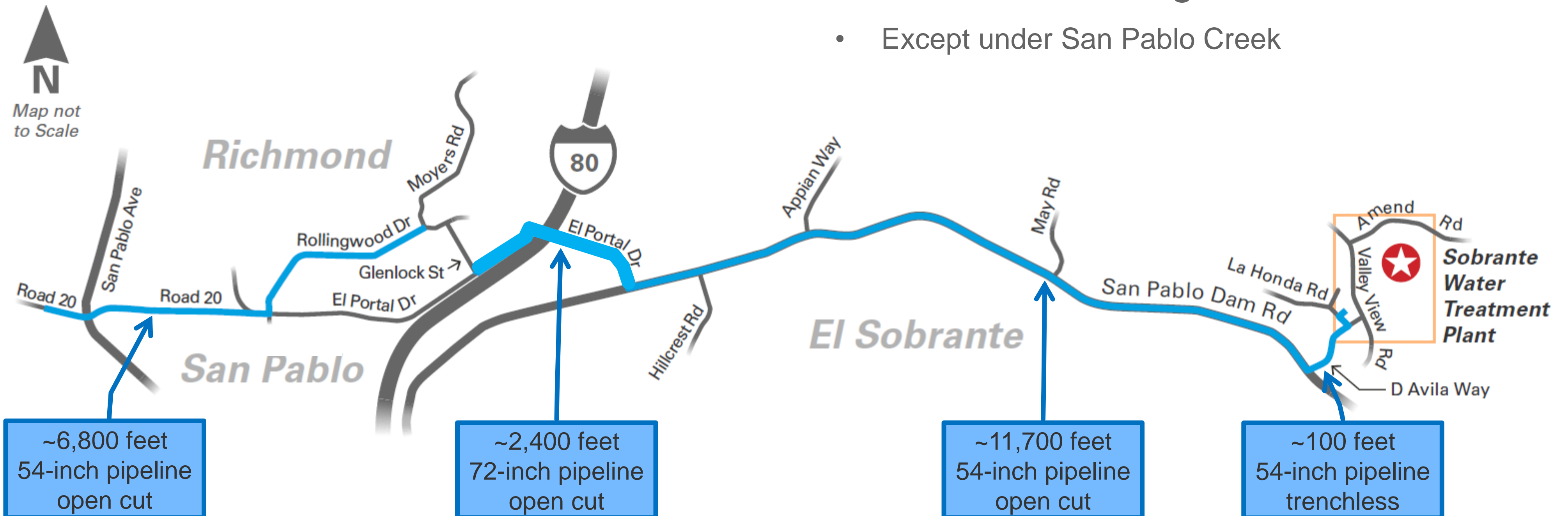
(Phases 1 & 2)



Central North Aqueduct Pipeline (Phase 2)

Constructed in existing roads

- Except under San Pablo Creek



Public Outreach

- Contra Costa County (July 2021)
- City of Richmond (July 2021)
- City of San Pablo (October 2021)
- Richmond Fire Dept (March 2022)
- General Public (March 2022, October 2022, April 2023)
- County Supervisor John Gioia (October 2022)
- Richmond City Council (June 2023)
- El Sobrante Municipal Advisory Council (August 2023)

Sobrante WTP

(Phases 1 & 2)



Draft EIR Analysis Results

Environmental Factors	Less than Significant	Less than Significant with Mitigation	Significant and Unavoidable
Aesthetics		√	
Air Quality	√		
Biological Resources		√	
Cultural Resources		√	
Energy	√		
Geology & Soils		√	
Greenhouse Gas Emissions	√		
Hazards & Hazardous Materials	√		
Hydrology & Water Quality	√		
Land Use and Planning	√		
Noise			√
Transportation		√	
Tribal Cultural Resources		√	
Wildfire	√		

Aesthetic Resources

Mitigation Measure: Landscape Maintenance

Sobrante WTP

- One year after planting, replace any project trees that are damaged, diseased, or fail to grow
- For five years after planting, provide supplemental irrigation



View of new facilities at Sobrante WTP from Amend Road

Biological Resources

Mitigation Measures: Willow Riparian and Seasonal Wetland Habitat Protection & Restoration

Sobrante WTP

- Avoid areas of willow riparian and seasonal wetland habitats, where feasible
- If unavoidable, then restore any impacted areas
- Permanently impacted areas shall be compensated through enhancement or creation of habit at onsite or offsite locations



Phases 1 and 2 Improvements at Sobrante WTP

Biological Resources

Mitigation Measure: California Red-Legged Frog and Western Pond Turtle

Central North Aqueduct pipeline (at San Pablo Creek)

- Install temporary exclusion fences



Cultural, Tribal Cultural, & Paleontological

Mitigation Measures: Archaeological, Tribal, and Paleontological Monitoring

Sobrante WTP and Central North Aqueduct pipeline

- In vicinity of previously recorded archaeological site
 - Archaeological and tribal monitor to be present two days per week
- Project excavations in Orinda Formation
 - Retain a professional paleontologist

Transportation

Mitigation Measures: Heavy Truck Traffic, AC Transit, Bicycle Safety, Pedestrian Access

Sobrante WTP

- Heavy truck traffic limited from 9:00 a.m. to 4:00 p.m.
- At schools on Valley View Rd and Camino Pablo, heavy truck traffic limited from 9:00 a.m. to 3:00 p.m.

Central North Aqueduct Pipeline

- At schools on Road 20, heavy truck traffic limited from 9:00 a.m. to 3:00 p.m.
- Temporary closure of bus stops and rerouting of bus lines will be coordinated with AC Transit
- As feasible avoid designated bikeways, else post detour signs.
- As feasible maintain one crosswalk at signalized intersections.



Example of Haul Truck



Alameda-Contra Costa Transit Bus

Noise

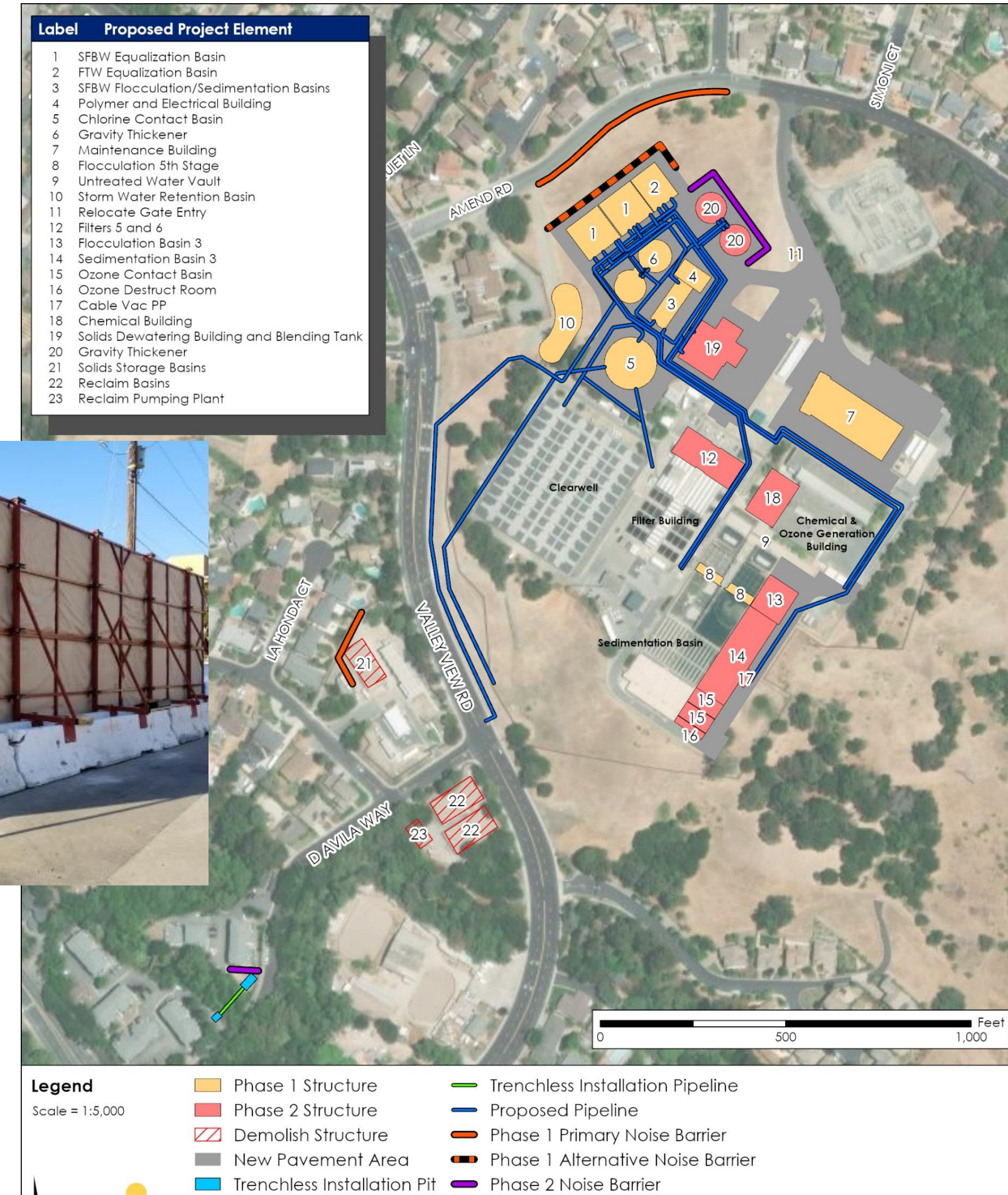
Mitigation Measures: Sound Barriers

Sobrante WTP and Central North Aqueduct pipeline (at San Pablo Creek)

- Install temporary sound barriers
 - Amend Road, 16-ft tall
 - Demolition area, 12-ft tall
 - Gravity thickeners, 12-ft tall
 - Trenchless pipeline, 12-ft tall



Example of Sound Wall



Noise

Mitigation Measures: Limit Hours and Off-Site Lodging

Central North Aqueduct pipeline

- In Contra Costa County, limit hours for excavation and grading activities from 7:30 a.m. to 5:30 p.m., where feasible
- Offer off-site lodging during nighttime construction (10:00 p.m. to 7:00 a.m.) at intersections & tie-ins
 - When required by encroachment permit or when limiting construction to daytime is infeasible
 - Offer off-site lodging to residences



Noise: Significant and Unavoidable

Sobrante WTP

- Pile driving of I-beams for SFBW basins is anticipated to exceed noise limits
 - Phase 1 for 20 days
- Concrete pouring prior to 7:00 a.m.
 - Phase 1 for 36 days and Phase 2 for 33 days
 - To complete concrete pours in a single day



I-Beam Installation



Concrete Pour

Noise: Significant and Unavoidable

Central North Aqueduct pipeline

- Construction at San Pablo Creek is anticipated to exceed noise limits for 42 days
- Construction in roadways is anticipated to exceed noise limits for 5 days at each location
- Nighttime construction at intersections and tie-ins for 5 to 10 days at each location



Trenchless Construction



Open Trench Construction

Next Steps

Public meeting for Draft EIR	October 10, 2024
Public review period ends	October 28, 2024
Board Certification of Final EIR	July 2025
Design of Phase 1	2027 to 2030
Construction of Phase 1	2030 to 2034
Design of Phase 2	TBD – Depends on Future Water Demands
Construction of Phase 2	TBD – Depends on Future Water Demands

Questions?



**FLOWING
INTO
THE
FUTURE**