



*Sobrante Water Treatment Plant*

# Sobrante Water Treatment Plant Reliability Improvements Project

**Notice of Availability of Draft EIR  
Public Meeting**

October 10, 2024

*EIR = Environmental Impact Report*



# Agenda

- Background
- Project description
- Public outreach and community feedback
- Draft Environmental Impact Report
- Next steps



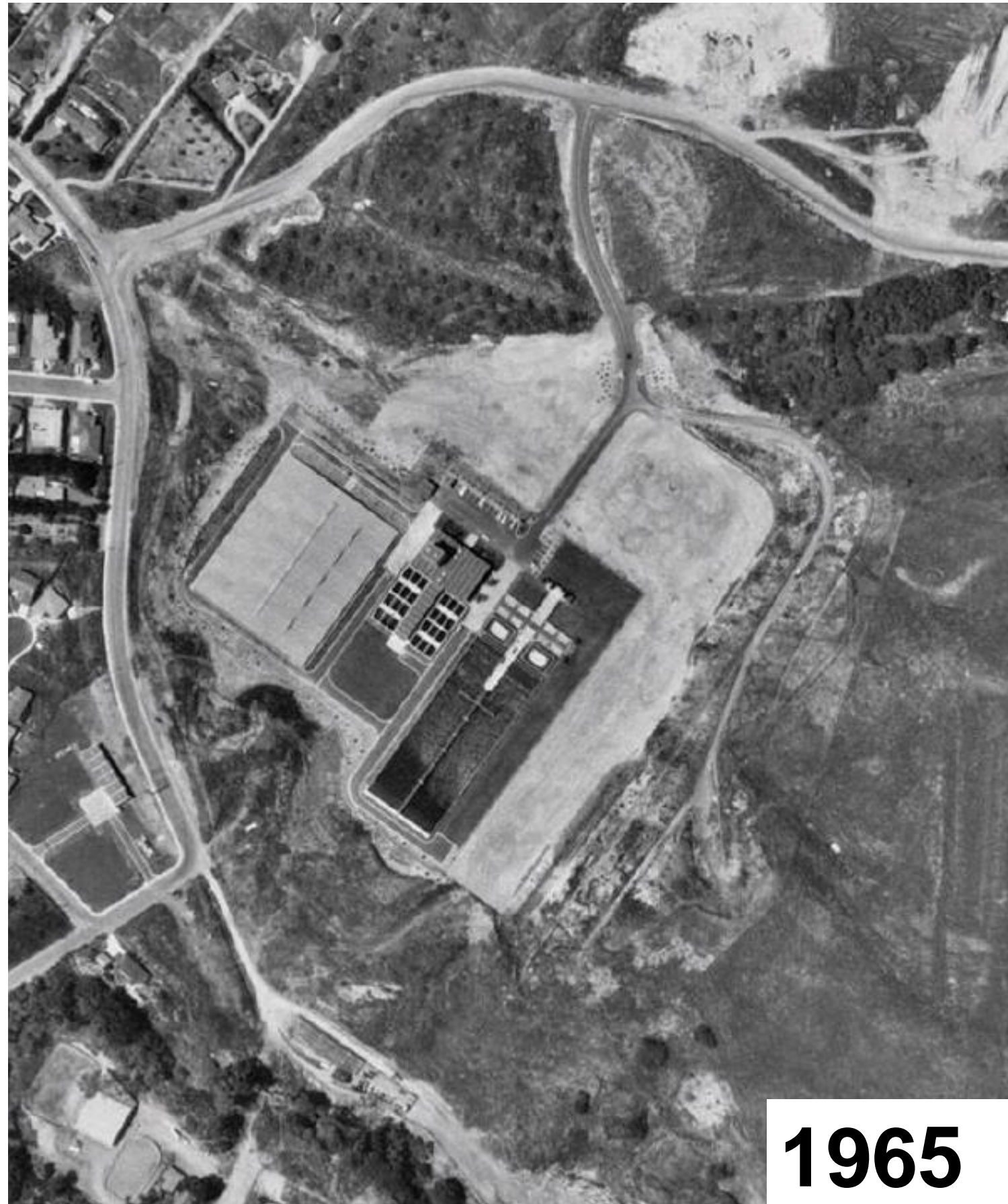
# Sobrante WTP

- Critical facility – summer operation, drought operation, and outages
- Untreated water from San Pablo Reservoir
  - Local runoff
  - Sacramento River (drought operation)





# Sobrante WTP Then and Now





# Face challenges and need to reliably...

**Droughts**



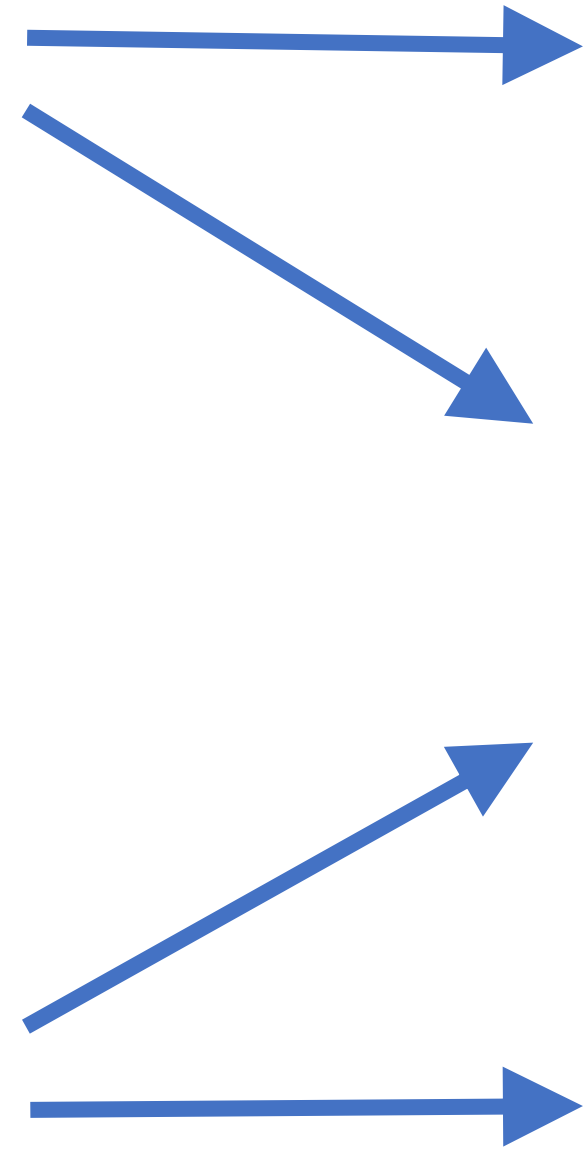
**Treat Water from Supplemental Supplies**



**Wildfires**



**Reduce Disinfection Byproducts**



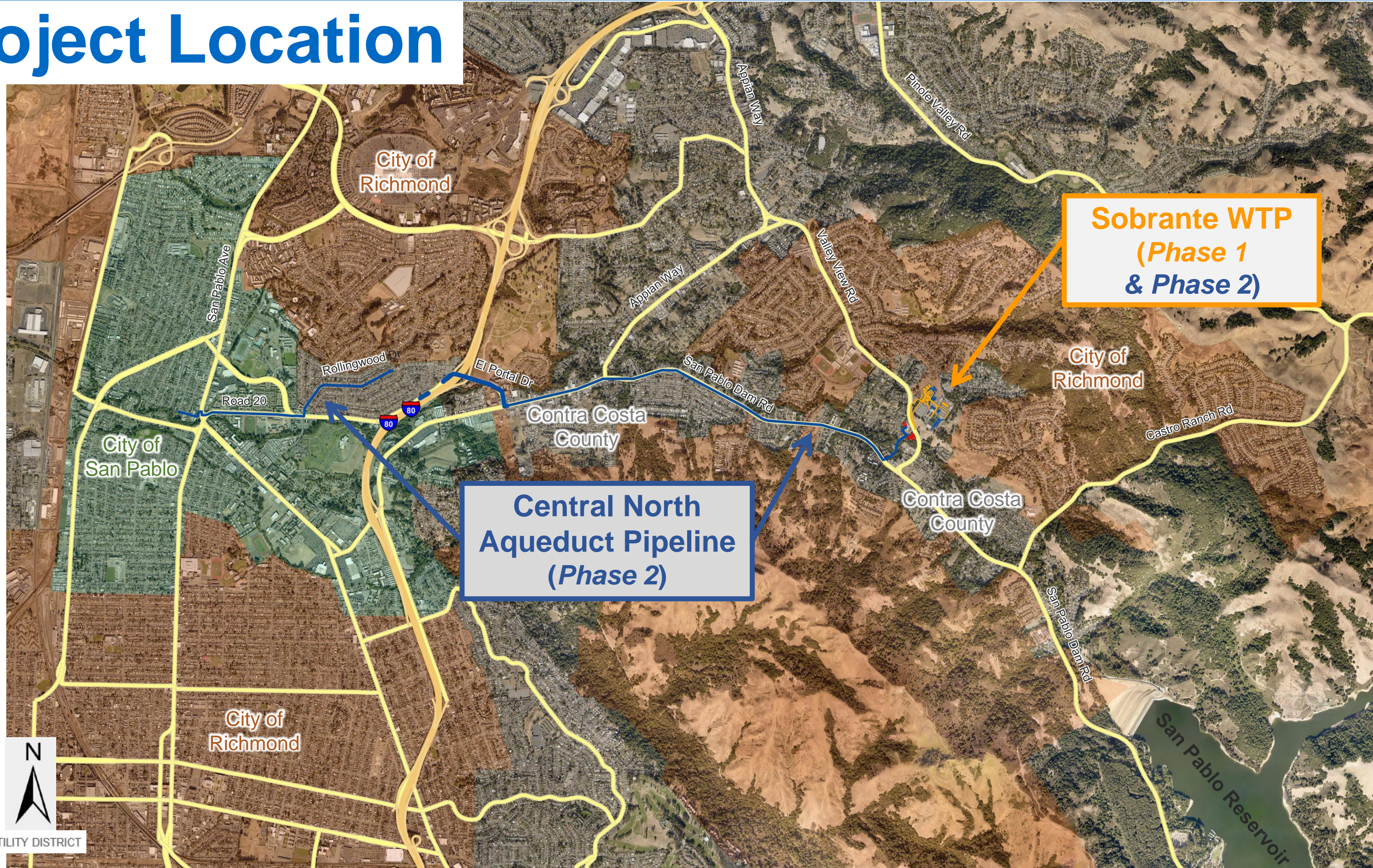


# Project Objectives

- Replace aging infrastructure
- Restore reliable treatment capacity to full capacity
- Reduce disinfection byproducts
- Improve efficiency of maintenance operations
- Maintain flexibility to treat water from supplemental supplies
- Increase treatment capacity as needed to meet future demands

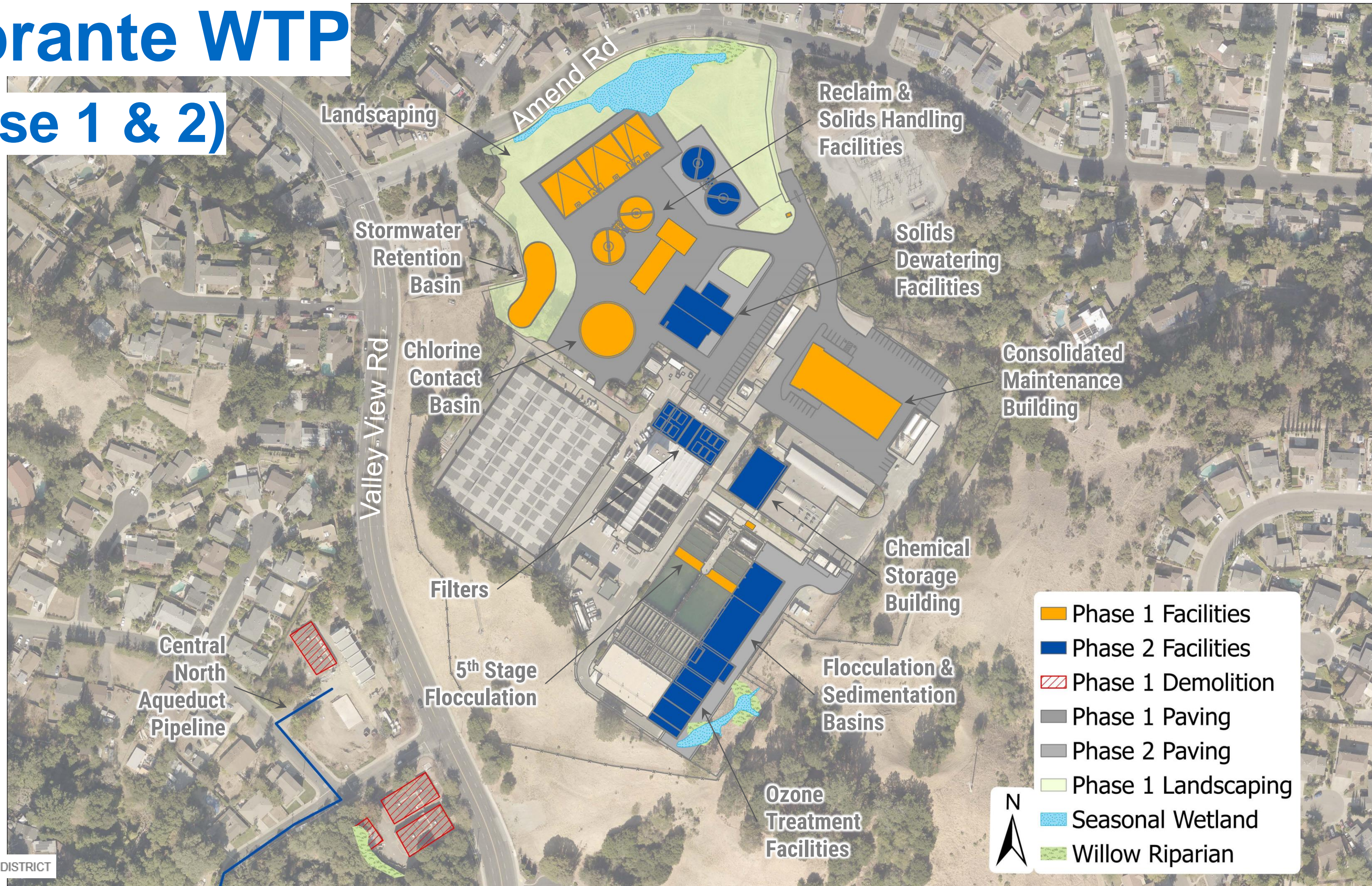


# Project Location





# Sobrante WTP (Phase 1 & 2)

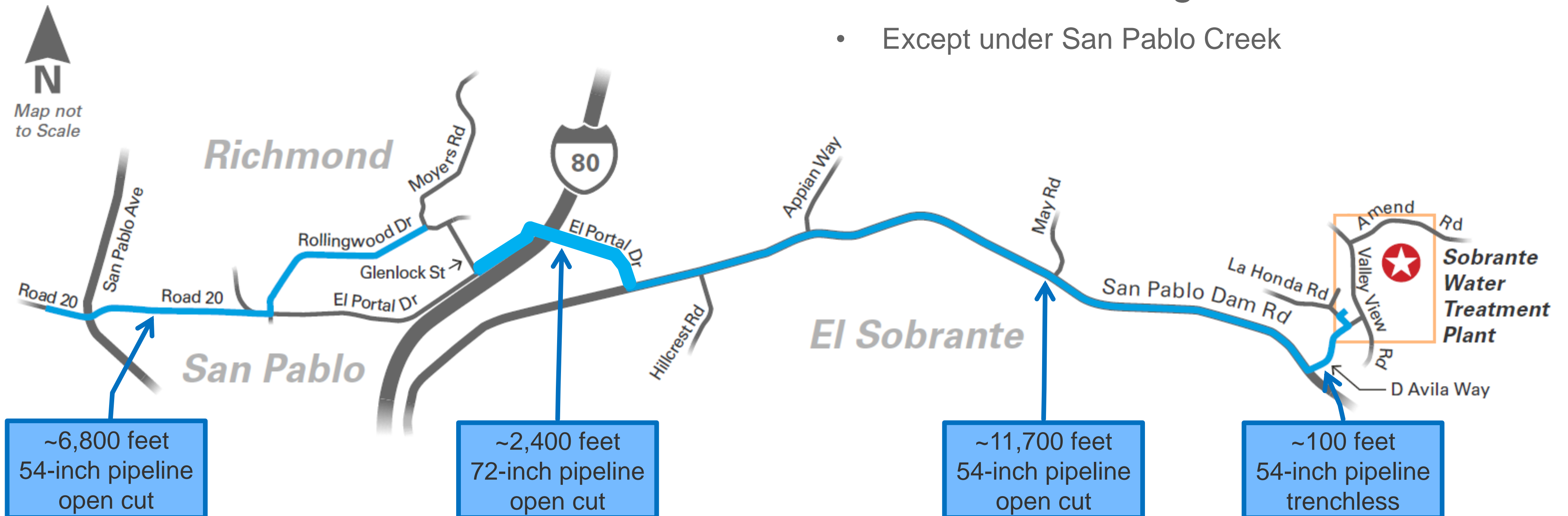




# Central North Aqueduct Pipeline (Phase 2)

Constructed in existing roads

- Except under San Pablo Creek





# Public Outreach

- Contra Costa County (Jul 2021)
- City of Richmond (Jul 2021)
- City of San Pablo (Oct 2021)
- Richmond Fire Dept (Mar 2022)
- General Public (Mar 2022, Oct 2022, Apr 2023)
- County Supervisor John Gioia (Oct 2022)
- Richmond City Council (Jun 2023)
- El Sobrante Municipal Advisory Council (Aug 2023, Oct 2024)



# Sobrante WTP (Phase 1 & 2)





# Draft EIR Analysis & Results

Environmental Factors	Less than Significant	Less than Significant with Mitigation	Significant and Unavoidable
Aesthetics		√	
Air Quality	√		
Biological Resources		√	
Cultural Resources		√	
Energy	√		
Geology & Soils		√	
Greenhouse Gas Emissions	√		
Hazards & Hazardous Materials	√		
Hydrology & Water Quality	√		
Land Use and Planning	√		
Noise			√
Transportation		√	
Tribal Cultural Resources		√	
Wildfire	√		



# Aesthetic Resources

## Mitigation Measure: Landscape Maintenance

### Sobrante WTP (Phase 1)

- Prior to planting
  - Inspect all project trees and shrubs
- 1 year after planting
  - Replace any project trees that fail to grow
- 5 years after planting
  - Irrigate during this period



*View of new facilities at Sobrante WTP from Amend Road*



# Biological Resources

## Mitigation Measure: Willow Riparian and Seasonal Wetland Habitat Protection & Restoration

### Sobrante WTP (Phases 1 & 2)

- Avoid areas of willow riparian and seasonal wetland habitats, where feasible
- If unavoidable, then
  - Conduct pre-construction survey
  - Restore any impacted areas to pre-project conditions
  - Monitor and report annually for up to five (5) years or until success criteria are met



Phases 1 and 2 Improvements at Sobrante WTP



# Biological Resources

## Mitigation Measure: Sensitive Natural Community Compensatory Mitigation

### Sobrante WTP (Phases 1 & 2)

- Permanent impacts on willow riparian and seasonal wetland habitats shall be compensated through enhancement or creation of habitat at on-site or offsite locations
- If on-site mitigation is not feasible, then mitigation credit maybe purchased from CDFW and RWQCB-approved mitigation bank





# Biological Resources

## Mitigation Measure: California Red-Legged Frog and Western Pond Turtle

Central North Aqueduct pipeline (Phase 2, San Pablo Creek)

- Conduct pre-construction survey
- Install temporary exclusion fences
- If frog or potential burrows, or turtle are found, then allow frog or turtle to leave work area on its own or adjust work area limits to avoid the frog or turtle
- If unavoidable, then District shall obtain any required USFWS permit/approval to relocated the individual(s)





# Cultural & Tribal Cultural Resources

## Mitigation Measure: Archaeological and Tribal Monitoring

### Central North Aqueduct pipeline (Phase 2)

- Within 250-foot of previously recorded site and areas with moderate sensitivity for buried resources
  - Archaeological and tribal monitor to be present two days per week to inspect unexcavated sediment
  - May reduce to periodic monitoring or cease inspections entirely
  - If sediments are likely to contain archaeological resources are identified, then develop a monitoring plan



*Example of Artifacts*

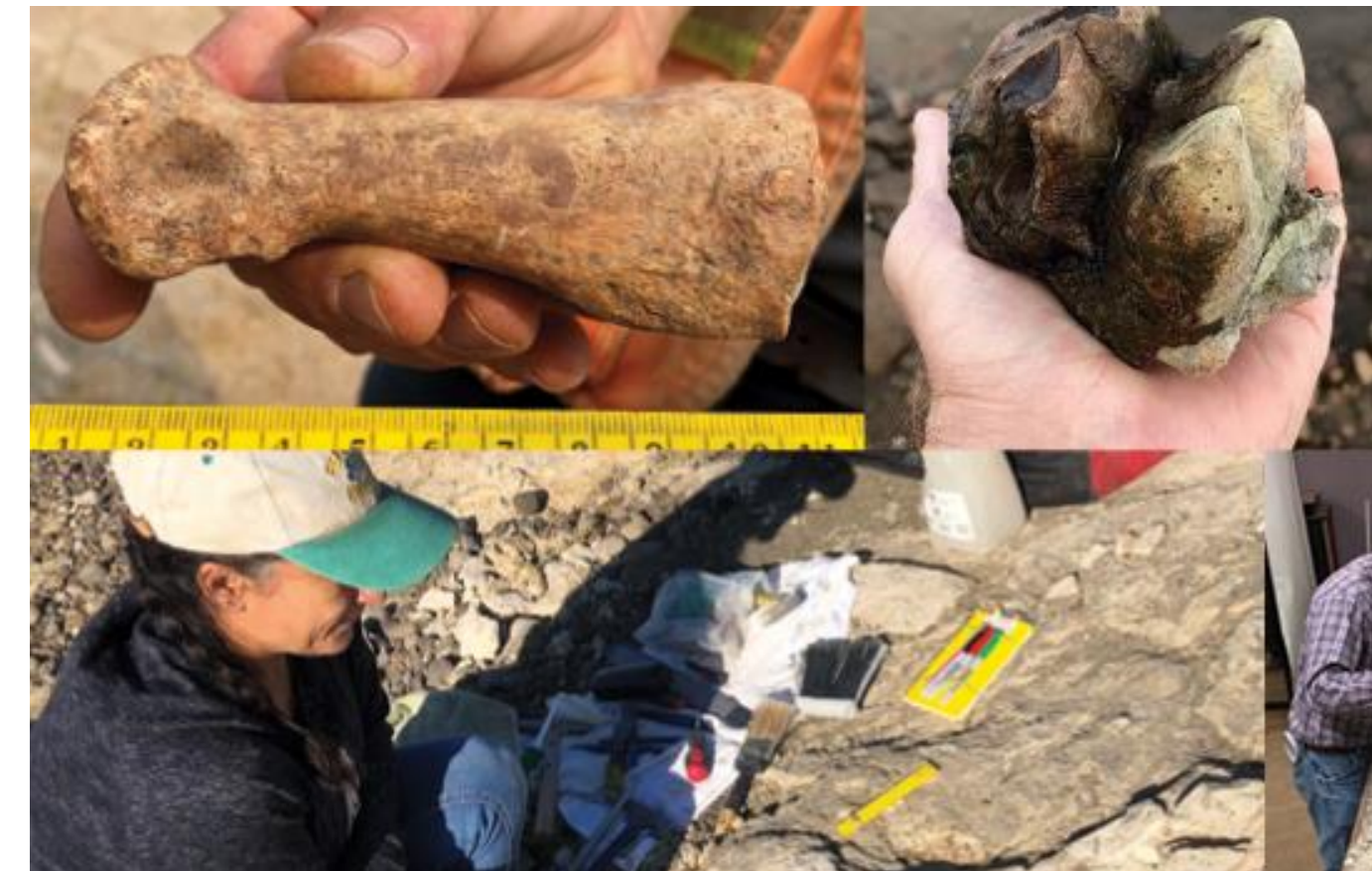


# Geology & Soils

## Mitigation Measure: Paleontological Resource Monitoring Plan

Sobrante WTP (Phases 1 & 2) and Central North Aqueduct pipeline (Phase 2)

- Project excavations in the Orinda Formation
- Retain a professional paleontologist
- Prepare Paleontological Resource Monitoring Plan



*Example of Fossils (Mokelumne Watershed, 2021)* 18



# Transportation & Noise

## Hours of Construction

Weekdays	Start Time	End Time
Project (typical)	7:00 a.m.	7:00 p.m.
City of Richmond	7:00 a.m.	7:00 p.m.
City of San Pablo	7:00 a.m.	10:00 p.m.
Contra Costa County*	7:30 a.m.	5:30 p.m.

*\*Limits on excavation and grading activities.*



# Transportation

## Mitigation Measure: Restrictions to Heavy Truck Traffic

### Sobrante WTP (Phases 1 & 2)

- Off hauling of soil & demolition material
  - Limited to hours of 9:00 a.m. to 4:00 p.m.
- At schools on Valley View Rd and Camino Pablo
  - Limited to hours of 9:00 a.m. to 3:00 p.m.
- Concrete pours may begin as early as 6:00 a.m.
- Any pavement damaged will be repaired



*Example of Haul Truck*



# Transportation

## Mitigation Measure: Restrictions to Heavy Truck Traffic

### Central North Aqueduct pipeline (Phase 2)

- At school on Road 20
  - Limited to hours of 9:00 a.m. to 3:00 p.m.
- Any pavement damaged will be repaired



*Example of Haul Truck*



# Transportation

## Mitigation Measure: Coordinate with AC Transit

### Central North Aqueduct pipeline (Phase 2)

- Coordinate with minimum 60 days in advance of construction that requires:
  - Temporary closure of bus stops
  - Temporary rerouting of bus lines



*Alameda-Contra Costa Transit Bus*



# Transportation

## Mitigation Measure: Bicycle Safety

### Central North Aqueduct pipeline (Phase 2)

- Open cut construction in roadways
- Avoid striped/designated bikeways (Class II), where feasible
- Post notices along roadways 14 day prior to construction
  - Location, dates, and detour routes



*Example of Designated Bikeway*



# Transportation

## Mitigation Measure: Pedestrian Access

### Central North Aqueduct pipeline (Phase 2)

- Minimum of one crosswalk will be accessible at any given time at each of the affected signalized intersections on Valley View Road, San Pablo Dam Road, El Portal Drive, and Road 20, where feasible
- Prepare a pedestrian access plan



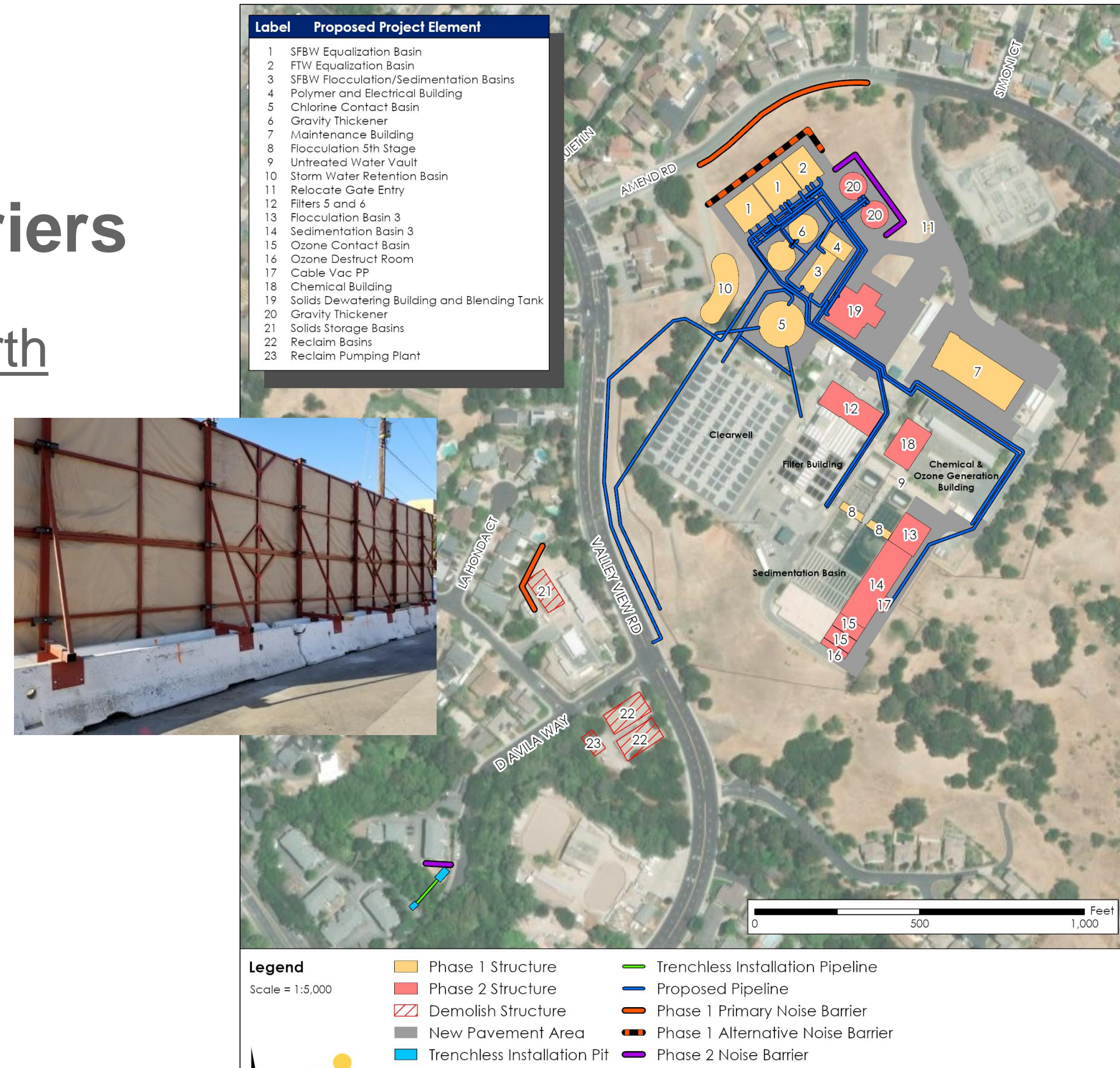


# Noise

## Mitigation Measures: Sound Barriers

### Sobrante WTP (Phases 1 & 2) and Central North Aqueduct pipeline (Phase 2, San Pablo Creek)

- Install temporary sound barriers for Phase 1
  - Amend Road, 16-ft tall
  - Demolition area, 12-ft tall
  
- Install temporary sound barriers for Phase 2
  - Gravity thickeners, 12-ft tall
  - Trenchless pipeline, 12-ft tall





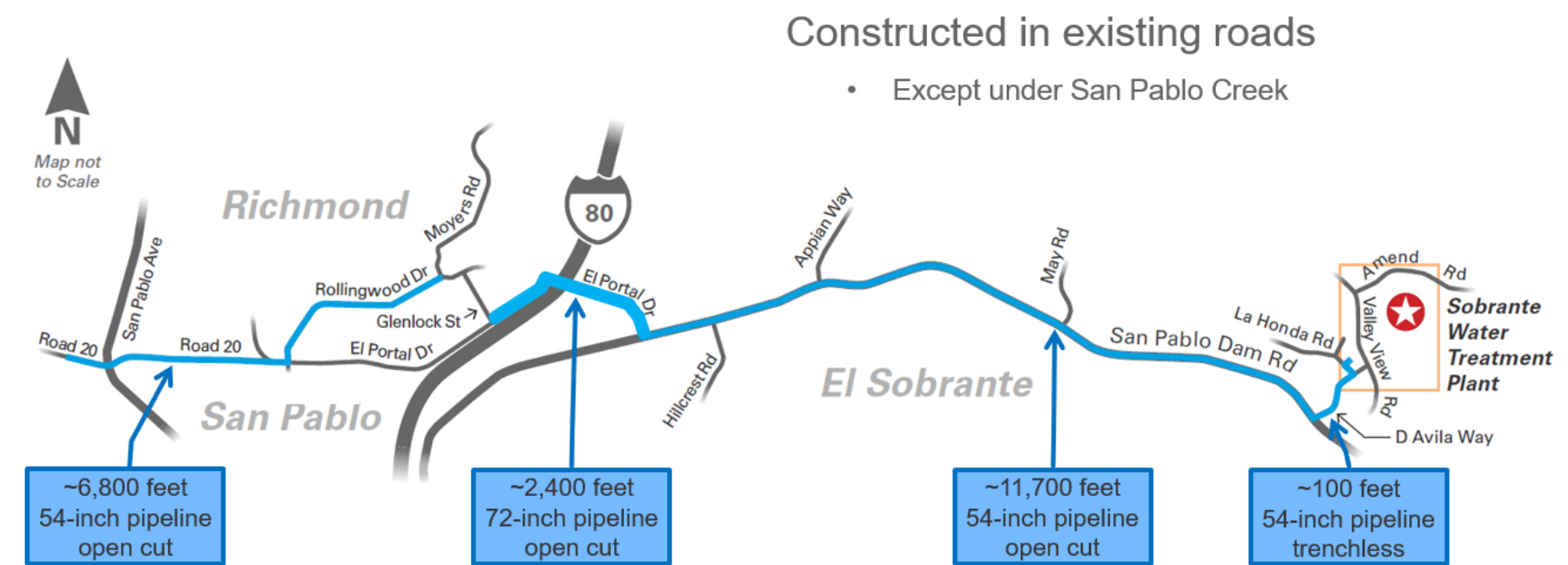
# Noise

## Mitigation Measures: Limit Hours and Off-Site Lodging

### Central North Aqueduct pipeline (Phase 2)

- In Contra Costa County, limit hours for excavation and grading activities from 7:30 a.m. to 5:30 p.m., where feasible
- Offer off-site lodging during nighttime construction (10:00 p.m. to 7:00 a.m.) at intersections & tie-ins
  - When required by encroachment permit or when limiting construction to daytime is infeasible
  - Residences within 660 feet

### Central North Aqueduct Pipeline (Phase 2)





# Noise: Significant and Unavoidable

## Sobrante WTP (Phase 1 & 2)

- Pile driving of I-beams for SFBW basins is anticipated to exceed noise limits
  - Phase 1 for 20 days
- Concrete pouring prior to 7:00 a.m.
  - Phase 1 for 36 days and Phase 2 for 33 days
  - To complete concrete pours in a single day.



*I-Beam Installation*



*Concrete Pour*



# Noise: Significant and Unavoidable

## Central North Aqueduct pipeline (Phase 2)

- Construction at San Pablo Creek is anticipated to exceed noise limits
  - For 42 days
- Construction in roadways is anticipated to exceed noise limits
  - For 5 days at each location
- Nighttime construction at intersections and tie-ins
  - For 5 to 10 days at each location



*Trenchless Construction*



*Open Trench Construction*



# Next Steps

Public review period ends	October 28, 2024
Board Certification of Final EIR	July 2025
Design of Phase 1	2027 to 2030
Construction of Phase 1	2030 to 2034
Design of Phase 2	TBD
Construction of Phase 2	TBD



# For more information and comments

More information can be found at the

**Project Website:**

[www.ebmud.com/sowtp](http://www.ebmud.com/sowtp)

**Questions and Comments:**

[sowtp.improvements@ebmud.com](mailto:sowtp.improvements@ebmud.com)

*Or by mail:*

Jae Park

East Bay Municipal Utility District

P.O. 24055, MS 701

Oakland, CA 94623