



# Water Supply Update

Board of Directors

February 11, 2025

Roberto C. Cortez, Manager of Water Operations



Forest Creek Streamflow Gage, J. Toone, August 2023

# Briefing Topics

- Current Water Supply
- Water Supply Projection

# Current Water Supply

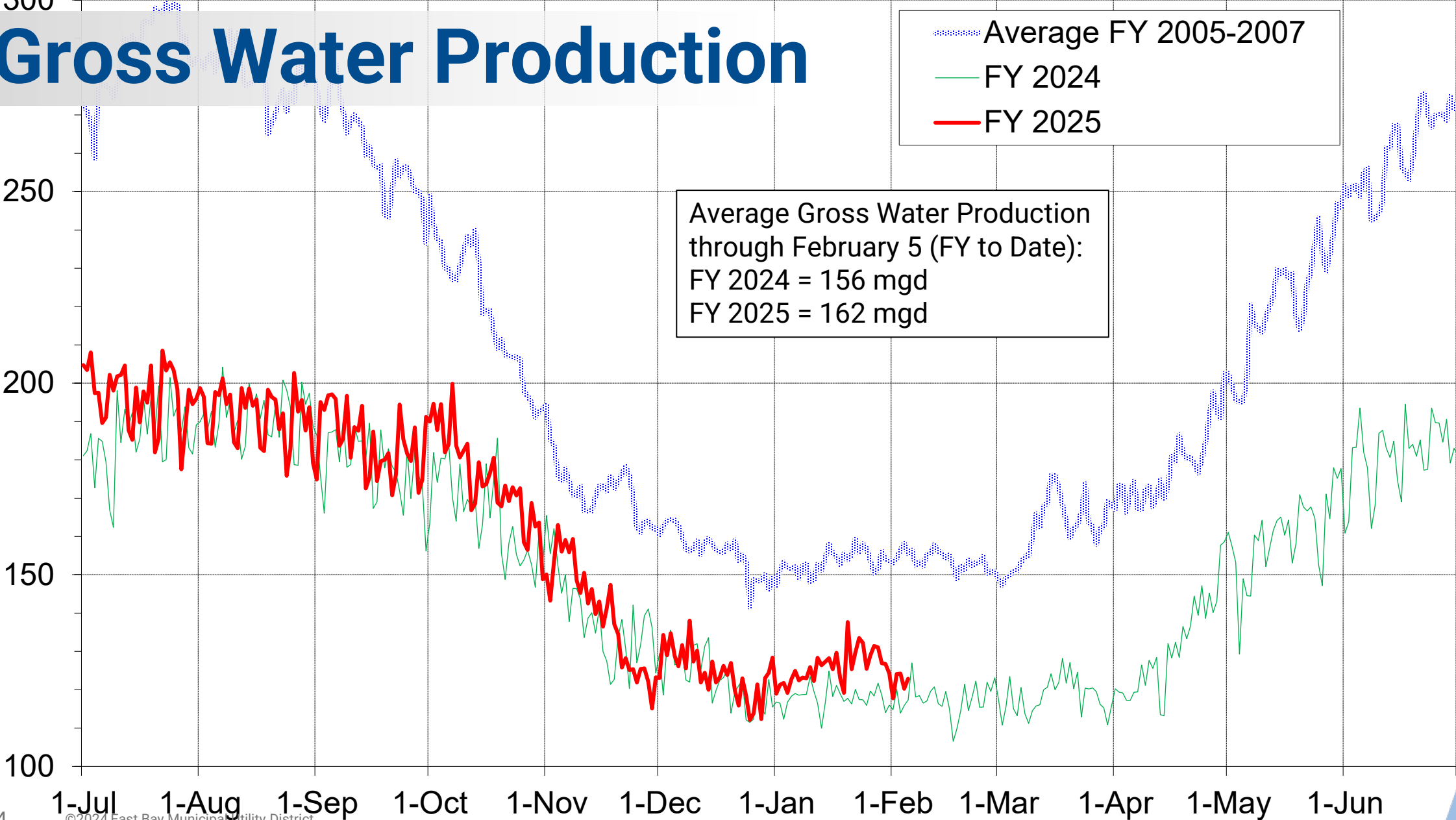
A blue-tinted photograph of a river flowing over rocks, with dense trees in the background. The river is the central focus, with water cascading over a bed of smooth, dark rocks. The banks are lined with thick, leafy trees, creating a lush, natural setting. The overall scene is serene and emphasizes the natural source of water.

# Gross Water Production

- Average FY 2005-2007
- FY 2024
- FY 2025

Average Gross Water Production through February 5 (FY to Date):  
FY 2024 = 156 mgd  
FY 2025 = 162 mgd

Gross Water Production (mgd)



# Reservoir Storage

As of 2/5/2025	Current Storage	Percent of Average	Percent of Capacity
Pardee	177,660 AF	99%	87%
Camanche	302,160 AF	115%	72%
East Bay	127,730 AF	100%	85%
Total System	607,550 AF	107%	79%

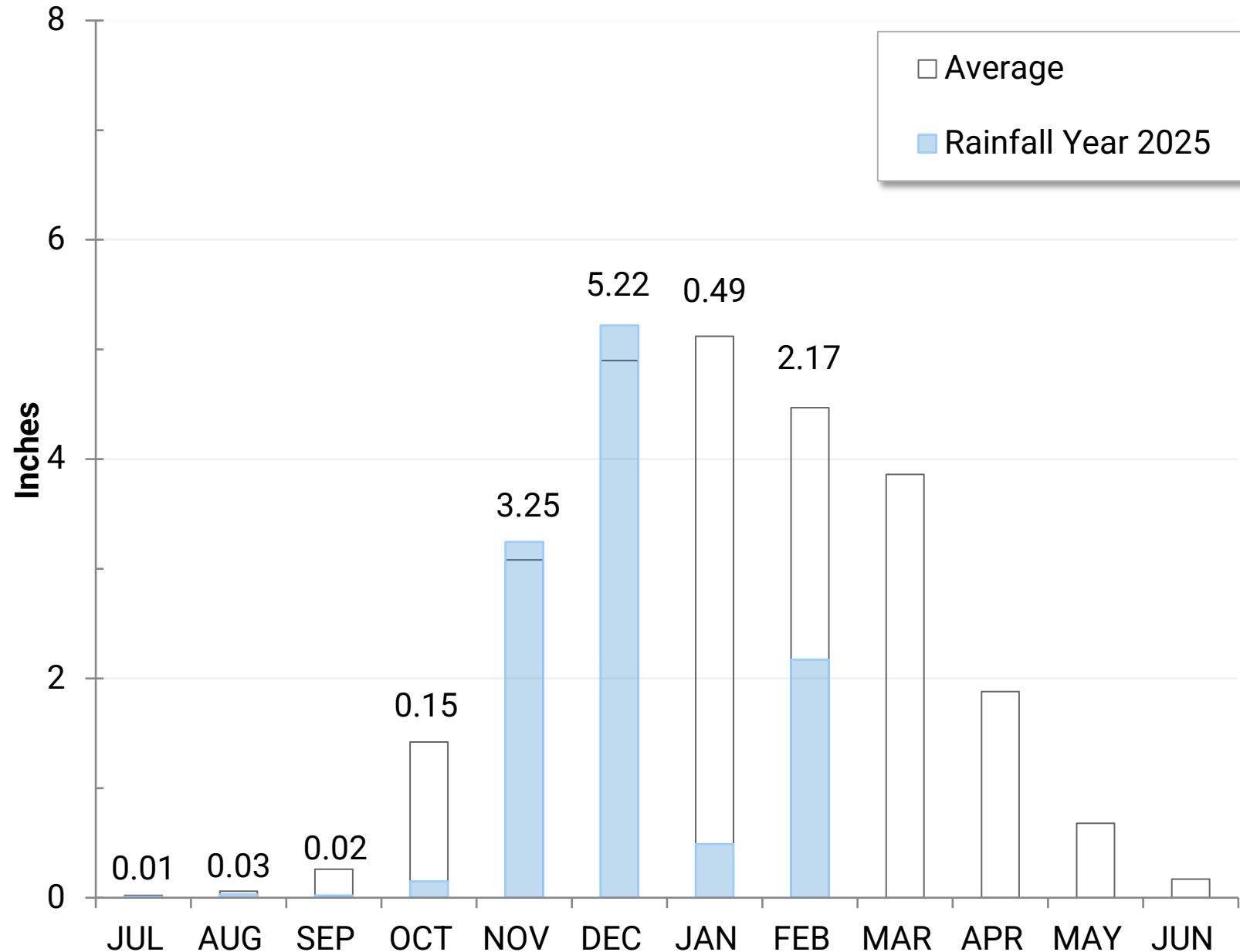
AF: Acre-Feet

# Precipitation as of February 5

East Bay: 11.3"  
(70% of average)

## Weather Station Details

- USL WTP
- Lafayette Reservoir
- Data collected since 1953

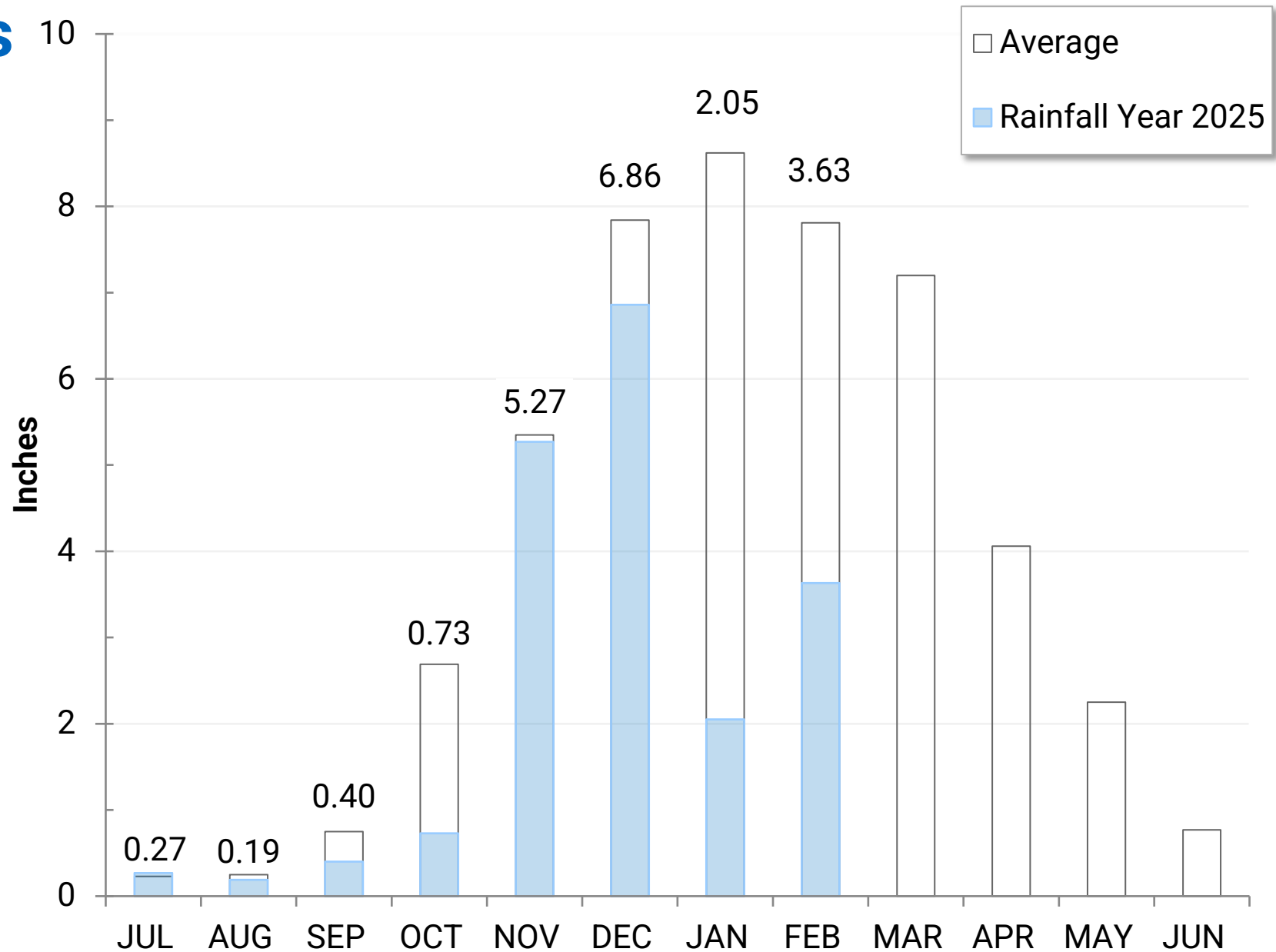


# Precipitation as of February 5

Mokelumne: 19.2"  
(70% of average)

## Weather Station Details

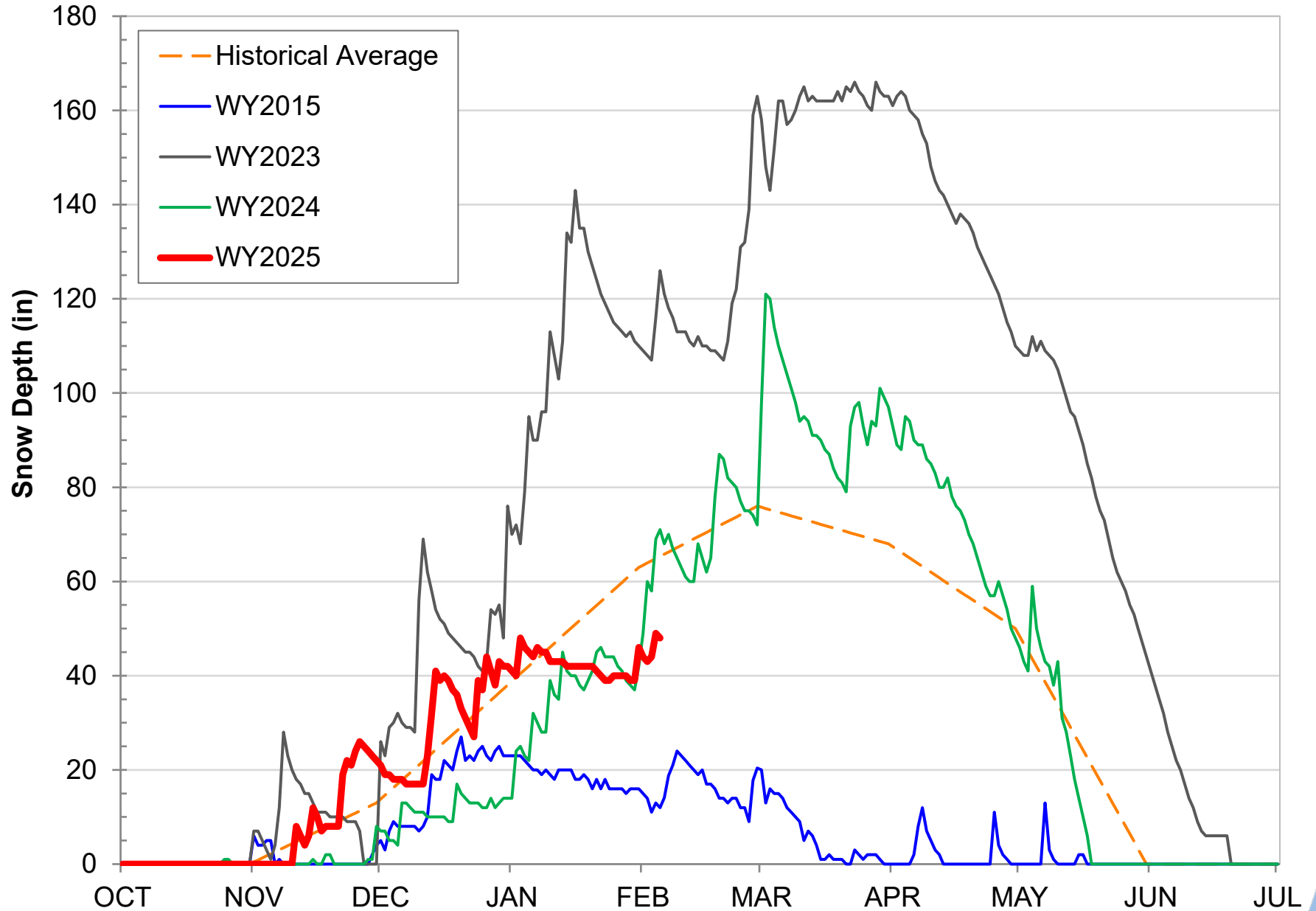
- Big Trees
- Caples Lake
- Salt Spring Reservoir
- Tiger Creek Power Station
- Data collected since 1930



# Caples Lake Snow as of February 5

Snow Depth – 48”  
(73% of average)

Snow Water  
Content – 13.4”  
(62% of average)







Caples Station, J. Toone 2024

# Snowpack as of February 6

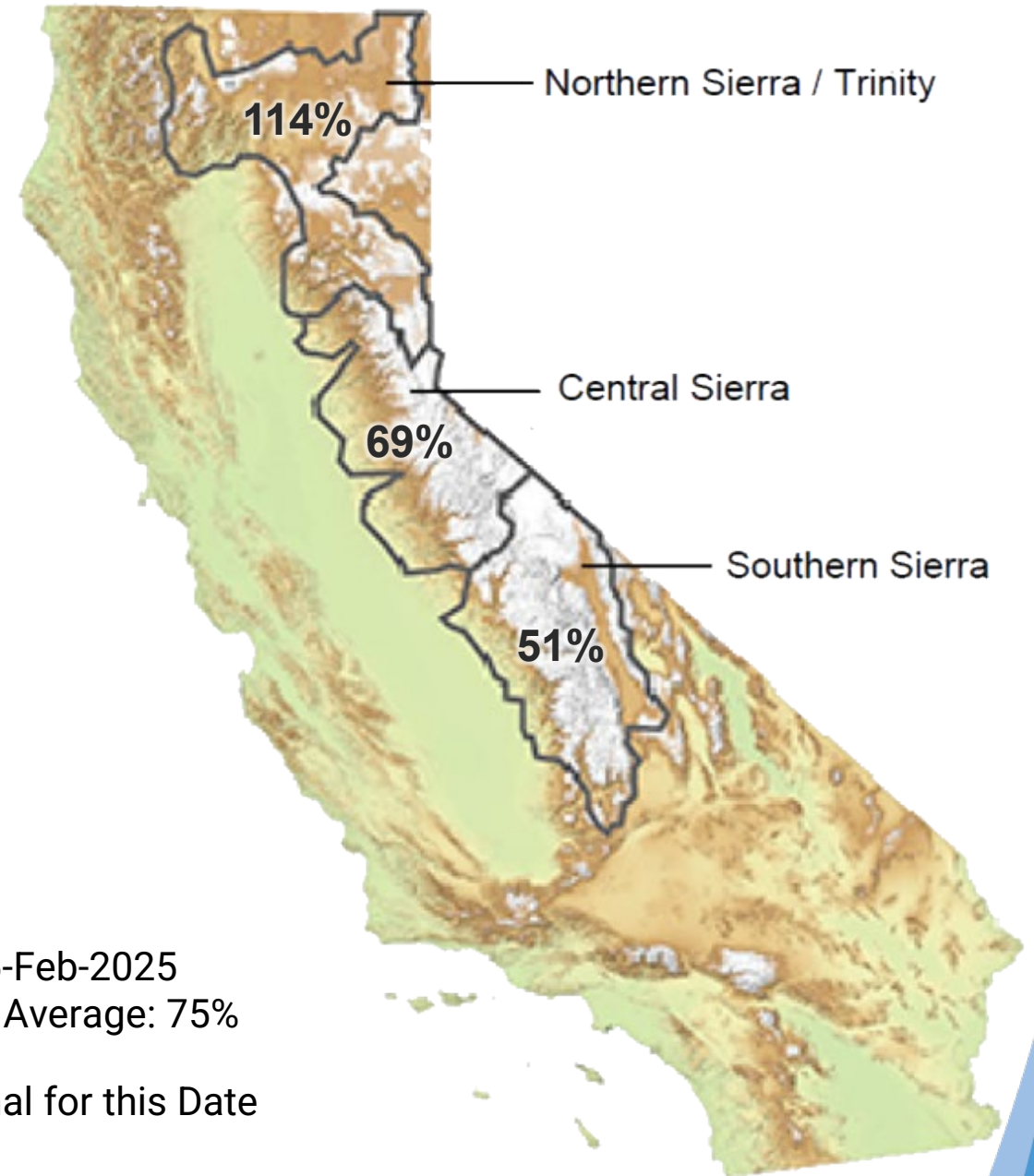
Snow Water Equivalent:

69% of Normal in Central Sierra



Data for: 6-Feb-2025  
Statewide Average: 75%

% of Normal for this Date



# Water Supply Projections

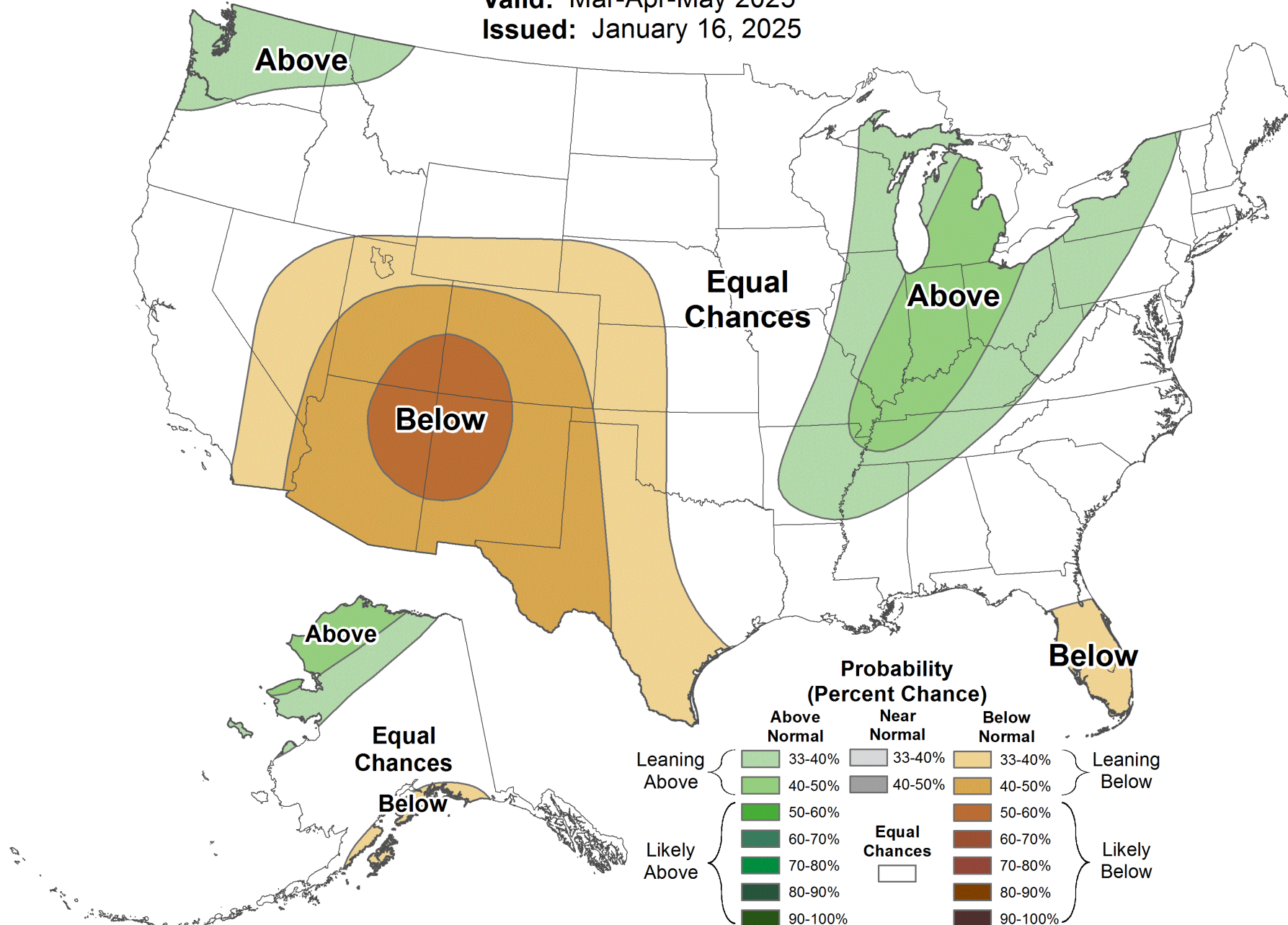
A blue-tinted landscape photograph of a reservoir. In the foreground, there is a field of white flowers. To the left, a dam is visible. The water is calm, and the sky is filled with clouds. The overall scene is serene and natural.



# Seasonal Precipitation Outlook

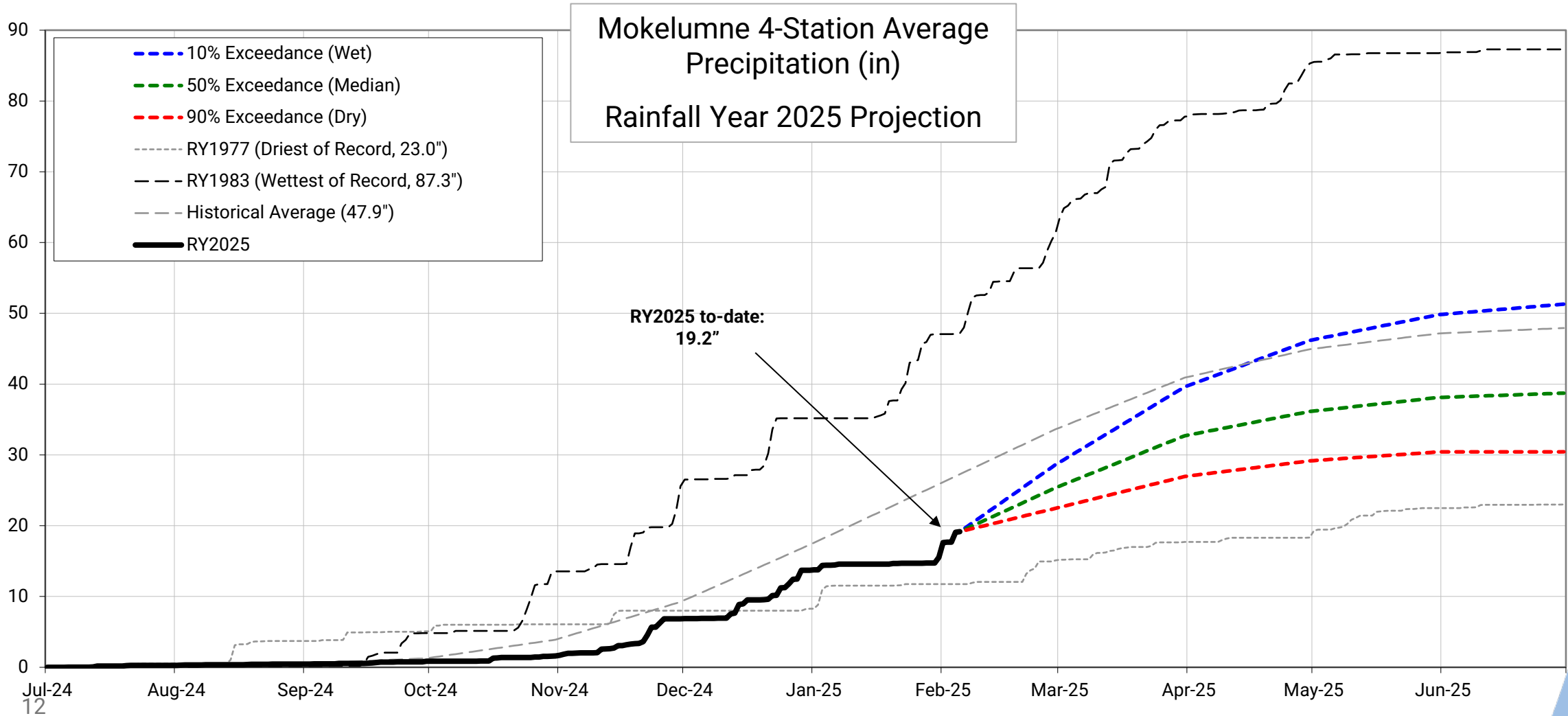


Valid: Mar-Apr-May 2025  
Issued: January 16, 2025



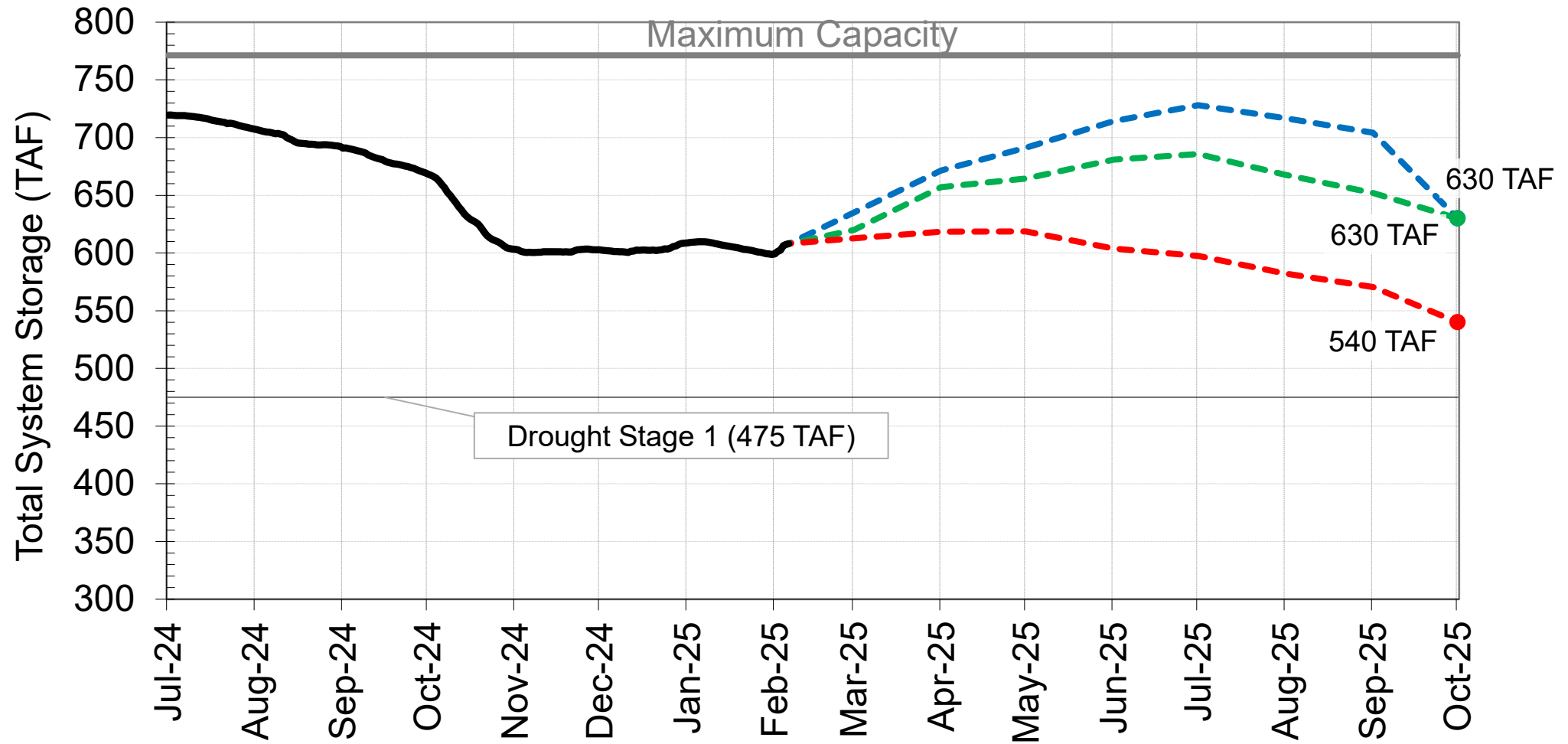
# Projected Precipitation

## Mokelumne Precipitation Rainfall Year 2025



# End of Season Storage

## 2025 Total System Storage Projections





1-18  
24412



# Questions?

# WATER SUPPLY ENGINEERING DAILY REPORT

Wednesday, February 5, 2025

## RESERVOIR STORAGE AND ELEVATION

	<u>WATER SURFACE</u>		<u>STORAGE</u>		<u>MAXIMUM CAPACITY</u>		Release	Spill
	Elevatio n	+Gain -Loss	+Gain -Loss	Elevation	Storage	Cfs		
	Feet		Ac-Ft		Feet	Ac-Ft		
<u>MOKELUMNE</u>								
Pardee	555.41	0.49	177660	1000	567.65	203795	194	0
Camanche	218.98	-0.05	302160	-320	235.5	417120	330	0
<u>EAST BAY</u>								
Briones	572.03	0.11	56110	80	576.14	58960	0	0
Chabot	225.77	0.07	9850	20	227.25	10350	0	0
Lafayette	435.68	0.06	2690	0	449.16	4250	0	0
San Pablo	293.68	0.35	23290	220	313.68	37915	0	0
Upper San Leandro	455.83	0.26	<u>35790</u>	<u>180</u>	459.98	<u>38905</u>	0	0
<u>Total East Bay Res.</u>			<u>127730</u>	<u>500</u>		<u>150380</u>		
<b>TOTAL SYSTEM STORAGE</b>			607550	1180		771295		

<b>DISTRIBUTION SYSTEM</b>		
<u>DISTRIBUTION RESERVOIRS</u>		
	Storage MG	Operating Capacity
Today	351	720
Total Previous Day	<u>369</u>	
Total Change	-18	
<u>WATER PRODUCTION AND DEMAND</u>		
	Million Gallons	Capacity MGD
Lafayette WTP	9.8	25
Orinda WTP	73	190
San Pablo WTP	0	30
Sobrante WTP	8	50
Upper San Leandro WTP	0	45
Walnut Creek WTP	15.2	90
<u>TOTAL SURFACE PRODUCTION</u>	106	430
Miscellaneous(Estimated)	0.4	
<u>TOTAL WATER PRODUCTION</u>	<u>106.4</u>	
Change in Distribution System	-18	
Wash Water from Distribution Sys.	1.1	
<u>SYSTEM DEMAND</u>		
East-of-Hills Demand	122.9	
West-of-Hills Demand	21.4	
	101.5	

<b>MOKELUMNE SYSTEM</b>			
<u>AQUEDUCT DELIVERIES</u>			
	MG	Flow Conditions	
Line 1	30.3	THROTTLE	
Line 2	48	GRAVITY	
Line 3	<u>44.2</u>	<u>THROTTLE</u>	
TOTAL	122.5	190 Cfs	
<u>FSCC to MOK AQUEDUCTS (Measured at Brandt), MG</u>			
Mok 1	0		
Mok 2	<u>0</u>		
	0 MG		
<u>RIVER FLOWS AND RELEASES</u>			
		Cfs	
Mokelumne River Natural Flow		1949	
Pardee Reservoir Inflow		894	
Pardee Release to Camanche Res.		194	
Pardee Release to JVID		0	
Camanche Release to Mokel. River		330	
<u>PG&amp;E CO. STORAGE (Acre-feet)</u>			
	Storage	Change	Maximum Capacity
Old Reservoirs	9686	411	26560
Salt Springs Res.	9359	1264	141857
Lower Bear Res.	<u>23467</u>	<u>418</u>	<u>52025</u>
Total	42512	2093	220442

	<u>RAW WATER TRANSMISSION</u>	
	Ac-ft <u>INPUT</u>	<u>DRAFT</u>
Briones Res.	39	0
San Pablo Res.	36	25
U. San Leandro Res.	0	0
<b>TOTAL</b>	75	25

<u>STATION</u>	<u>PRECIPITATION (Inches)</u>				
	<u>THIS YEAR</u>			<u>AVERAGE YEAR</u>	
	<u>Today</u>	<u>This Month</u>	<u>Season to-Date</u>	<u>Season to-Date</u>	<u>Season Total</u>
USL WTP	0	2.23	13.16	15.27	25.33
Orinda WTP	0	4.56	18.35	18.93	32.06
Lafayette Reservoir	0	2.11	9.48	16.88	28.18
Walnut Creek WTP	0	2.83	11.58	13.88	23.02
Camp Pardee	0.01	1.58	7.46	12.05	21.56
Salt Springs P.H.	0.07	2.77	17.04	25.73	45.51

**REMARKS**  
 WID Canal Diversion = 0 cfs  
 Mokelumne River below WID = 310 cfs

---

PG&E data as of 4:00 pm previous date.  
 All other data as of midnight.  
 WTP capacities are sustainable rates.

<u>CAPLES LAKE (7,830 FT) DATA</u>		
	Today	Average
Snow Depth	48 Inches	65 Inches
Water Content	13.4 Inches	21.7 Inches