

# EAST BAY MUNICIPAL UTILITY DISTRICT

## 2018 ANNUAL WATER QUALITY REPORT for January through December

EBMUD is pleased to report that in 2018 your drinking water quality was equal to or better than state and federal requirements that safeguard public health.



*Pardee Dam & Spillway*

# EBMUD SERVICE AREA



**Area served by Orinda WTP**

Crockett	+	+
Rodeo	+	+
Hercules	+	+
Pinole	+	+
El Sobrante	+	+
San Pablo	+	+
Richmond	+	+
El Cerrito	+	+
Kensington	+	+
Orinda	○	○
Moraga	○	○
Piedmont	○	○
Oakland	○	○
Alameda	○	○
San Leandro	○	○
San Lorenzo	○	○
Castro Valley	○	○
Hayward	○	○
Albany	○	○
Berkeley	○	○
Emeryville	○	○

*also served as needed by Sobrante WTP*

During times of high demand, maintenance, or for other operational needs, regions shown in more than one color or pattern may be served from a different treatment plant drawing from a different source reservoir.

**Area served by Walnut Creek WTP**

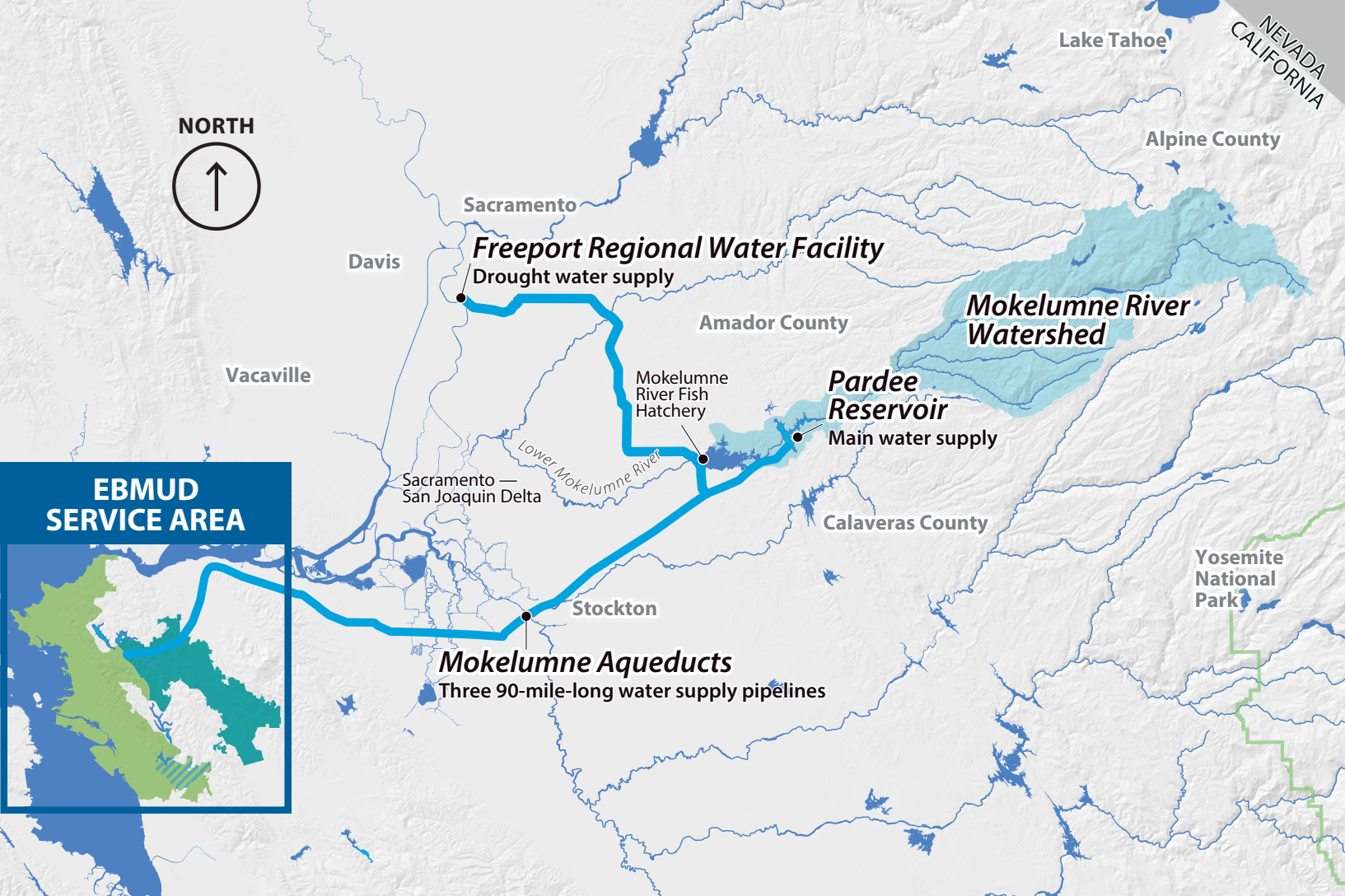
Orinda	○
Moraga	○
Lafayette	○
Pleasant Hill	○
Walnut Creek	○
Alamo	○
Danville	○
San Ramon	○
Castro Valley	○

*also served as needed by Lafayette WTP*

Water treatment plant (WTP)	Area served	Primary reservoir
Walnut Creek ●		Pardee
Lafayette ○		Pardee
Orinda ●		Pardee, Briones
Sobrante ○		San Pablo
Upper San Leandro ○		Upper San Leandro

\* San Pablo WTP is a standby plant and was not in operation during 2018

● Year-round WTPs    ○ Seasonal WTPs



## SNOWFLAKE TO THE BAY

In the East Bay, 1.4 million customers rely on high-quality EBMUD water. Almost all of EBMUD's water comes from the 577-square mile watershed of the Mokelumne River on the western slope of the Sierra Nevada. This area consists mostly of national forest, EBMUD-owned lands and other undeveloped lands little affected by human activity.

EBMUD's water system begins in the Sierra Nevada, where snowmelt from Alpine, Amador and Calaveras counties flows into Pardee Reservoir near Valley Springs. Three large aqueducts transport water 90 miles from Pardee Reservoir to every customer, hydrant and fire service in EBMUD's service area. During drought or for operational needs, EBMUD may draw water from other watersheds (like the Sacramento River) or from local watersheds in the East Bay.

EBMUD's skilled employees operate a complex network of reservoirs, pipes, pumps and water treatment plants. This infrastructure is rarely seen, but works around the clock to provide safe, reliable drinking water every day.

## HOW WE MANAGE WATER QUALITY

All water is treated at one of the EBMUD water treatment plants before it reaches your tap. These treatment plants can filter and process up to 375 million gallons of water daily. EBMUD ensures high water quality by carefully managing and protecting watershed lands and reservoirs, using best practices to treat drinking water, operating and maintaining an intricate

distribution system, and by quickly addressing customer questions or concerns.

EBMUD samples and tests your water extensively to ensure it is safe to drink. We look for more than 100 substances including microorganisms, pesticides, herbicides, asbestos, lead, copper, petroleum products and by-products of industrial and water treatment processes. More than 20,000 laboratory tests each year ensure the safety of your drinking water.

## NEW SYSTEMS FOR NEW CHALLENGES

EBMUD invests your rate dollars to efficiently provide the highest quality water.

We have completed replacement of the ozone systems at Upper San Leandro and Sobrante water treatment plants. Ozone removes traces of naturally occurring compounds that can impart taste and odor to the water.

Ozone has been used at these water treatment plants since the 1990s. These new capital improvements will improve their resilience to changes in source water with significantly improved energy efficiency.

We are upgrading all of our water treatment plants to improve performance, increase reliability, and ensure safety for staff, neighbors and the environment. It will take years to complete, but careful planning and design will ensure continued production of high quality water into the future.



Orinda Water Treatment Plant, which delivers water to 800,000 East Bay customers, received \$22 million in upgrades.

### WHERE YOUR WATER IS TREATED

Most of our water comes from the Mokelumne River watershed in the Sierra Nevada foothills. The remaining water comes from water collected in the East Bay watershed.

Before reaching your tap, EBMUD treats the water at one of the water treatment plants in the East Bay. Some customers receive water from different treatment plants at different times of the year. The taste and odor of your tap water may change throughout the year because of operational changes (such as when a treatment plant is shut down for maintenance) or due to changes in the source water.

### WHAT WAS DETECTED AND REPORTED

In 2018, EBMUD treated raw water from multiple sources and consistently provided high-quality drinking water, meeting or surpassing every public health requirement set by the State Water Resources Control Board (State Board) and the U.S. Environmental Protection Agency (USEPA).

The tables on the following pages show the measured amounts of contaminants detected in 2018 or in the most recent year sampling was required. Samples were collected in EBMUD's source waters, at water treatment plants, in the distribution system or at customers' taps.

Although EBMUD tests for more than 100 substances, this report only lists those detected at or above the state or federal level required for reporting. In this case, no news is good news!

### Table 1 – Regulated for public health

These contaminants are regulated to protect your health. They have maximum contaminant levels, known as primary MCLs, set by the State Board or the USEPA. These levels are set as close to the established public health goals as is economically and technologically feasible.

### Table 2 – Regulated for drinking water aesthetics

These contaminants are regulated to maintain aesthetic qualities such as smell, taste and appearance of drinking water. They have maximum contaminant levels, also known as secondary MCLs, set by the State Board.

### Table 3 – Unregulated contaminants

These contaminants are not currently regulated. Unregulated contaminant monitoring helps the State Board and the USEPA to determine where certain contaminants occur and whether the contaminants need to be regulated. The results under Unregulated Contaminant Monitoring Rule (UCMR3 and UCMR4) must be reported if detected. The UCMR4 is an extended list of unregulated contaminant monitoring that started in 2018 and will continue through 2019. This table also includes other contaminants that have state notification levels and water agencies are encouraged—but not required—to report results to consumers.

### Table 4 – Other parameters of interest to customers

These water measurements, such as pH, hardness and alkalinity, may be of interest to customers.

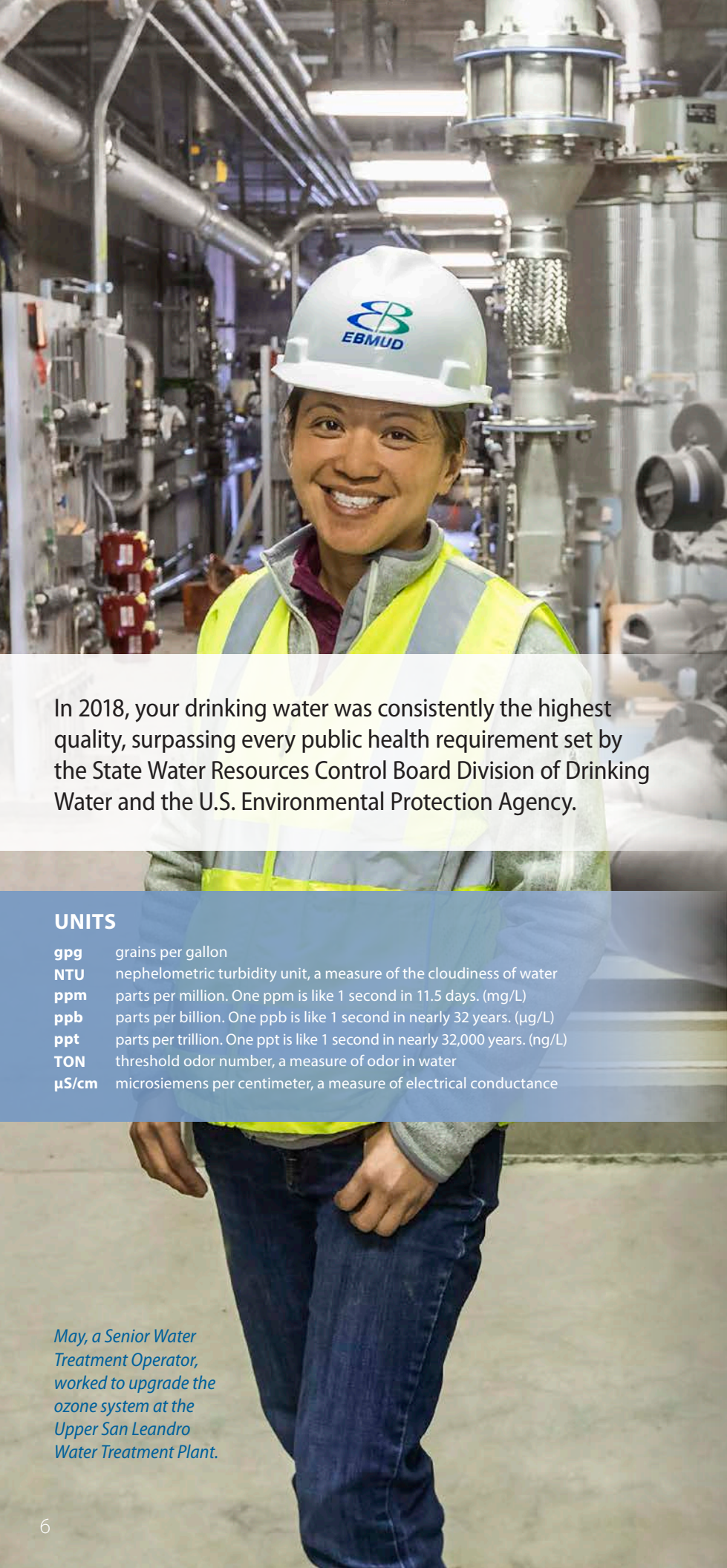
### HOW TO READ THE WATER QUALITY TABLE

Find your location on the map on page 2. Note which water treatment plant(s) serve that area.

- Go to the first column in the tables on pages 6–8 to find the contaminant you are interested in. Remember – no news is good news!
- Column two lists the state or federal goal. At that amount or lower, there is no known or expected risk to health from the contaminants' presence in drinking water. Not all listed contaminants have state or federal goals.
- Column three notes the highest amount that the State Board or the USEPA allows. This amount is usually not as low as the public health goal in column two.
- Column four lists the average amount detected across the EBMUD service area or at designated locations.
- Find the column that corresponds to the water treatment plant or plants that serve you. This is the amount of the contaminant detected in your area's water.
- The last column lists how the contaminant typically gets into your drinking water.

1		2	3	4	5					6
Regulated for public health Primary MCL (Unit)		State or federal goal PHG, MCL or MRDLG	Highest amount allowed MCL, MRDL or AL	System average	Walnut Creek	Lafayette	Orinda	Sobranite	Upper San Leandro	Typical sources
Microbiological	Total Coliform	state rule 0	5%	NA	0.3% was the highest percentage found in any month					Naturally present in the environment
		federal rule NA	TT	NA	met requirement					
	Turbidity (NTU)	NA	1	0.03	0.02 – 0.10	0.01 – 0.10	0.02 – 0.10	0.02 – 0.10	0.02 – 0.10	Soil runoff
Inorganic	Aluminum (ppb)	600	1000	<50	<50	<50 – 60	<50	<50 – 52	<50 – 55	Erosion of natural deposits; water treatment residue
	Copper (ppb)	300	1300	90 <sup>th</sup> percentile = 37	0 out of 55 sites were above the regulatory action level					Corrosion of household plumbing; erosion of natural deposits
	Fluoride in source water <sup>a</sup> (ppm)	1	2	<0.1	<0.1	<0.1	<0.1	<0.1	0.14	Erosion of natural deposits; water additive
	Lead <sup>b</sup> (ppb)	0.2	15	90 <sup>th</sup> percentile = 2.4	0 out of 55 sites was above the regulatory action level					Corrosion of household plumbing; erosion of natural deposits
	Bromate (ppb)	0.1	10	<1 <sup>c</sup>	NA	NA	NA	<1 – 3	<1.3	By-product of drinking water disinfection
Organic	Chloramine as chlorine <sup>d</sup> (ppm)	4	4	2.1 <sup>e</sup>	<0.05 – 3.2					Drinking water disinfectant added for treatment
	Control of DBP precursor – TDC	NA	TT	NA	NA	NA	NA	met requirement		Various natural and man-made sources

# EBMUD 2018 ANNUAL WATER QUALITY REPORT



In 2018, your drinking water was consistently the highest quality, surpassing every public health requirement set by the State Water Resources Control Board Division of Drinking Water and the U.S. Environmental Protection Agency.

## UNITS

- gpg** grains per gallon
- NTU** nephelometric turbidity unit, a measure of the cloudiness of water
- ppm** parts per million. One ppm is like 1 second in 11.5 days. (mg/L)
- ppb** parts per billion. One ppb is like 1 second in nearly 32 years. (µg/L)
- ppt** parts per trillion. One ppt is like 1 second in nearly 32,000 years. (ng/L)
- TON** threshold odor number, a measure of odor in water
- µS/cm** microsiemens per centimeter, a measure of electrical conductance

May, a Senior Water Treatment Operator, worked to upgrade the ozone system at the Upper San Leandro Water Treatment Plant.

1	Regulated for public health Primary MCL (Unit)		State or federal goal PHG, MCLG or MRDLG	Highest amount allowed MCL, MRDL or AL	System average	Water treatment plants					Typical sources
	Walnut Creek	Lafayette				Orinda	Sobrante	Upper San Leandro			
Microbiological	Total Coliform	state rule	0	5%	NA	0.3% was the highest percentage found in any month					Naturally present in the environment
		federal rule	NA	TT		met requirement					
Microbiological	Turbidity (NTU)		NA	1	0.03	0.02 – 0.10	0.01 – 0.10	0.02 – 0.10	0.02 – 0.10	0.02 – 0.10	Soil runoff
			NA	95% ≤ 0.3	100%	100%	100%	100%	100%	100%	
Inorganic	Aluminum (ppb)		600	1000	<50	<50	<50 – 60	<50	<50 – 52	<50 – 55	Erosion of natural deposits; water treatment residue
	Copper (ppb)		300	1300	90 <sup>th</sup> percentile = 37	0 out of 55 sites were above the regulatory action level					Corrosion of household plumbing; erosion of natural deposits
	Fluoride in source water <sup>a</sup> (ppm)		1	2	<0.1	<0.1	<0.1	<0.1	<0.1	0.1	Erosion of natural deposits; water additive
	Lead <sup>b</sup> (ppb)		0.2	15	90 <sup>th</sup> percentile = 2.4	0 out of 55 sites were above the regulatory action level					Corrosion of household plumbing; erosion of natural deposits
D/DBPs	Bromate (ppb)		0.1	10	<1 <sup>c</sup>	NA	NA	NA	<1 – 3	<1	By-product of drinking water disinfection
	Chloramine as chlorine <sup>d</sup> (ppm)		4	4	2.1 <sup>c</sup>	<0.05 – 3.4					Drinking water disinfectant added for treatment
	Control of DBP precursors – TOC		NA	TT	NA	NA	NA	NA	met requirement		Various natural and man-made sources
	Haloacetic acids, 5 species (ppb)		NA	60	47 <sup>e</sup>	11 – 36	23 – 33	23 – 46	36 – 52	21 – 52	By-product of drinking water disinfection
	Trihalomethanes (ppb)		NA	80	54 <sup>e</sup>	28 – 45	42 – 51	39 – 58	34 – 54	35 – 62	By-product of drinking water disinfection

2	Regulated for drinking water aesthetics Secondary MCL (Unit)		State or federal goal PHG or MCLG	Highest amount allowed MCL	System average	Water treatment plants					Typical sources
	Walnut Creek	Lafayette				Orinda	Sobrante	Upper San Leandro			
	Aluminum (ppb)		NA	200	<50	<50	<50 – 60	<50	<50 – 52	<50 – 55	Erosion of natural deposits; water treatment residue
	Chloride (ppm)		NA	250	6	4 – 5	4 – 5	4 – 8	8 – 15	16 – 19	Runoff/leaching from natural deposits
	Color (color units)		NA	15	4	6	3	3	2	1	Naturally-occurring organic materials
	Manganese (ppb)		500 <sup>f</sup>	50	<20	<20	<20	<20	<20 – 41	<20	Leaching from natural deposits
	Odor (TON)		NA	3	<1	<1	<1	<1	1	1	Naturally-occurring organic materials
	Specific conductance (µS/cm)		NA	900	125	66	63	65-163	237	379	Substances that form ions when in water
	Sulfate (ppm)		NA	250	9	1	1	1 – 20	25 – 29	47 – 52	Runoff/leaching from natural deposits
	Total dissolved solids (ppm)		NA	500	72	37 – 50	37 – 50	33 – 110	140 – 160	230 – 240	Runoff/leaching from natural deposits
	Turbidity (NTU)		NA	5	0.03	0.02 – 0.10	0.01 – 0.10	0.02 – 0.10	0.02 – 0.10	0.02 – 0.10	Soil runoff

## KEY TERMS

- AL** Regulatory action level. The concentration which, if exceeded, triggers treatment or other requirements that a water system must follow.
- DBP** Disinfection by-products. These are formed when chlorine and/or ozone reacts with natural constituents in water. Trihalomethanes (THMs), haloacetic acids (HAAs), chlorate, and bromate are disinfection by-products.
- D/DBPs** Disinfection by-products, disinfection residuals and disinfection by-product precursors.
- MCL** Maximum contaminant level. The highest level of a contaminant that is allowed in drinking water. Primary MCLs are set as close to the PHGs or MCLGs as is economically and technologically feasible. Secondary MCLs address odor, taste and appearance of drinking water.
- MCLG** Maximum contaminant level goal. The level of a contaminant in drinking water below which there is no known or expected risk to health. MCLGs are set by the USEPA.
- MRDL** Maximum residual disinfectant level. The highest level of a disinfectant allowed in drinking water. There is convincing evidence that addition of a disinfectant is necessary for control of microbial contaminants.
- MRDLG** Maximum residual disinfectant level goal. The level of a drinking water disinfectant below which there is no known or expected risk to health. MRDLGs do not reflect the benefits of the use of disinfectants to control microbial contaminants.
- NA** Not applicable.
- primary drinking water standard** These standards regulate contaminants that affect health by setting MCLs, MRDLs, and treatment techniques (TT) along with their monitoring and reporting requirements.
- PHG** Public health goal. The level of a contaminant in drinking water below which there is no known or expected risk to health. PHGs are set by the California EPA.
- TOC** Total organic carbon. A measure of organic content in the water.
- turbidity** A measure of the cloudiness of water. Turbidity is monitored because it is a good indication of the effectiveness of our filtration systems.
- TT** Treatment technique. A required process intended to reduce the level of a contaminant in drinking water.
- 90th percentile** A measure that indicates 90 percent of the samples had a lower result.

## NOTES

**a)** See page 11 for additional information about fluoride in drinking water. **b)** 135 schools requested lead sampling. See Page 10 for additional information about lead in drinking water. **c)** Highest running annual average. **d)** Chloramine residuals in the distribution system are measured as an equivalent quantity of chlorine. When the chloramine residual cannot be detected, the sample is further analyzed to ensure that microbiological water quality is in compliance with regulations. **e)** Compliance is determined based on the highest locational running annual average results. Water treatment plant values show the range of individual sample results. **f)** Parameters with a notification level.



3	Unregulated contaminants No established MCL (Unit)	Year sampled	State NL	System average	Water treatment plants				Upper San Leandro
					Walnut Creek	Lafayette	Orinda	Sobrante	
UCMR3	Chlorate (ppb)	2013-2015	800	174	91 – 220	84 – 210	68 – 160	100 – 290	84 – 480
	Chromium, hexavalent (ppb)	2013-2015	NA	0.05	0.04 – 0.07	0.03 – 0.06	<0.03 – 0.06	0.03 – 0.09	<0.03 – 0.22
	Molybdenum (ppb)	2013-2015	NA	<1	<1	<1	<1	<1 – 1	<1 – 1
	Strontium (ppb)	2013-2015	NA	97	31 – 44	35 – 100	32 – 110	52 – 190	44 – 320
	Vanadium (ppb)	2013-2015	50	0.7	0.3 – 0.4	0.2 – 0.4	0.2 – 0.4	0.4 – 1.9	0.3 – 2.4
UCMR4	Bromide (ppb)	2018	NA	9	<5	<5	<5 – 16	22 – 26	35 – 41
	Haloacetic acids, 5 species (ppb)	2018	NA	36	24 – 40	30 – 37	26 – 46	39 – 58	26 – 57
	Haloacetic acids, 9 species (ppb)	2018	NA	38	25 – 41	30 – 37	28 – 47	42 – 66	26 – 68
	Haloacetic acids, 6 brominated species (ppb)	2018	NA	2	0.3 – 2	0.4 – 1	0.4 – 2	3 – 10	1 – 12
	Manganese (ppb)	2018	500	1	<0.4	<0.4	<0.4	0.4 – 1.3	2
	TOC (ppm)	2018	NA	2.6	1.5 – 2.3	1.5 – 2.3	1.5 – 3	3.8 – 5.5	5.5 – 7.2
Others <sup>f</sup>	Boron (ppb)	2018	1000	<100	<100	<100	<100	<100	127
	Chlorate (ppb)	2018	800	146	81	210	140 – 210	69 – 290	65 – 150
	N-Nitrosodimethylamine (NDMA) (ppt)	2018	10	<1	<1 – 2	<1 – 3	<1 – 2	2 – 13	<1 – 1

4	Other parameters of interest to customers (Unit)	Water treatment plants				Upper San Leandro	
		Walnut Creek	Lafayette	Orinda	Sobrante		
	Alkalinity, Total as CaCO <sub>3</sub> (ppm)	21 – 33	24 – 34	21 – 53	70 – 84	130 – 140	
	Calcium (ppm)	4 – 6	5	4 – 15	17 – 21	30 – 32	
	Hardness as CaCO <sub>3</sub>	(gpg <sup>g</sup> )	1	1	1 – 3	4 – 5	8
		(ppm)	16 – 21	18 – 20	16 – 54	68 – 82	140
	Magnesium (ppm)	1	1	1 – 4	6 – 7	13	
	pH (pH)	9.3	9.2 – 9.4	9.0 – 9.4	8.0 – 9.0	8.4 – 8.6	
	Potassium (ppm)	<1	<1	<1 – 1	1	2	
	Silica (ppm)	8 – 11	8 – 11	7 – 10	8 – 12	8 – 10	
	Sodium (ppm)	5 – 6	6	5 – 16	19 – 24	26 – 30	

### KEY TERMS

**NL** Notification level. A health-based advisory level established by the State Board for contaminants in drinking water that lack MCLs.

**UCMR** The federal unregulated contaminant monitoring rule parts 3 and 4.

### NOTES

**f)** Parameters with a notification level.  
**g)** Grains per gallon (gpg) is a measure of water hardness. Knowing the amount can help improve the function of dishwashers, cooling equipment and other industrial processes. Refer to your appliance manufacturer's instruction manual for the optimum grains per gallon level.

### WATER QUALITY REGULATIONS

This report reflects changes in drinking water regulatory requirements during 2018. To ensure that tap water is safe to drink, the State Board and the USEPA prescribe regulations that limit the amount of certain contaminants in water provided by public water systems. California Department of Public Health (CDPH) and United States Food and Drug Administration regulations establish limits for contaminants in bottled water that provide the same protection for public health. Additional information on bottled water is available on the CDPH website at [www.cdph.ca.gov/Programs/CEH/DFDCS/Pages/FDBPrograms/FoodSafetyProgram/Water.aspx](http://www.cdph.ca.gov/Programs/CEH/DFDCS/Pages/FDBPrograms/FoodSafetyProgram/Water.aspx).

The sources of drinking water (both tap water and bottled water) include rivers, lakes, streams, ponds, reservoirs, springs and wells. As water travels over the surface of the land or through the ground, it dissolves naturally-occurring minerals and, in some cases, radioactive material, and can pick up substances resulting from the presence of animals or from human activity.

Contaminants that may be present in source water include:

**Microbial contaminants**, such as viruses, bacteria and protozoa, such as *Cryptosporidium*, that may come from sewage treatment plants, septic systems, agricultural livestock operations and wildlife.

**Inorganic contaminants**, such as salts and metals, that can be naturally-occurring or result from urban stormwater runoff, industrial or domestic wastewater discharges, oil and gas production, mining or farming.

**Pesticides and herbicides** that may come from a variety of sources, such as agriculture, urban stormwater runoff and residential uses.

**Organic chemical contaminants**, including synthetic and volatile organic chemicals, that are by-products of industrial processes and petroleum production and can also come from gas stations, urban stormwater runoff, agricultural application and septic systems.

**Radioactive contaminants** that can be naturally occurring or be the result of oil and gas production and mining activities.

Drinking water, including bottled water, may reasonably be expected to contain at least small amounts of some contaminants. The presence of contaminants does not necessarily indicate that water poses a health risk. More information about contaminants and potential health effects is available online at [www.epa.gov/ground-water-and-drinking-water](http://www.epa.gov/ground-water-and-drinking-water). Contact your healthcare provider or visit the Centers for Disease Control and Prevention (CDC) website for guidelines on using tap water for health or medical purposes.

### Vulnerable populations

Some people may be more vulnerable to contaminants in drinking water than the general population. Immuno-compromised persons such as persons with cancer undergoing chemotherapy, persons who have undergone organ transplants, people with HIV/AIDS or other immune system disorders, some elderly and some infants can be particularly at risk from infections.

These people should seek advice about drinking water from their health care providers. USEPA/CDC guidelines on appropriate means to lessen the risk of infection by *Cryptosporidium* and other microbial contaminants are available online at [www.cdc.gov/parasites/crypto/index.html](http://www.cdc.gov/parasites/crypto/index.html).

### Cryptosporidium and Giardia

*Cryptosporidium* is a microbial contaminant found in surface water throughout the United States. Although filtration is highly effective in removing *Cryptosporidium*, the most commonly used filtration methods cannot guarantee 100 percent removal. In 2018 our monitoring detected *Cryptosporidium* in our source water.

*Cryptosporidium* must be ingested to cause disease, and it may be spread through means other than drinking water. Most healthy individuals can overcome the disease within a few weeks. However, immuno-compromised people, infants and small children, and the elderly are at greater risk of developing life-threatening illness. We encourage these individuals to consult their physician regarding appropriate precautions to take to avoid infection.

*Giardia* is a microbial contaminant that is naturally present in the environment. Our monitoring detected one *Giardia* in one sample of our source water.

Photo: Briones Reservoir in Orinda

### Disinfection Byproducts

Chlorine is used to kill pathogens in drinking water to protect public health. However, chlorine also reacts with naturally-occurring organic compounds to form unwanted disinfection byproducts. Disinfection byproducts are present in all chlorinated drinking water.

EBMUD continues to invest in long-term projects to provide more water treatment flexibility and reliability. We are making improvements to the disinfection systems at water treatment plants to ensure continued compliance with the disinfection requirements while minimizing formation of byproducts.

### Water quality improvement projects

EBMUD is designing a project for the San Pablo Reservoir to improve water quality by adding oxygen to the bottom of the reservoir. This will prevent release of nutrients and metals from the sediments, discouraging the growth of algae and improving water quality. Other upcoming improvements include new disinfection tanks at the water treatment plants, improvements to our chemical storage and handling facilities, and new clarification basins to enable greater removal of particles in the water. These large capital projects will modernize the treatment plants, improve worker and environmental safety, and improve our capability to treat challenging source waters.

### REPORT A WATER QUALITY CONCERN

Do you have a question or concern about your water quality? Call 866-403-2683. EBMUD inspectors respond to calls within one business day regarding water which appears dirty, colored, has foreign particles or unusual taste or odor.

### Lead in drinking water

If present, elevated levels of lead can cause serious health problems. Pregnant women, infants and young children are typically more vulnerable to lead in drinking water than the general population.

Lead in drinking water is primarily from materials and components associated with lead in water distribution pipes and home plumbing. EBMUD replaced all known lead service pipes in its service area in the 1990s and continues to actively seek and replace lead materials wherever they are found. We maintain an aggressive corrosion control program to reduce lead leaching from our water mains and customer piping. Still, it is possible that lead may be present as a result of materials used in your home's plumbing. According to the USEPA, homes built before 1986 are more likely to have lead pipes or fixtures and solder that contain lead.



Sierra snowmelt makes up 90 percent of EBMUD's water. In the East Bay, we can confidently drink straight from the sink.



Elzie, a Water System Inspector, takes water samples as part of EBMUD's program to sample lead in schools. This program helps schools to ensure that the water at drinking fountains does not contain lead.

If you suspect you have lead in your fixtures and if your water has been sitting for several hours, you can minimize the potential for lead exposure by running your faucet for 30 seconds to 2 minutes before using water for drinking or cooking. Capture and reuse this water for other uses such as watering ornamental plants.

EBMUD samples and tests your water in accordance with all state and federal drinking water requirements, and will provide a list of results upon request. If you are concerned about elevated lead levels in your home's water, you may wish to have your water tested. In 2017, EBMUD started a new program to provide our customers with free lead testing for their water. Request a voucher by calling Customer Service at 866-403-2683 or email [customerservice@ebmud.com](mailto:customerservice@ebmud.com) for more information.

### Lead testing in schools

In 2018, EBMUD received lead sampling requests from 135 schools (preschools through 12th grade). During 2017-2018, 452 schools in the EBMUD service area were sampled for lead. All public schools and roughly 30 percent of the private schools have reported lead sampling results to the State Board as part of EBMUD's lead sampling program. Lead sampling information and results can be found on the State Board website at [www.waterboards.ca.gov/drinking\\_water/certlic/drinkingwater/leadsamplinginschools.html](http://www.waterboards.ca.gov/drinking_water/certlic/drinkingwater/leadsamplinginschools.html). Per state requirements, the deadline for school lead sampling requests is November 1, 2019.

Information on lead in drinking water, testing methods and steps you can take to minimize lead exposure is available at [www.ebmud.com/lead](http://www.ebmud.com/lead) and from the USEPA at [www.epa.gov/lead](http://www.epa.gov/lead).

### Fluoridation

EBMUD is required by state law to add fluoride to drinking water to help prevent dental decay in consumers. Current regulations require fluoride levels in the treated water be maintained between 0.6 to 1.2 ppm with an optimum dose of 0.7 ppm. Our monitoring showed that fluoride levels in the treated water distribution system averaged 0.7 ppm.

According to the American Dental Association and CDC, it is safe to use optimally fluoridated water for preparing infant formula. If an infant is primarily fed infant formula prepared with fluoridated water, there may be an increased chance for mild enamel fluorosis, but enamel fluorosis does not affect the health of the infant or the health of the infant's teeth. To lessen this chance, deionized, purified, distilled or demineralized bottled water can be used.

If you have additional questions about fluoride, contact your health provider. Additional information can be found at [www.waterboards.ca.gov/drinking\\_water/certlic/drinkingwater/Fluoridation.shtml](http://www.waterboards.ca.gov/drinking_water/certlic/drinkingwater/Fluoridation.shtml) or [www.cdc.gov/fluoridation](http://www.cdc.gov/fluoridation) websites.

## HOW TO CONTACT EBMUD

For more information about water quality or to report a water quality concern, call 866-403-2683 or visit [www.ebmud.com/waterquality](http://www.ebmud.com/waterquality).

If you would like this report mailed to you, email [customerservice@ebmud.com](mailto:customerservice@ebmud.com) or call 510-986-7555. View this report online at [www.ebmud.com/wqr](http://www.ebmud.com/wqr).

EBMUD encourages public participation in decisions affecting drinking water quality and other matters at its Board of Directors meeting held the second and fourth Tuesdays of each month at 1:15 pm, 375 Eleventh Street, 2nd Floor, Oakland.

EBMUD has a seven-member Board of Directors publicly elected from wards within the EBMUD service area. See [www.ebmud.com/board](http://www.ebmud.com/board).

**General Manager**  
Alexander R. Coate

## ADDITIONAL CONTACTS

State Water Resources Control Board  
Division of Drinking Water • 510-620-3463

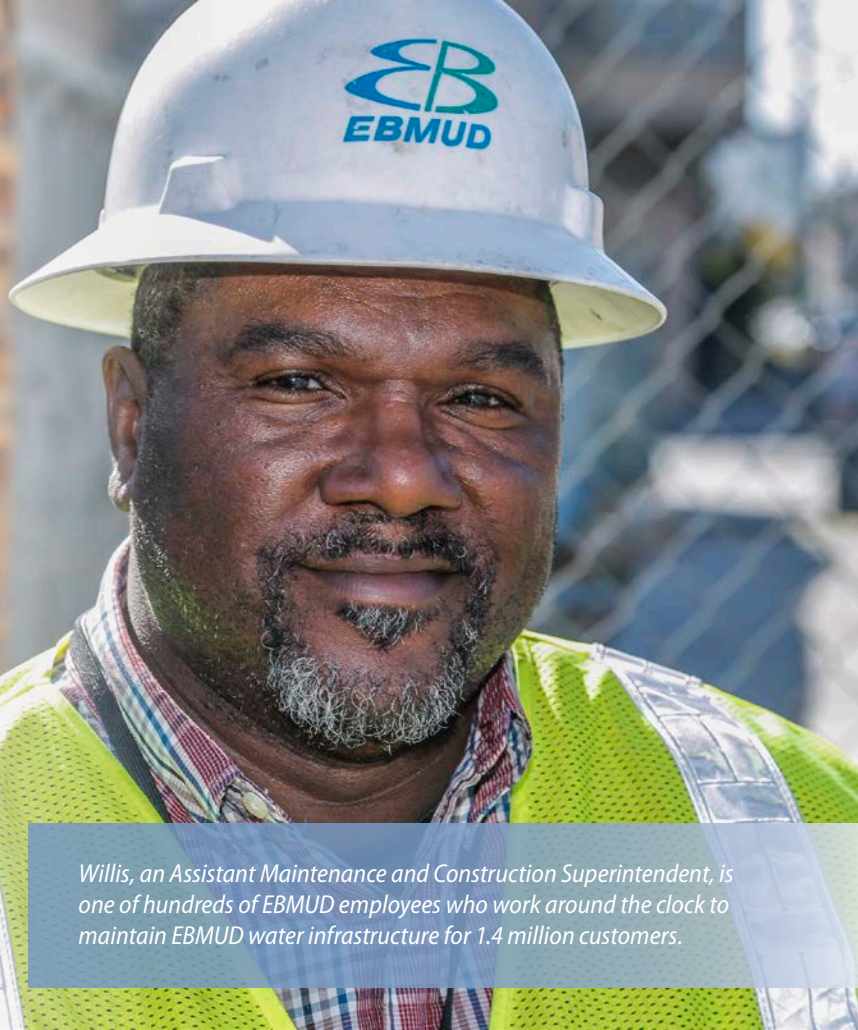
Alameda Public Health Department • 510-267-8000

Contra Costa Public Health Division • 925-313-6712



375 Eleventh Street  
Oakland, CA 94607  
1-866-40-EBMUD  
[www.ebmud.com](http://www.ebmud.com)

PUB. 146 5/19 2M 30% Post-consumer waste



*Willis, an Assistant Maintenance and Construction Superintendent, is one of hundreds of EBMUD employees who work around the clock to maintain EBMUD water infrastructure for 1.4 million customers.*

This is important information about your drinking water. Translate it, or speak with someone who understands it.

Este documento contiene información importante sobre el agua potable que usted consume. Tradúzcalo o hable con alguien que lo entienda.

這是有關您飲用水的重要資訊。請翻譯資訊，或與瞭解其內容的人討論。

Ito ay isang mahalagang impormasyon tungkol sa inyong iniinom na tubig. Isaling-wika ito, o makipag-usap sa isang tao na naiintindihan ito.

Đây là thông tin quan trọng về nước uống của quý vị. Hãy chuyển ngữ tài liệu này, hoặc nói chuyện với người có thể hiểu về thông tin này.

여러분의 식수에 대한 중요한 정보입니다. 본 안내문을 번역하거나 내용을 이해하는 사람과 이야기하십시오.

این متن حاوی اطلاعات مهمی درباره آب آشامیدنی شما است. آن را ترجمه کرده یا با فردی که آن را متوجه می شود صحبت کنید.

Ce sont des renseignements importants concernant votre eau potable. Traduisez-les ou parlez-en avec quelqu'un en mesure de les comprendre.

यह महत्वपूर्ण जानकारी आपके पीने के पानी के बारे में है। इसका अनुवाद करें, या किसी ऐसे व्यक्ति से बात करें जो इसे समझता हो।

هذه معلومات هامة حول مياه الشرب التي تتناولها. ترجمها، أو تحدث إلى شخص يستطيع فهمها.

Здесь представлена важная информация о качестве вашей питьевой воды. Переведите эту информацию или попросите человека, знающего английский язык, пересказать ее вам.

これは、あなたの飲料水に関する重要な情報です。翻訳するか、理解できる方にご相談ください。

Dies ist eine wichtige Information zu Ihrem Trinkwasser. Übersetzen Sie sie oder sprechen Sie mit jemandem, der die Information versteht.

Este documento contém informações importantes sobre a sua água para consumo. Traduza-o ou fale com alguém que o compreenda.

Queste sono informazioni importanti sulla vostra acqua potabile. Fatele tradurre o parlate con qualcuno in grado di comprenderle.

ນີ້ແມ່ນຂໍ້ມູນສໍາຄັນກ່ຽວກັບນໍ້າດື່ມຂອງທ່ານ. ແປຂໍ້ມູນນີ້, ຫຼື ລົມກັບບາງຄົນທີ່ເຂົ້າໃຈຂໍ້ມູນນີ້.

នេះគឺជាព័ត៌មានសំខាន់ អំពីទឹកផឹករបស់អ្នក។ សូមអ្នកផ្ញើប្រាប់ប្តីប្រពន្ធ ឬពិគ្រោះជាមួយនឹងអ្នកណាដែលយល់វា។

یہ آپ کے پینے کے پانی کے بارے میں اہم معلومات ہے۔ اس کا ترجمہ کریں، یا اسے سمجھنے والے کسی شخص سے بات کریں۔

ຂ້ອມູນນີ້ເປັນຂ້ອມູນສໍາຄັນເຖິງກັບນໍ້າດື່ມຂອງທ່ານ. ຂໍໃຫ້ແປຂ້ອມູນນີ້ຫຼືອາທິດກັບຜູ້ທີ່ເຂົ້າໃຈຂ້ອມູນ.

מדובר על מידע חשוב בנוגע למי השתייה שלך. תרגם את זה או שתפנה לאדם המבין את זה.

Ovo je važna informacija o pijaćoj vodi. Prevedite je, ili razgovarajte s nekim ko je razume.

Οι παρούσες είναι σημαντικές πληροφορίες σχετικά με το νερό που πίνετε. Μεταφράστε τις ή μιλήστε με κάποιον που τις καταλαβαίνει.

આ તમારા પીવાના પાણી વિશે મહત્વની માહિતી છે. તેનું ભાષાંતર કરો અથવા કોઈક એવી વ્યક્તિ સાથે વાત કરો જે તેને સમજતી હોય.