

Wildcat Pipeline Improvement Berkeley

Community Meeting

April 28, 2020

Agenda

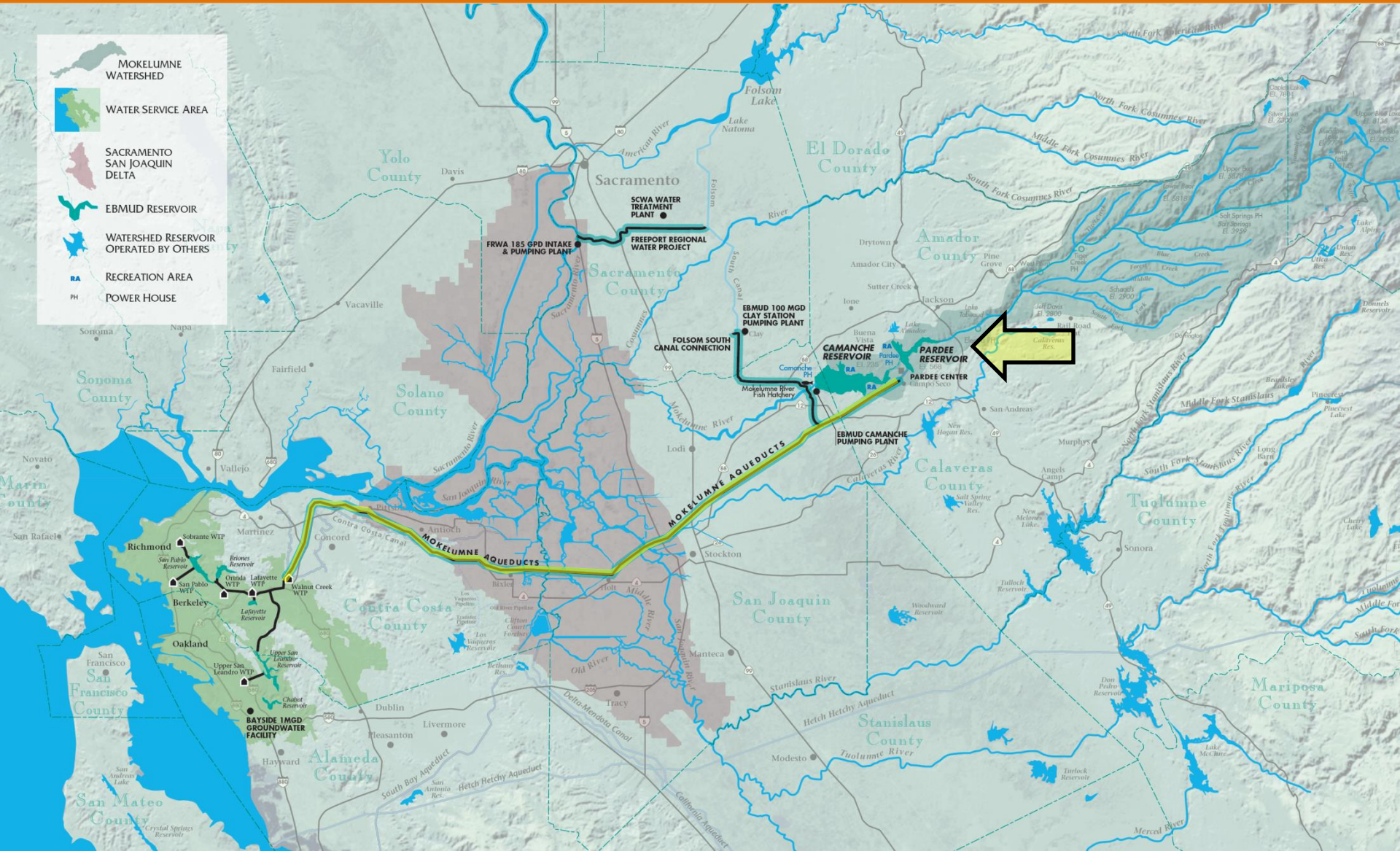


- EBMUD overview
- Project background
- Construction schedule
- Pipeline construction process
- Mitigations
 - Noise
 - Trees and landscaping
 - Traffic control and parking
 - Paving
- Questions

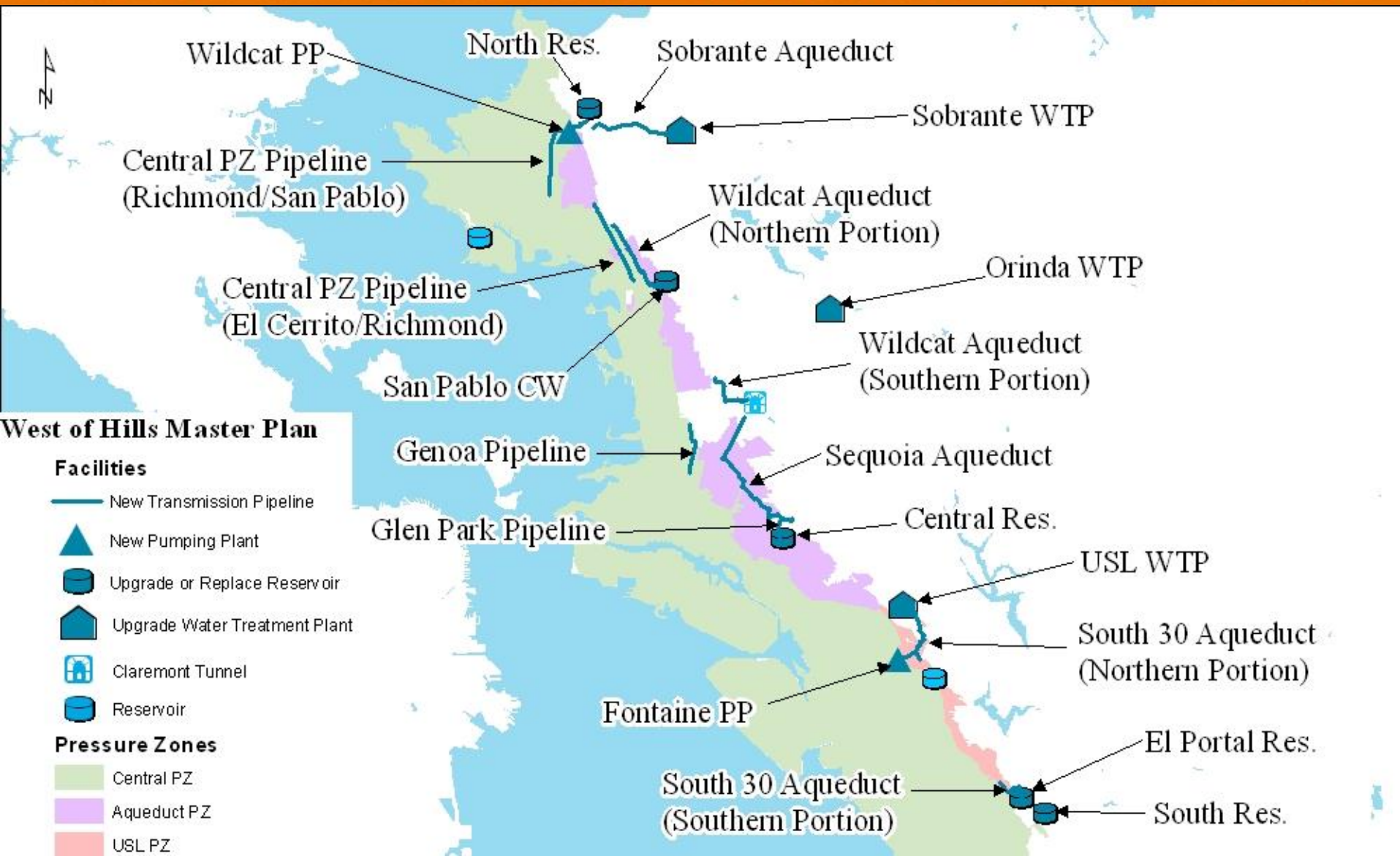
EBMUD Water System



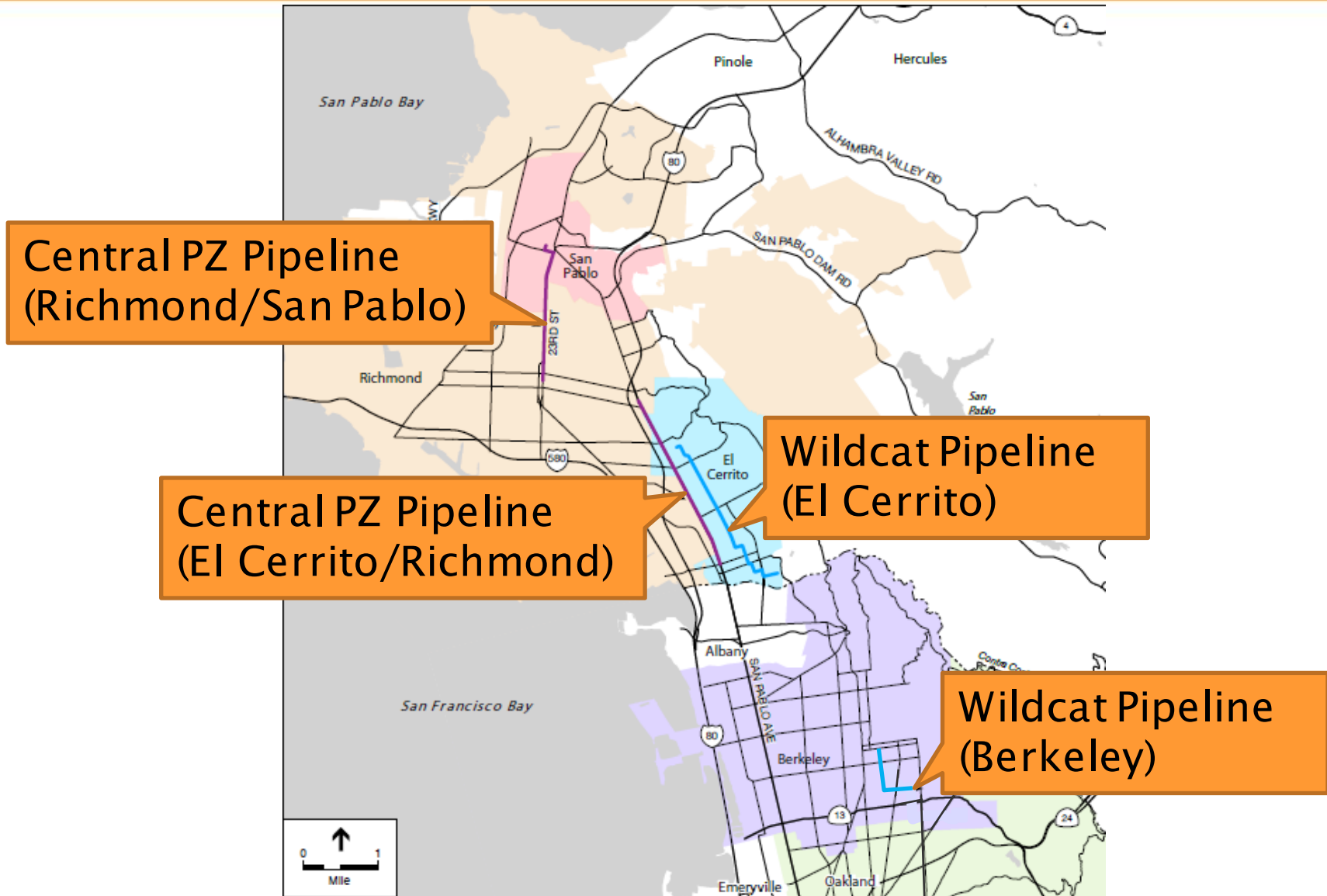
- MOKELUMNE WATERSHED
- WATER SERVICE AREA
- SACRAMENTO SAN JOAQUIN DELTA
- EBMUD RESERVOIR
- WATERSHED RESERVOIR OPERATED BY OTHERS
- RECREATION AREA
- POWER HOUSE



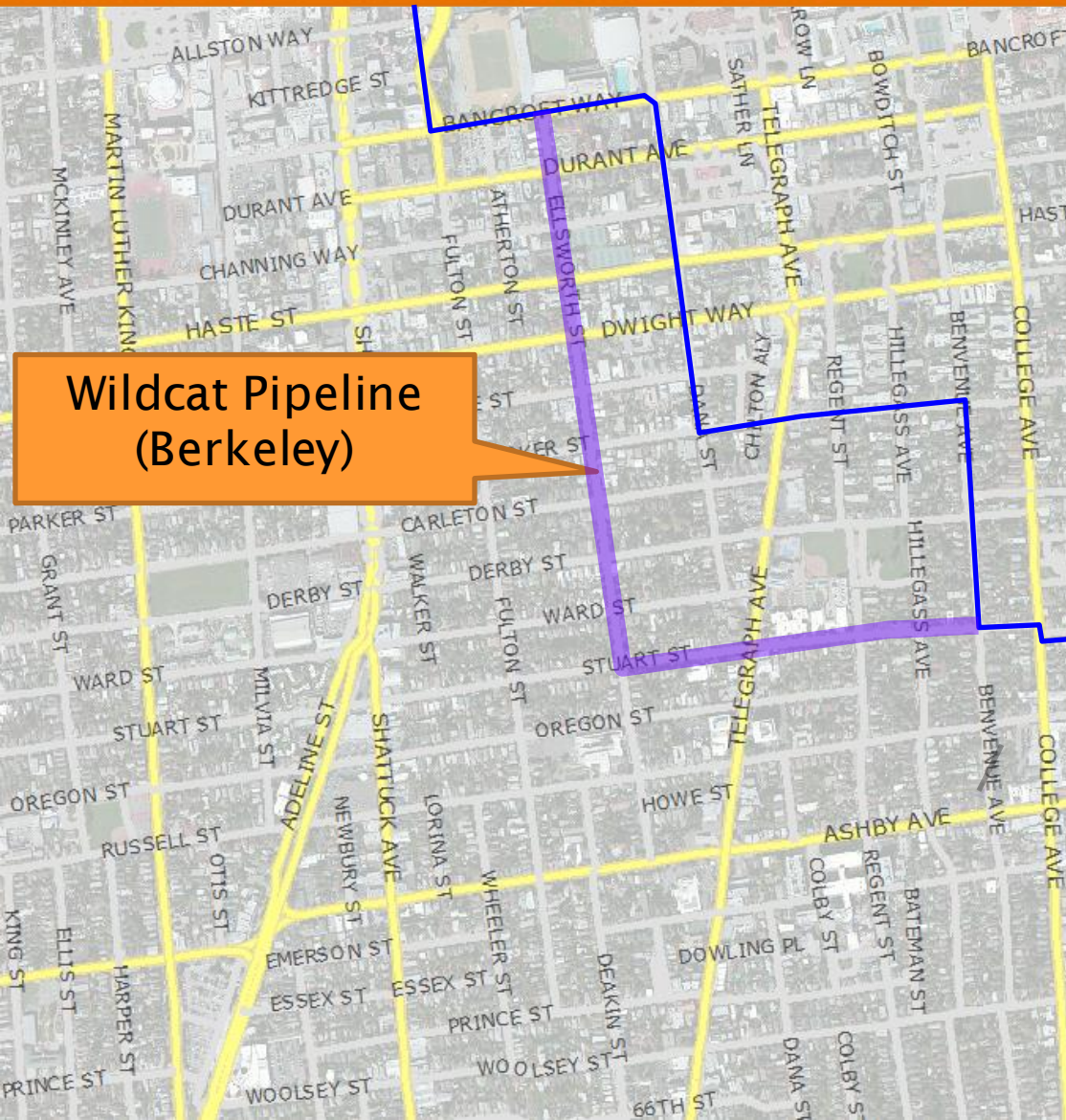
West of Hills (WOH) Master Plan



WOH Northern Pipelines Project



Project Scope



**Wildcat Pipeline
(Berkeley)**

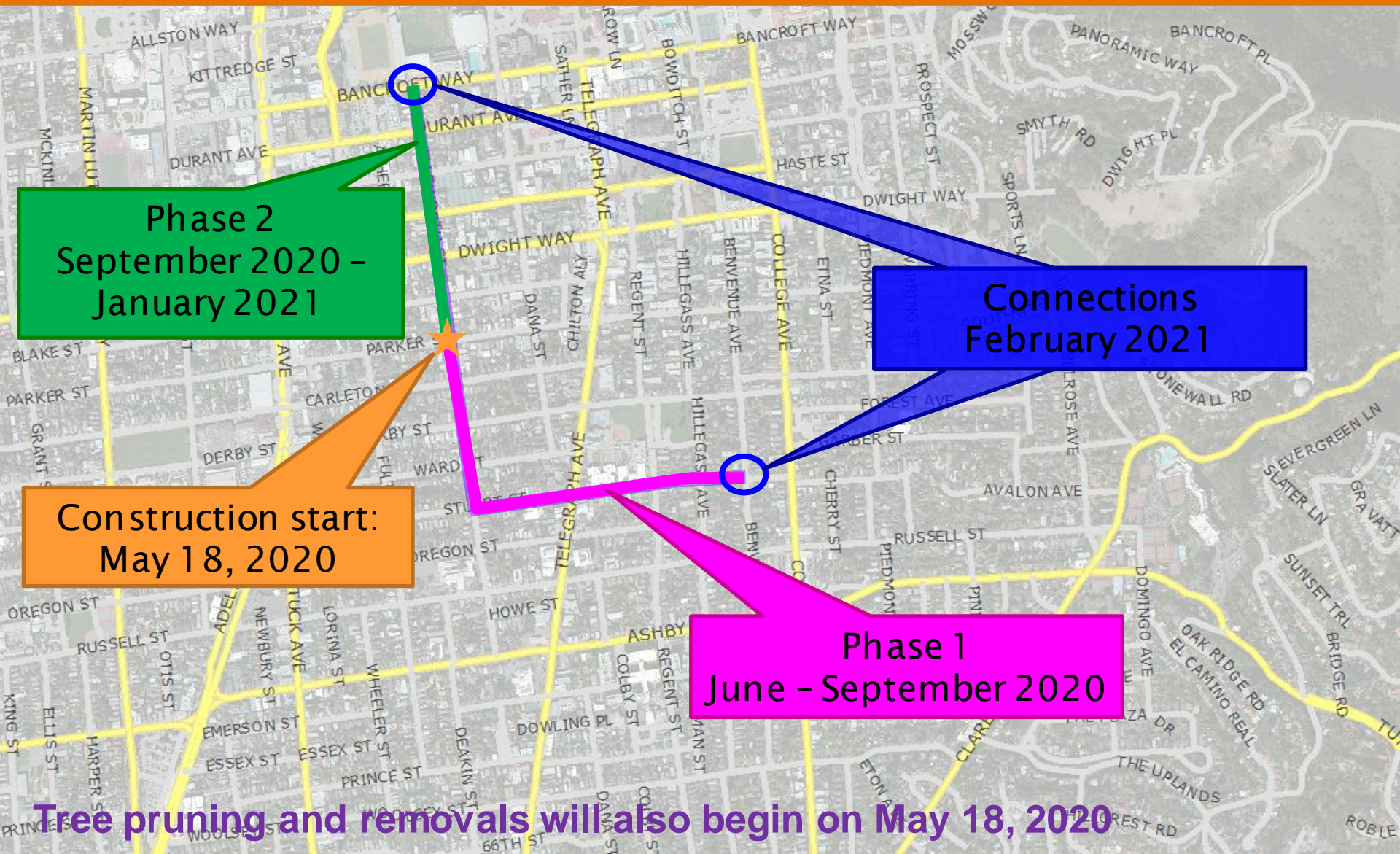
- 5,500 feet of 48-inch pipeline installation
- Asphalt pavement restoration / resurfacing
- Curb, gutter, and sidewalk restoration
- Tree protection/pruning, removal, and planting

Construction Schedule



- Preliminary work: July 2019 – March 2020
- Contract awarded: November 2019
- Notice to Proceed: January 2020
- Construction: January 2020 – Spring 2021
 - Notice to Commence Field Work: February 2020
 - Utility investigation: March 2020
 - Pipeline fabrication: March – May 2020
 - Pipeline construction: May 2020 – February 2021
 - Final paving: February 2021

Construction Schedule, cont.



Pipeline Construction at Parker/Ellsworth



Starting May 18, 2020

- Pipeline installation via jack and bore method



Receiving pit

Launching pit

- Overnight closures around launching and receiving pits

Work Hours



- Typical work hours:
8:00 am – 7:00 pm, Monday – Friday

Work Hour Exceptions



- Telegraph Avenue:
 - Pipeline construction
 - 9:00 pm – 6:00 am, Sunday PM – Friday AM
 - Anticipated to occur in early August 2020
 - Pipeline testing/disinfection operations and paving
 - 9:00 am – 4:00 pm, Monday - Friday

Work Hour Exceptions, cont.



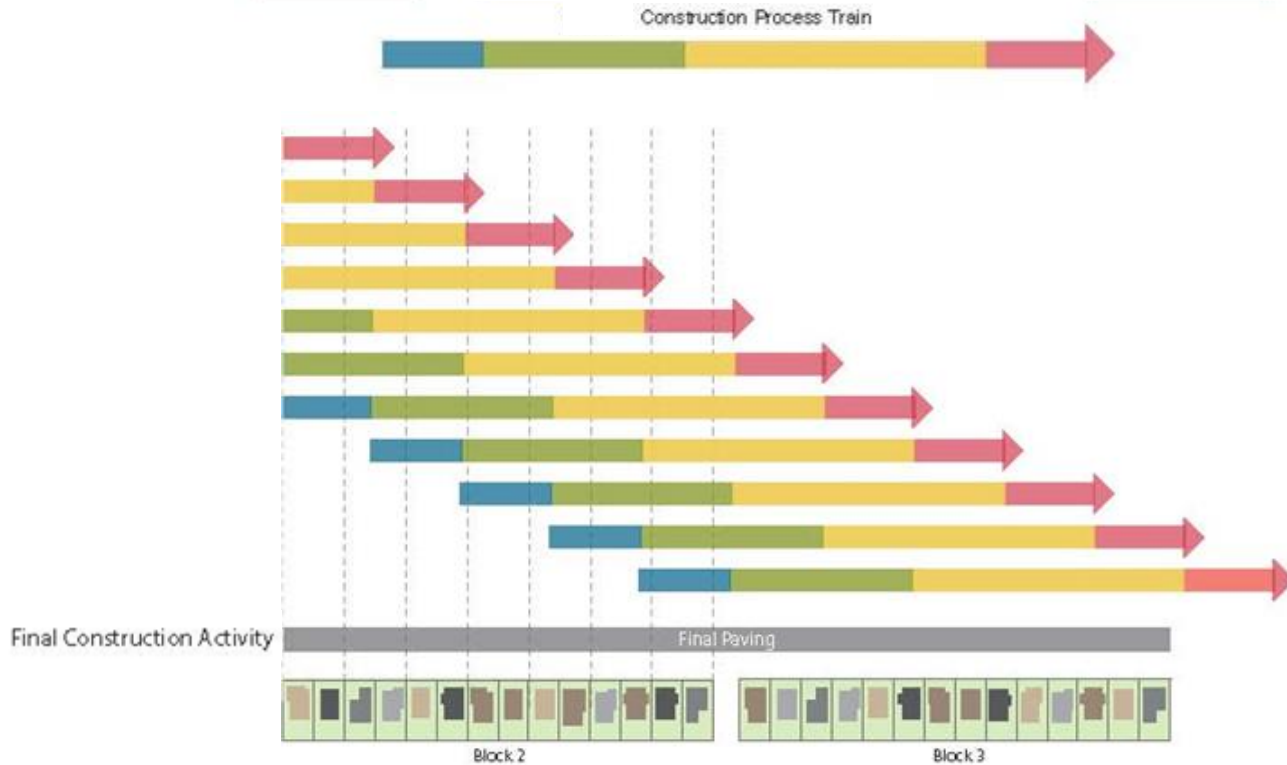
- Bancroft Way:
 - Pipeline construction
 - 9:00 pm – 7:00 am, Sunday PM – Friday AM
 - During UC Berkeley winter break (12/21/20–1/8/21)
 - Pipeline testing/disinfection operations and paving
 - 9:00 am – 4:00 pm, Monday - Friday

Large Diameter Pipe Installation



Open Trench Pipe Installation

Open Trench Construction Activities



Unload Pipe From Truck



Dig Trench



Lower Pipe Into Trench



Weld Pipeline Segments



Backfill & Compact Trench



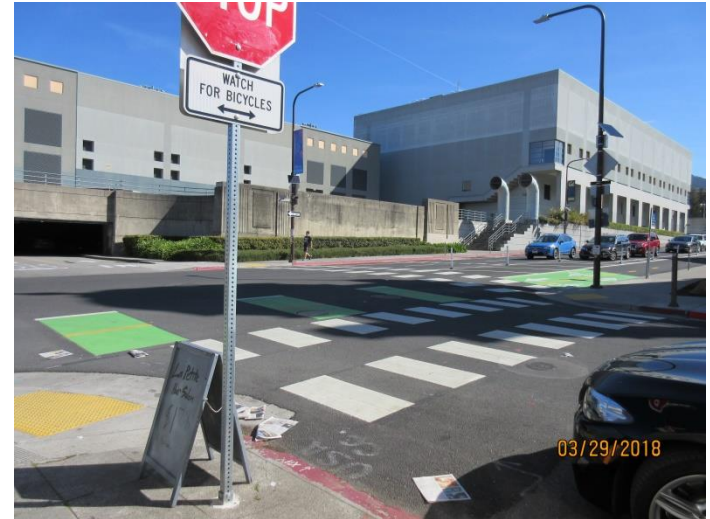
Place Asphalt



Mitigations



- Dust control and monitoring
- Emissions control
- Storm water pollution prevention
- Water control and disposal plan
- Construction waste disposal plan
- **Noise control and monitoring**
- Vibration control and monitoring
- Subsurface utility protection
- **Tree protection and landscape management**
- Bird protection
- Cultural and paleontological resource recognition training
- **Traffic control**
- **Pavement restoration**



Noise Control

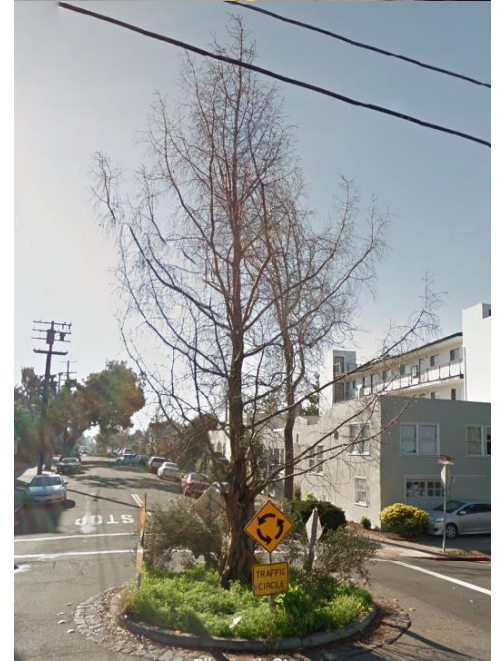
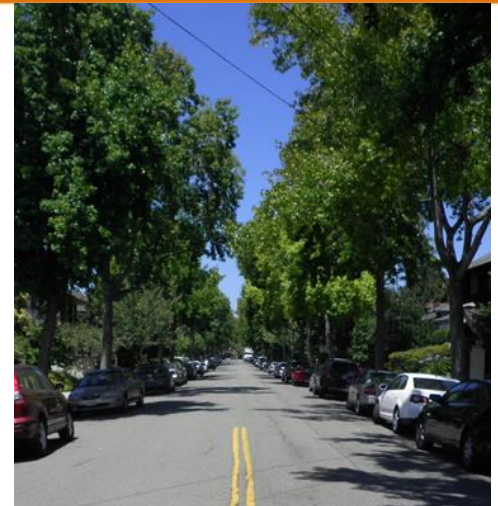


- Construction activities limited to daytime weekday hours, besides exceptions previously noted
- 7-day advanced resident email notifications about work
- Noise control technology (mufflers, intake silencers, attenuation shields, etc.)
- Equipment electrically or hydraulically powered where possible
- Coordination with schools to minimize noise impacts on activities to the extent feasible

Tree Protection



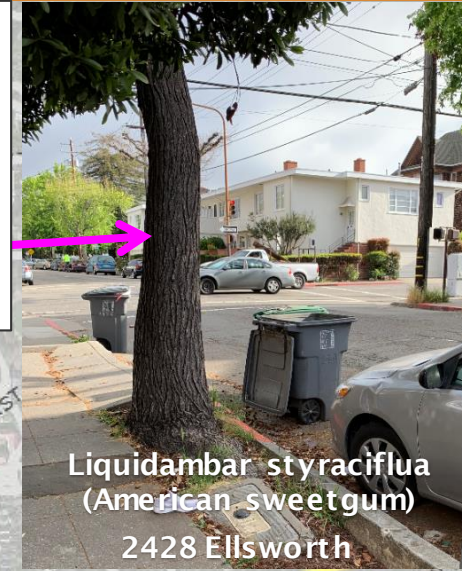
- Tree protection along pipeline alignment with exclusion fencing and/or wrapping
- Hand digging to expose roots where excavation is within 5 feet of tree trunk
- Pruning of tree limbs/roots where necessary
- Consulting Arborist onsite directing and documenting tree protection, pruning, and any accidental hits and treatment
- Consulting Arborist surveyed trees prior to construction and will evaluate trees again one year following construction



Tree Management



- Remove 2 trees, plant 3 new trees
- New tree locations will be distributed equidistant between two removal locations
- New species: Persian ironwood / Parrotia persica



Liquidambar styraciflua
(American sweetgum)
2428 Ellsworth

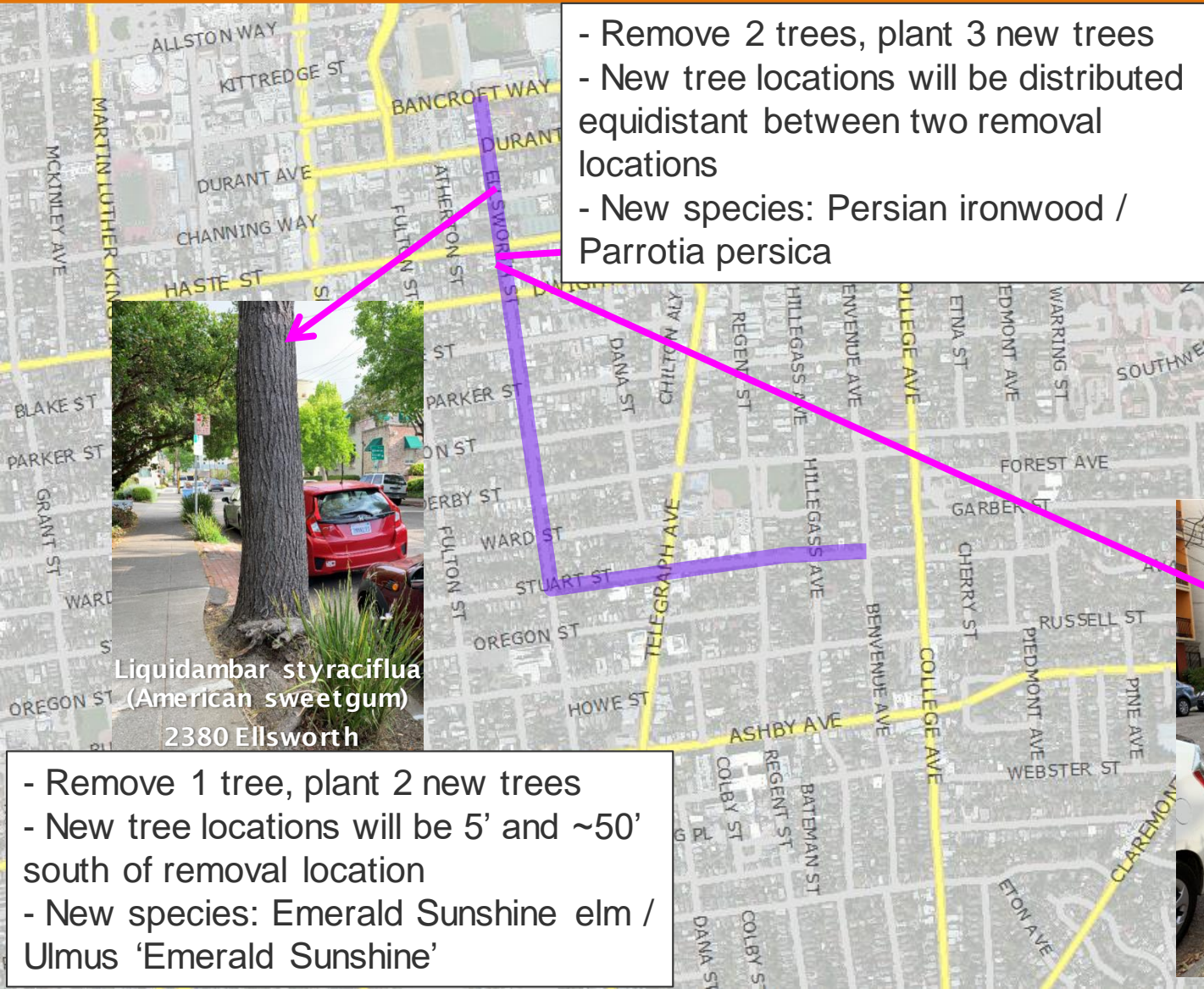


Liquidambar styraciflua
(American sweetgum)
2380 Ellsworth



Jacaranda mimosifolia
(Jacaranda)
2432 Ellsworth

- Remove 1 tree, plant 2 new trees
- New tree locations will be 5' and ~50' south of removal location
- New species: Emerald Sunshine elm / Ulmus 'Emerald Sunshine'



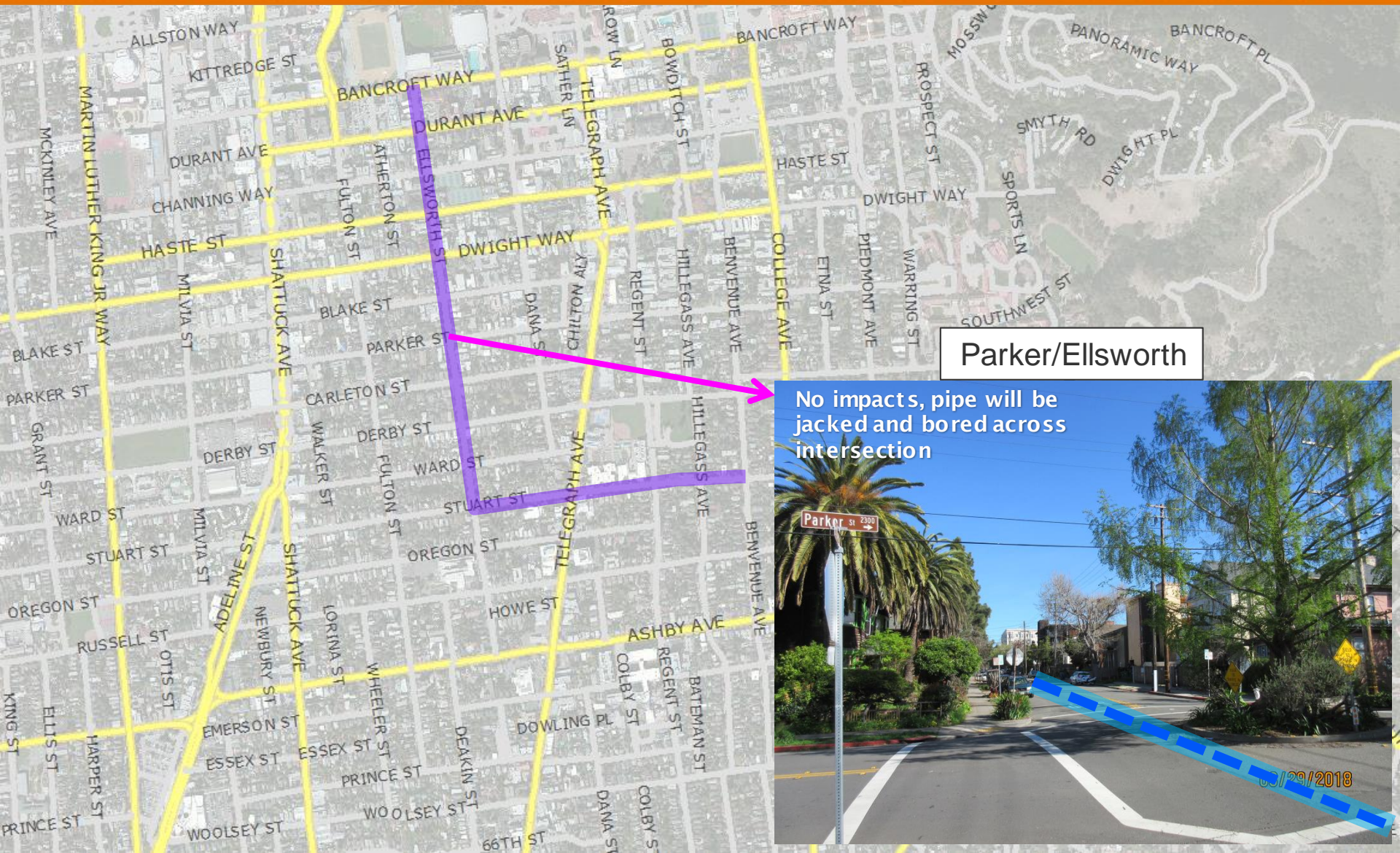
Landscape Restoration



- Restore disturbed landscaping to pre-project conditions using similar plants and materials



Traffic Circles



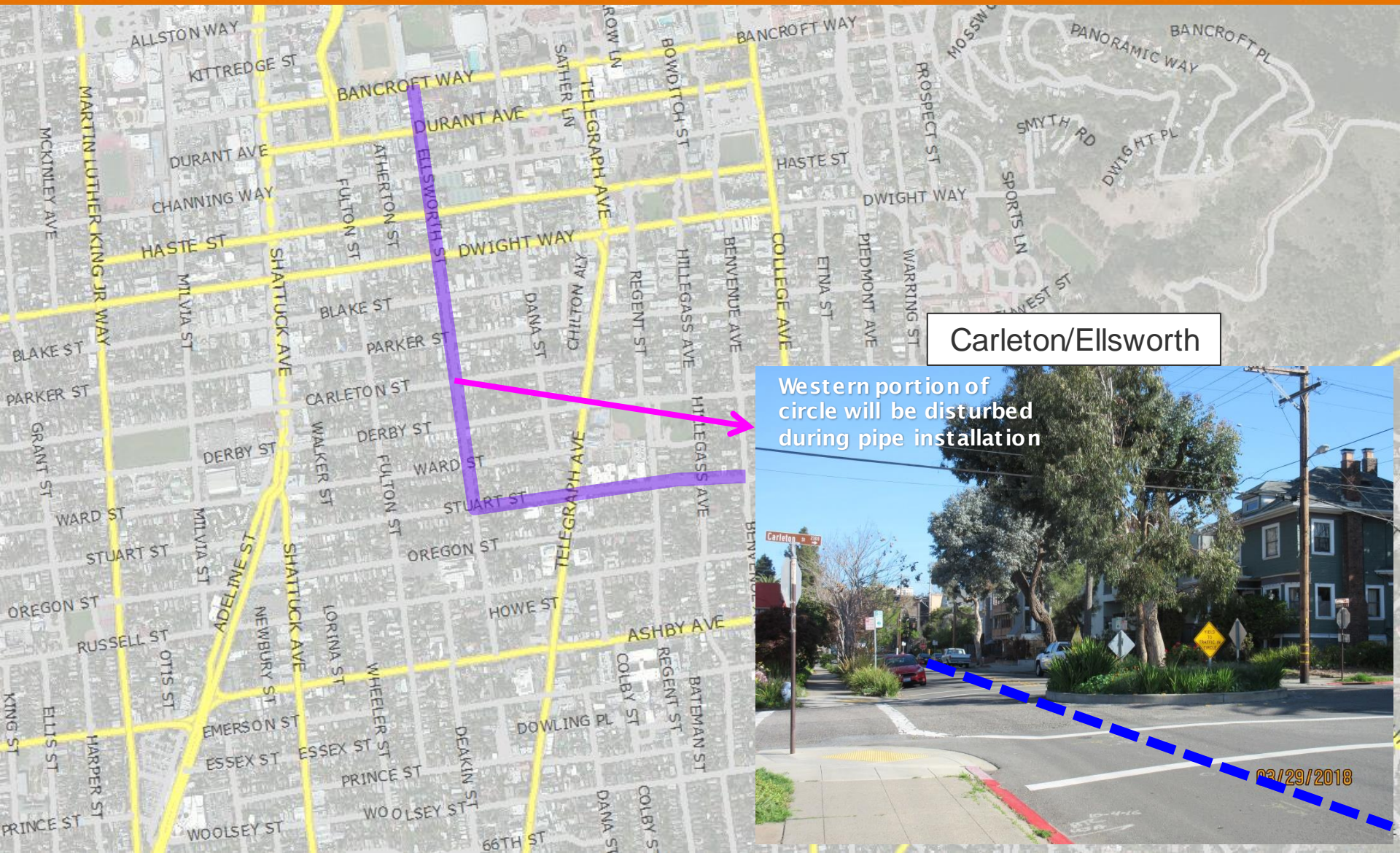
Parker/Ellsworth



No impacts, pipe will be jacked and bored across intersection

03/29/2018

Traffic Circles



Carleton/Ellsworth



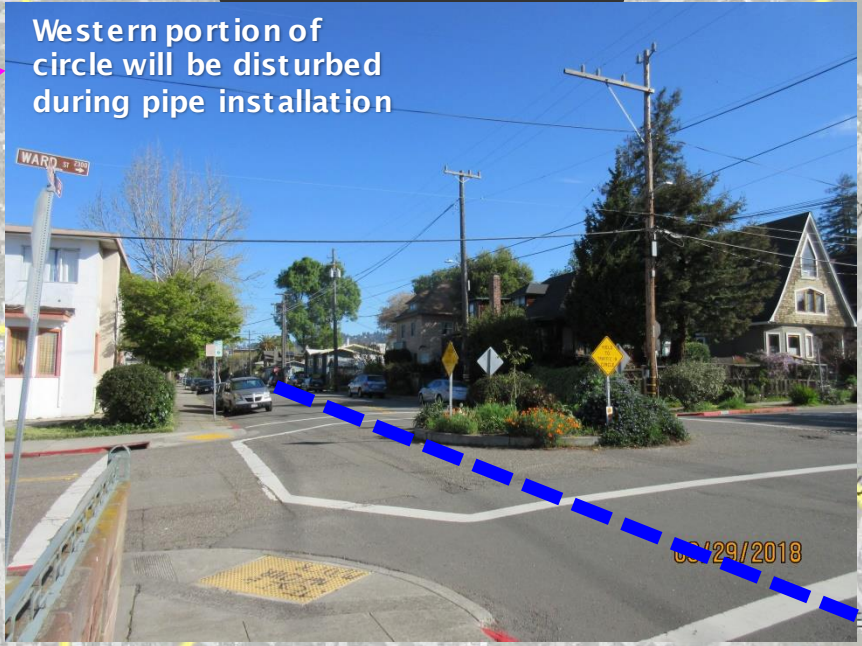
Western portion of circle will be disturbed during pipe installation

03/29/2018

Traffic Circles



Ward/Ellsworth



Western portion of circle will be disturbed during pipe installation

08/29/2018

Traffic Circles



Air Valves

- 8 air valves will be installed along the pipeline alignment
- Residents will be notified about air valves that will be located in front of property



Traffic Control



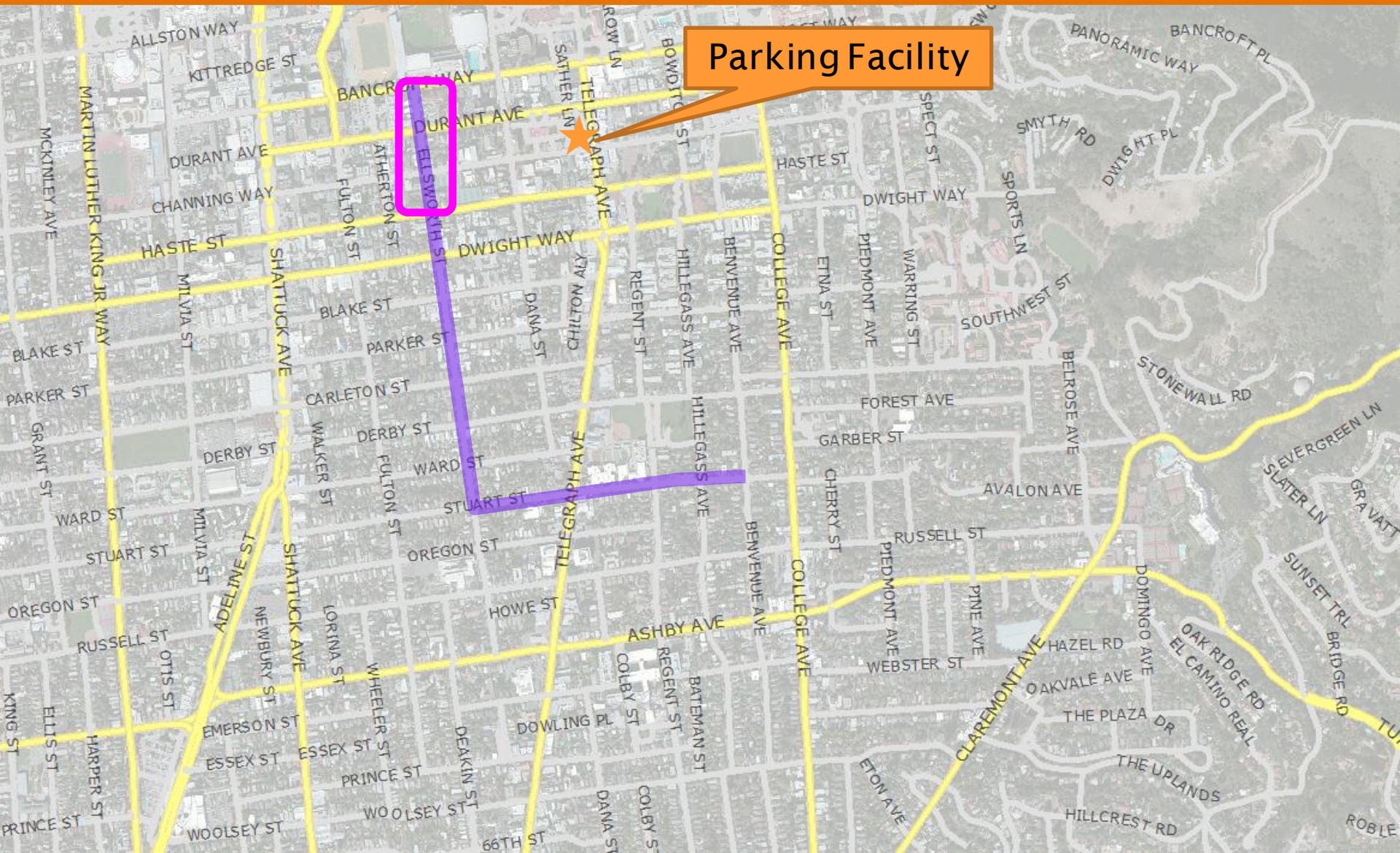
- Block by block residential street closures
- Sidewalk access available for pedestrians on one side of street
- Controlled access to resident homes during street closures
- Advanced notification of residents/businesses about road closures
- Roads will be reopened at the end of the work day

Parking

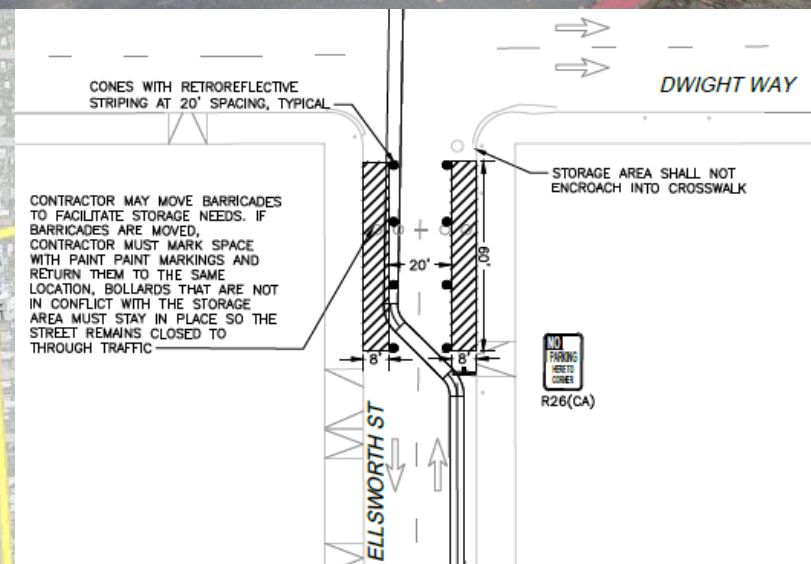
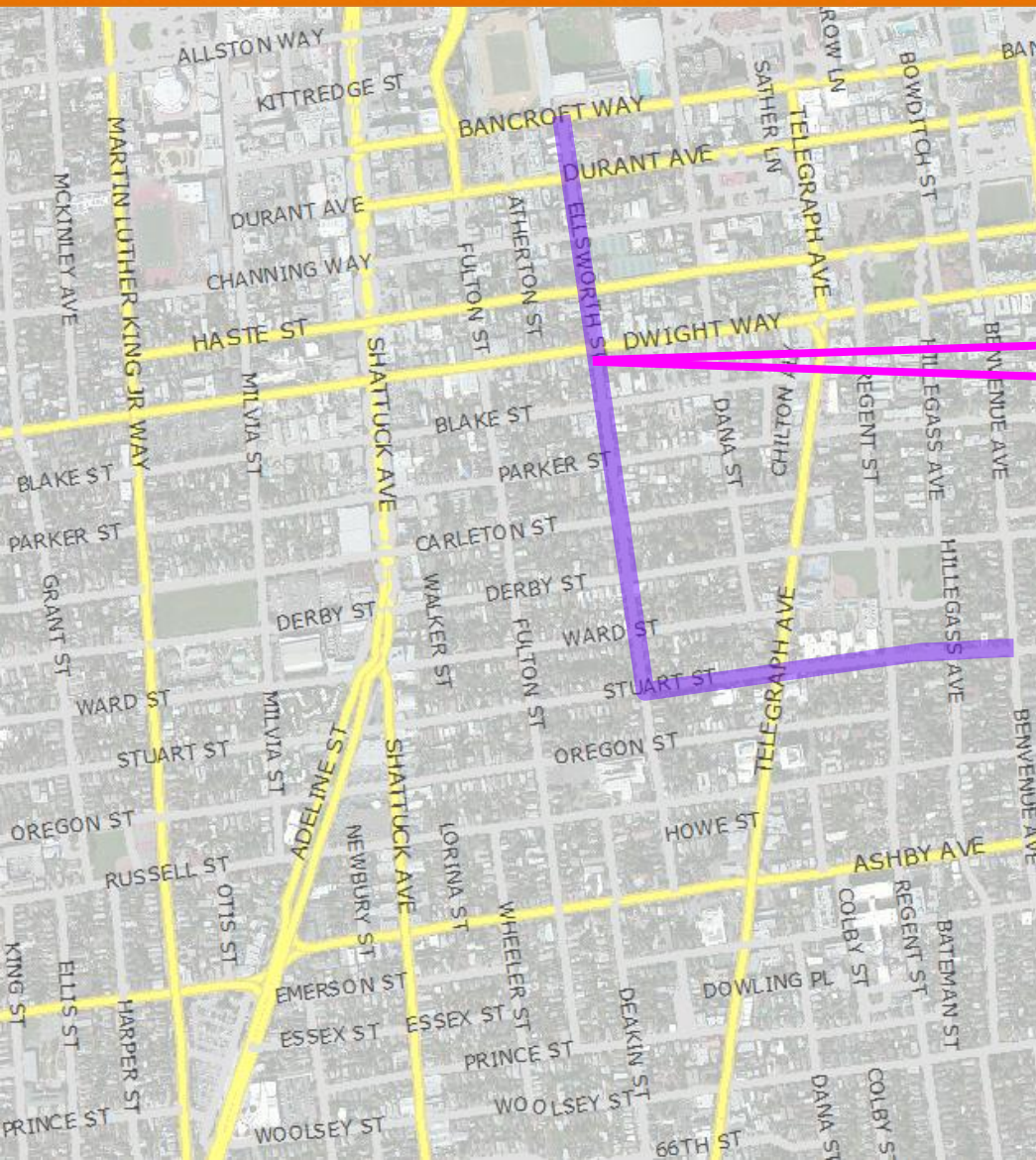


- Parking will be restricted in work areas during work hours

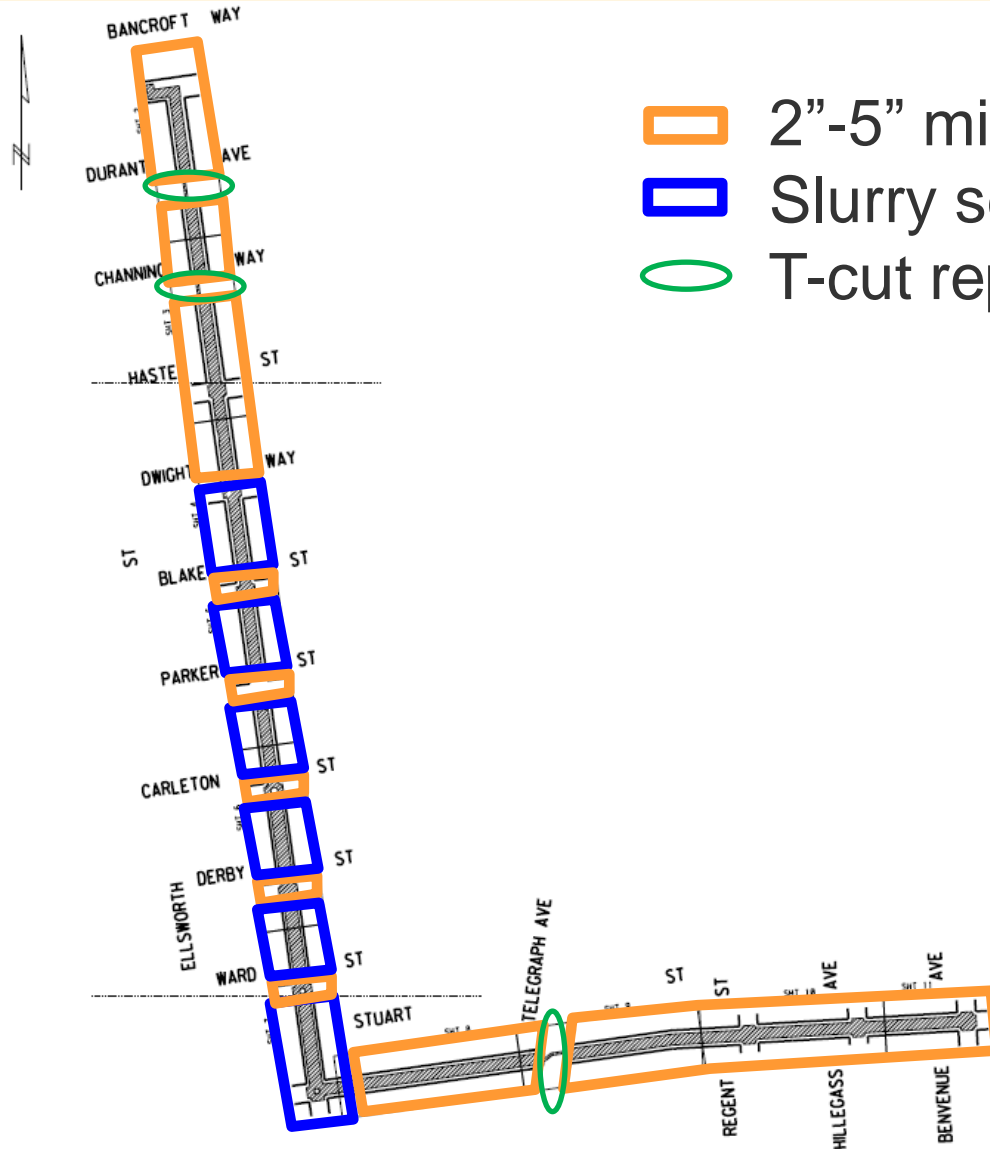
Alternative Parking






Overnight Storage



Paving



-  2"-5" mill and overlay
-  Slurry seal
-  T-cut repair

Pavement Restoration Progression



Plates



Paving Over Trench



Final Paving



Questions?



For future questions or concerns:

Y'Anad Burrell, Community Affairs Representative

Email: yanad.burrell@ebmud.com

Phone: (510) 287-7208

After-hours, call EBMUD at (866) 403-2683

Project website: <https://www.ebmud.com/about-us/construction-and-maintenance/construction-my-neighborhood/west-hills-northern-pipelines/berkeley-wildcat-pipeline/>