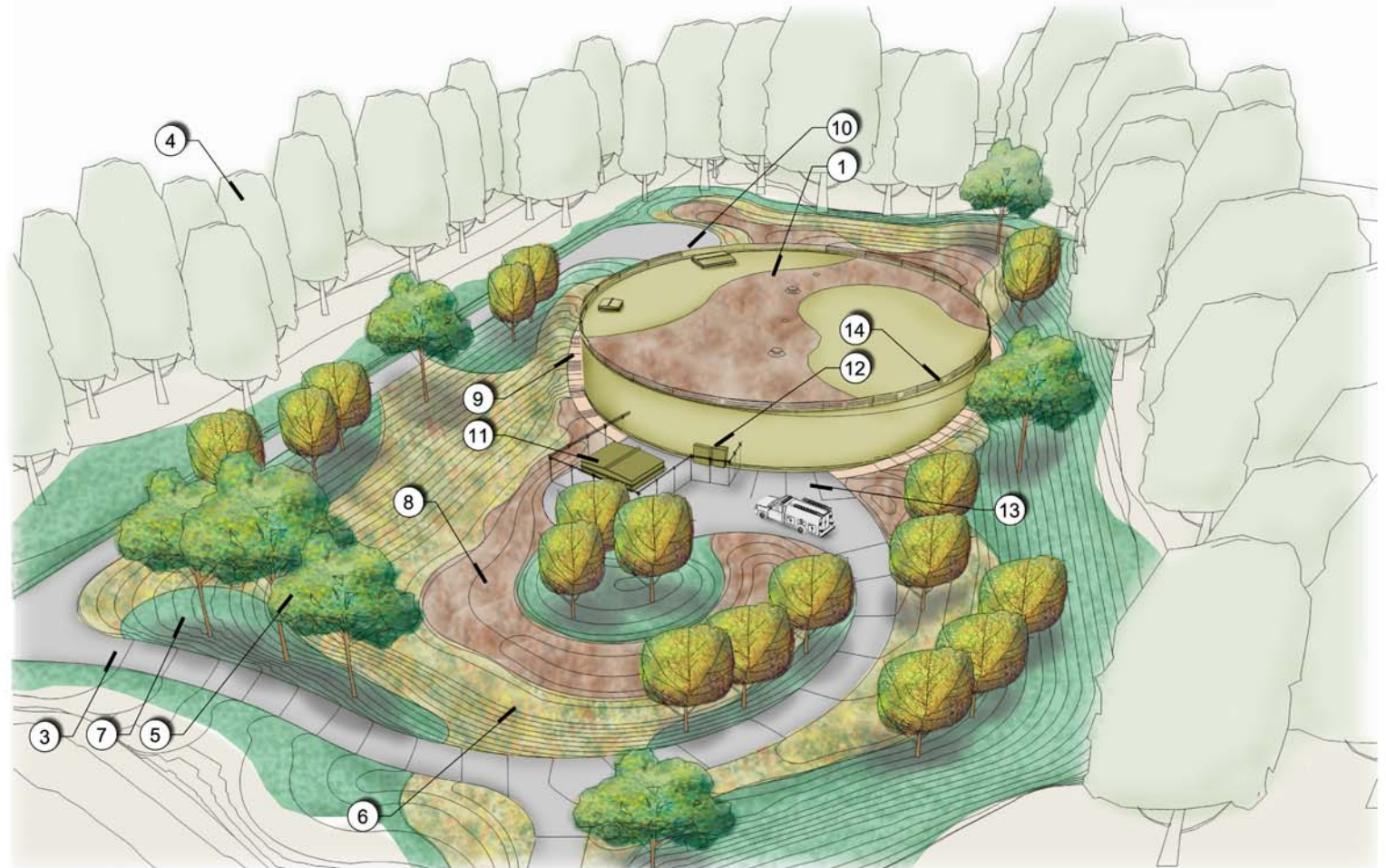




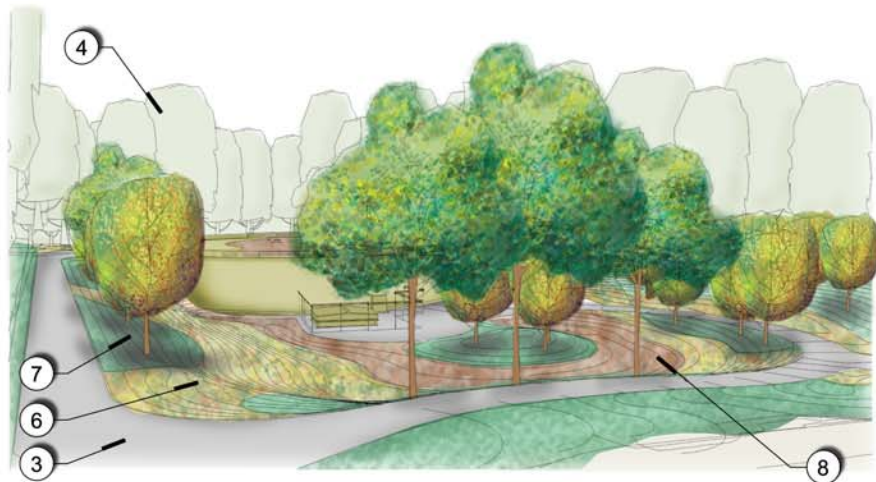
SITE PLAN KEY MAP

**LEGEND**

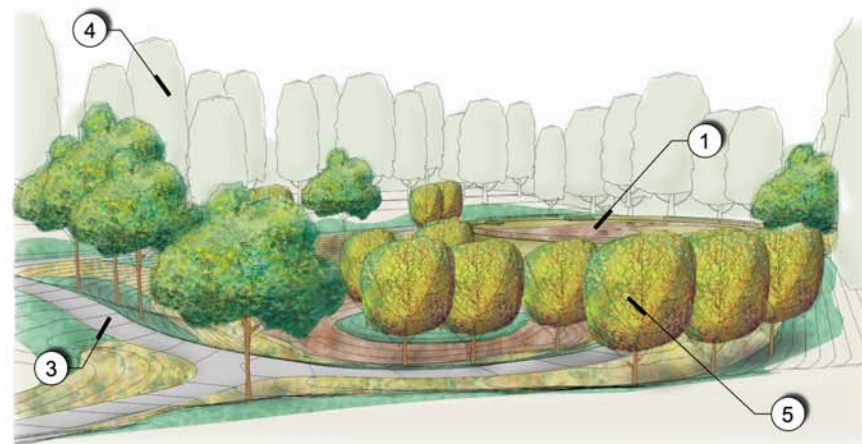
SYMBOL	DESCRIPTION	SYMBOL	DESCRIPTION
1	RESERVOIR (CONCRETE ROOF) Painted Roof and Exposed Sides EBMUD Standard Color Light Olive (Federal 595B Color #14255) Gravel Drain Rock placed per plan	8	GRAVEL DRAINAGE BED
2	EXISTING GATED ENTRY New 8 Foot High Fence and Gate Black Vinyl Coated V-Barb Top 1" Mesh Fencing (EBMUD Standard)	9	DECOMPOSED GRANITE ACCESS PATH 6 Foot Wide Tank Perimeter Maintenance Access Stair Sections and Security Fencing
3	ASPHALT ACCESS ROAD 12 Foot Wide Asphalt Roadway Drainage Collection "V" Ditch	10	ROOF ACCESS Stairwell Roof Access Security Fencing and Gates
4	EXISTING TREES (TO REMAIN)	11	VALVE PIT & ELECTRICAL Security Fencing and Gates
5	PROPOSED SCREEN TREES Drought Tolerant Drip Irrigation	12	SAMPLING AND RTU CABINETS Security Fencing and Gates
6	HYDROSEEDDED WILDFLOWER & GRASSES Non-Irrigated Seasonal Maintenance	13	MAINTENANCE VEHICLE PARKING
7	GROUND COVER & SHRUB PLANTING Drought Tolerant Irrigated	14	ROOF SAFETY RAILING 42" High Cable Rail System Light Olive Vinyl Coated Posts
			OTHER IMPROVEMENTS COMMUNICATIONS ANTENNA Existing Antenna to be Relocated on Site



(A) PROPOSED SITE PLAN



(B) PROPOSED VIEW FROM THE NORTH



(C) PROPOSED VIEW FROM THE SOUTH



Cable Rail System



Gravel Rock Roof Treatment

**PERSPECTIVES**



**39TH AVENUE RESERVOIR REPLACEMENT PROJECT**

East Bay Municipal Utilities District  
4290 Maybelle Avenue, Oakland, California

