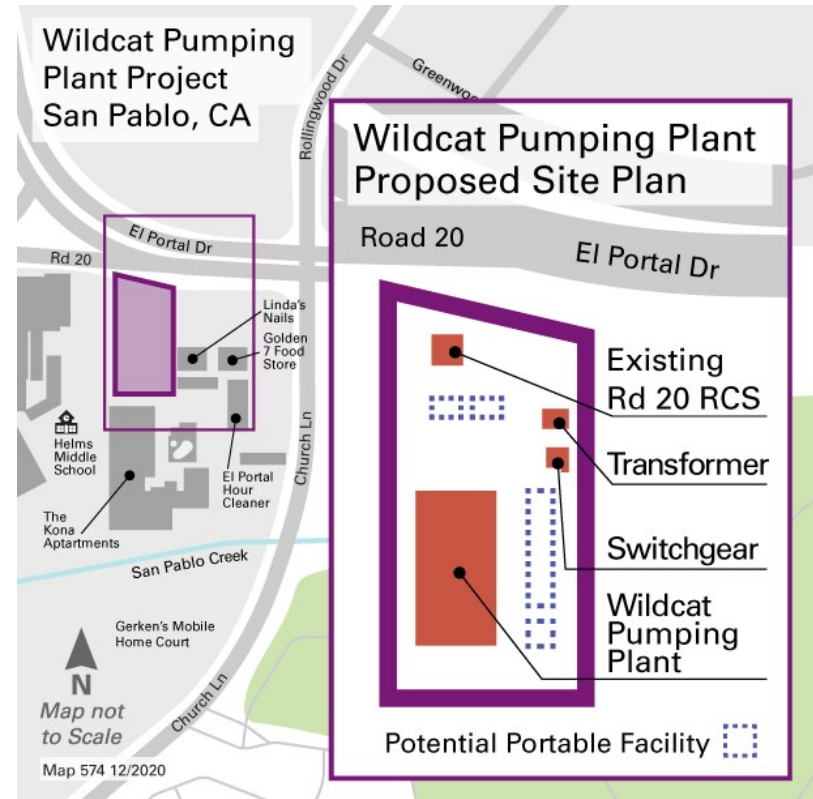


Wildcat Pumping Plant Project



Community Meeting
January 26, 2021

Project Team



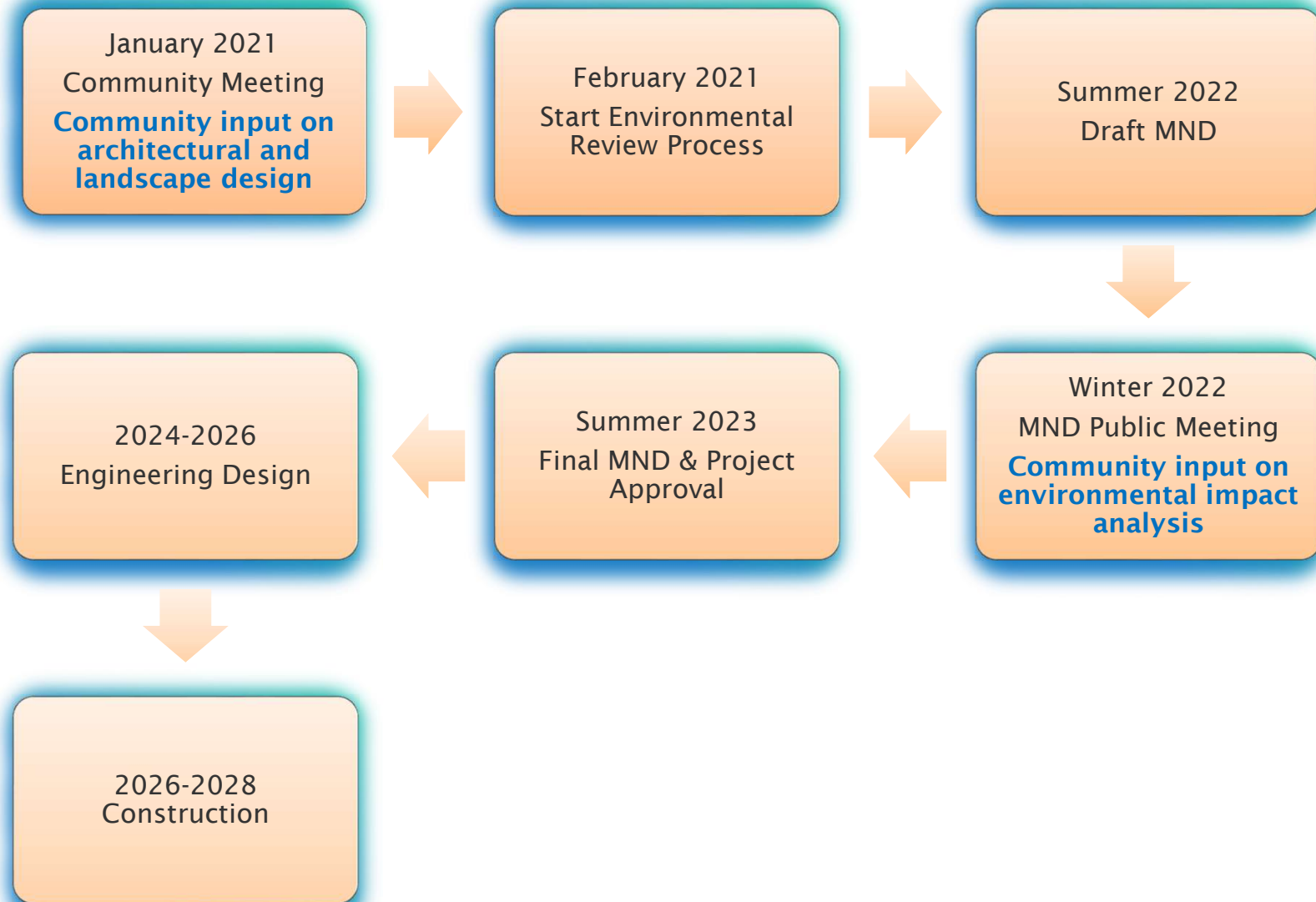
- EBMUD
 - David Rehnstrom, P.E., Division Manager
 - Jose Rios, P.E., Senior Engineer
 - Anna Lau, P.E., Project Manager
 - Sharla Sullivan, Community Affairs
- Consultants
 - Panorama, Specialty CEQA Consultants
 - MWA Architects, Architectural Design
 - Dillingham Associates, Landscape Architecture

Agenda

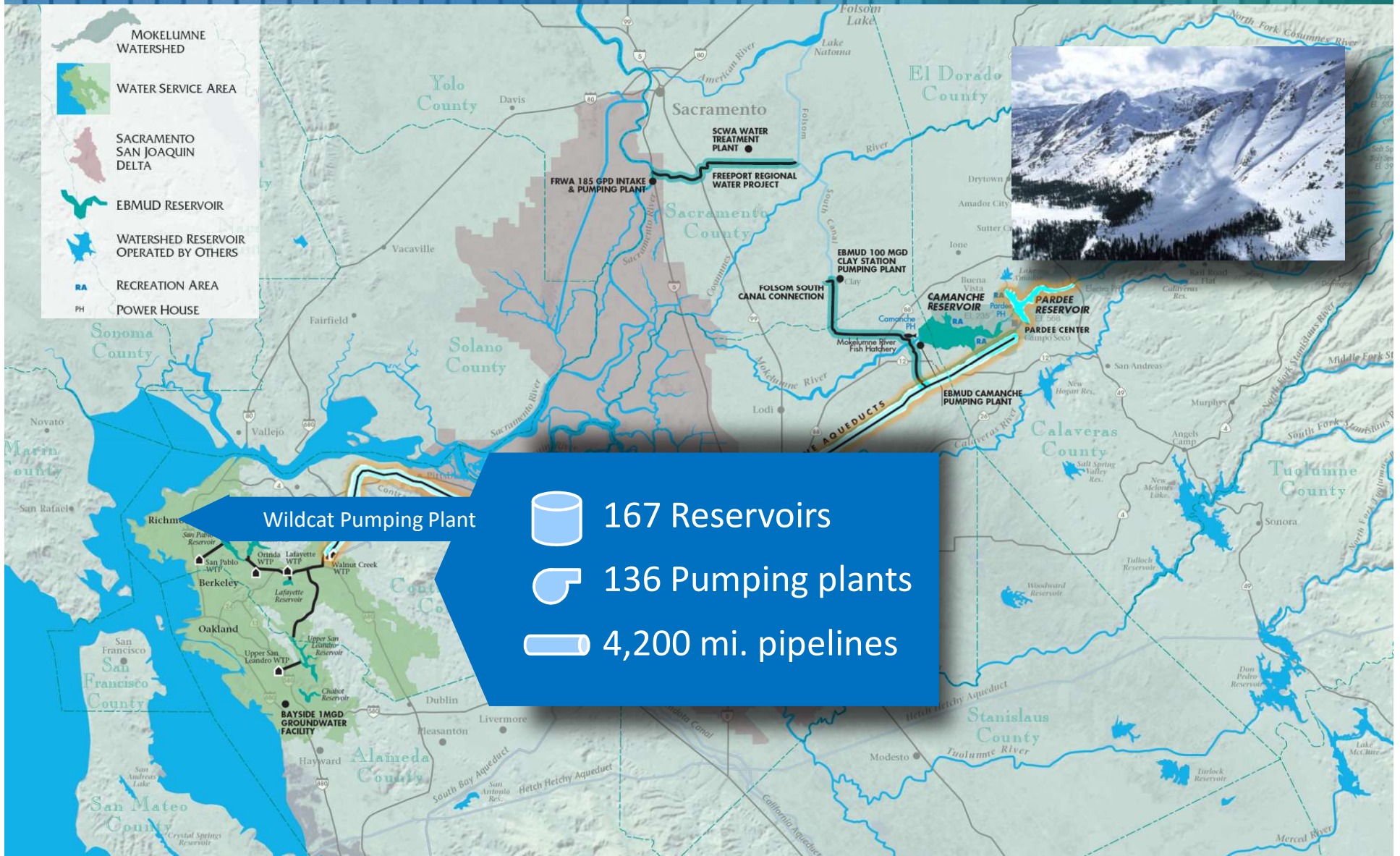


- Schedule
- Background
- Project Purpose & Need
- Site Planning
- Conceptual Architectural & Landscape Plans
- Q & A

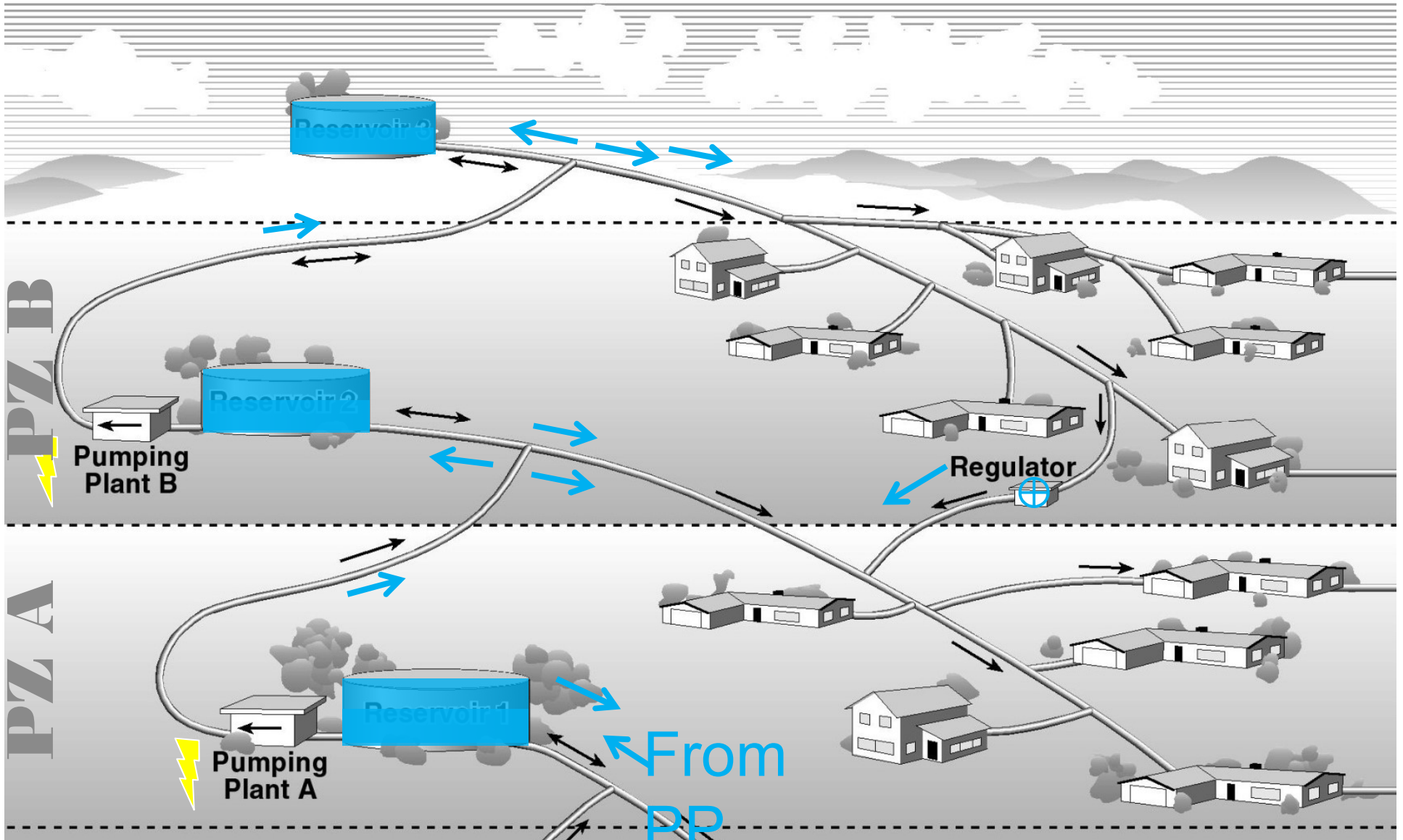
Wildcat Pumping Plant Replacement Schedule



EBMUD Water System



Treated Water Distribution System



Why are we constructing the Pumping Plant?



- Improve water service reliability for customers from Oakland to Crockett
- Provide transmission capacity during facility outages/emergencies
- Distribute water stored in San Pablo Reservoir and treated in Sobrante Water Treatment Plant



Project Site

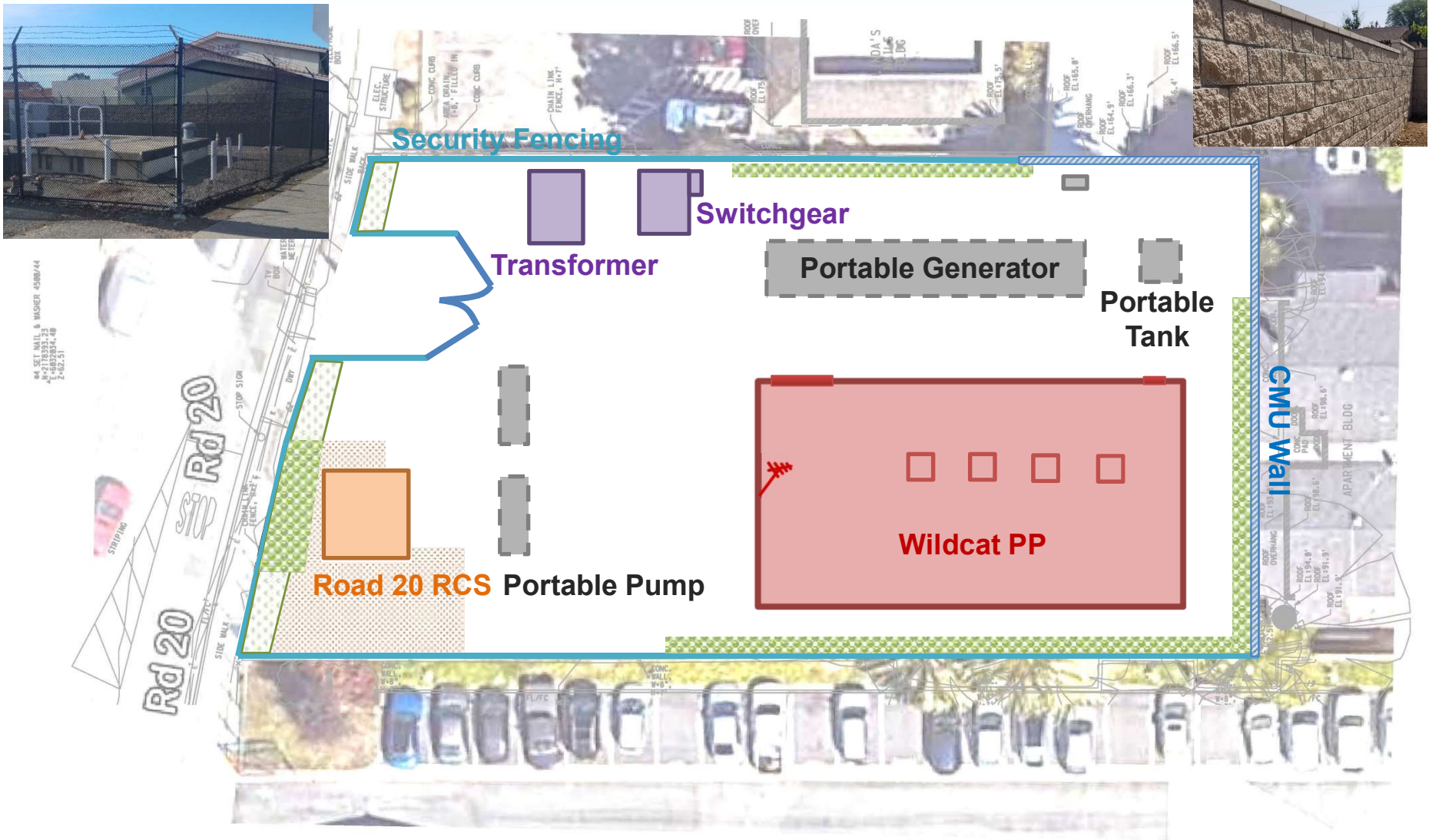


Existing Project Site



Road 20 RCS **Road 20 PP**

Conceptual Site Plan



Conceptual Architectural and Landscape Plans



- Trevor Gotfredson, MWA Architects

Project Location



Residential Context



Residential Context



Commercial Context



Civic Context



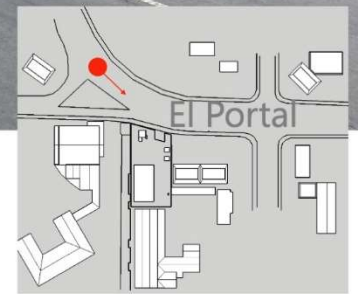
Civic Context



Existing Conditions



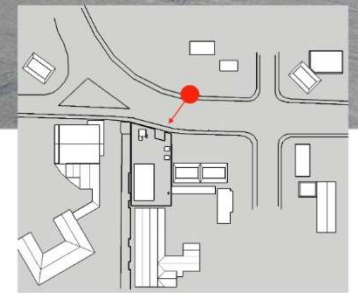
VIEW 1
EL PORTAL FACING EAST



Existing Conditions



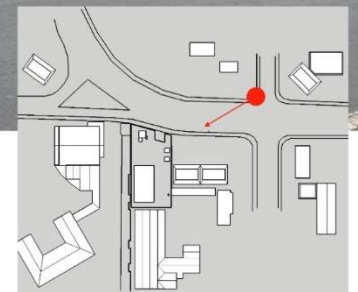
VIEW 2
EL PORTAL FACING SOUTH



Existing Conditions



VIEW 3
EL PORTAL FACING WEST



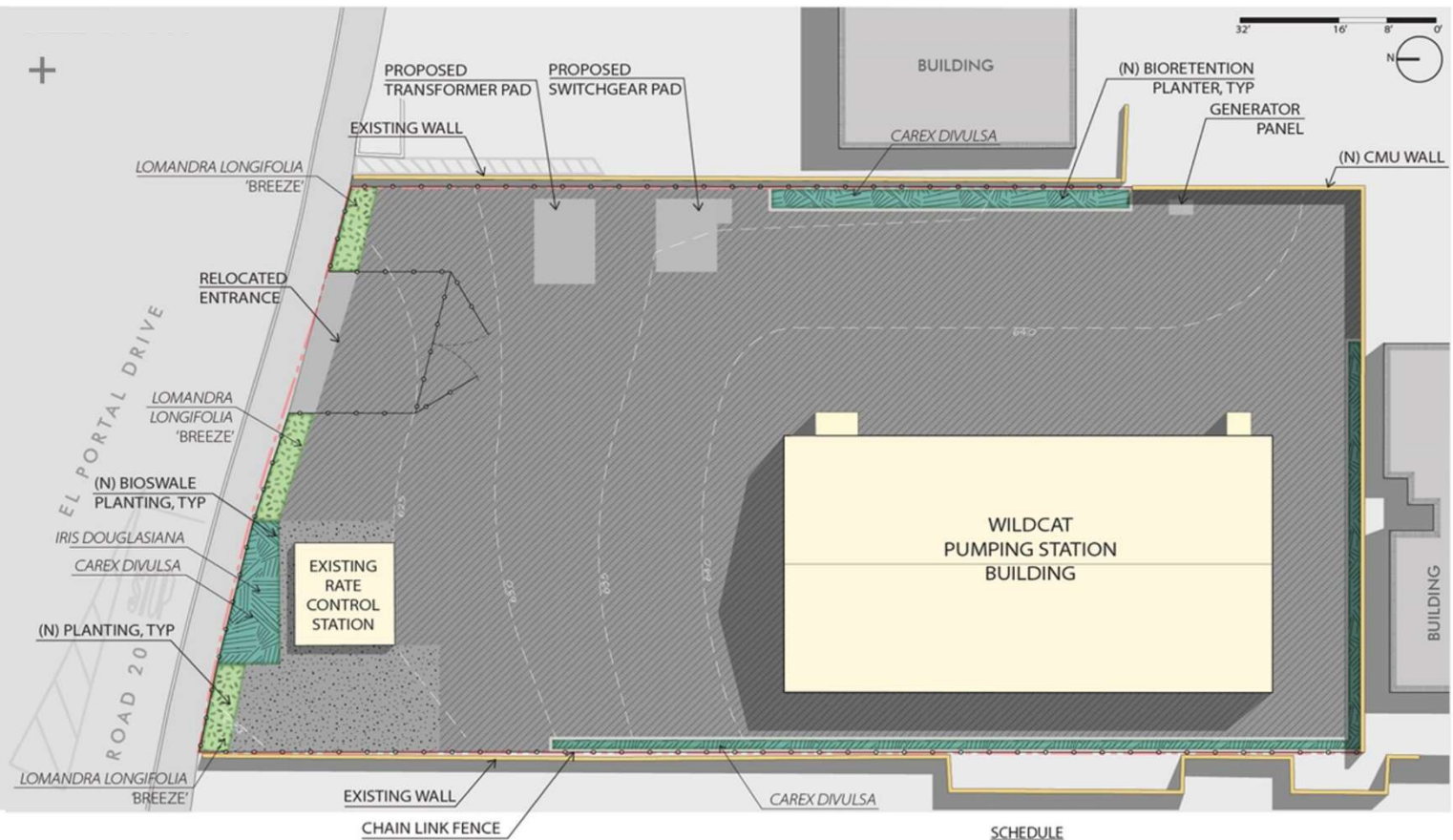
Design Alternatives



Site Plan



SITE PLAN + PLANTING



LEGEND

CONCRETE PAVING	ASPHALT PAVING	GRAVEL PAVING	BIOSWALE PLANTING	PLANTING STRIP

SCHEDULE

SYMBOL	BOTANICAL NAME	COMMON NAME	SIZE	SPACING
	<i>Carex divulsa</i>	Berkeley Sedge	1 gal	@ 2-ft O.C.
	<i>Iris douglasiana</i>	Douglas Iris	1 gal	@ 2-ft O.C.
	<i>Lomandra longifolia</i> 'Breeze'	Breeze Dwarf Mat Rush	1 gal	@ 2-ft O.C.

Plant Palette



PLANTING ALONG SIDEWALK



Lomandra longifolia 'Breeze'
Breeze Dwarf Mat Rush

BIORETENTION PLANTERS



Carex divulsa
Berkeley Sedge



Iris douglasiana
Douglas Iris

Concept 1



CONCEPT 1 "California Mission"

ATTRIBUTES

- Low-pitched gable roof with red standing seam metal and overhangs
- Painted stucco walls, matching trim
- Contrasting façade recesses
- Prominent, arched entryway in contrasting color



Concept 1



CONCEPT 1 "California Mission"

MATERIALS PALLETE

- Standing seam metal roof
- Painted stucco
- Prefinished metal doors, louvers



Concept 1



CONCEPT 1
VIEW 1
EL PORTAL FACING EAST



Concept 1



CONCEPT 1
VIEW 2
EL PORTAL FACING SOUTH



Concept 1



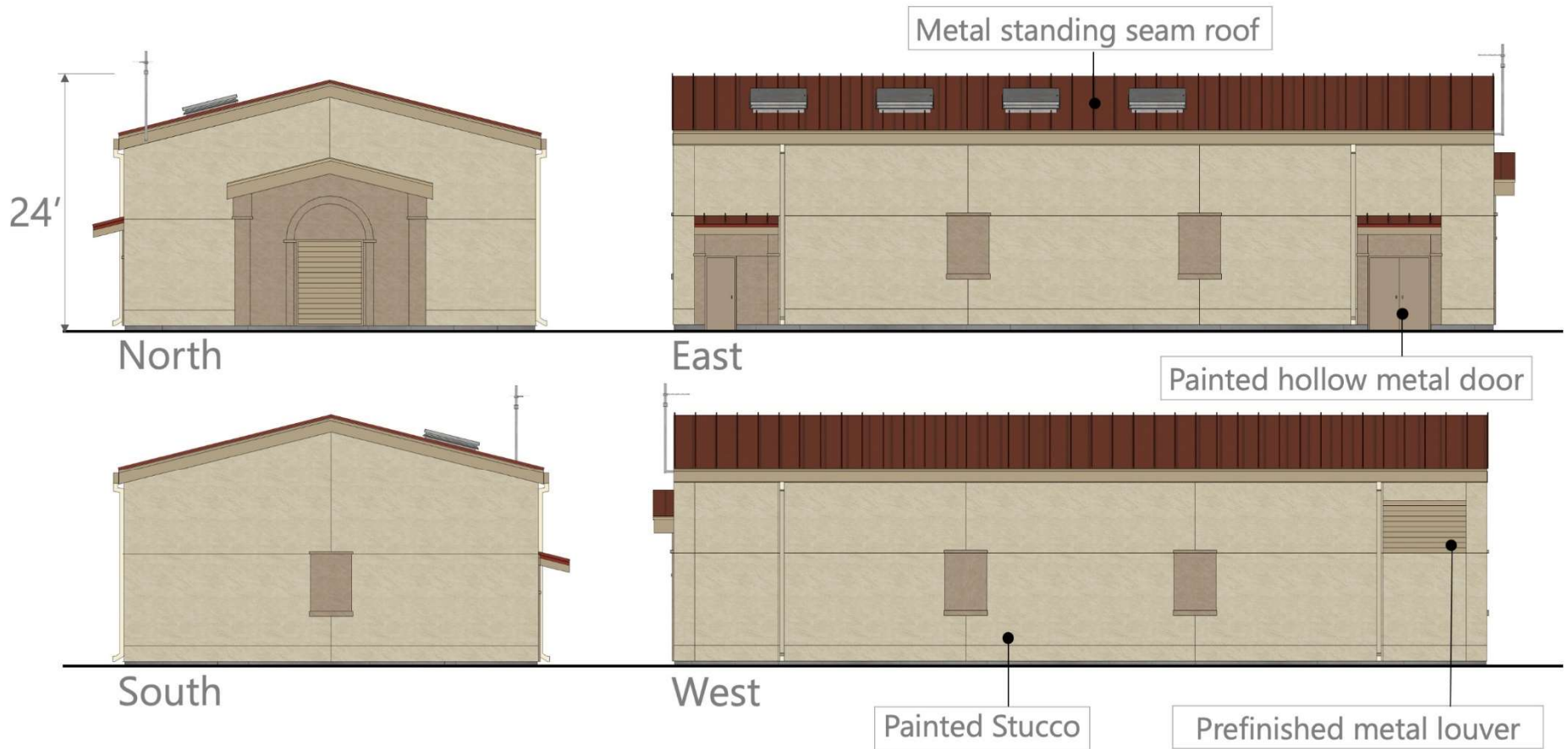
CONCEPT 1
VIEW 3
EL PORTAL FACING WEST



Concept 1



CONCEPT 1 – ELEVATIONS



Concept 2



CONCEPT 2 "Multifamily"

ATTRIBUTES

- Low-pitched gable roof with standing seam metal and no overhang
- Clear representation of floor levels
- Painted stucco with contrasting accents
- Repetitive openings module with distinctive entry



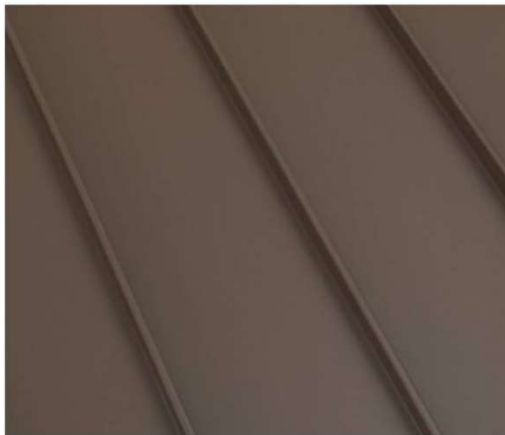
Concept 2



CONCEPT 2 "Multifamily"

MATERIALS PALLETE

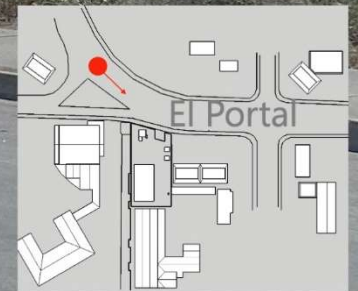
- Standing seam metal roof
- Painted stucco
- Painted metal doors, louvers



Concept 2



CONCEPT 2
VIEW 1
EL PORTAL FACING EAST



Concept 2



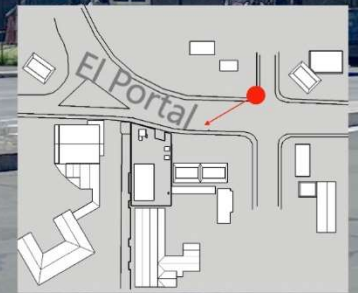
CONCEPT 2
VIEW 2
EL PORTAL FACING SOUTH



Concept 2



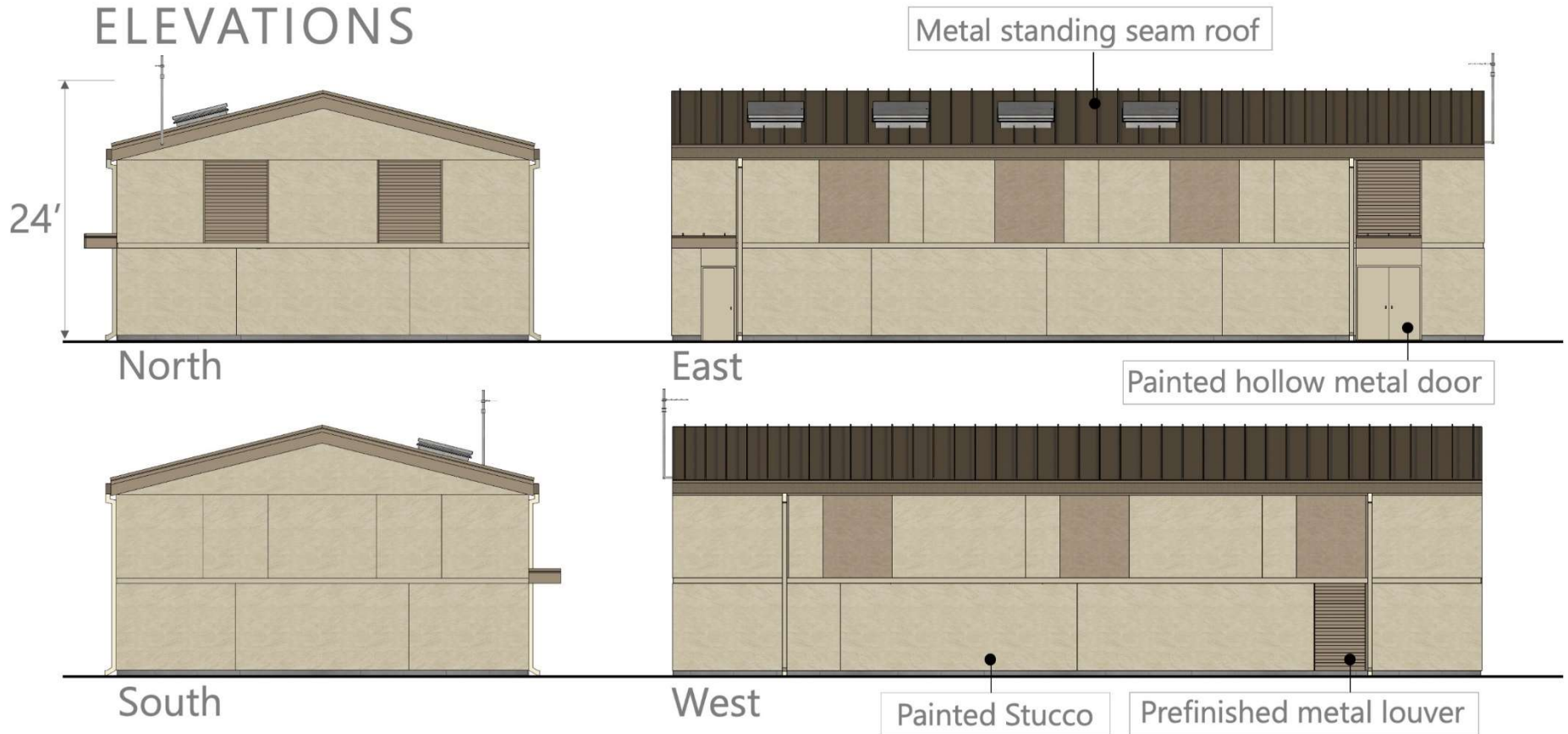
CONCEPT 2
VIEW 3
EL PORTAL FACING WEST



Concept 2



CONCEPT 2 ELEVATIONS



Concept 3



CONCEPT 3 "Modern Institutional"

ATTRIBUTES

- Low-pitched gable roof with standing seam metal and minimal overhang
- Panelized facade with painted stucco and raw board-formed concrete
- Primary emphasis on entryway with minimal trim



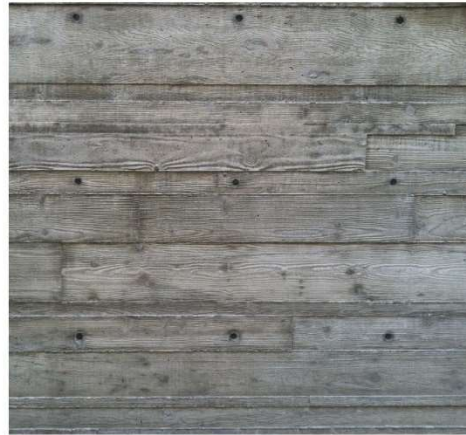
Concept 3



CONCEPT 3 "Modern Institutional"

MATERIALS

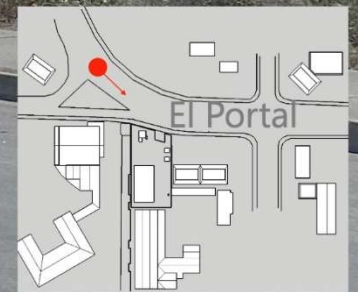
- Standing seam metal roof
- Board-formed concrete
- Painted stucco
- Prefinished metal doors, louvers



Concept 3



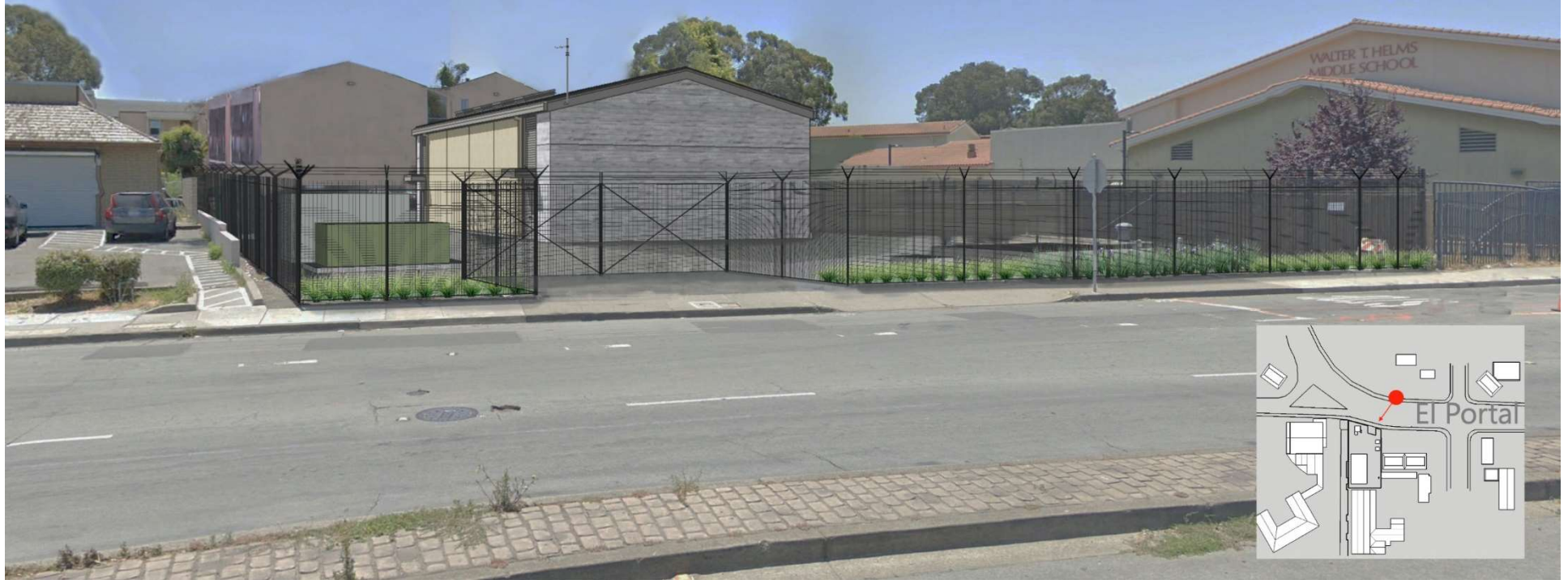
CONCEPT 3
VIEW 1
EL PORTAL FACING EAST



Concept 3



CONCEPT 3
VIEW 2
EL PORTAL FACING SOUTH



Concept 3



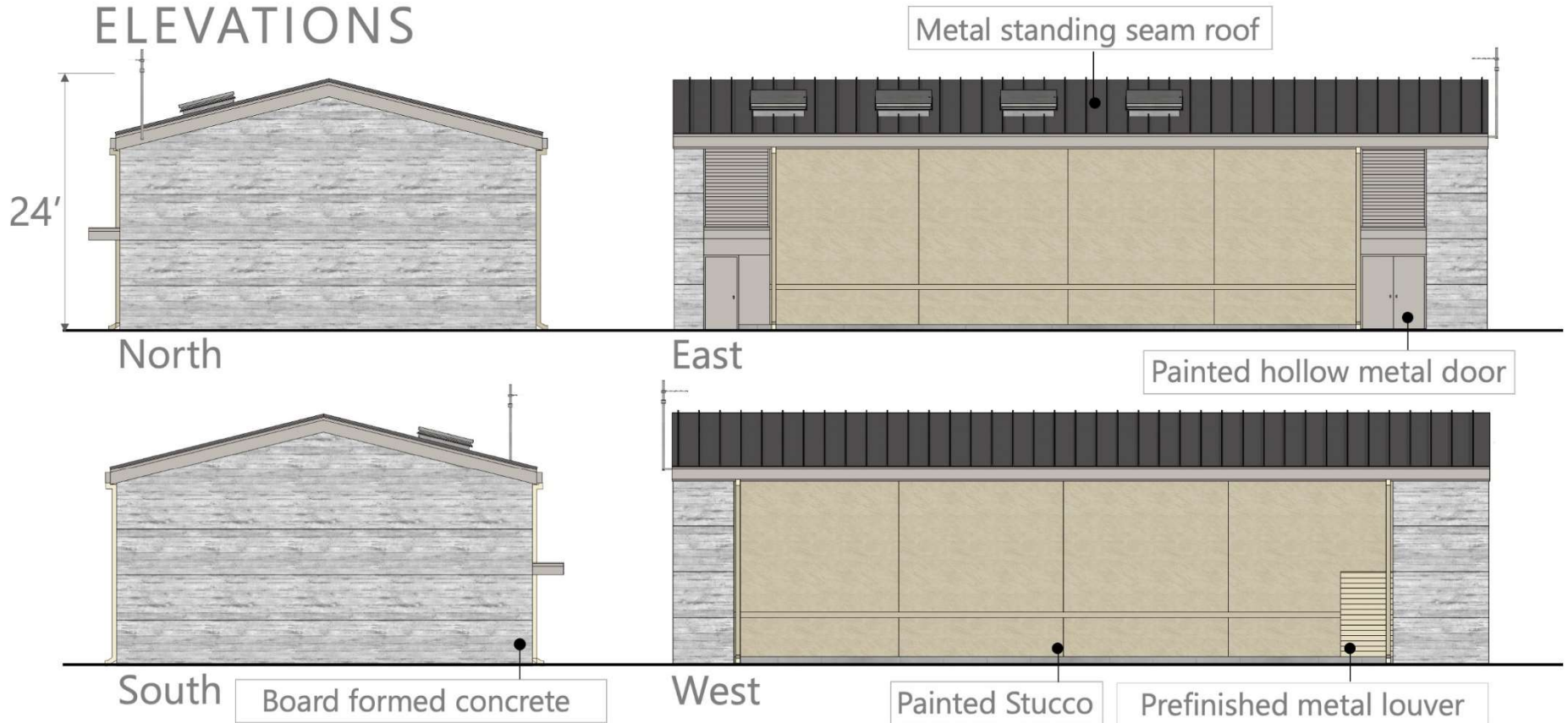
CONCEPT 3
VIEW 3
EL PORTAL FACING WEST



Concept 3



CONCEPT 3 ELEVATIONS



Concepts Review



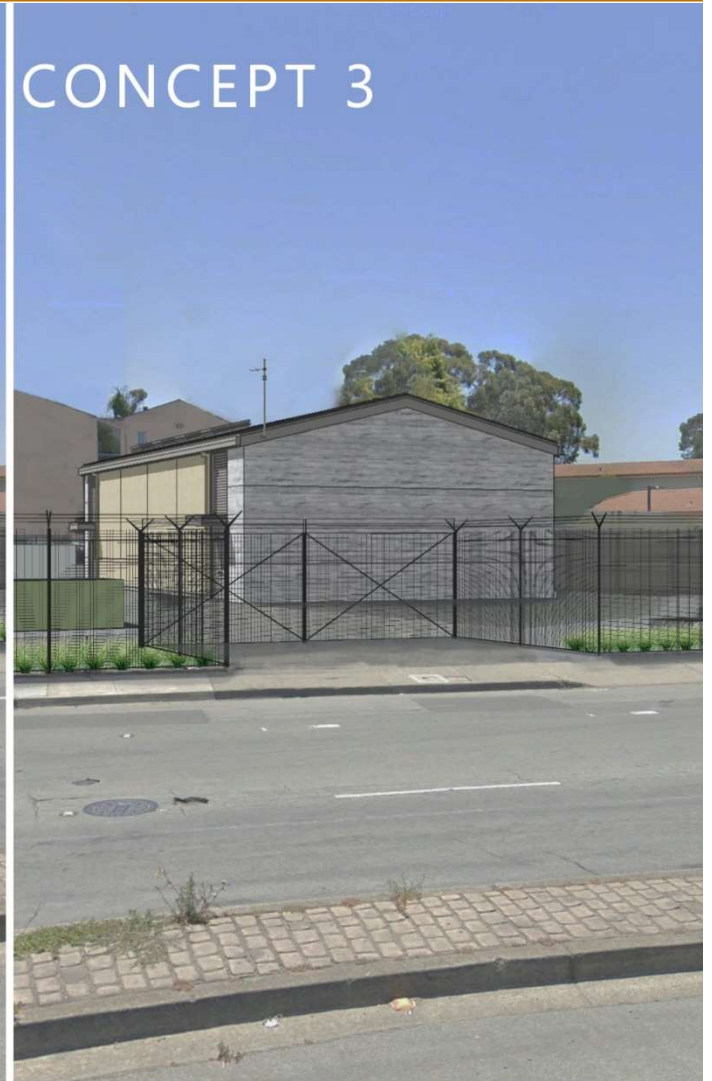
CONCEPT 1



CONCEPT 2



CONCEPT 3



Thank You



More information and tonight's presentation can be found at the **Project Website:**
www.ebmud.com/WildcatPP

Send comments on design concepts to
WildcatPP@ebmud.com by February 25, 2021

Questions should be directed to Sharla Sullivan at
sharla.sullivan@ebmud.com