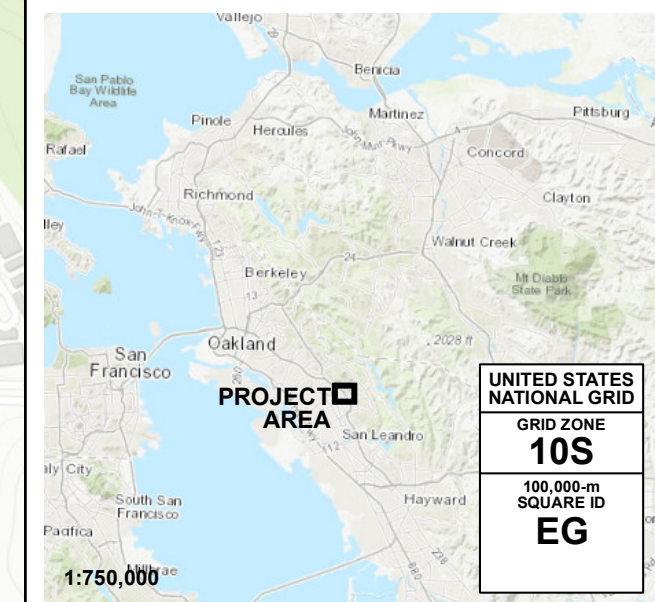




INUNDATION MAP FOR HYPOTHETICAL FAILURE OF
USL CLEARWELL RESERVOIR
(NE AND SE DAM BREACH)
 ALAMEDA COUNTY, CA

SCENARIO: SUNNY DAY	PREP. DATE: JUN 2021	SHEET NO.: INDEX	DWR DAM NO.: N/A	NATIONAL DAM ID NO.: N/A
------------------------	-------------------------	---------------------	---------------------	-----------------------------



LEGEND

ARRIVAL TIME (MIN) FOR 1 FOOT OF WATER	MAXIMUM DEPTH (FEET)
UNDERGROUND CULVERT/STORM DRAIN	1 - 2
DAM	2 - 3
MAP BOOK GRID	3 - 4
	4 - 5
	5 - 6
	> 6

NOTES:

- The information shown on the inundation map is approximate and should only be used as a guideline for emergency response and preparation purposes. It does not represent the integrity or safety of USL Clearwell Dam.
- The dam breach analysis was performed April 2, 2021 using the program HEC-RAS, Version 5.0.7. Elevations in the study reference NAVD88.
- The Southeast (SE) and Northeast (NE) breach locations were simulated as independent scenarios in HEC-RAS. Within areas of overlapping downstream impact, mapping results reflect the maximum values between the simulated breach scenarios.
- Maximum velocity depends on factors such as ground slope and roughness, and therefore varies.
- Security-sensitive infrastructure may not be shown on this map.

MAP PROJECTION:
 California Teale Albers (feet), NAD83

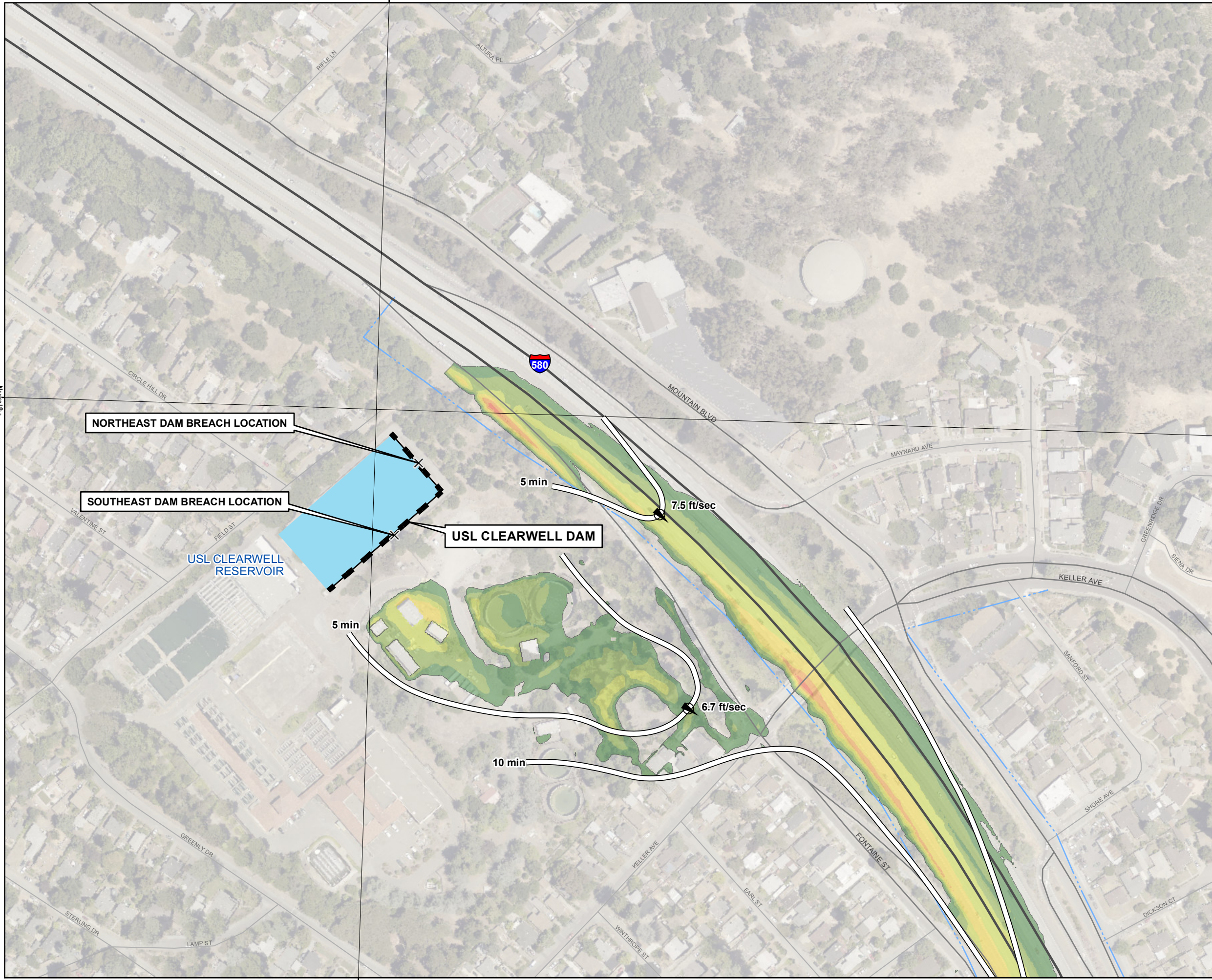
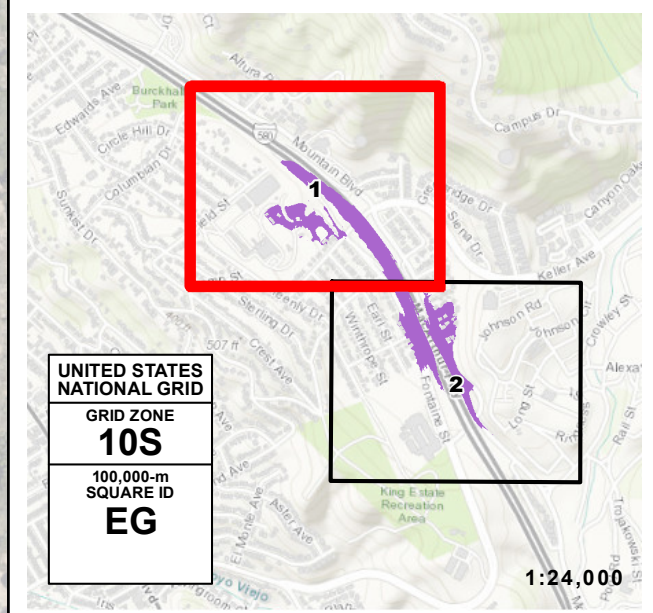
SCALE IN FEET (1 INCH=500 FEET)

0 500 1,000

REGISTERED PROFESSIONAL ENGINEER
 PEAN M. TODARO
 No. C64457
 CIVIL
 STATE OF CALIFORNIA

REFERENCE:
 GRID OVERLAY, United States National Grid (meters), NAD83
 GRATICULE, Geographic Coordinate System, NAD83 (DDM)

SCENARIO: SUNNY DAY	PREP. DATE: JUN 2021	SHEET NO.: 1 OF 2	DWR DAM NO.: N/A	NATIONAL DAM ID NO.: N/A
-------------------------------	--------------------------------	-----------------------------	----------------------------	------------------------------------



FLOOD WAVE

MAXIMUM DEPTH (FEET)

- 1 - 2
- 2 - 3
- 3 - 4
- 4 - 5
- 5 - 6
- > 6

ARRIVAL TIME (MIN) FOR 1 FT OF WATER

MAXIMUM VELOCITY AND DIRECTION AT SELECTED LOCATION

UNDERGROUND CULVERT/STORM DRAIN

DAM

NOTES:

- The information shown on the inundation map is approximate and should only be used as a guideline for emergency response and preparation purposes. It does not represent the integrity or safety of USL Clearwell Dam.
- The dam breach analysis was performed April 2, 2021 using the program HEC-RAS, Version 5.0.7. Elevations in the study reference NAVD88.
- The Southeast (SE) and Northeast (NE) breach locations were simulated as independent scenarios in HEC-RAS. Within areas of overlapping downstream impact, mapping results reflect the maximum values between the simulated breach scenarios.
- Maximum velocity depends on factors such as ground slope and roughness, and therefore varies.
- Security-sensitive infrastructure may not be shown on this map.

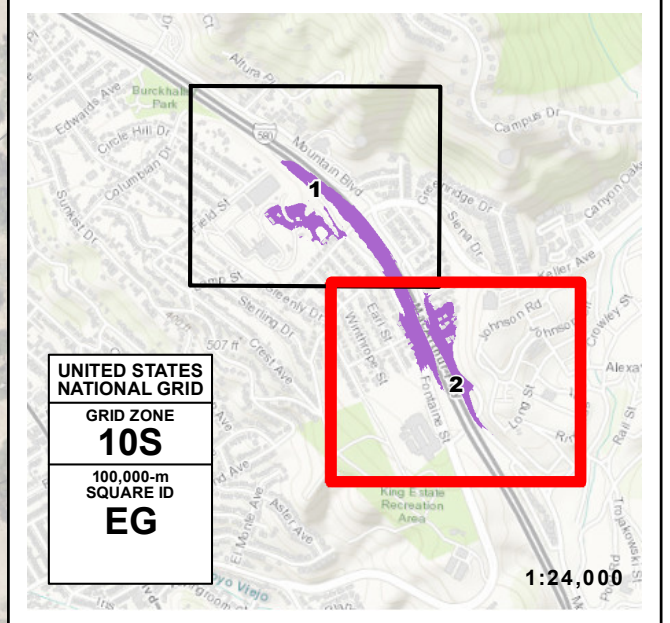
MAP PROJECTION:
California Teale Albers (feet), NAD83

SCALE IN FEET (1 INCH=200 FEET)

REFERENCE:
GRID OVERLAY, United States National Grid (meters), NAD83
GRATICULE, Geographic Coordinate System, NAD83 (DDM)



INUNDATION MAP FOR HYPOTHETICAL FAILURE OF USL CLEARWELL RESERVOIR (NE & SE DAM BREACH) ALAMEDA COUNTY, CA				
SCENARIO: SUNNY DAY	PREP. DATE: JUN 2021	SHEET NO.: 2 OF 2	DWR DAM NO.: N/A	NATIONAL DAM ID NO.: N/A



FLOOD WAVE

MAXIMUM DEPTH (FEET)

	1 - 2
	2 - 3
	3 - 4
	4 - 5
	5 - 6
	> 6

- ARRIVAL TIME (MIN) FOR 1 FT OF WATER
- MAXIMUM VELOCITY AND DIRECTION AT SELECTED LOCATION
- UNDERGROUND CULVERT/STORM DRAIN

NOTES:

- The information shown on the inundation map is approximate and should only be used as a guideline for emergency response and preparation purposes. It does not represent the integrity or safety of USL Clearwell Dam.
- The dam breach analysis was performed April 2, 2021 using the program HEC-RAS, Version 5.0.7. Elevations in the study reference NAVD88.
- The Southeast (SE) and Northeast (NE) breach locations were simulated as independent scenarios in HEC-RAS. Within areas of overlapping downstream impact, mapping results reflect the maximum values between the simulated breach scenarios.
- Maximum velocity depends on factors such as ground slope and roughness, and therefore varies.
- Security-sensitive infrastructure may not be shown on this map.

MAP PROJECTION:
California Teale Albers (feet), NAD83

SCALE IN FEET (1 INCH=200 FEET)

REFERENCE:
GRID OVERLAY, United States National Grid (meters), NAD83
GRATICULE, Geographic Coordinate System, NAD83 (DDM)

37°46'N

75

122°9'W

122°9'W

57500mE