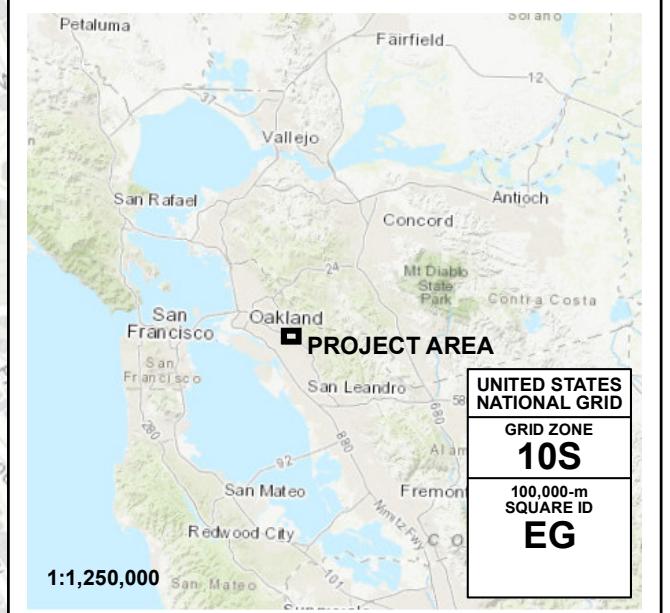


EBMUD INUNDATION MAP FOR HYPOTHETICAL FAILURE OF
39TH AVENUE MAIN DAM (WEST BREACH)
 ALAMEDA COUNTY, CA

SCENARIO: SUNNY DAY	PREP. DATE: JUN 2021	SHEET NO.: INDEX	DWR DAM NO.: N/A	NATIONAL DAM ID NO.: N/A
-------------------------------	--------------------------------	----------------------------	----------------------------	------------------------------------



LEGEND

ARRIVAL TIME (MIN) FOR 1 FOOT OF WATER	MAXIMUM DEPTH (FEET)
STREAM CENTERLINE	1 - 2
DAM	2 - 3
MAP BOOK GRID	3 - 4
	4 - 6
	6 - 8
	> 8

NOTES:

- The information shown on the inundation map is approximate and should only be used as a guideline for emergency response and preparation purposes. It does not represent the integrity or safety of 39th Avenue Main Dam.
- The dam breach analysis was performed February 17, 2021 using the program HEC-RAS, Version 5.0.7. Elevations in the study reference NAVD88.
- The Main Dam (West) and Auxiliary Dam (East) breach locations were simulated as independent scenarios in HEC-RAS. Mapping results reflect independent conditions corresponding to each simulated breach scenario.
- Maximum velocity depends on factors such as ground slope and roughness, and therefore varies.
- Security-sensitive infrastructure may not be shown on this map.

MAP PROJECTION:
California Teale Albers (feet), NAD83

SCALE IN FEET (1 INCH=700 FEET)

REFERENCE:
GRID OVERLAY, United States National Grid (meters), NAD83
GRATICULE, Geographic Coordinate System, NAD83 (DDM)

37°48'N
41°33'00"N
570
570

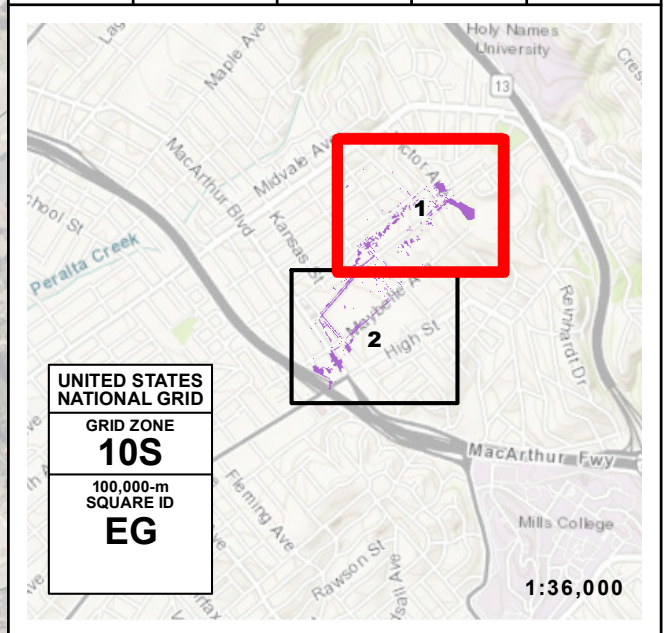
122°12'W
122°11'W
84
71
72

37°48'N
37°48'N
122°11'W
122°11'W
72
72



EBMUD INUNDATION MAP FOR HYPOTHETICAL FAILURE OF
39TH AVENUE MAIN DAM (WEST BREACH)
 ALAMEDA COUNTY, CA

SCENARIO: SUNNY DAY	PREP. DATE: JUN 2021	SHEET NO.: 1 OF 2	DWR DAM NO.: N/A	NATIONAL DAM ID NO.: N/A
-------------------------------	--------------------------------	-----------------------------	----------------------------	------------------------------------



FLOOD WAVE MAXIMUM DEPTH (FEET)

- 1 - 2
- 2 - 3
- 3 - 4
- 4 - 6
- 6 - 8
- > 8

ARRIVAL TIME (MIN) FOR 1 FT OF WATER

MAXIMUM VELOCITY AND DIRECTION AT SELECTED LOCATION

NOTES:

- The information shown on the inundation map is approximate and should only be used as a guideline for emergency response and preparation purposes. It does not represent the integrity or safety of 39th Avenue Main Dam.
- The dam breach analysis was performed February 17, 2021 using the program HEC-RAS, Version 5.0.7. Elevations in the study reference NAVD88.
- The Main Dam (West) and Auxiliary Dam (East) breach locations were simulated as independent scenarios in HEC-RAS. Mapping results reflect independent conditions corresponding to each simulated breach scenario.
- Maximum velocity depends on factors such as ground slope and roughness, and therefore varies.
- Security-sensitive infrastructure may not be shown on this map.

MAP PROJECTION:
California Teale Albers (feet), NAD83

SCALE IN FEET (1 INCH=200 FEET)

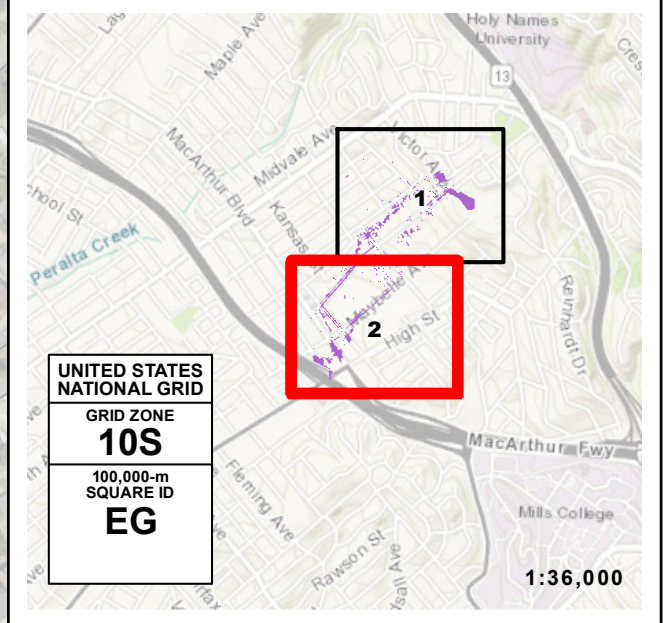
0 100 200 300 400

REFERENCE:
GRID OVERLAY, United States National Grid (meters), NAD83
GRATICULE, Geographic Coordinate System, NAD83 (DDM)



EBMUD INUNDATION MAP FOR HYPOTHETICAL FAILURE OF
39TH AVENUE MAIN DAM (WEST BREACH)
 ALAMEDA COUNTY, CA

SCENARIO: SUNNY DAY	PREP. DATE: JUN 2021	SHEET NO.: 2 OF 2	DWR DAM NO.: N/A	NATIONAL DAM ID NO.: N/A
-------------------------------	--------------------------------	-----------------------------	----------------------------	------------------------------------



FLOOD WAVE MAXIMUM DEPTH (FEET)

- 1 - 2
- 2 - 3
- 3 - 4
- 4 - 6
- 6 - 8
- > 8

ARRIVAL TIME (MIN) FOR 1 FT OF WATER

SCHOOLS (Yellow 'S' icon)

MAXIMUM VELOCITY AND DIRECTION AT SELECTED LOCATION (Velocity vector icon)

NOTES:

- The information shown on the inundation map is approximate and should only be used as a guideline for emergency response and preparation purposes. It does not represent the integrity or safety of 39th Avenue Main Dam.
- The dam breach analysis was performed February 17, 2021 using the program HEC-RAS, Version 5.0.7. Elevations in the study reference NAVD88.
- The Main Dam (West) and Auxiliary Dam (East) breach locations were simulated as independent scenarios in HEC-RAS. Mapping results reflect independent conditions corresponding to each simulated breach scenario.
- Maximum velocity depends on factors such as ground slope and roughness, and therefore varies.
- Security-sensitive infrastructure may not be shown on this map.

MAP PROJECTION:
California Teale Albers (feet), NAD83

SCALE IN FEET (1 INCH=200 FEET)

0 100 200 300 400

REFERENCE:
GRID OVERLAY, United States National Grid (meters), NAD83
GRATICULE, Geographic Coordinate System, NAD83 (DDM)

4183000mN

71

571000mE