

**INUNDATION MAP FOR HYPOTHETICAL FAILURE OF
39TH AVENUE AUXILIARY DAM
(EAST BREACH)
ALAMEDA COUNTY, CA**

SCENARIO: SUNNY DAY	PREP. DATE: JUN 2021	SHEET NO.: INDEX	DWR DAM NO.: N/A	NATIONAL DAM ID NO.: N/A
-------------------------------	--------------------------------	----------------------------	----------------------------	------------------------------------



LEGEND

ARRIVAL TIME (MIN) FOR 1 FOOT OF WATER	MAXIMUM DEPTH (FEET)
STREAM CENTERLINE	1 - 2
UNDERGROUND CULVERT/STORM DRAIN	2 - 3
DAM	3 - 4
MAP BOOK GRID	4 - 6
	6 - 8
	> 8

NOTES:

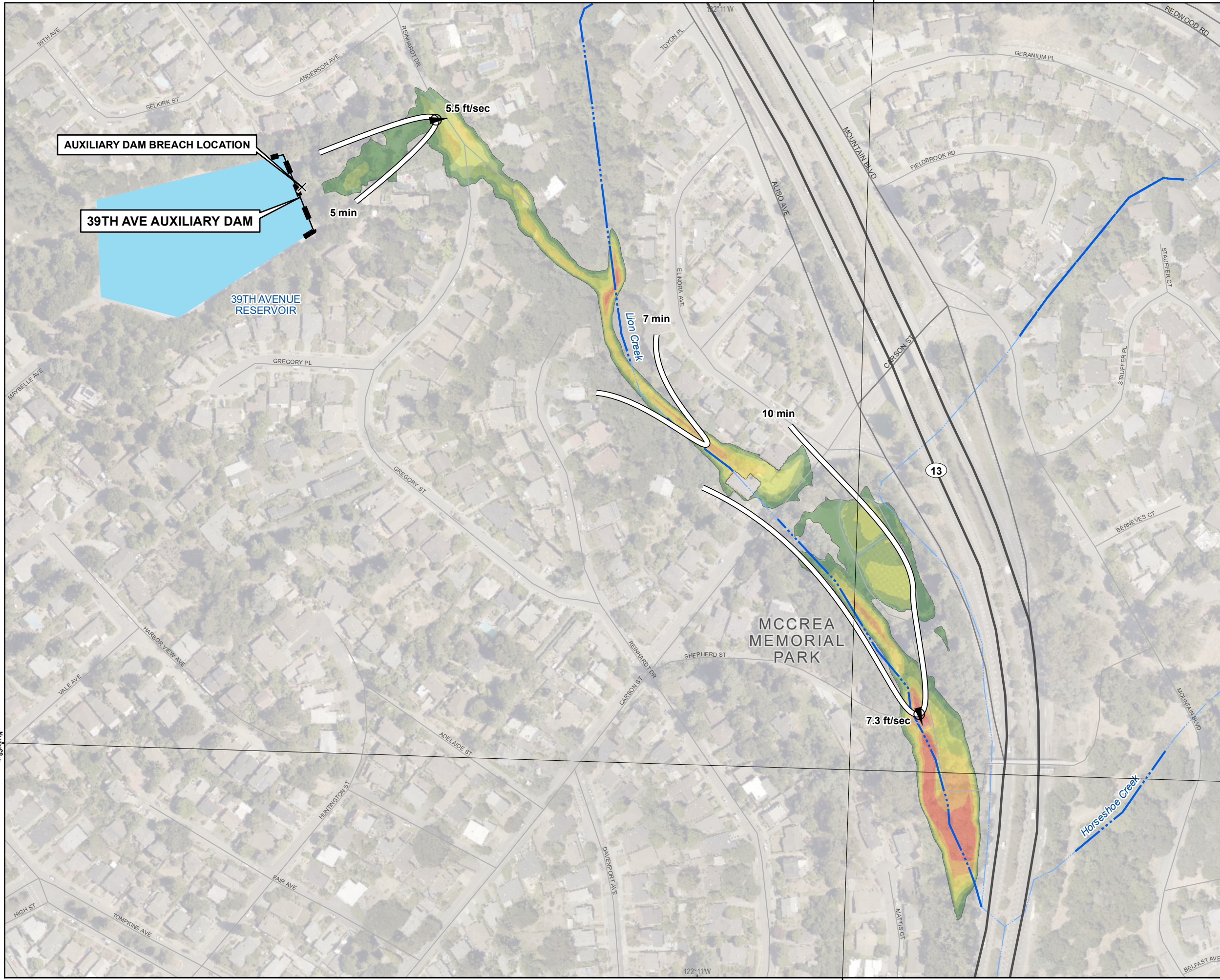
- The information shown on the inundation map is approximate and should only be used as a guideline for emergency response and preparation purposes. It does not represent the integrity or safety of 39th Avenue Main Dam.
- The dam breach analysis was performed February 17, 2021 using the program HEC-RAS, Version 5.0.7. Elevations in the study reference NAVD88.
- The Main Dam (West) and Auxiliary Dam (East) breach locations were simulated as independent scenarios in HEC-RAS. Mapping results reflect independent conditions corresponding to each simulated breach scenario.
- Maximum velocity depends on factors such as ground slope and roughness, and therefore varies.
- Security-sensitive infrastructure may not be shown on this map.

MAP PROJECTION:
California Teale Albers (feet), NAD83

SCALE IN FEET (1 INCH=800 FEET)

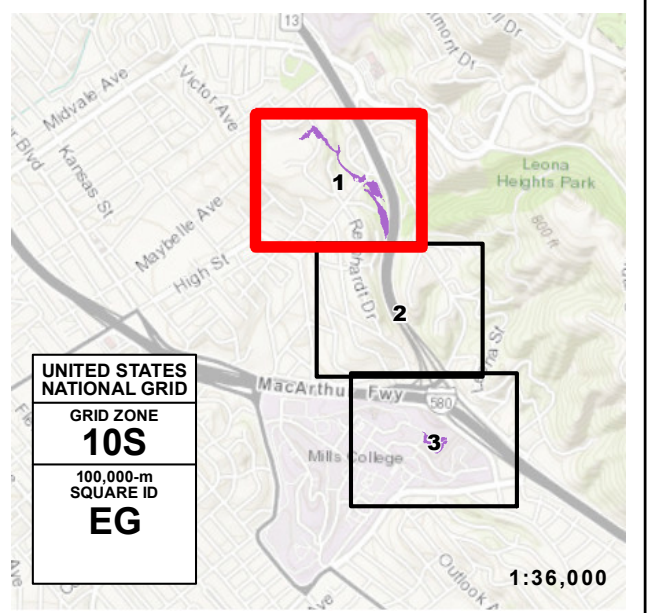
0 500 1,000 1,500

REFERENCE:
GRID OVERLAY, United States National Grid (meters), NAD83
GRATICULE, Geographic Coordinate System, NAD83 (DDM)



**INUNDATION MAP FOR HYPOTHETICAL FAILURE OF
39TH AVENUE AUXILIARY DAM
(EAST BREACH)
ALAMEDA COUNTY, CA**

SCENARIO: SUNNY DAY	PREP. DATE: JUN 2021	SHEET NO.: 1 OF 3	DWR DAM NO.: N/A	NATIONAL DAM ID NO.: N/A
-------------------------------	--------------------------------	-----------------------------	----------------------------	------------------------------------



FLOOD WAVE

MAXIMUM DEPTH (FEET)

- 1 - 2
- 2 - 3
- 3 - 4
- 4 - 6
- 6 - 8
- > 8

ARRIVAL TIME (MIN) FOR 1 FT OF WATER

STREAM CENTERLINE

UNDERGROUND CULVERT/STORM DRAIN

MAXIMUM VELOCITY AND DIRECTION AT SELECTED LOCATION

- NOTES:**
- The information shown on the inundation map is approximate and should only be used as a guideline for emergency response and preparation purposes. It does not represent the integrity or safety of 39th Avenue Auxiliary Dam.
 - The dam breach analysis was performed February 17, 2021 using the program HEC-RAS, Version 5.0.7. Elevations in the study reference NAVD88.
 - The Main Dam (West) and Auxiliary Dam (East) breach locations were simulated as independent scenarios in HEC-RAS. Mapping results reflect independent conditions corresponding to each simulated breach scenario.
 - Maximum velocity depends on factors such as ground slope and roughness, and therefore varies.
 - Security-sensitive infrastructure may not be shown on this map.

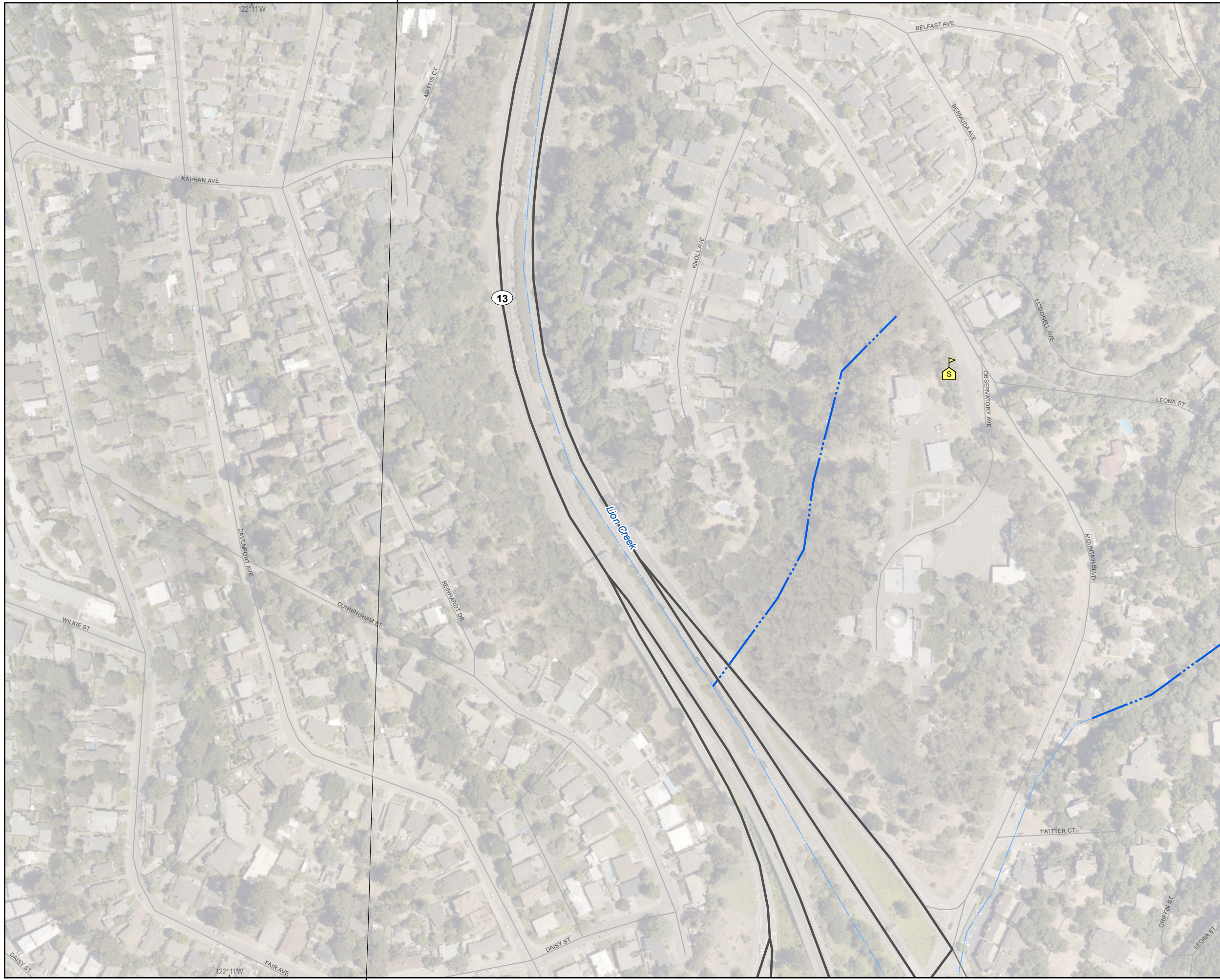
MAP PROJECTION:
California Teale Albers (feet), NAD83

SCALE IN FEET (1 INCH=200 FEET)

REFERENCE:
GRID OVERLAY, United States National Grid (meters), NAD83
GRATICULE, Geographic Coordinate System, NAD83 (DDM)

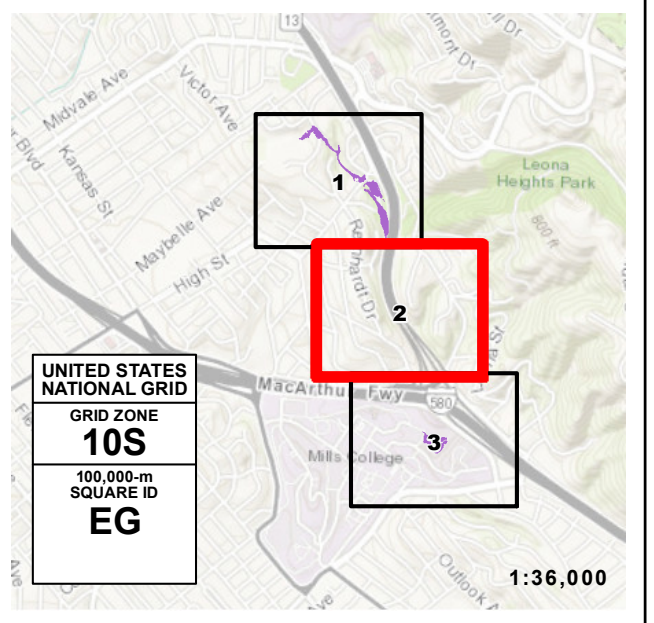
4183000mN

572000mE



EBMUD INUNDATION MAP FOR HYPOTHETICAL FAILURE OF
39TH AVENUE AUXILIARY DAM (EAST BREACH)
 ALAMEDA COUNTY, CA

SCENARIO: SUNNY DAY	PREP. DATE: JUN 2021	SHEET NO.: 2 OF 3	DWR DAM NO.: N/A	NATIONAL DAM ID NO.: N/A
-------------------------------	--------------------------------	-----------------------------	----------------------------	------------------------------------



UNITED STATES NATIONAL GRID
 GRID ZONE
10S
 100,000-m SQUARE ID
EG

FLOOD WAVE MAXIMUM DEPTH (FEET)

	1 - 2		SCHOOLS
	2 - 3		STREAM CENTERLINE
	3 - 4		UNDERGROUND CULVERT/STORM DRAIN
	4 - 6		
	6 - 8		
	> 8		

NOTES:

- The information shown on the inundation map is approximate and should only be used as a guideline for emergency response and preparation purposes. It does not represent the integrity or safety of 39th Avenue Auxiliary Dam.
- The dam breach analysis was performed February 17, 2021 using the program HEC-RAS, Version 5.0.7. Elevations in the study reference NAVD88.
- The Main Dam (West) and Auxiliary Dam (East) breach locations were simulated as independent scenarios in HEC-RAS. Mapping results reflect independent conditions corresponding to each simulated breach scenario.
- Maximum velocity depends on factors such as ground slope and roughness, and therefore varies.
- Security-sensitive infrastructure may not be shown on this map.

MAP PROJECTION:
 California Teale Albers (feet), NAD83

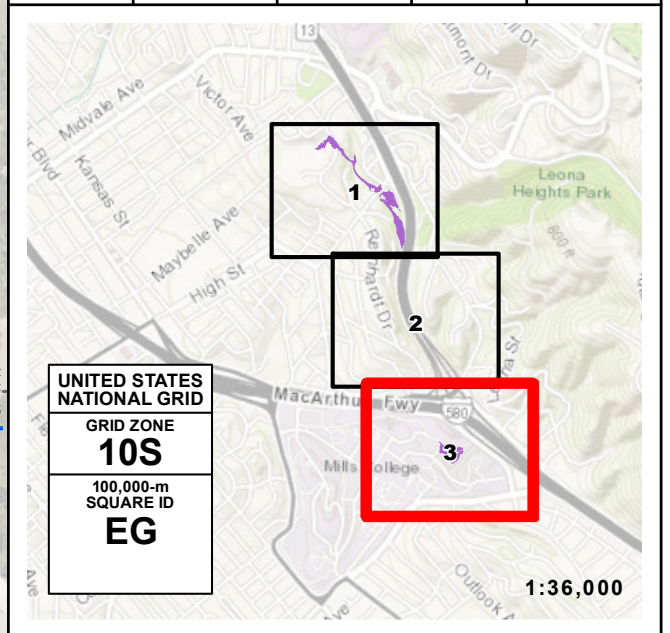
SCALE IN FEET (1 INCH=200 FEET)

REFERENCE:
 GRID OVERLAY, United States National Grid (meters), NAD83
 GRATICULE, Geographic Coordinate System, NAD83 (DDM)



EBMUD INUNDATION MAP FOR HYPOTHETICAL FAILURE OF
39TH AVENUE AUXILIARY DAM (EAST BREACH)
 ALAMEDA COUNTY, CA

SCENARIO: SUNNY DAY	PREP. DATE: JUN 2021	SHEET NO.: 3 OF 3	DWR DAM NO.: N/A	NATIONAL DAM ID NO.: N/A
-------------------------------	--------------------------------	-----------------------------	----------------------------	------------------------------------



UNITED STATES NATIONAL GRID
 GRID ZONE **10S**
 100,000-m SQUARE ID **EG**

FLOOD WAVE
MAXIMUM DEPTH (FEET)

1 - 2
2 - 3
3 - 4
4 - 6
6 - 8
> 8

ARRIVAL TIME (MIN) FOR 1 FT OF WATER
 STREAM CENTERLINE
 UNDERGROUND CULVERT/STORM DRAIN
 MAXIMUM VELOCITY AND DIRECTION AT SELECTED LOCATION

NOTES:

- The information shown on the inundation map is approximate and should only be used as a guideline for emergency response and preparation purposes. It does not represent the integrity or safety of 39th Avenue Auxiliary Dam.
- The dam breach analysis was performed February 17, 2021 using the program HEC-RAS, Version 5.0.7. Elevations in the study reference NAVD88.
- The Main Dam (West) and Auxiliary Dam (East) breach locations were simulated as independent scenarios in HEC-RAS. Mapping results reflect independent conditions corresponding to each simulated breach scenario.
- Maximum velocity depends on factors such as ground slope and roughness, and therefore varies.
- Security-sensitive infrastructure may not be shown on this map.

MAP PROJECTION:
 California Teale Albers (feet), NAD83

SCALE IN FEET (1 INCH=200 FEET)

REFERENCE:
 GRID OVERLAY, United States National Grid (meters), NAD83
 GRATICULE, Geographic Coordinate System, NAD83 (DDM)