

East Bay Plain Subbasin  
Sustainable Groundwater Management

**STAKEHOLDER  
COMMUNICATION &  
ENGAGEMENT PLAN**  
March 2023



# Table of Contents

1. Introduction .....	2
2. Objectives .....	5
3. Stakeholder Communication and Engagement Goal.....	5
4. Commitment to the Public and Stakeholders .....	5
5. Our Stakeholders .....	5
6. GSAs Decision-Making Process .....	7
7. How can members of the public and stakeholders get involved in the sustainable groundwater management process? .....	10
8. Desired Outcomes .....	10
9. Communication and Engagement Venues .....	12
10. Summary .....	14
Appendix A: Stakeholders List.....	15

## 1. Introduction

As required by the State of California's Sustainable Groundwater Management Act (SGMA), East Bay Municipal Utility District's (EBMUD) Board of Directors and the City of Hayward's City Council adopted a Groundwater Sustainability Plan (GSP) for the East Bay Plain Subbasin<sup>1</sup> (see Figure 1) in December 2021. EBMUD and the City of Hayward are the designated Groundwater Sustainability Agencies (GSAs) for the Subbasin, and through an existing cooperating agreement, completed and submitted the GSP to the Department of Water Resources (DWR) on January 26, 2022. The GSP was developed with significant stakeholder engagement and input from 2018 to 2021, with a total of 22 stakeholder meetings held throughout the development process.

Following submittal of the GSP to DWR, the GSAs are required to implement the GSP. During GSP implementation, public outreach and engagement will continue with the basin stakeholders. The purpose of this stakeholder communication and engagement plan (C&E plan) is to outline the process for ensuring public and stakeholders' involvement during the implementation of the GSP for the East Bay Plain Subbasin.

Figure 1 indicates the portions of the East Bay Plain Subbasin covered by EBMUD and the City of Hayward as the GSA in their respective areas. EBMUD and the City of Hayward are jointly implementing stakeholder communication and engagement activities for the Subbasin and both are referenced in this document as GSAs.

EBMUD and the City of Hayward's websites ([www.ebmud.com/sgma](http://www.ebmud.com/sgma) and [www.hayward-ca.gov/sgma](http://www.hayward-ca.gov/sgma)) contain the GSAs' current SGMA information, documents, and useful links. Stakeholders can also sign up for the GSAs' SGMA email lists. This C&E plan outlines a roadmap to create common understanding and transparency throughout the GSP

---

<sup>1</sup> The East Bay Plain Subbasin (Basin No. 2-009.04) is a medium priority basin which extends across portions of Contra Costa County and Alameda County and is bounded by the Hayward Fault zone in the east and the San Francisco Bay in the north and the west. In the south, it is located adjacent to the Niles Cones Subbasin (Basin No. 2-009.01).

implementation process. The GSAs will use this plan to engage with and gather input from various stakeholders to support the implementation of the GSP for the East Bay Plain Subbasin.

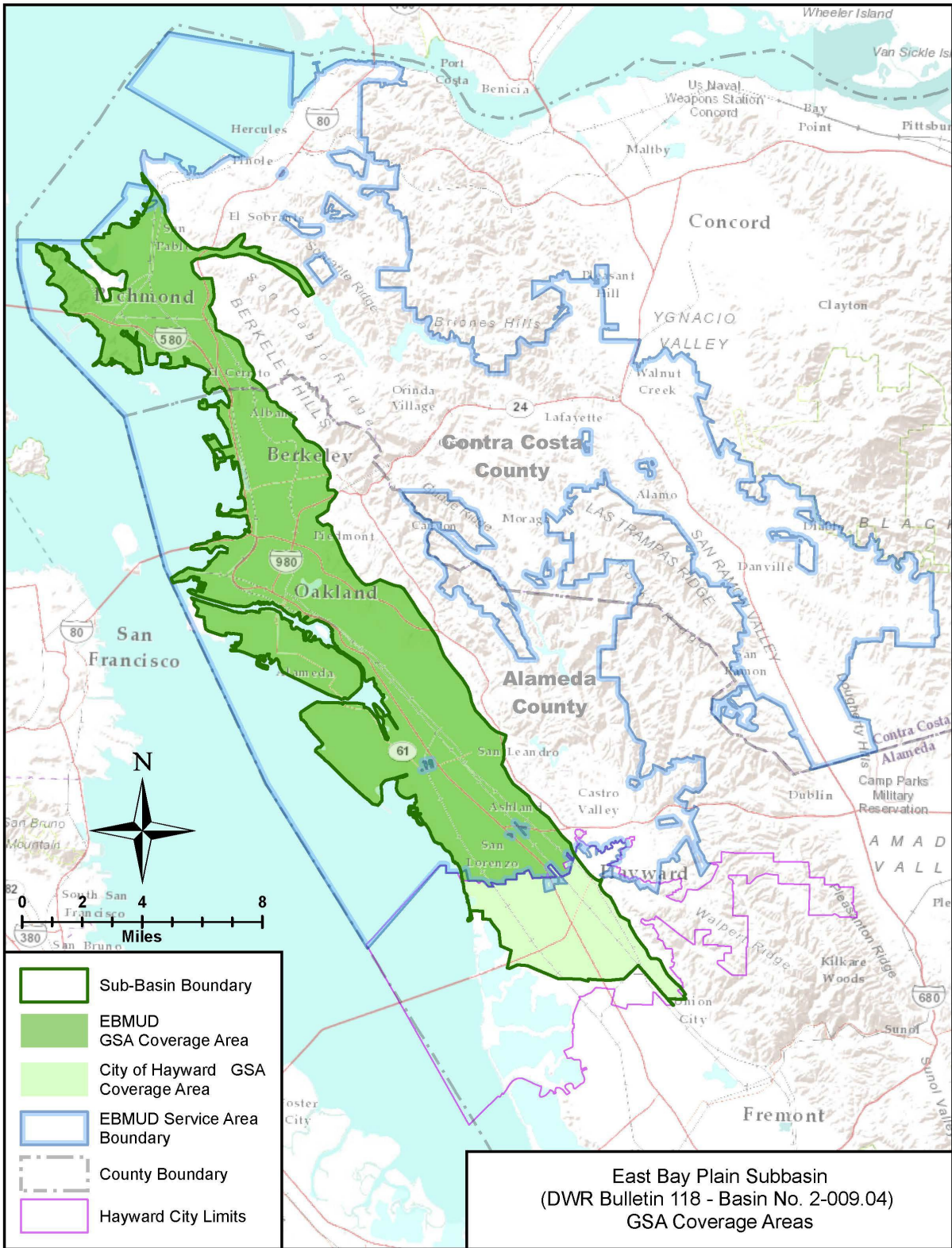


Figure 1. East Bay Plain Subbasin and GSA Coverage Area

## **2. Objectives**

In compliance with GSP Regulations (Section 354.10), the objectives of this plan are:

1. To explain the GSAs' decision-making process
2. To identify opportunities for public engagement and discuss how public input and response will be used
3. To describe how the GSAs encourage the active involvement of diverse social, cultural, and economic elements of the population within the basin
4. To outline the methods the GSAs shall follow to inform the public about progress implementing the Plan, including the status of projects and actions

## **3. Stakeholder Communication and Engagement Goal**

Our goal is to involve stakeholders and the public throughout the GSP implementation process to ensure stakeholders' concerns, issues and aspirations are consistently understood and considered in the GSAs' decision-making process.

## **4. Commitment to the Public and Stakeholders**

EBMUD and the City of Hayward developed a single GSP for the entire East Bay Plain Subbasin and submitted the GSP to the Department of Water Resources on January 26, 2022. We commit to safeguard our local groundwater resources through sustainable management and to preserve this invaluable water supply source for future generations. We commit to work with stakeholders to ensure that their concerns and inputs are considered in the GSP implementation.

## **5. Our Stakeholders**

The East Bay Plain Subbasin spans over two counties and several cities with industrial zones, urban areas, transportation corridors, and natural landscape. It covers a wide range of stakeholder interests – general public, land use authorities, private users, urban users, business interests,

public agencies, water service providers, and environmental interests. Disadvantaged and severely disadvantaged communities (DACs and SDACs) make up about 36% of the Subbasin as shown in Figure 2<sup>2</sup> and are located relatively uniformly throughout the Subbasin.

California Water Code (CWC) §10723.4 requires GSAs to establish and maintain a list of persons interested in receiving notices regarding plan preparation, meeting announcements, and availability of draft plans, maps, and other relevant documents. Any person may request, in writing, to be placed on the list of interested persons. Appendix A includes a list of stakeholders identified at this time. The stakeholder list will be periodically updated as needed.

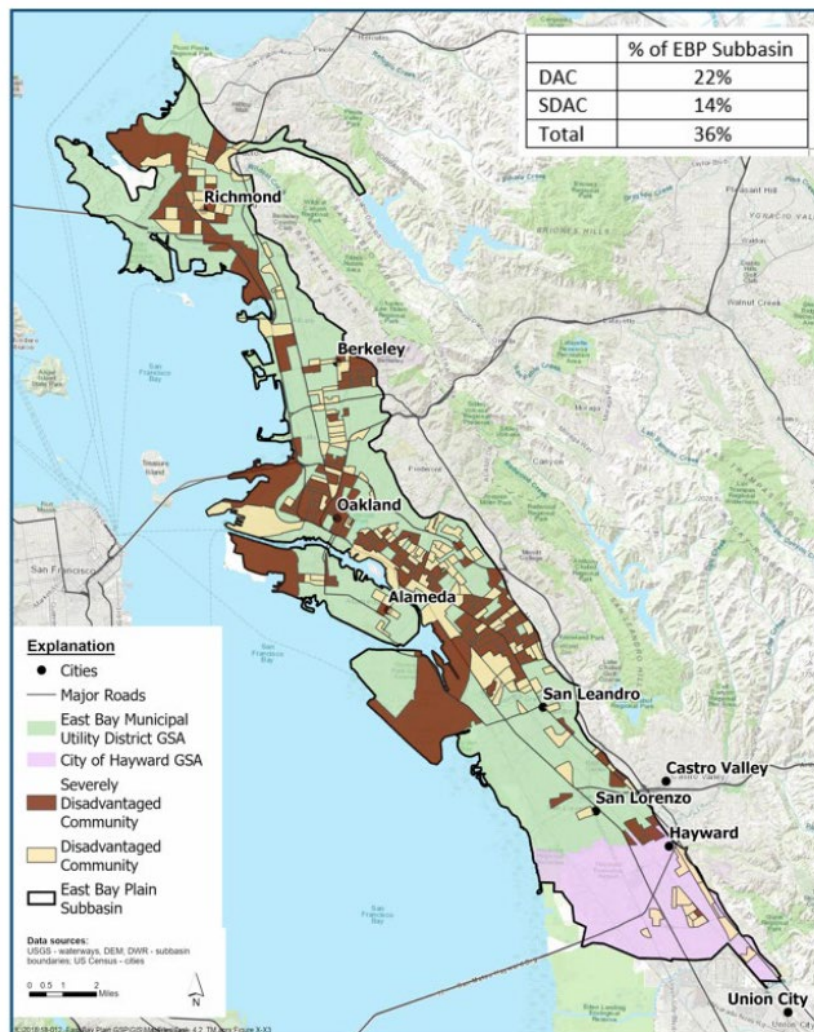


Figure 2. Map of Disadvantaged Communities in the East Bay Plain Subbasin

<sup>2</sup> Disadvantaged communities identified with DWR’s DAC Mapping Tool and United States census data.

## **6. GSAs Decision-Making Process**

The following flow chart shows the East Bay Plain Subbasin GSAs' Joint Decision-Making Process to develop and implement the GSP for the East Bay Plain Subbasin.

As SGMA intended, the GSP development and implementation is a locally driven process with stakeholder active participation. DWR has the authority to review and approve, approve with modification or reject the submitted GSPs. The East Bay Plain Subbasin GSP was submitted to DWR on January 26, 2022 and is still under review by DWR. Stakeholders and the public were given a 90-day window, which closed on April 23, 2022, to review and comment on the submitted draft GSP during DWR's approval process. Upon completion of DWR's review, EBMUD and the City of Hayward will be responsible for finalizing the GSP or modifying it to meet DWR's requirements.

### ***EBMUD GSA***

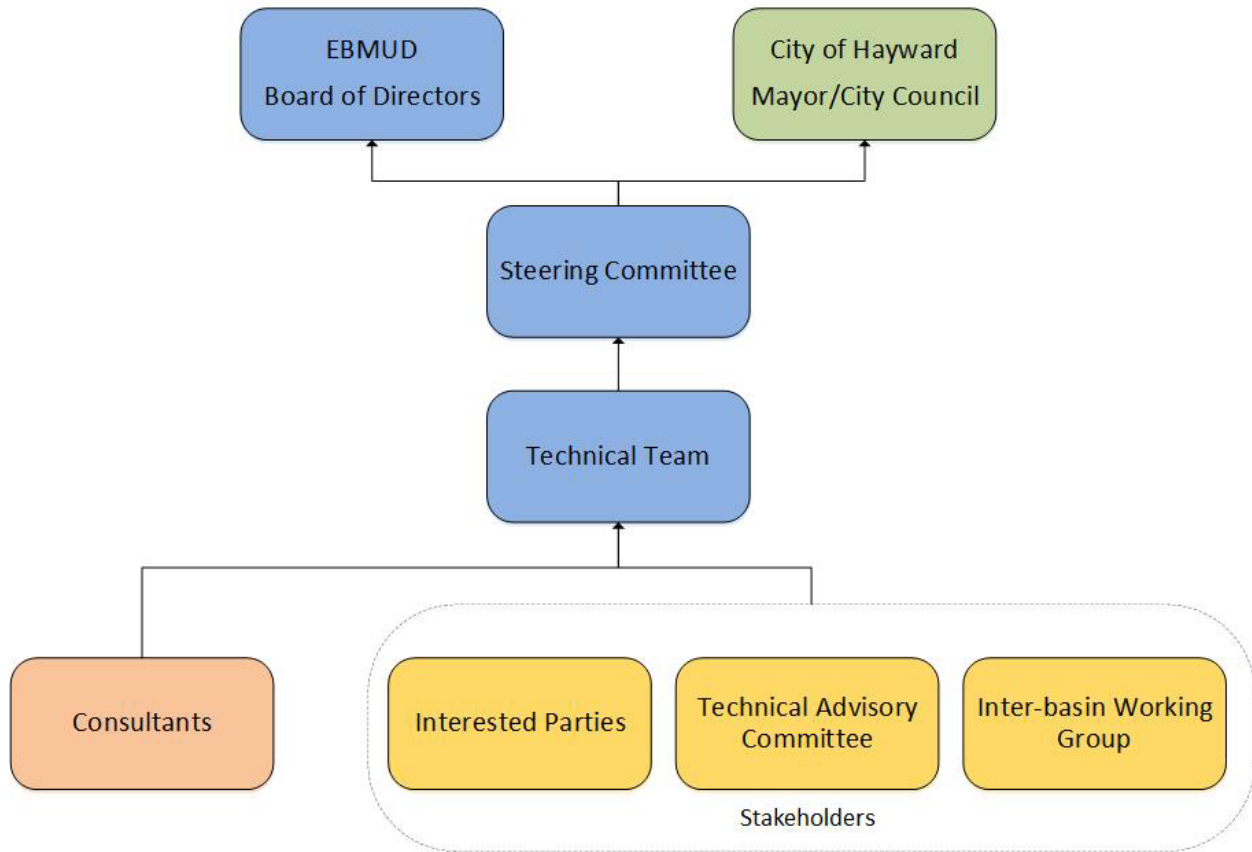
EBMUD is a publicly-owned utility formed under the Municipal Utility District Act (MUD Act) passed by the California Legislature in 1921. The MUD Act, as codified by the Public Utilities Code of the State of California, authorizes the formation and governance of the District. EBMUD has a seven-member Board of Directors publicly elected from wards within the EBMUD service area. The Board is committed to developing policy through an open, public process. The Board of Directors meets twice a month on the second and fourth Tuesday and at other times as needed. EBMUD Board of Directors will be the governing body of the EBMUD GSA and it will hold ultimate decision-making authority.

### ***Hayward GSA***

The City of Hayward is a charter city, governed by a Mayor and six-member City Council, elected at large and representing the entire City. Hayward is committed to community engagement and transparency in decision making. The City Council meets the first, third and fourth Tuesdays of each month at 7 p.m. and will be the governing authority of the Hayward GSA.



## East Bay Plain Subbasin GSA'S Joint Decision Making Process



### ***GSAs' Governing Bodies***

The GSAs' governing bodies are the **Board of Directors** for EBMUD, and the **Mayor and City Council** for the City of Hayward. These bodies will have ultimate decision-making authority and can override the Steering Committee's recommendations. Stakeholders will have an option to appear before these bodies if they find that their concerns and/or issues were not sufficiently addressed.

### ***Steering Committee***

The Steering Committee is composed of senior staff from the two GSAs who oversee and

guide the Technical Team in developing the GSP. It is also responsible for briefing the governing bodies of GSAs and seeking approvals.

### ***Technical Team***

The Technical Team, consisting of staff from EBMUD and the City of Hayward, is responsible for developing and implementing the GSP and overseeing consultants. The Technical Team will actively engage with all stakeholders. It will be also keep the Steering Committee updated and make recommendations at key decision points.

### ***Consultants***

During GSP development, a team of consultants conducted technical studies and investigations, including groundwater modeling, and prepared the GSP documents with input from the stakeholders. The Technical Team will oversee and manage future consultant work during GSP implementation.

### ***Public/Interested Parties***

This category will cover most of the stakeholders. Members of the public and interested parties from the Subbasin area can participate in public meetings and hearings, and communicate with GSA staff to provide input, obtain information, and review and comment on GSP documents. The Technical Team will take public input into consideration in implementing the GSP.

### ***Technical Advisory Committee (TAC)***

The TAC is comprised of individuals who have relevant technical backgrounds related to groundwater or water supply management, including groundwater users, regulators, environmental specialists and researchers. The role of the TAC team is to review technical work products, comment and offer recommendations.

During the early phases of GSP development, the GSAs sought out individuals with technical expertise to serve on the TAC. Each member was chosen for their experience as well as the diversity of their perspective. During GSP implementation, separate meetings with the TAC will likely only be held when the GSP is undergoing its five-year update. The

TAC members will continue to be invited to participate in the stakeholder meetings with all the interested parties.

### ***Inter-basin Working Group (IWG)***

The IWG is comprised of representatives from neighboring basins/subbasins and regional groundwater interests. During GSP development, the IWG met periodically to discuss development updates, share information and data, coordinate on SGMA compliance coordination and provided input on their respective GSPs. During GSP implementation, the representatives will continue to periodically meet to continue to coordinate and provide updates on projects and management actions.

## **7. How can members of the public and stakeholders get involved in the sustainable groundwater management process?**

Public and stakeholder participation is vital to the implementation of the East Bay Plain Subbasin GSP. Interested parties can review the content on the websites ([www.ebmud.com/sgma](http://www.ebmud.com/sgma) and [www.hayward-ca.gov/sgma](http://www.hayward-ca.gov/sgma)) and sign up for the GSAs' SGMA email lists. Stakeholder meetings are scheduled on a periodic basis to provide information to the public and opportunities to ask questions and make suggestions. These will be posted on the websites and announced via email.

## **8. Desired Outcomes**

### ***What are we trying to accomplish?***

We aim to make opportunities available for stakeholders to provide input during implementation of the GSP, and ensure the GSP accounts for and considers stakeholder input appropriately.

### ***How will we know if we are successful?***

We will be successful when various stakeholders have opportunities to provide their input, ask questions, receive up-to-date information, and comment on draft documents.

***What are the challenges or barriers?***

One of the challenges is making a complete list of stakeholders and being able to effectively communicate with them. We will make every effort to reach stakeholders and expand the list. The GSAs are looking to expand outreach to DACs and have identified additional groups that will be contacted about their interest in being included during GSP implementation.

***What are the opportunities for communication and engagement?***

Available communication and engagement opportunities for stakeholders and the public include public hearings, communicating through EBMUD and the City of Hayward's SGMA webpages, updates via social media platforms, periodic public stakeholder meetings, correspondence, phone calls, emails, individual meetings, updates and newsletters.

***What is the timeframe?***

GSP development took place from 2018 through 2021. GSP implementation started after the GSP was submitted to DWR on January 26, 2022 and will be ongoing.

***When will public input be relevant?***

During GSP implementation, public input will be most relevant when, new data and study results are available, refining the sustainability criteria, updating groundwater dependent ecosystems based on new data, and updating the GSP in the future (required every 5 years). The GSAs will notify stakeholders of the status and estimated schedules of when new data and studies will become available during implementation and will be available to meet with and solicit input on the results of those studies.

***How will public input be used?***

GSP Regulations (Section 355.4) require that GSA's consider the interests of the beneficial uses and users of groundwater in the basin. In addition, we will consider the effects on land use and property interests from the GSP. Public input is essential in understanding and considering these interests and effects.

During the GSP review and approval process, DWR will take into account public comments when determining whether or not interests within the basin have been considered in the development and implementation of the GSP (Section 353.8).

## **9. Communication and Engagement Venues**

Stakeholder communication and engagement will take place Subbasin-wide and for GSA area-specific stakeholders. Each GSA area may include a set of stakeholders with specific interests relevant only to a particular GSA or management area. Each GSA will decide required levels of communication for its own GSA area and engage with these stakeholders in its GSA area and management areas as appropriate. For Subbasin-wide interests and issues, EBMUD and Hayward will jointly communicate with all stakeholders.

Stakeholder communication and engagement will be conducted through multiple venues including newspaper advertisements, public hearings, individual and group meetings, interactive webpages, social media posts, telephone, and email communication. Following are the description of these venues:

### ***SGMA Web Portal and Database Management System (DMS)***

Dedicated SGMA webpages for each GSA are actively updated and accessible at [www.ebmud.com/sgma](http://www.ebmud.com/sgma) and <https://www.hayward-ca.gov/content/sustainable-groundwater-management>. The webpages are designed to provide background information, maps, documents, status updates, useful links, contact information and a means of communicating between GSAs and the public.

The East Bay Plain Subbasin DMS was developed as part of the GSP and can be accessed at <https://eastbayplainedms.com>. The DMS contains tools for visualization and analysis and is web-based and publicly accessible using common web browsers.

### ***Social Media Platforms***

EBMUD uses Twitter, Nextdoor and Facebook social media platforms to disseminate information to the public. Hayward utilizes Twitter, Facebook and electronic newsletters as

communication vehicles. Both GSAs will use existing social media platforms, as well as potential new platforms as they become available, to update followers on SGMA compliance activities as appropriate.

### ***Public Hearings***

Notices of public hearings are published in local newspapers informing the public on meeting information, subject, and how to provide comments prior to decision-making.

### ***Individual Meetings***

Upon request, GSA staff are available to meet with interested parties to discuss the SGMA compliance activities or receive input.

### ***Stakeholder Outreach Meetings***

During GSP implementation, stakeholder outreach meetings will be held periodically. Meeting invitations are sent out to individuals and entities on the stakeholder mailing list, and information is also posted on the websites and social media platforms. These meetings will cover a broad range of agenda items including GSP implementation updates, technical studies, environmental topics, and any stakeholder interests. If necessary, follow-up meetings could be scheduled to focus particular topics.

### ***Technical Advisory Committee Meetings***

The Technical Advisory Committee is a working group which will review technical work products. The meetings may be conducted through web conferencing as well as in-person meetings.

### ***Inter-basin Working Group (IWG) Meetings***

Members of IWG can participate in the stakeholder outreach meetings as well as individual meetings with GSAs as necessary. In addition, IWG meetings will be held periodically to provide updates and coordinate with members.

### ***EBMUD Board of Directors Meeting***

The EBMUD Board of Directors generally meets on the second and fourth Tuesday of the month. The Board's meeting agenda is published in advance and includes a public comment item where members of public can provide comments on EBMUD's business.

### ***City of Hayward City Council Meeting***

The City Council meets the first, third and fourth Tuesdays of each month at 7 p.m. in Council Chambers, 2nd Floor of 777 B Street, Hayward, CA 94541. The City Council meeting agenda includes a public comment period when members of the public can provide comments on matters related to the City.

## **10. Summary**

Stakeholder communication and outreach activities are essential in GSP implementation. Only through effective communication and outreach, we will be able to ensure those stakeholders' concerns, issues and aspirations are consistently understood and considered in the GSAs' decision-making process.

Moreover, the stakeholder C&E process will be ongoing, starting with GSP development and through implementation of the approved GSP for the East Bay Plain Subbasin. As with the GSP, periodic reviews and adjustments of the C&E process may be necessary. The ultimate goal is to develop and implement a robust stakeholder C&E process so we may achieve sustainability in managing our valuable local groundwater resource for future generations.

## Appendix A: Stakeholders List





## Inbasin Stakeholder Engagement Chart for GSP Development

3/15/2023

Category of Interest	Examples of Stakeholder Groups	Engagement purpose	Name		TAC Y/N	Email	Organization	Notes
General Public	<ul style="list-style-type: none"> <li>Citizens groups</li> <li>Community leader</li> <li>Consultants</li> </ul>	Inform to improve public awareness of sustainable groundwater management	Barnes	Nancy		nancy.barnes@stantec.com	Stantec	
			Benito	Pascual		pascual@hydrometricswri.com	Hydrometrics	
			Brennan	Richard		rbrennan@gmail.com	Public	
			Chung	Christy		christy_chung@berkeley.edu	Public	
			DelGadillo	Brenda	Y	bdelgadillo2@horizon.csueastbay.edu bdelgadillo@lbl.gov	Lawrence Berkeley Lab	
			Halula	Theresa		theresa_halula@yahoo.com	public	
			Gowdy	Howdy		howdy.goudey@gmail.com	public	
			Heppner	Chris		cheppner@ekiconsult.com	EKI	
			John/Farmer	Joe	Y	jo@grolutions.us	Public	
			Jordan	Preston	Y	pdjordan@lbl.gov	Lawrence Berkeley Lab	
			Lawlor	Joseph		cjhjoe@gmail.com	Public	
			Leever	Bill		bleever@brwncald.com	Brown & Caldwell	
			McKinney	Kelye		kmckinney@westyost.com	West Yost	
			Newcomer	Michelle	Y	mnewcomer@lbl.gov	Lawrence Berkeley Lab	
			Nico	Peter	Y	psnico@lbl.gov	Lawrence Berkeley Lab	
			Schueler	Margo	Y	schueler890@comcast.net	Berkeley Citizens Commission	
			Suplick	Stuart		ssuplick@gmail.com	Public	
			Swift	Linda		dismoreswift@att.net	Public	
			Tan	Melanie		melanietan@kennedyjenks.com	Kennedy Jenks	
			Tana	Cameron		ctana@elmontgomery.com	Montgomery & Associates	
			Tang	Jennifer		jennifertang@lbl.gov	Lawrence Berkeley Lab	
			Taraszki	Michael		michael.taraszki@woodplc.com	Wood	
			Williamson	Mark		mwilliamson@geiconsultants.com	GEI	
Woodburn	Erica	Y	erwoodburn@lbl.gov	Lawrence Berkeley Lab				
Yep	Ray		RayYep1@gmail.com	Public				
Land Use	<ul style="list-style-type: none"> <li>Municipalities (City, County planning depts.)</li> <li>Regional land use agencies</li> </ul>	Consult and involve to ensure land use policies are supporting GSPs	Ackerman	Hank		hank@acpwa.org	Alameda County Public Works	
			Akagi	Daniel		dakagi@cityofberkeley.info	City of Berkeley	
			Ameri	Alex		Alex.Ameri@hayward-ca.gov	City of Hayward	
			Bermudez	Yader		yader_bermudez@ci.richmond.ca.us	City of Richmond	
			Bond	Jeff		jbond@albanyca.org	City of Albany	
			Booth	Amanda		amandab@sanpabloca.gov	City of San Pablo	
			Desai	Miroo		mdesai@emeryville.org	City of Emeryville	
			Garland	Liam		lgarland@cityofberkeley.info	City of Berkeley	
			Gilchrist	William		wgilchrist@oaklandca.gov	City of Oakland	
			Gonzales	Daniel		dgonzales@piedmont.ca.gov	City of Piedmont	
			Hernandez	Ryan		ryan.hernandez@dcd.cccounty.us	Contra Costa County Water Agency	
			Hitchen	Jon		johnhitchen@outlook.com	City of Berkeley Public Works	
			Hurley	Mark		mhurley@albanyca.org	City of Albany	
			Inthavong	Lam		linthavong@cityofberkeley.info	City of Berkeley, Toxics Management Division	510-981-7466
			Jackson	Kevin		kjackson@piedmont.ca.gov	City of Piedmont	
			Jenson	Justin		jjenson@sanleandro.org	City of San Leandro	
			Kaufman	Maurice		mkaufman@emeryville.org	City of Emeryville	
			Klein	Jordan		jklein@cityofberkeley.info planning@cityofberkeley.info	City of Berkeley	
			Lemaire	Cindy		clemaire@sanleandro.org	City of San Leandro	
			Levin	Brooke		blevin@oaklandca.gov	City of Oakland	
			Marquises	Sheila		smarquises@sanleandro.org	City of San Leandro	
			Mitchell	Richard		Richard_Mitchell@ci.richmond.ca.us	City of Richmond	
			Mok	Hoi Fei		hfmok@sanleandro.org	City of San Leandro	
			Moss	Sean		smoss@ci.el-cerrito.ca.us	City of El Cerrito	
			Muktevi	Srinivas		smuktevi@cityofberkeley.info	City of Berkeley	
			Munoz	Cheryl	Y	cheryl.munoz@hayward-ca.gov	City of Hayward	
			Ortiz	Yveteh		yortiz@ci.el-cerrito.ca.us	City of El Cerrito	
			Pollart	Debbie		dpollart@sanleandro.org	City of San Leandro	
			Schultz	Avalon		aschultz@sanleandro.org	City of San Leandro	

## Inbasin Stakeholder Engagement Chart for GSP Development

3/15/2023

Category of Interest	Examples of Stakeholder Groups	Engagement purpose	Name		TAC Y/N	Email	Organization	Notes
			Skramstad	Mary Ellen		mskramstad@cityofberkeley.info	City of Berkeley	
			Smith	Erin	Y	ESmith@alamedaca.gov	City of Alameda	
			Smith	Ryan	Y	ryan_smith@ci.richmond.ca.us	City of Richmond	
			Stamps	Jamar	Y	jamar_stamps@dcd.cccounty.us	Contra Costa County Conservation and Development	
			Tai	Allen		atai@alamedaca.gov	City of Alameda	
			Tom	Caroline		caroline.tom@pw.cccounty.us	Contra Costa County Public Works	
			Tyler	Libby		libbyt@sanpabloa.gov	City of San Pablo	
			Varnagen	Liz		greenhagen@mac.com	City of Berkeley	
Private Users	<ul style="list-style-type: none"> <li>Private Pumpers</li> <li>Domestic Users</li> <li>Schools &amp; College</li> <li>Hospitals</li> </ul>	Inform and involve to avoid negative impact to these users	Yoo	James	Y	jamesy@acpwa.org	Alameda County Public Works	
			Blevins	Walter		wblevins@clpccd.org	Chabot College	
			Boyd	Monty		boym@haywardrec.org	Hayward Area Park and Recreation District	
			DeLoa	Seve		seved@cfcsoakland.org	St. Joseph's Cemetery	
			Freightman	Ralph		rfreightman@myrichmondcc.org	Richmond Country Club	
			Giammona	Daniel		Giad@haywardrec.org	Hayward Area Park and Recreation District	
			Ingram	Gary		gingram@playmetro.com	Metropolitan Golf Course	
			Lopez_Narvaez	Ilse		ilopeznarvaez@ucdavis.edu	UC Davis	
			Moe	Henry		maintenance@salesian.com	Salesian Highschool	
			Mueller	Bryan		bryan.mueller@carriageservices.com	Rolling Hills Memorial Park	
			Peterson	Chris		petc@haywardrec.org	Hayward Area Park and Recreation District	
			Rivera	Randy		randy.rivera@chapelofthechimes.com	Chapel of the Chimes	
			Robason	Mike		mrobason@playmetro.com	Metropolitan Golf Course	
			Souza	Mike		msouza@myrichmondcc.org	Richmond Country Club	
			Winkenbach	Mike		mike@coricapark.com	Chuck Corica Golf Course	
			Zildic	Ines		izildic@4cd.edu	Contra Costa Community College District	
			Urban/ Agriculture users	<ul style="list-style-type: none"> <li>Water agencies</li> <li>Irrigation districts</li> <li>Municipal water companies</li> <li>Resource conservation districts</li> <li>Farmers/Farm Bureaus</li> </ul>	Collaborate to ensure sustainable management of groundwater	Covarrubias	Fernando	
Chen	Eileen					eileen.chen@acwd.com	Alameda County Water District	
Cruz	Joaquin					joaquin.cruz@ebmud.com	EBMUD	
Dang	Jimmy					jdang@oroloma.org	OroLoma Sanitary District	
de la Piedra	Vanessa					vdelapiedra@valleywater.org	Santa Clara Valley Water District	
Hidas	Laura					laura.hidas@acwd.com	Alameda County Water District	
Hu	Linda	Y				linda.hu@ebmud.com	EBMUD	
Ice	Charles					cice@smcgov.org	County of San Mateo	
Jimenez	Marcie					marcie.jimenez@ebmud.com	EBMUD	
Mahoney	Carol					cmahoney@zone7water.com	Zone 7 Water Agency	
Myers	Michelle					Michelle.Myers@acwd.com	Alameda County Water District	
Su	Grace	Y				Grace.su@ebmud.com	EBMUD	
Tognolini	Mike					michael.tognolini@ebmud.com	EBMUD	
Underwood	Amy					amy@ebmud.com	EBMUD	
Industrial Users	Commercial and industrial self-supplier Local trade association or group	Inform and involve to avoid negative impact to these users	Dunne	Maureen		maureen.dunn@chevron.com	Chevron	
			Kristy	McKenney		kmckenney@portoakland.com	Port of Oakland	
			Nguyen	Liem		lguyen@portofoakland.com	Port of Oakland	
			Novack	Jan		jnovak@portoakland.com	Port of Oakland	
			Sinkoff	Richard		rsinkoff@portoakland.com	Port of Oakland	
Environmental and Ecosystem	<ul style="list-style-type: none"> <li>Federal and State agencies</li> <li>Wetland managers</li> <li>Environmental groups</li> </ul>	Inform and involve to sustain a vital ecosystem	Albert	Heinrich		heinrich.albert@outlook.com	Sierra Club	
			Cheng	Nicole		nicole@climateplan.org	Climate Plan	
			Clary	Jennifer		jclary@cleanwater.org	Clean Water Action	
			Diermayer	Sonia		sodier@mindspring.com	Sierra Club	
			Hughes	Marikka		marikka.hughes@dtsc.ca.gov	CA Dept of Toxic Substance Control	
			Karpowicz	Alyx	Y	alyx.karpowicz@waterboards.ca.gov	SF Regional Water Quality Board	
			King	Buck		buck.king@dtsc.ca.gov	CA Dept of Toxic Substance Control	
			Maxfield	Jessica		jessica.maxfield@wildlife.ca.gov	California Dept. of Fish & Wildlife	
			McInerney	Maya		maya.mcinerney@waterboards.ca.gov	SF Regional Water Quality Board	
			Rohde	Melissa		tncgroundwater@gmail.com	The Nature Conservancy	
			Schwartz	Susan		fscreeks@gmail.com	Friends of Five Creeks	510 848 9358
			Seapy	Brianna		groundwater@wildlife.ca.gov	California Dept. of Fish & Wildlife	
			Whitley	Bob		bwhitley@westyost.com	East Bay Leadership Council Water Task Force	

## Inbasin Stakeholder Engagement Chart for GSP Development

3/15/2023

Category of Interest	Examples of Stakeholder Groups	Engagement purpose	Name		TAC Y/N	Email	Organization	Notes
Economic Development	<ul style="list-style-type: none"> <li>Chambers of commerce</li> <li>Business groups/associations</li> <li>Elected officials (Board of Supv., City Council)</li> <li>State Assembly members</li> <li>State Senators</li> </ul>	Inform and involve to support a stable economy	Arreguin	Jesse		mayor@cityofberkeley.info	City of Berkeley	
			Butt	Tom		tom.butt@intres.com	City of Richmond	
			Carson	Keith		keith.carson@acgov.org	Board of Supervisors Alameda County	
			Donahue	Scott		sdonahue@emeryville.org	City of Emeryville	
			Gioia	John		supervisor_gioia@bos.cccounty.us	Board of Supervisors Contra Costa County	
						john_gioia@bos.cccounty.us		
			Haggerty	Scott		scott.haggerty@acgov.org	Board of Supervisors Alameda County	
			Herrera Spencer	Trish		tspencer@alamedaca.gov	City of Alameda	
			Jimenez	Claudia		Claudia_Jimenez@ci.richmond.ca.us	City of Richmond	
			King	Teddy		tking@piedmont.ca.gov	City of Piedmont	
			Martinez	Eduardo	Y	eduardo_martinez@ci.richmond.ca.us	Mayor of the City of Richmond	
			McQuaid	Peggy		pmcquaid@albanyca.org	City of Albany	
			Morehouse	Hayes		hmorehouse@sanleandro.org	City of San Leandro	
			Motoyama	Lisa		lmotoyama@ci.el-cerrito.ca.us	City of El Cerrito	
			Roe	Dilan		dilan.roe@acgov.org	Board of Supervisors Alameda County	
			Russo Cutter	Pauline		pcutter@sanleandro.org	City of San Leandro	
Tam	Lena		BOSDistrict3@acgov.org	Board of Supervisors Alameda County				
Thao	Sheng		officeofthemayor@oaklandca.gov	City of Oakland				
Valle	Richard		richard.valle@acgov.org	Board of Supervisors Alameda County				
Carolyn	Wysinger		cwysinger@ci.el-cerrito.ca.us	City of El Cerrito				
Human right to water	<ul style="list-style-type: none"> <li>Disadvantaged Communities</li> <li>Small community systems</li> <li>Environmental Justice Groups</li> </ul>	Inform and involve to provide a safe and secure groundwater supplies to DACs	Ghoghaie	Nahal		nahal@ejcw.org	Environmental Justice Coalition for Water	
Tribes	<ul style="list-style-type: none"> <li>Tribal Government</li> </ul>	Inform, involve and consult with tribal government (See Engagement with Tribal Governments Guidance Document)	-	-		info@homelandforlytton.com	Lytton Band of Pomo Indians	No groundwater used
Federal lands	<ul style="list-style-type: none"> <li>Military bases/Department of Defense</li> <li>Forest service</li> <li>National Park Services</li> </ul>	Inform, involve and collaborate to ensure basin sustainability	Alameda Naval Air Station			info@alamedanavalairmuseum.org	Alameda Naval Air Station	
Integrated Water Management	<ul style="list-style-type: none"> <li>Regional water management groups (IRWM regions)</li> <li>Flood agencies</li> <li>Recycled water coalition</li> </ul>	Inform, involve and collaborate to improve regional sustainability	Monetta	John		jmonetta@oaklandca.gov	Oakland Army Base	
			Brewster	Bill		bbrew@water.ca.gov	CA Department of Water Resources	
			Francis	Tom		tfrancis@bawsca.org	Bay Area Water Supply & Conservation Agency	
			Janes	Katy		margaret.janes@water.ca.gov	CA Department of Water Resources	
			Lin	Hong		hong.lin@water.ca.gov	CA Department of Water Resources	
			Sneed	Michelle		micsneed@usgs.gov	USGS	
Wells	Paul		paul.wells@water.ca.gov	CA Department of Water Resources				