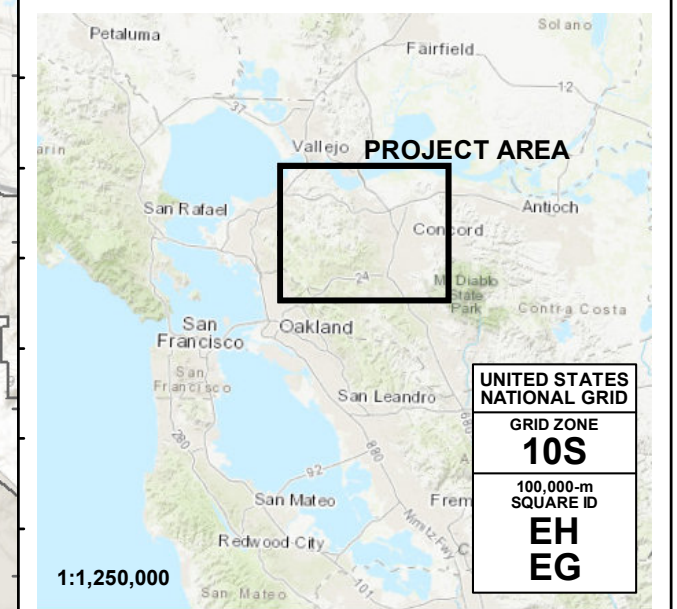




INUNDATION MAP FOR HYPOTHETICAL FAILURE OF
LAFAYETTE DAM
CONTRA COSTA COUNTY, CA

SCENARIO: SUNNY DAY	PREP. DATE: NOV 2019	SHEET NO.: INDEX	DWR DAM NO.: 31.002	NATIONAL DAM ID NO.: CA00163
------------------------	-------------------------	---------------------	------------------------	---------------------------------



INDEX GRID	MAXIMUM VELOCITY (FT/SEC)
1	37
2	27
3	21
4	16
5	15
6	19
7	8
8	8
9	8
10	5

LEGEND

ARRIVAL TIME (HOURS)	MAXIMUM DEPTH (FEET)
STREAM CENTERLINE	1 - 3
DAM	3 - 5
CANAL	5 - 7
RESERVOIRS	7 - 10
CITY BOUNDARY	10 - 15
MAP BOOK GRID	15 - 20
	20 - 30
	>30 ft depth symbol"/> > 30

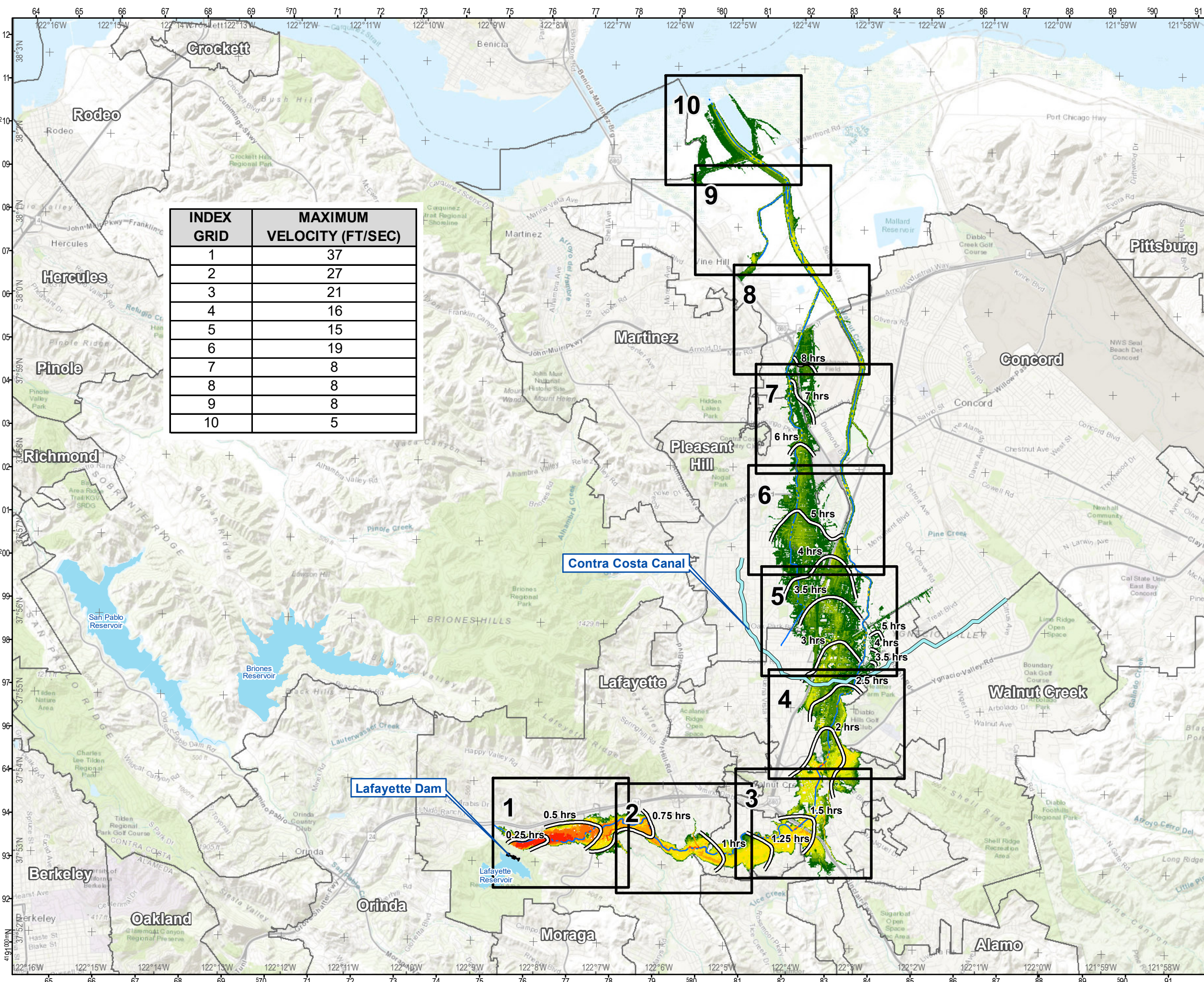
- NOTES:**
- The information shown on the inundation map is approximate and should only be used as a guideline for emergency response and preparation purposes. It does not represent the integrity or safety of Lafayette Dam.
 - The dam breach analysis was performed using the program HEC-RAS, Version 5.0.5. Elevations in the study reference NAVD88.
 - Maximum velocity depends on factors such as ground slope and roughness, and therefore varies.
 - Security-sensitive infrastructure may not be shown on this map.

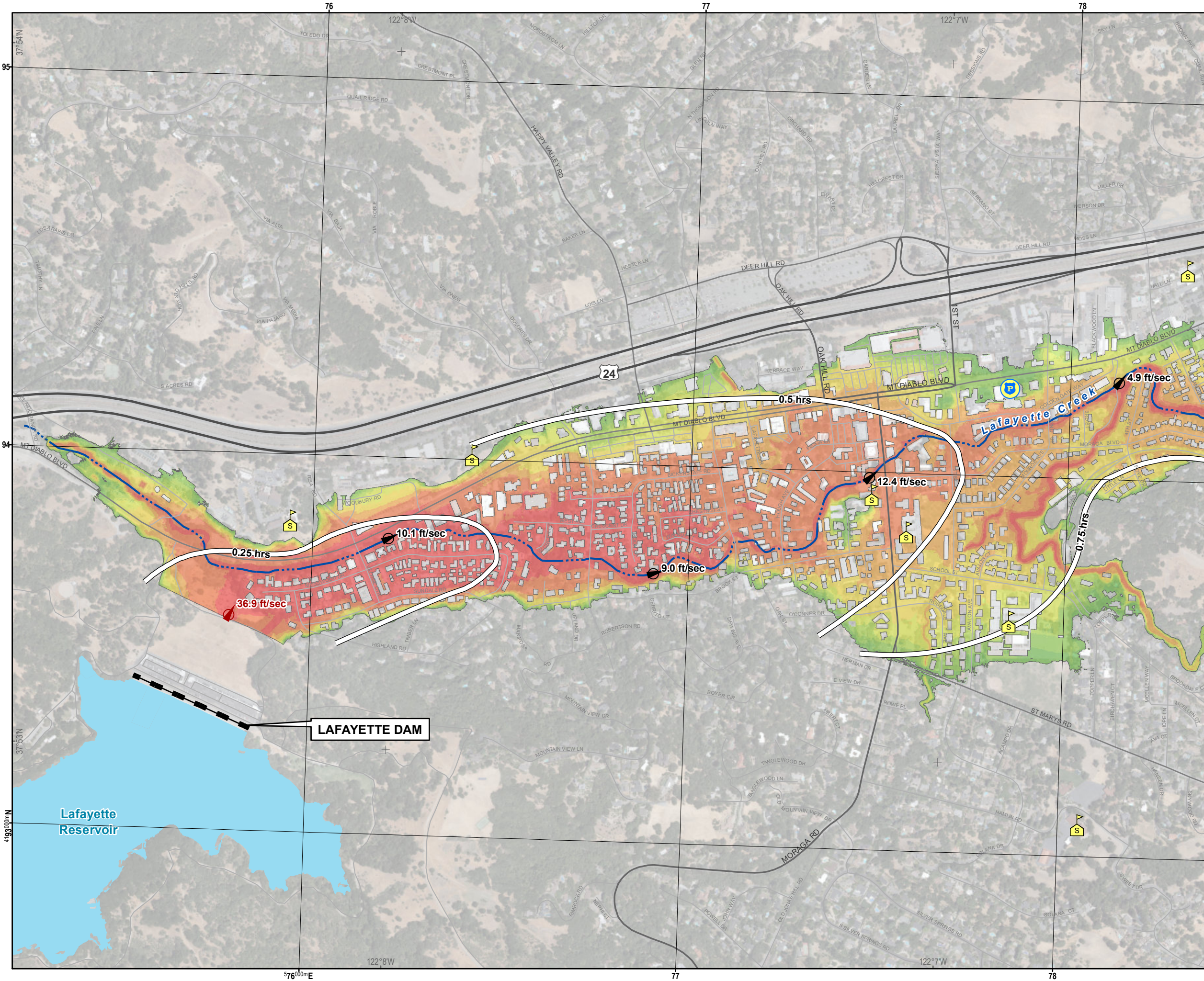
MAP PROJECTION:
California Teale Albers (feet), NAD83

SCALE IN FEET (1 INCH=7,000 FEET)

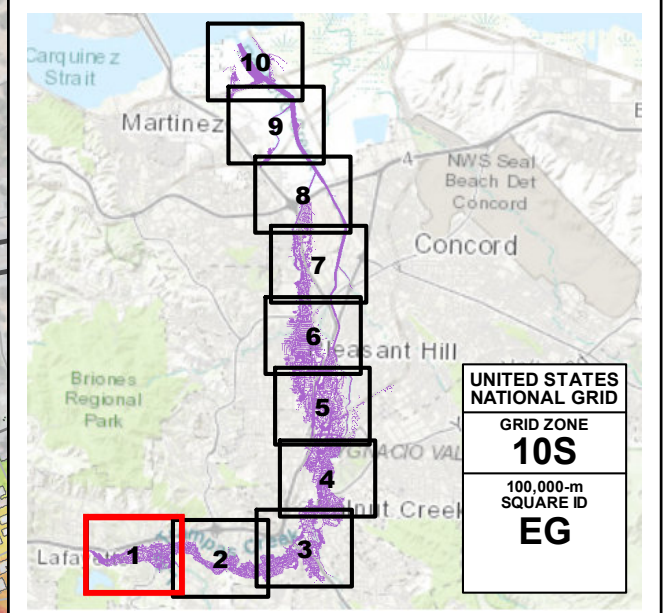
0 4,000 8,000 12,000

REFERENCE:
GRID OVERLAY, United States National Grid (meters), NAD83
GRATICULE, Geographic Coordinate System, NAD83 (DDM)





INUNDATION MAP FOR HYPOTHETICAL FAILURE OF LAFAYETTE DAM CONTRA COSTA COUNTY, CA				
SCENARIO: SUNNY DAY	PREP. DATE: NOV 2019	SHEET NO.: 1 OF 10	DWR DAM NO.: 31.002	NATIONAL DAM ID NO.: CA00163



FLOOD WAVE MAXIMUM DEPTH (feet)

1 - 3
3 - 5
5 - 7
7 - 10
10 - 15
15 - 20
20 - 30
> 30

ARRIVAL TIME (HOURS)

MAXIMUM VELOCITY AND DIRECTION AT SELECTED LOCATION

MAXIMUM VELOCITY AND DIRECTION ON SHEET

CITY LIMITS

- POLICE STATIONS
- SCHOOLS
- DAM
- STREAM CENTERLINE
- RESERVOIRS

NOTES:

- The information shown on the inundation map is approximate and should only be used as a guideline for emergency response and preparation purposes. It does not represent the integrity or safety of Lafayette Dam.
- The dam breach analysis was performed using the program HEC-RAS, Version 5.0.5. Elevations in the study reference NAVD88.
- Maximum velocity depends on factors such as ground slope and roughness, and therefore varies.
- Security-sensitive infrastructure may not be shown on this map.

MAP PROJECTION:
California Teale Albers (feet), NAD83

SCALE IN FEET (1 INCH=800 FEET)

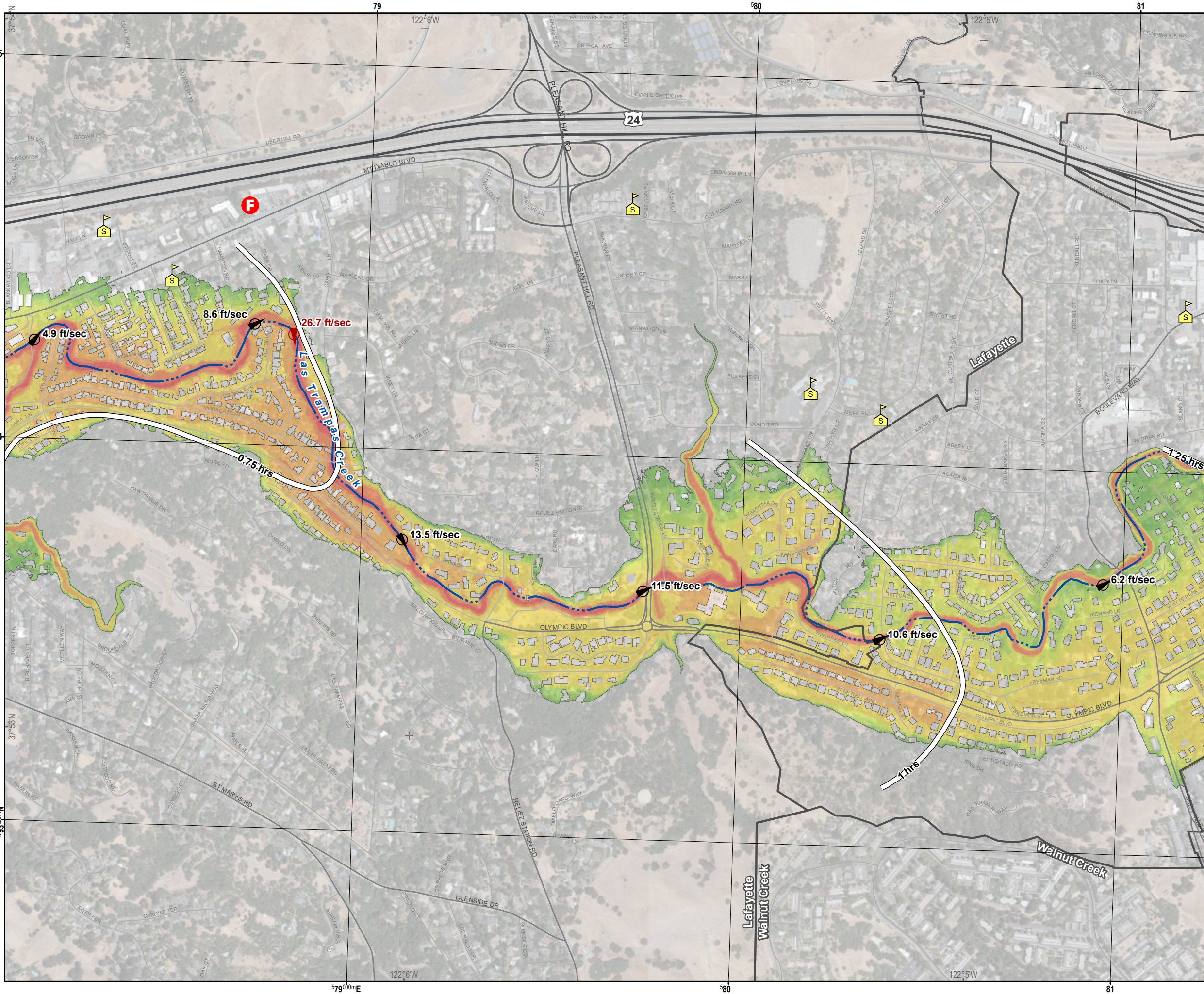
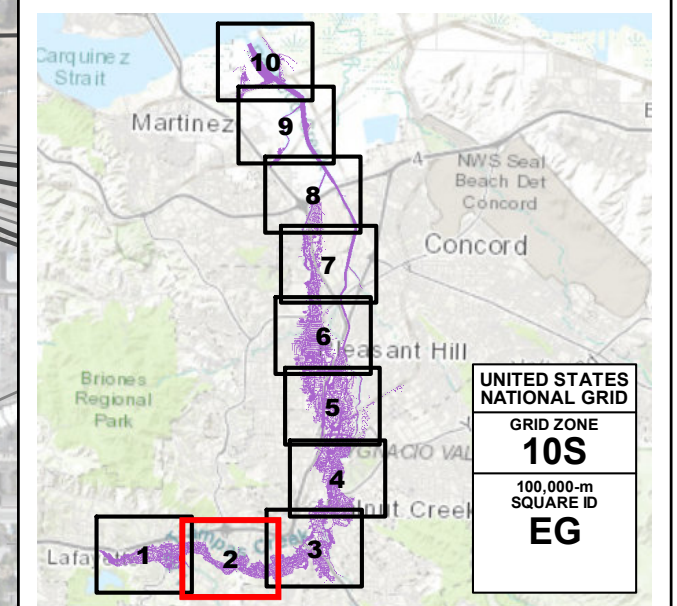
REFERENCE:
GRID OVERLAY, United States National Grid (meters), NAD83
GRATICULE, Geographic Coordinate System, NAD83 (DDM)

REGISTERED PROFESSIONAL ENGINEER
 SEAN M. TODARO
Sean Todaro
 No. C64457
 CIVIL
 STATE OF CALIFORNIA



INUNDATION MAP FOR HYPOTHETICAL FAILURE OF
LAFAYETTE DAM
 CONTRA COSTA COUNTY, CA

SCENARIO: SUNNY DAY	PREP. DATE: NOV 2019	SHEET NO.: 2 OF 10	DWR DAM NO.: 31.002	NATIONAL DAM ID NO.: CA00163
-------------------------------	--------------------------------	------------------------------	-------------------------------	--



FLOOD WAVE MAXIMUM DEPTH (feet)

1 - 3
3 - 5
5 - 7
7 - 10
10 - 15
15 - 20
20 - 30
> 30

LEGEND:

- F** FIRE STATIONS
- S** SCHOOLS
- STREAM CENTERLINE
- ARRIVAL TIME (HOURS)
- MAXIMUM VELOCITY AND DIRECTION AT SELECTED LOCATION
- MAXIMUM VELOCITY AND DIRECTION ON SHEET
- CITY LIMITS

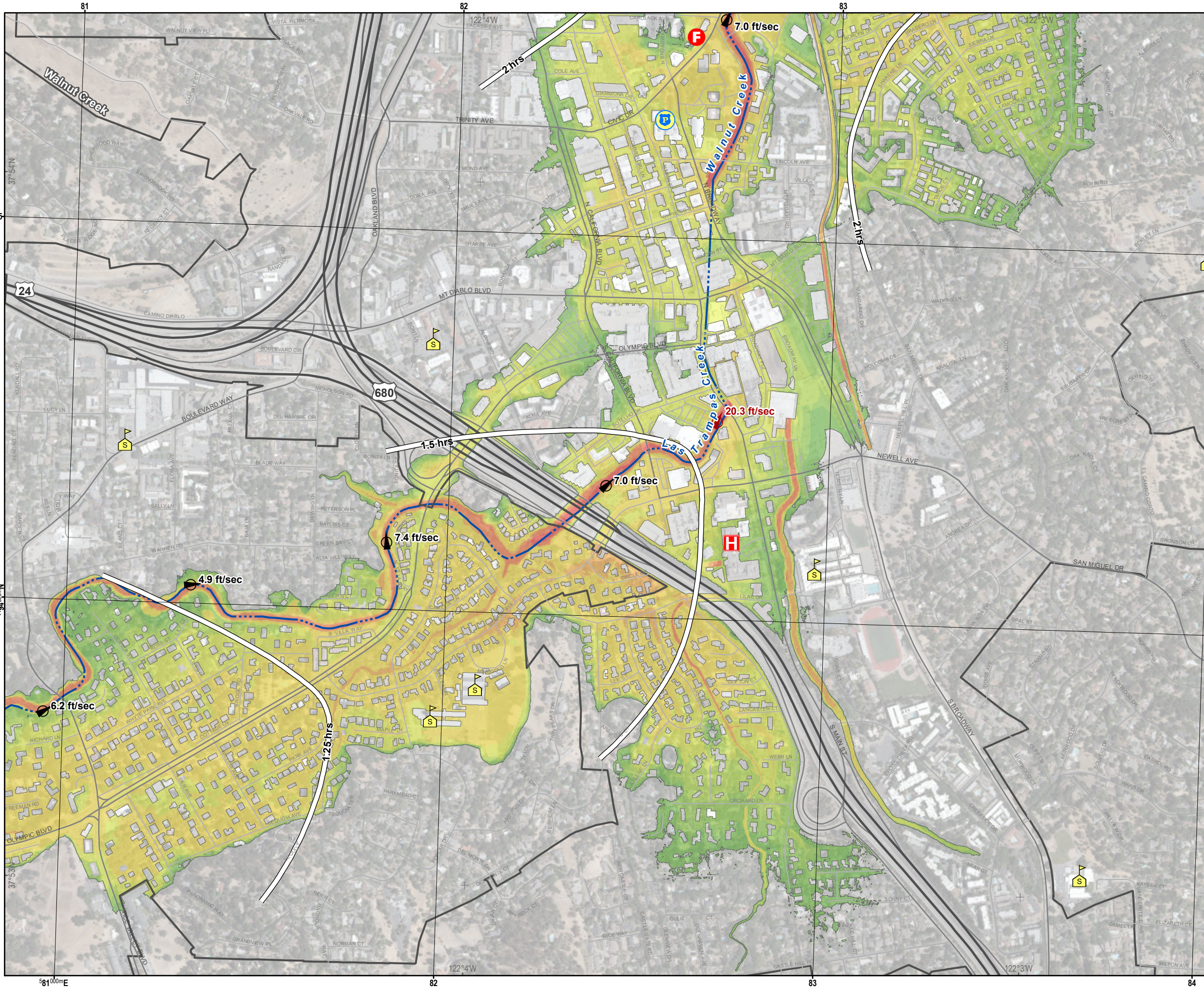
NOTES:

- The information shown on the inundation map is approximate and should only be used as a guideline for emergency response and preparation purposes. It does not represent the integrity or safety of Lafayette Dam.
- The dam breach analysis was performed using the program HEC-RAS, Version 5.0.5. Elevations in the study reference NAVD88.
- Maximum velocity depends on factors such as ground slope and roughness, and therefore varies.
- Security-sensitive infrastructure may not be shown on this map.

MAP PROJECTION:
 California Teale Albers (feet), NAD83

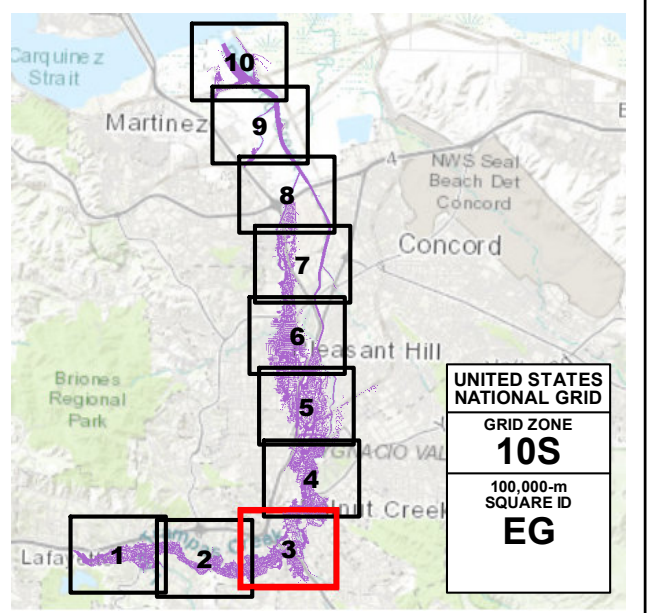
SCALE IN FEET (1 INCH=800 FEET)
 0 400 800 1,200

REFERENCE:
 GRID OVERLAY, United States National Grid (meters), NAD83
 GRATICULE, Geographic Coordinate System, NAD83 (DDM)



EBMUD INUNDATION MAP FOR HYPOTHETICAL FAILURE OF
LAFAYETTE DAM
 CONTRA COSTA COUNTY, CA

SCENARIO: SUNNY DAY	PREP. DATE: NOV 2019	SHEET NO.: 3 OF 10	DWR DAM NO.: 31.002	NATIONAL DAM ID NO.: CA00163
-------------------------------	--------------------------------	------------------------------	-------------------------------	--



FLOOD WAVE MAXIMUM DEPTH (feet)

- 1 - 3
- 3 - 5
- 5 - 7
- 7 - 10
- 10 - 15
- 15 - 20
- 20 - 30
- > 30

LEGEND:

- F** FIRE STATIONS
- P** POLICE STATIONS
- S** SCHOOLS
- H** HOSPITALS
- STREAM CENTERLINE
- ARRIVAL TIME (HOURS)
- MAXIMUM VELOCITY AND DIRECTION AT SELECTED LOCATION
- MAXIMUM VELOCITY AND DIRECTION ON SHEET
- CITY LIMITS

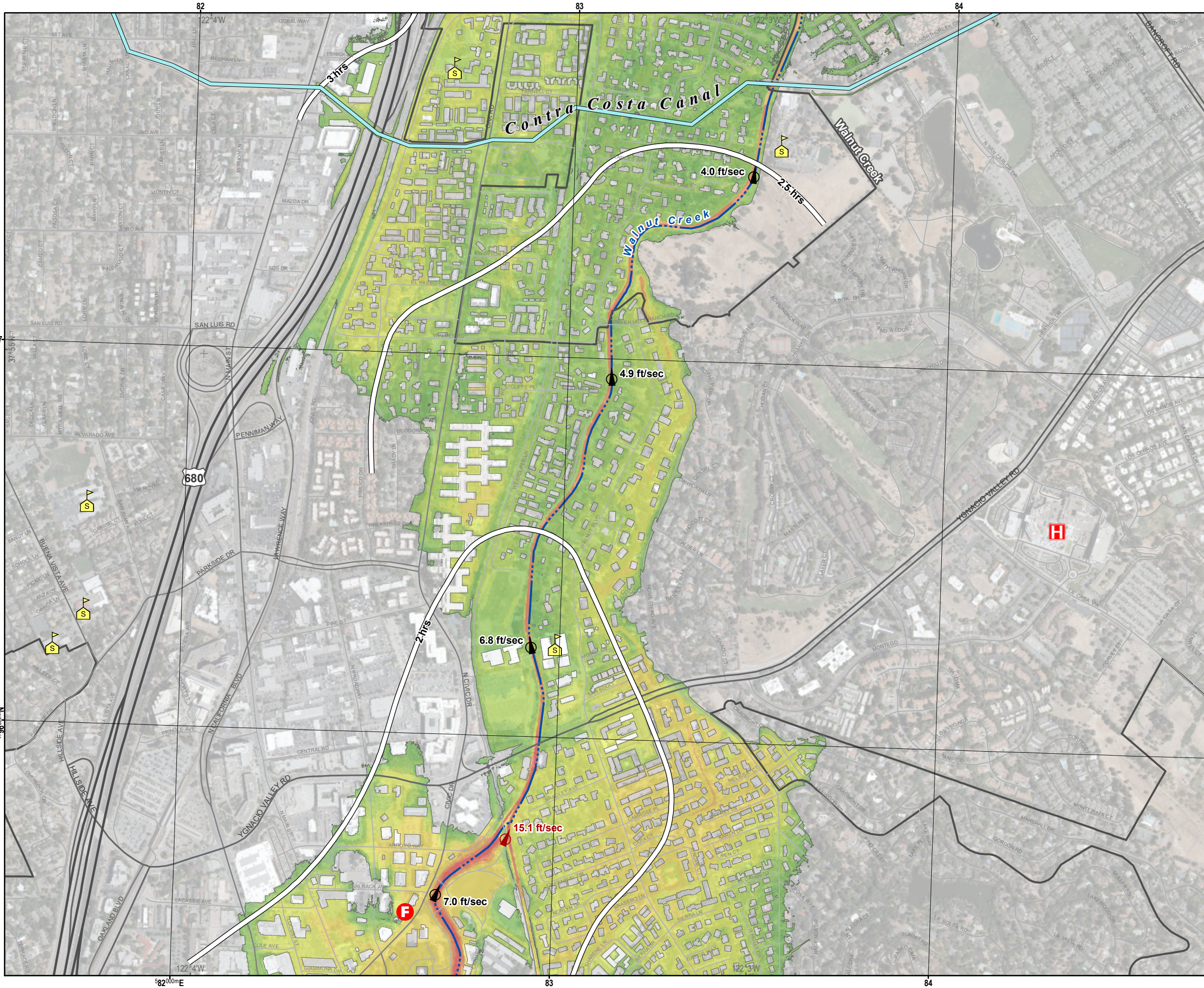
NOTES:

- The information shown on the inundation map is approximate and should only be used as a guideline for emergency response and preparation purposes. It does not represent the integrity or safety of Lafayette Dam.
- The dam breach analysis was performed using the program HEC-RAS, Version 5.0.5. Elevations in the study reference NAVD88.
- Maximum velocity depends on factors such as ground slope and roughness, and therefore varies.
- Security-sensitive infrastructure may not be shown on this map.

MAP PROJECTION:
California Teale Albers (feet), NAD83

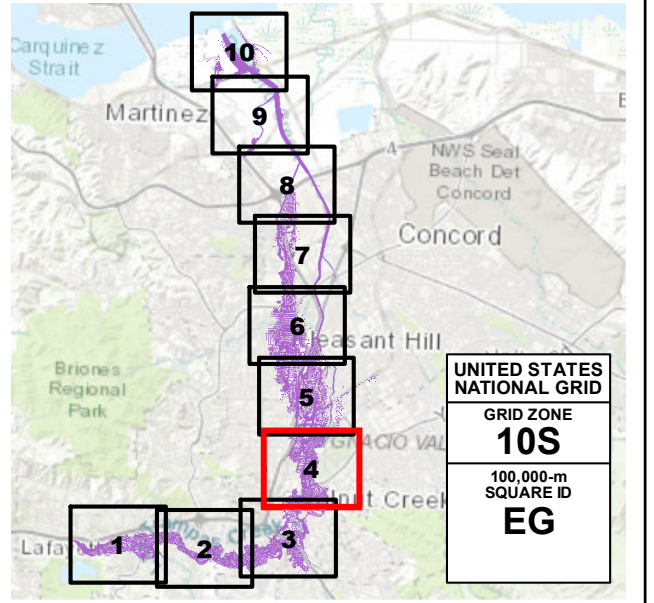
SCALE IN FEET (1 INCH=800 FEET)

REFERENCE:
GRID OVERLAY, United States National Grid (meters), NAD83
GRATICULE, Geographic Coordinate System, NAD83 (DDM)



EBMUD INUNDATION MAP FOR HYPOTHETICAL FAILURE OF
LAFAYETTE DAM
 CONTRA COSTA COUNTY, CA

SCENARIO: SUNNY DAY	PREP. DATE: NOV 2019	SHEET NO.: 4 OF 10	DWR DAM NO.: 31.002	NATIONAL DAM ID NO.: CA00163
-------------------------------	--------------------------------	------------------------------	-------------------------------	--



FLOOD WAVE MAXIMUM DEPTH (feet)

- 1 - 3
- 3 - 5
- 5 - 7
- 7 - 10
- 10 - 15
- 15 - 20
- 20 - 30
- > 30

MAXIMUM VELOCITY AND DIRECTION AT SELECTED LOCATION

MAXIMUM VELOCITY AND DIRECTION ON SHEET

LEGEND:

- F** FIRE STATIONS
- S** SCHOOLS
- H** HOSPITALS
- CANAL
- STREAM CENTERLINE
- ARRIVAL TIME (HOURS)
- CITY LIMITS

NOTES:

- The information shown on the inundation map is approximate and should only be used as a guideline for emergency response and preparation purposes. It does not represent the integrity or safety of Lafayette Dam.
- The dam breach analysis was performed using the program HEC-RAS, Version 5.0.5. Elevations in the study reference NAVD88.
- Maximum velocity depends on factors such as ground slope and roughness, and therefore varies.
- Security-sensitive infrastructure may not be shown on this map.

MAP PROJECTION:
California Teale Albers (feet), NAD83

SCALE IN FEET (1 INCH=800 FEET)

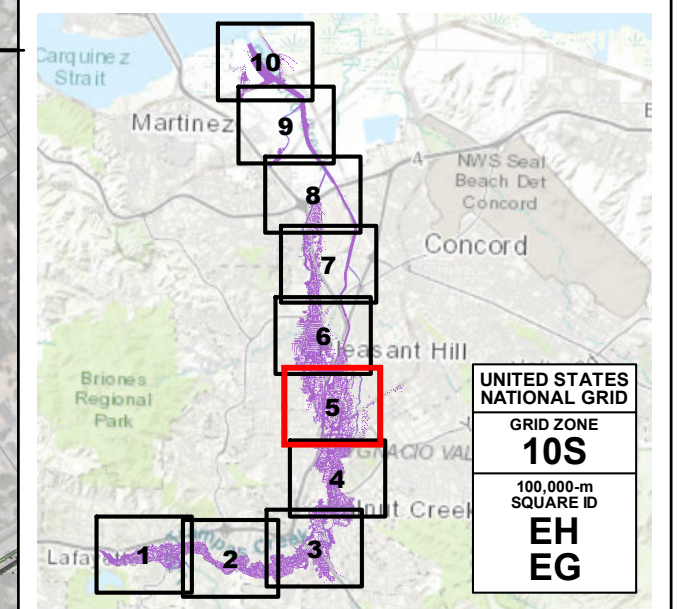
0 400 800 1,200

REFERENCE:
GRID OVERLAY, United States National Grid (meters), NAD83
GRATICULE, Geographic Coordinate System, NAD83 (DDM)



INUNDATION MAP FOR HYPOTHETICAL FAILURE OF
LAFAYETTE DAM
 CONTRA COSTA COUNTY, CA

SCENARIO: SUNNY DAY	PREP. DATE: NOV 2019	SHEET NO.: 5 OF 10	DWR DAM NO.: 31.002	NATIONAL DAM ID NO.: CA00163
------------------------	-------------------------	-----------------------	------------------------	---------------------------------



FLOOD WAVE MAXIMUM DEPTH (feet)

- 1 - 3
- 3 - 5
- 5 - 7
- 7 - 10
- 10 - 15
- 15 - 20
- 20 - 30
- > 30

LEGEND:

- F** FIRE STATIONS
- S** SCHOOLS
- CANAL
- STREAM CENTERLINE
- ARRIVAL TIME (HOURS)
- MAXIMUM VELOCITY AND DIRECTION AT SELECTED LOCATION
- MAXIMUM VELOCITY AND DIRECTION ON SHEET
- CITY LIMITS

NOTES:

- The information shown on the inundation map is approximate and should only be used as a guideline for emergency response and preparation purposes. It does not represent the integrity or safety of Lafayette Dam.
- The dam breach analysis was performed using the program HEC-RAS, Version 5.0.5. Elevations in the study reference NAVD88.
- Maximum velocity depends on factors such as ground slope and roughness, and therefore varies.
- Security-sensitive infrastructure may not be shown on this map.

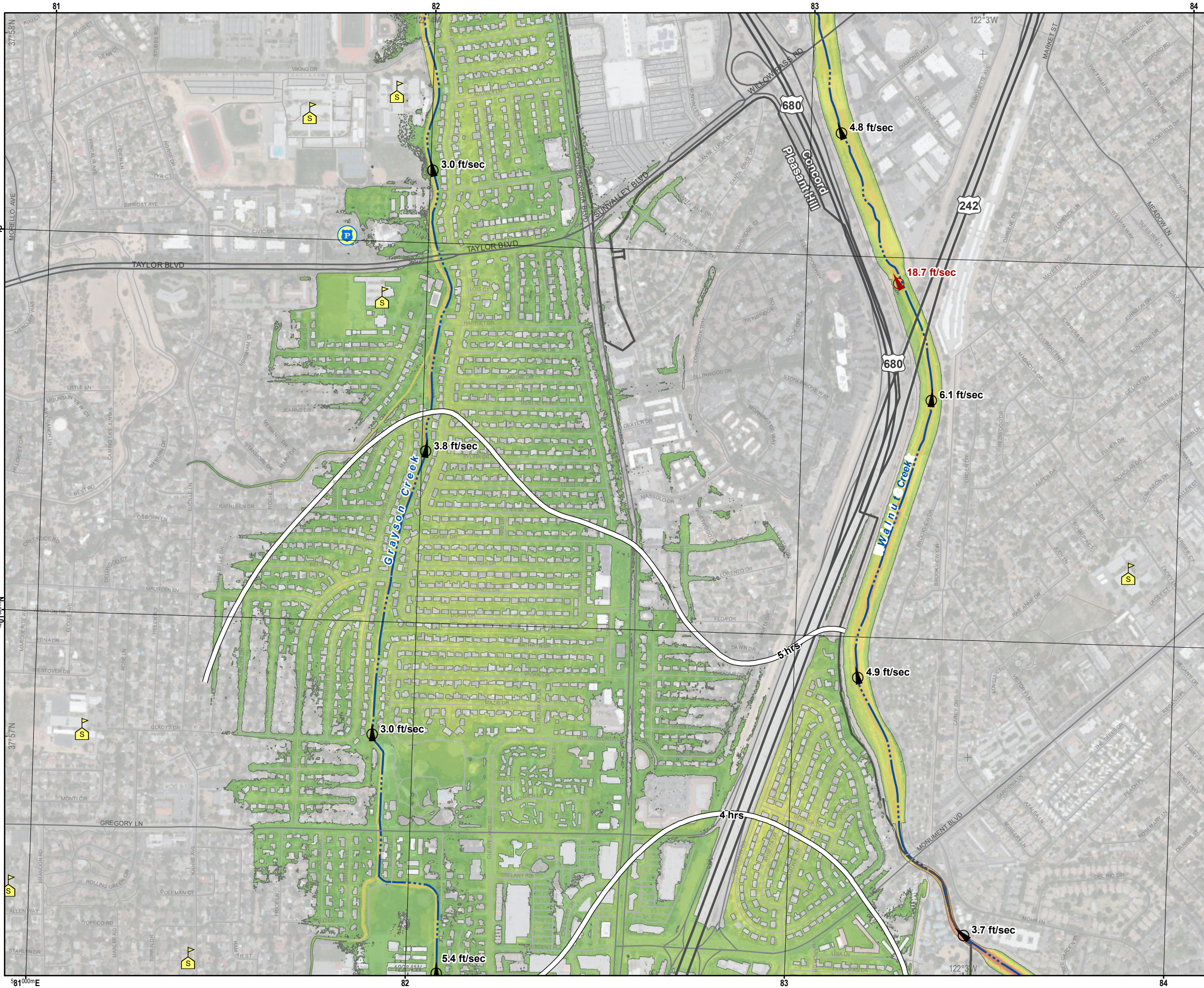
MAP PROJECTION:
 California Teale Albers (feet), NAD83

SCALE IN FEET (1 INCH=800 FEET)

0 400 800 1,200

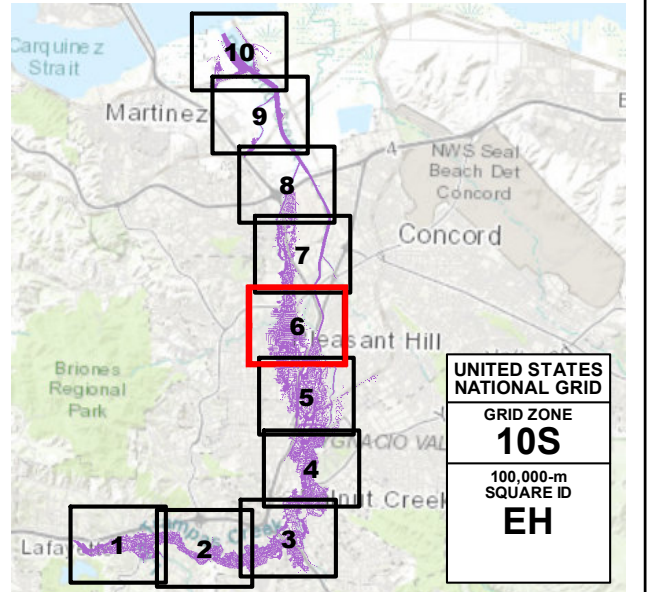
REGISTERED PROFESSIONAL ENGINEER
 SEAN M. TODARO
 No. C64457
 CIVIL
 STATE OF CALIFORNIA

REFERENCE:
 GRID OVERLAY, United States National Grid (meters), NAD83
 GRATICULE, Geographic Coordinate System, NAD83 (DDM)



INUNDATION MAP FOR HYPOTHETICAL FAILURE OF LAFAYETTE DAM
 CONTRA COSTA COUNTY, CA

SCENARIO: SUNNY DAY	PREP. DATE: NOV 2019	SHEET NO.: 6 OF 10	DWR DAM NO.: 31.002	NATIONAL DAM ID NO.: CA00163
-------------------------------	--------------------------------	------------------------------	-------------------------------	--



FLOOD WAVE MAXIMUM DEPTH (feet)

- 1 - 3
- 3 - 5
- 5 - 7
- 7 - 10
- 10 - 15
- 15 - 20
- 20 - 30
- > 30

LEGEND:

- POLICE STATIONS
- SCHOOLS
- STREAM CENTERLINE
- ARRIVAL TIME (HOURS)
- MAXIMUM VELOCITY AND DIRECTION AT SELECTED LOCATION
- MAXIMUM VELOCITY AND DIRECTION ON SHEET
- CITY LIMITS

NOTES:

- The information shown on the inundation map is approximate and should only be used as a guideline for emergency response and preparation purposes. It does not represent the integrity or safety of Lafayette Dam.
- The dam breach analysis was performed using the program HEC-RAS, Version 5.0.5. Elevations in the study reference NAVD88.
- Maximum velocity depends on factors such as ground slope and roughness, and therefore varies.
- Security-sensitive infrastructure may not be shown on this map.

MAP PROJECTION:
California Teale Albers (feet), NAD83

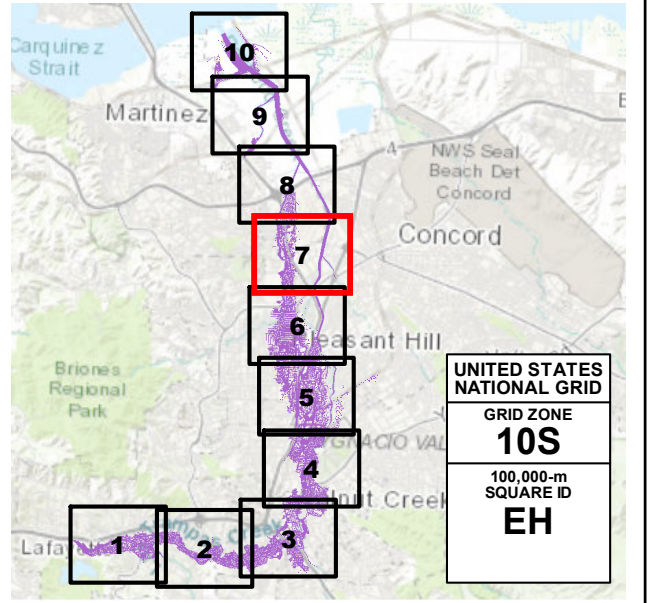
SCALE IN FEET (1 INCH=800 FEET)

REFERENCE:
GRID OVERLAY, United States National Grid (meters), NAD83
GRATICULE, Geographic Coordinate System, NAD83 (DDM)



EBMUD INUNDATION MAP FOR HYPOTHETICAL FAILURE OF
LAFAYETTE DAM
 CONTRA COSTA COUNTY, CA

SCENARIO: SUNNY DAY	PREP. DATE: NOV 2019	SHEET NO.: 7 OF 10	DWR DAM NO.: 31.002	NATIONAL DAM ID NO.: CA00163
-------------------------------	--------------------------------	------------------------------	-------------------------------	--



FLOOD WAVE MAXIMUM DEPTH (feet)

- 1 - 3
- 3 - 5
- 5 - 7
- 7 - 10
- 10 - 15
- 15 - 20
- 20 - 30
- > 30

LEGEND:

- F** FIRE STATIONS
- S** SCHOOLS
- STREAM CENTERLINE
- ARRIVAL TIME (HOURS)
- MAXIMUM VELOCITY AND DIRECTION AT SELECTED LOCATION
- MAXIMUM VELOCITY AND DIRECTION ON SHEET
- CITY LIMITS

NOTES:

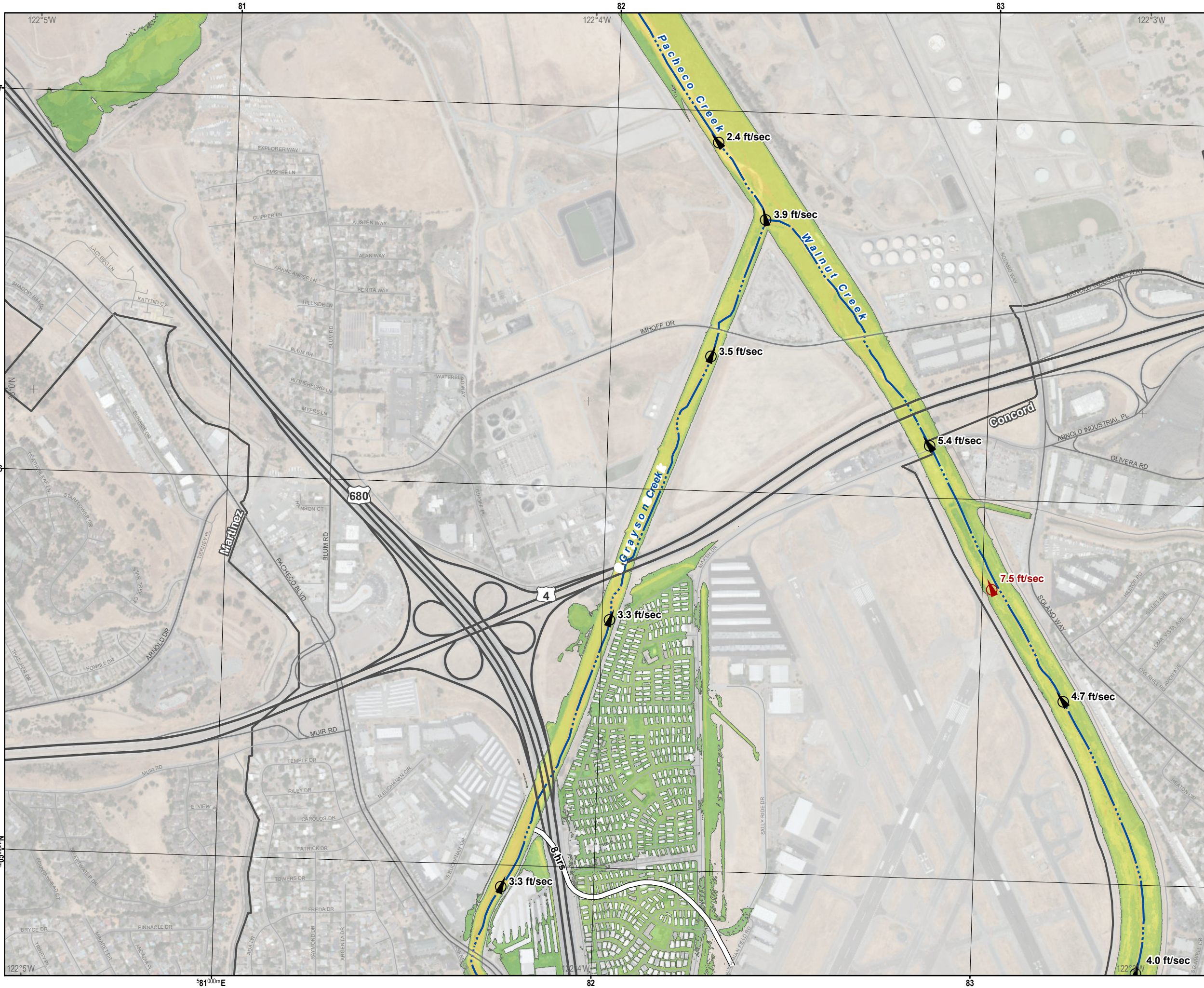
- The information shown on the inundation map is approximate and should only be used as a guideline for emergency response and preparation purposes. It does not represent the integrity or safety of Lafayette Dam.
- The dam breach analysis was performed using the program HEC-RAS, Version 5.0.5. Elevations in the study reference NAVD88.
- Maximum velocity depends on factors such as ground slope and roughness, and therefore varies.
- Security-sensitive infrastructure may not be shown on this map.

MAP PROJECTION:
California Teale Albers (feet), NAD83

SCALE IN FEET (1 INCH=800 FEET)

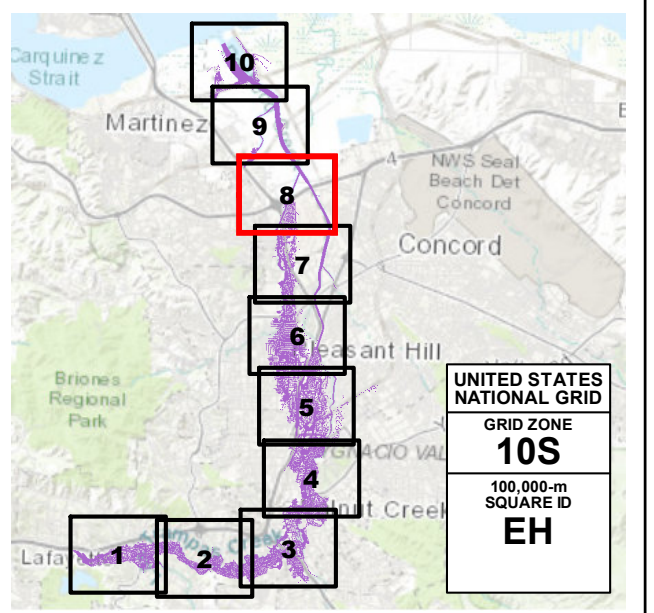
0 400 800 1,200

REFERENCE:
GRID OVERLAY, United States National Grid (meters), NAD83
GRATICULE, Geographic Coordinate System, NAD83 (DDM)



EBMUD INUNDATION MAP FOR HYPOTHETICAL FAILURE OF
LAFAYETTE DAM
 CONTRA COSTA COUNTY, CA

SCENARIO: SUNNY DAY	PREP. DATE: NOV 2019	SHEET NO.: 8 OF 10	DWR DAM NO.: 31.002	NATIONAL DAM ID NO.: CA00163
-------------------------------	--------------------------------	------------------------------	-------------------------------	--



UNITED STATES NATIONAL GRID
 GRID ZONE
10S
 100,000-m SQUARE ID
EH

FLOOD WAVE

MAXIMUM DEPTH (feet)

- 1 - 3
- 3 - 5
- 5 - 7
- 7 - 10
- 10 - 15
- 15 - 20
- 20 - 30
- > 30

ARRIVAL TIME (HOURS)

MAXIMUM VELOCITY AND DIRECTION AT SELECTED LOCATION

MAXIMUM VELOCITY AND DIRECTION ON SHEET

CITY LIMITS

NOTES:

- The information shown on the inundation map is approximate and should only be used as a guideline for emergency response and preparation purposes. It does not represent the integrity or safety of Lafayette Dam.
- The dam breach analysis was performed using the program HEC-RAS, Version 5.0.5. Elevations in the study reference NAVD88.
- Maximum velocity depends on factors such as ground slope and roughness, and therefore varies.
- Security-sensitive infrastructure may not be shown on this map.

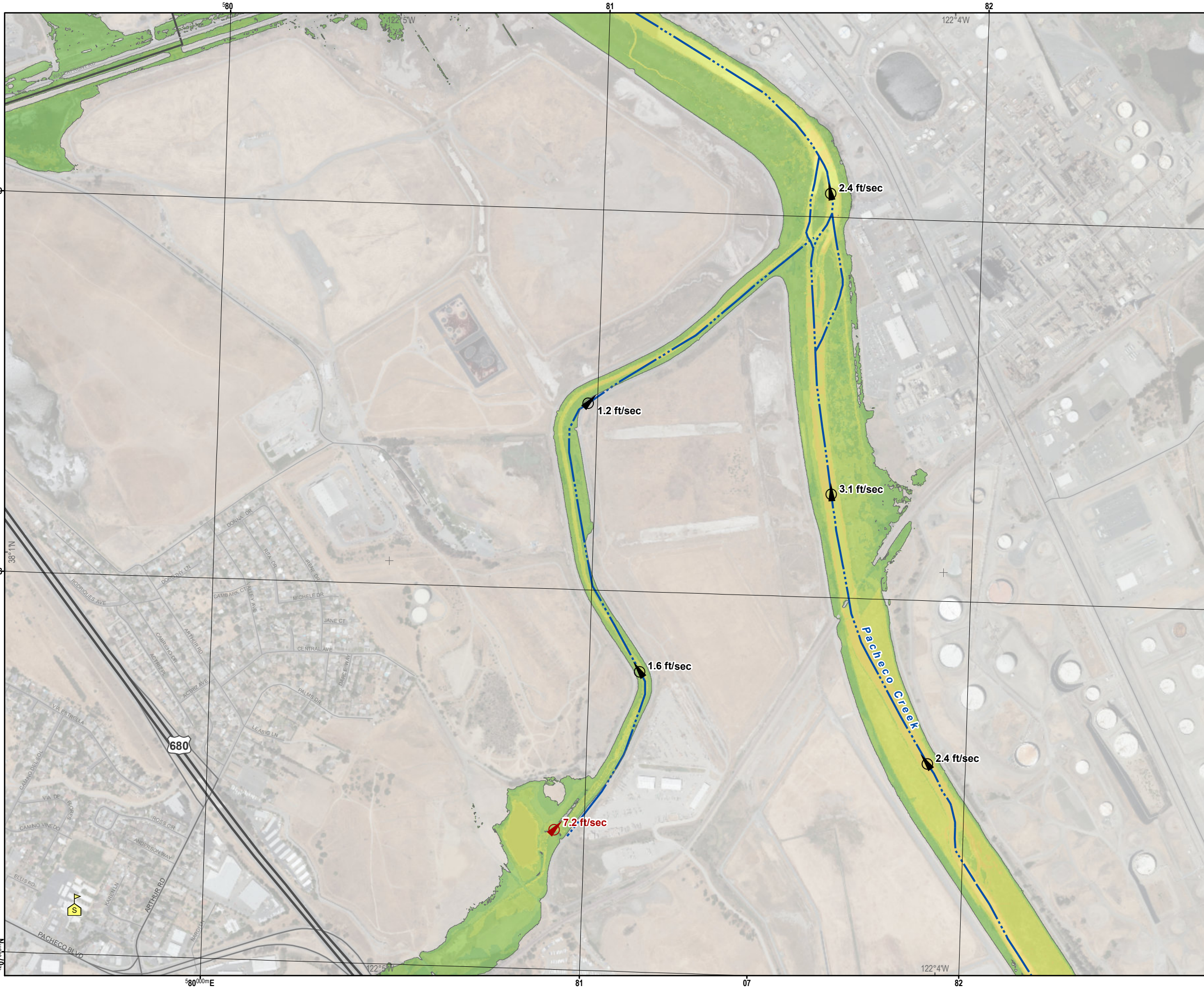
MAP PROJECTION:
 California Teale Albers (feet), NAD83

SCALE IN FEET (1 INCH=800 FEET)

0 400 800 1,200

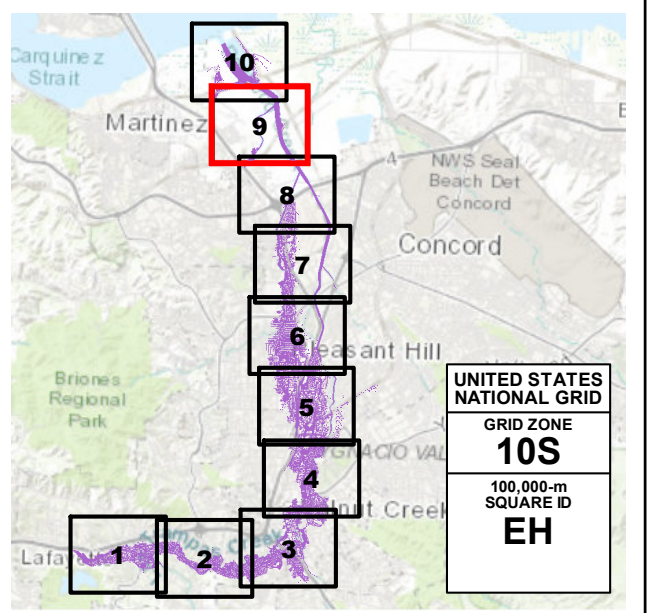
REFERENCE:
 GRID OVERLAY, United States National Grid (meters), NAD83
 GRATICULE, Geographic Coordinate System, NAD83 (DDM)





EBMUD INUNDATION MAP FOR HYPOTHETICAL FAILURE OF
LAFAYETTE DAM
 CONTRA COSTA COUNTY, CA

SCENARIO: SUNNY DAY	PREP. DATE: NOV 2019	SHEET NO.: 9 OF 10	DWR DAM NO.: 31.002	NATIONAL DAM ID NO.: CA00163
-------------------------------	--------------------------------	------------------------------	-------------------------------	--



FLOOD WAVE MAXIMUM DEPTH (feet)

1 - 3
3 - 5
5 - 7
7 - 10
10 - 15
15 - 20
20 - 30
> 30

LEGEND:

- SCHOOLS (Yellow 'S' icon)
- STREAM CENTERLINE (Blue dashed line)
- MAXIMUM VELOCITY AND DIRECTION AT SELECTED LOCATION (Black circle with arrow)
- MAXIMUM VELOCITY AND DIRECTION ON SHEET (Red circle with arrow)
- CITY LIMITS (Black outline)

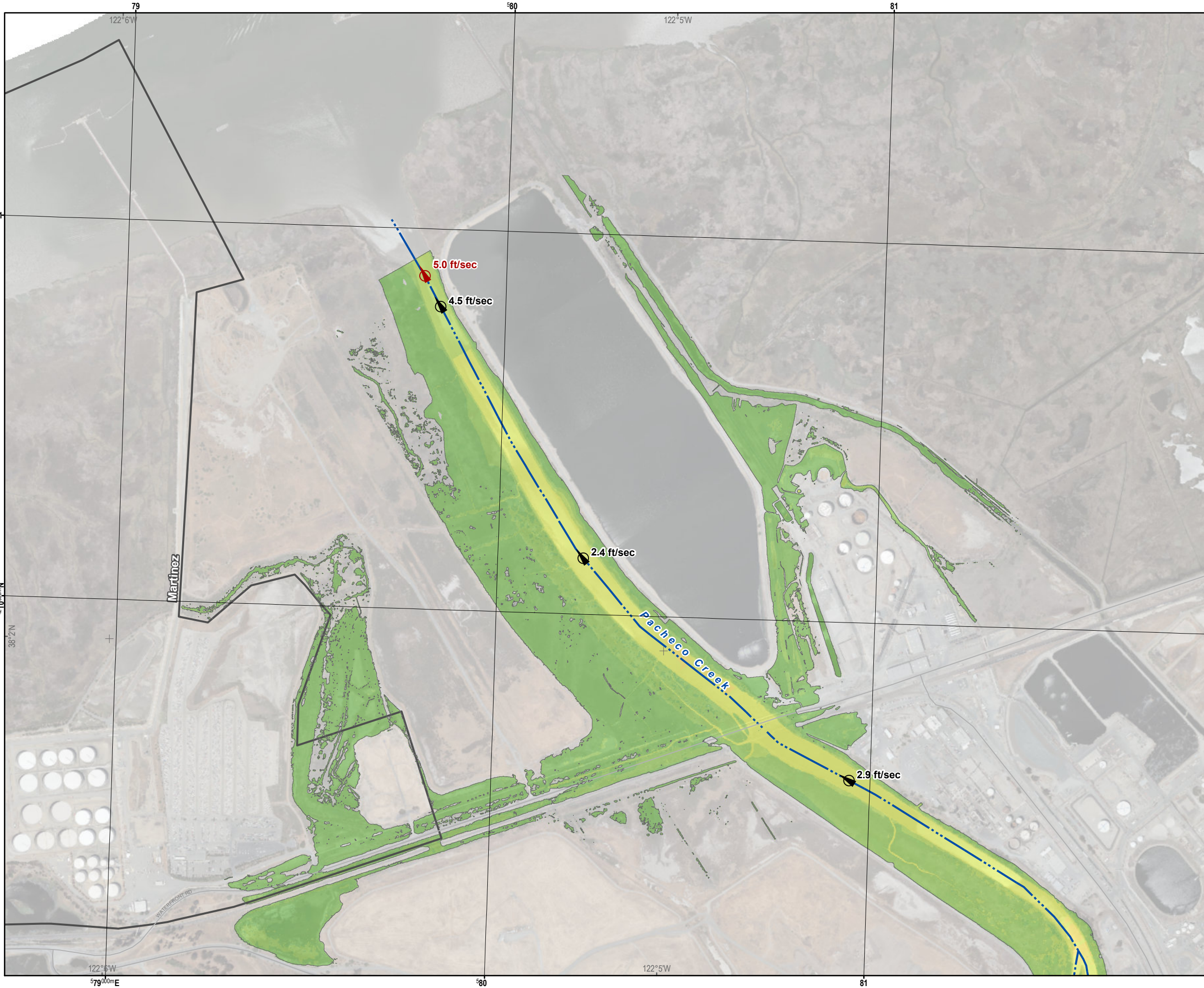
NOTES:

- The information shown on the inundation map is approximate and should only be used as a guideline for emergency response and preparation purposes. It does not represent the integrity or safety of Lafayette Dam.
- The dam breach analysis was performed using the program HEC-RAS, Version 5.0.5. Elevations in the study reference NAVD88.
- Maximum velocity depends on factors such as ground slope and roughness, and therefore varies.
- Security-sensitive infrastructure may not be shown on this map.

MAP PROJECTION:
California Teale Albers (feet), NAD83

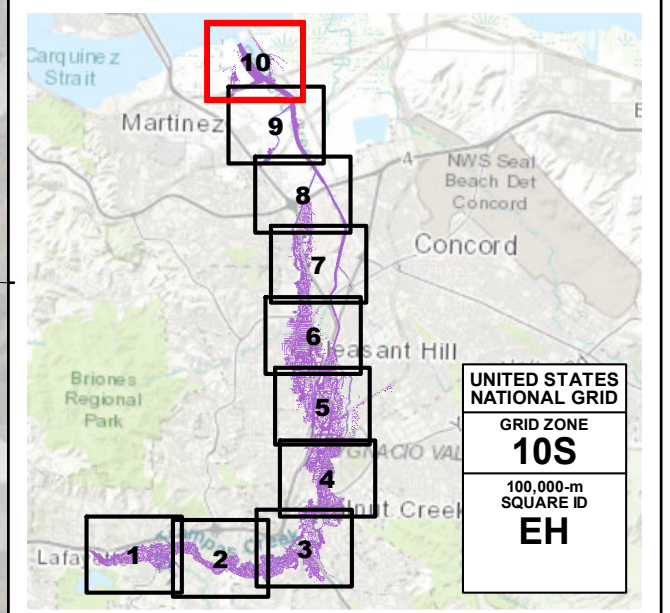
SCALE IN FEET (1 INCH=800 FEET)

REFERENCE:
GRID OVERLAY, United States National Grid (meters), NAD83
GRATICULE, Geographic Coordinate System, NAD83 (DDM)



INUNDATION MAP FOR HYPOTHETICAL FAILURE OF LAFAYETTE DAM
CONTRA COSTA COUNTY, CA

SCENARIO: SUNNY DAY	PREP. DATE: NOV 2019	SHEET NO.: 10 OF 10	DWR DAM NO.: 31.002	NATIONAL DAM ID NO.: CA00163
-------------------------------	--------------------------------	-------------------------------	-------------------------------	--



UNITED STATES NATIONAL GRID
GRID ZONE
10S
100,000-m SQUARE ID
EH

FLOOD WAVE

MAXIMUM DEPTH (feet)

1 - 3
3 - 5
5 - 7
7 - 10
10 - 15
15 - 20
20 - 30
> 30

MAXIMUM VELOCITY AND DIRECTION AT SELECTED LOCATION

MAXIMUM VELOCITY AND DIRECTION ON SHEET

CITY LIMITS

STREAM CENTERLINE

NOTES:

- The information shown on the inundation map is approximate and should only be used as a guideline for emergency response and preparation purposes. It does not represent the integrity or safety of Lafayette Dam.
- The dam breach analysis was performed using the program HEC-RAS, Version 5.0.5. Elevations in the study reference NAVD88.
- Maximum velocity depends on factors such as ground slope and roughness, and therefore varies.
- Security-sensitive infrastructure may not be shown on this map.

MAP PROJECTION:
California Teale Albers (feet), NAD83

SCALE IN FEET (1 INCH=800 FEET)

0 400 800 1,200

REFERENCE:
GRID OVERLAY, United States National Grid (meters), NAD83
GRATICULE, Geographic Coordinate System, NAD83 (DDM)