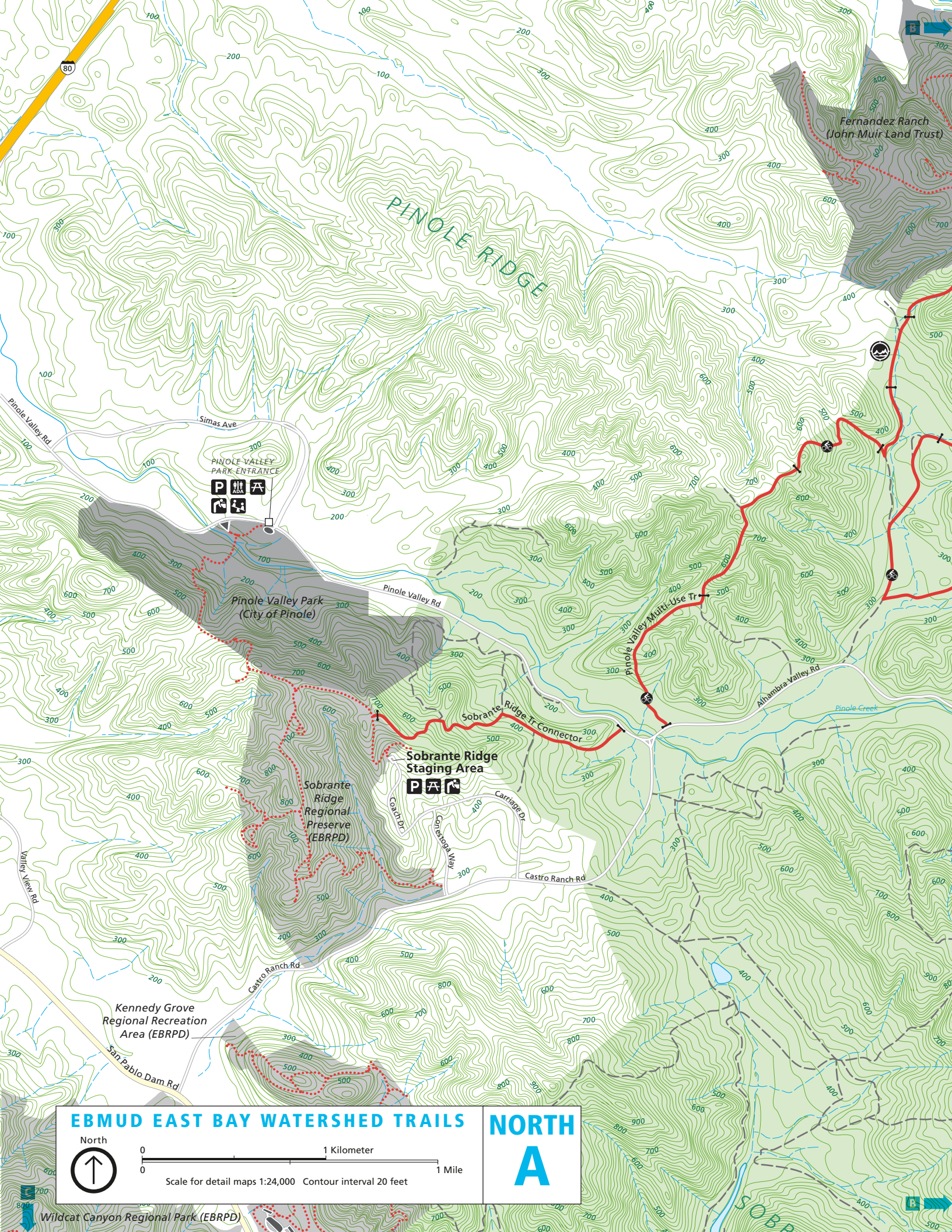


EBMUD EAST BAY WATERSHED TRAIL INFO: NORTHERN TRAILS

TRAIL	START	END	DISTANCE (mi)	LEASHED DOGS	HORSES	BICYCLES	SUN EXPOSURE	DIFFICULTY
1 Pinole Valley Multi-Use	Pereira Trailhead	Alhambra Valley and Castro Ranch intersection	6.66 one way	No	Yes	Yes	Mostly sun	Difficult
2 Pinole Ridge	Pereira Trailhead	Pinole Valley Multi-Use Trail at Fernandez Ranch Windmill Trail	2.96 one way	No	Yes	No	Mostly sun	Difficult
3 Old San Pablo (partially paved)	San Pablo Boat Launch	Kennedy Grove Connector Trail	3.4 one way	Limited to park hours	Yes	Yes	Equal parts shade and sun	Easy
3 Old San Pablo (unpaved)	Watershed Headquarters	San Pablo Boat Launch	1.4 one way	No	Yes	No	Mostly shade	Easy
4 Eagle's Nest	San Pablo Recreation Area	Nimitz Way	0.83 one way	No	Yes	Yes	Mostly shade	Difficult
5 Inspiration	Inspiration Point Staging Area	Old San Pablo Trail	1.98 one way	No	Yes	No	Mostly sun	Difficult
6 Orinda Connector	Bear Creek Rd	Watershed Headquarters	0.6 one way	No	Yes	No	Full shade	Moderate
7 Hampton	Hampton Rd	Oursan Trail	0.67 one way	Yes	Yes	No	Mostly shade	Moderate
8 Oursan	Briones Overlook Staging Area	Bear Creek Staging Area	9.54 one way	Yes	Yes	No	Mostly sun	Moderate
9 Bear Creek	Bear Creek Staging Area	Briones Overlook Staging Area	3.81 one way	No	Yes	No	Full shade	Moderate
10 Skyline	Lomas Cantadas Trailhead	Sibley Park boundary	1.73 one way	No	Yes	No	Equal parts shade and sun	Moderate
11 De Laveaga	De Laveaga Trailhead	Skyline Gardens Trailhead	2.85 one way	No	Yes	No	Mostly sun	Difficult

TRAIL DESCRIPTIONS

- Pinole Valley Multi-Use:** From the Pereira Trailhead, cross the creek and turn left (west) at the trail junction. The trail passes through open grassland, skirts rolling, grassy hills, and climbs to the top of the Pinole ridgeline. At the crest, the trail connects with the Fernandez Ranch Windmill Trail. From here, continue west to the Franklin Canyon Trail junction, or follow along the Bay Area Ridge Trail, down steep terrain to Alhambra Valley Road below. Bicycles are allowed along the multi-use trail, which consists of fire roads that may be muddy well into spring.
- Pinole Ridge:** From the Pereira Trailhead, cross the creek and turn right at the junction. The narrow gauge trail continues up a steep hill through grasslands and coyote brush scrub to Pinole Peak. The trail has nice views of the Pinole Valley and the Bay. It continues along the Pinole Valley Multi-Use Trail along the Bay Area Ridge Trail alignment.
- Old San Pablo:** The trail takes a leisurely route along the west side of the San Pablo Reservoir. The trail section between Orinda Watershed Headquarters and the San Pablo Boat Launch is narrow gauge and mostly shaded by a Monterey pine grove. No bicycles are allowed on the narrow portion of the trail. Between the San Pablo Boat Launch and the San Pablo Dam, the trail is wide gauge and paved or gravel fire road. This was once the main road through the San Pablo Valley before construction of the current San Pablo Dam Road. Biking is allowed on the paved and gravel portions of the old road.
- Eagle's Nest:** The trail begins at the Old San Pablo Trail, on the north side of the San Pablo Recreation Area. The trail crosses San Pablo Dam Road at a crosswalk and heads uphill into an aromatic eucalyptus forest. Hike steadily uphill to Nimitz Way, then head north to Wildcat Canyon or south into Tilden Regional Park. Bicycles are allowed on the Eagle's Nest Trail.
- Inspiration:** The trail begins at Inspiration Point in Tilden Regional Park and drops down the broad shoulders of San Pablo Ridge through grassy pastures to the San Pablo Reservoir below. Use the pedestrian crosswalk at San Pablo Dam Road to connect with Old San Pablo Trail.
- Orinda Connector:** This trail is a short but important link between the City of Orinda and EBMUD's trail system. From Orinda Connector Trailhead, the trail winds down a steep slope to San Pablo Creek. At the junction, turn right (northeast) and cross San Pablo Creek to continue onto Bear Creek Trail or continue (northwest) on the Orinda Connector Trail past the EBMUD Watershed Headquarters, where the trail becomes Old San Pablo Trail. This leads to the San Pablo Reservoir Boat Launch and beyond.
- Hampton:** From the Hampton Trailhead, hike south along a shady hillside to connect with Oursan Trail. Dogs are allowed.
- Oursan:** This is a long, dog-friendly trail that follows unpaved fire roads. Head south from the Briones Overlook Staging Area and turn right (northwest) across the Briones Reservoir Dam. The trail follows the crest of Sobrante Ridge to the north side of the reservoir. After the Hampton Trail intersection, the trail continues along the reservoir for another 5.5 miles to the Bear Creek Staging Area. If you are traveling without a dog, you can make a long loop (roughly 13 miles) by continuing onto Bear Creek Trail (no dogs allowed), which circles back to the Briones Overlook Staging Area.
- Bear Creek:** This trail traverses the southeast slopes of the Briones Reservoir. It is moderately steep in a few sections, mostly forested, and botanically fascinating. At the Bear Creek Staging Area, head through the south gate and cross the creek to get on the trail. Hike past the Briones Overlook Staging Area to continue downhill along the Briones Dam spillway to the Orinda Connector Trail.
- Skyline:** The trail begins near the Tilden Steam Trains at the Lomas Cantadas Trailhead and continues off EBMUD land into Sibley Volcanic Regional Preserve. The trail has beautiful ridgeline views and a wide assortment of native flora in the spring. The Skyline Trail is also accessible from the Skyline Gardens Trailhead on Grizzly Peak Blvd.
- De Laveaga:** This trail provides access to the East Bay Skyline National Recreation Trail from the City of Orinda. The trail is a challenging climb with several steep sections that lead to spectacular ridgetop views. The trail ends at Skyline Trail, just below Grizzly Peak Boulevard near Tilden Steam Trains.



Fernandez Ranch
(John Muir Land Trust)

PINOLE RIDGE

Simas Ave

PINOLE VALLEY
PARK ENTRANCE



Pinole Valley Park
(City of Pinole)

Sobrante Ridge
Staging Area



Sobrante
Ridge
Regional
Preserve
(EBRPD)

Kennedy Grove
Regional Recreation
Area (EBRPD)

EBMUD EAST BAY WATERSHED TRAILS

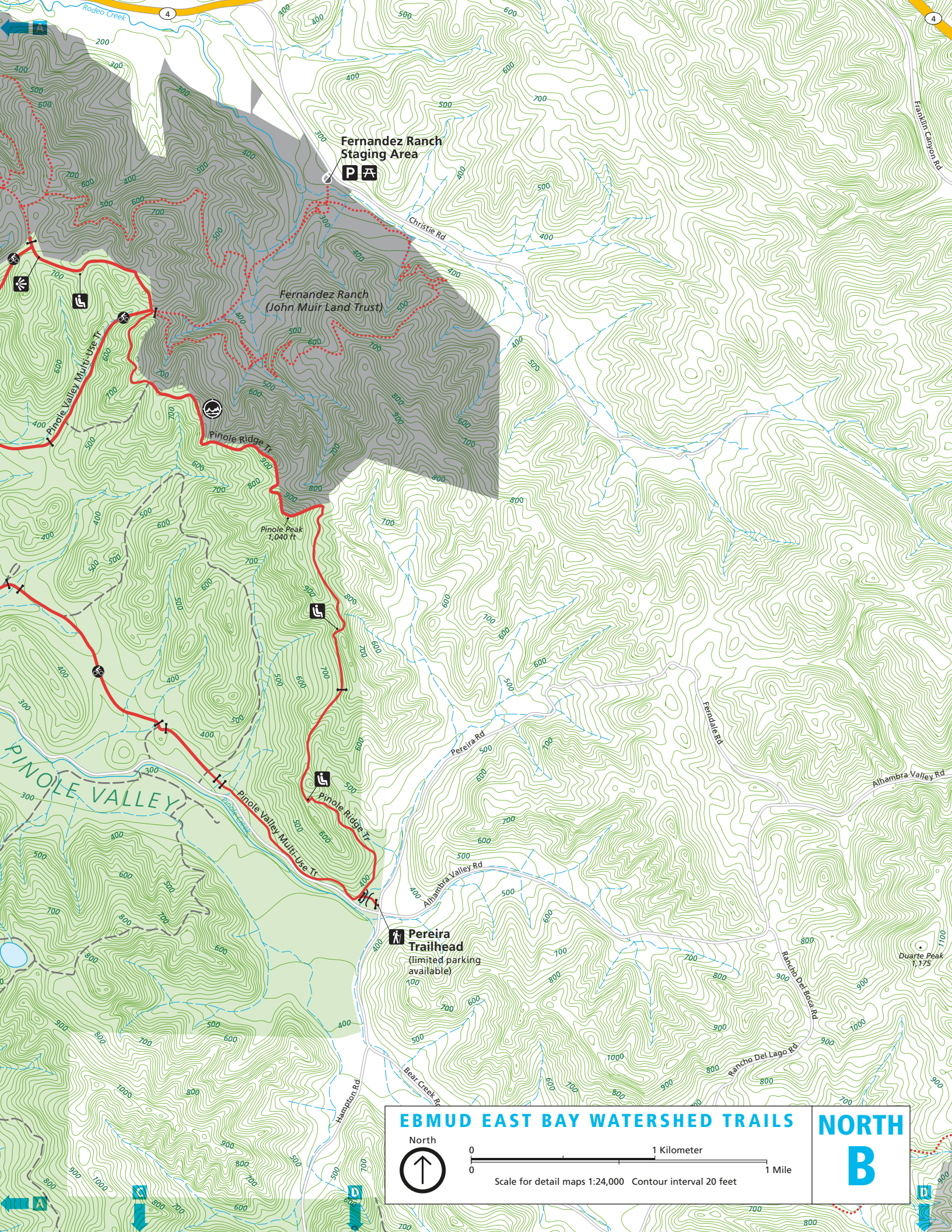
NORTH



0 1 Kilometer 1 Mile
Scale for detail maps 1:24,000 Contour interval 20 feet

A

Wildcat Canyon Regional Park (EBRPD)



Fernandez Ranch Staging Area

Fernandez Ranch (John Muir Land Trust)

Pinole Peak 1,040 ft

Pereira Trailhead (limited parking available)

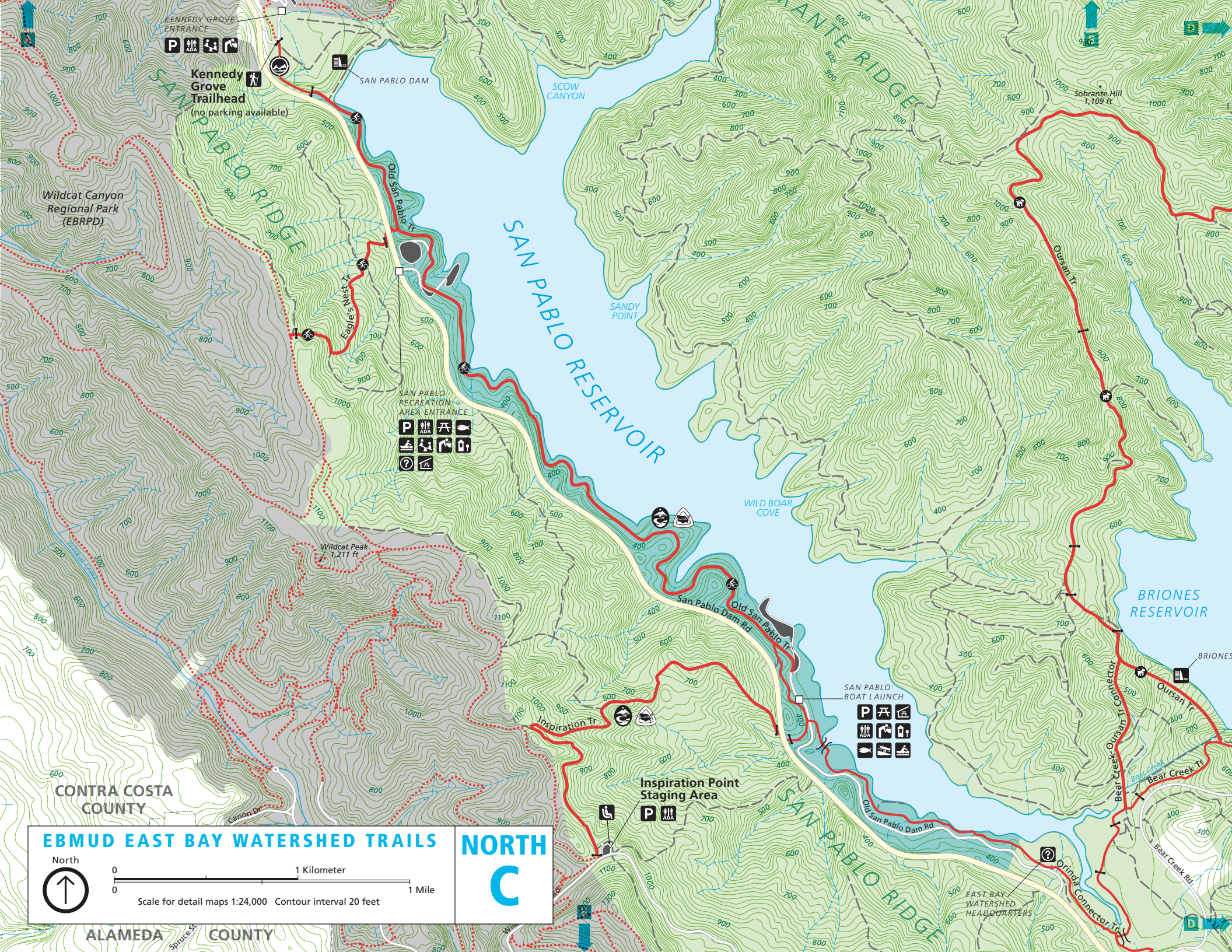
EBMUD EAST BAY WATERSHED TRAILS

NORTH B



0 1 Kilometer 1 Mile

Scale for detail maps 1:24,000 Contour interval 20 feet



KENNEDY GROVE ENTRANCE

Kennedy Grove Trailhead
(no parking available)

Wildcat Canyon Regional Park (EBRPD)

SAN PABLO RESERVOIR

SAN PABLO RECREATION AREA ENTRANCE

Wildcat Peak 1,211 ft

CONTRA COSTA COUNTY

EBMUD EAST BAY WATERSHED TRAILS NORTH



0 1 Kilometer
0 1 Mile
Scale for detail maps 1:24,000 Contour interval 20 feet

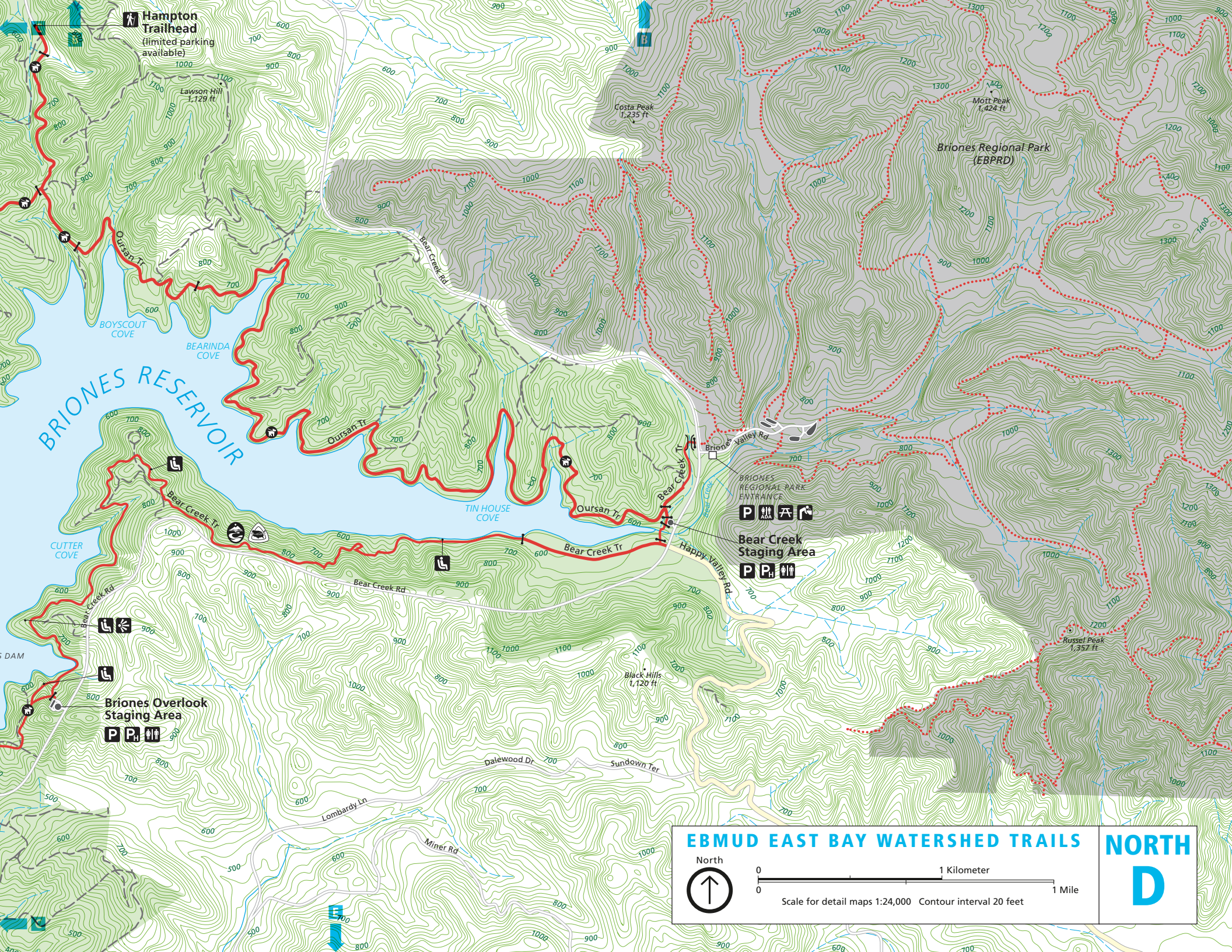
ALAMEDA COUNTY

SAN PABLO BOAT LAUNCH

Inspiration Point Staging Area

BRIONES RESERVOIR

EAST BAY WATERSHED HEADQUARTERS



Hampton Trailhead
(limited parking available)

Lawson Hill
1,129 ft

Costa Peak
1,235 ft

Mott Peak
1,424 ft

Briones Regional Park
(EBPRD)

BRIONES RESERVOIR

TIN HOUSE COVE

Bear Creek Staging Area

Briones Overlook Staging Area

EBMUD EAST BAY WATERSHED TRAILS NORTH

North
↑

0 1 Kilometer 1 Mile

Scale for detail maps 1:24,000 Contour interval 20 feet

D

